

45

# **ASHLAND**

**Quality**

**INDUSTRIES, INC.**

**Equipment**

## **PARTS MANUAL**

**Manufacturer:**

**ASHLAND INDUSTRIES, INC.**



**MODEL** 45

## MODEL 45 SCRAPER ASSEMBLY INSTRUCTIONS

1. A suitable hoist or lift should be available for assembly.
2. Pack wheel bearing with grease and install hubs to rear spindles and front axle assembly. Be sure to follow the bearing numbers as shown in the parts listing as the front hubs require different bearings than the rear.
3. Raise the rear of frame and install wheels to hubs. Also install wheels to front axle assembly.
4. Raise front of frame and remove the two  $5/8"$  x  $4"$  bolts which hold the cast socket halves inside the gooseneck. Remove the cast socket halves.
5. Roll the pole and axle assembly directly under the gooseneck and place the cast socket halves around the ball socket on axle. Lower the frame into place so that socket halves seat into gooseneck. (If necessary clamp halves together with C-clamp while inserting into gooseneck.) Replace  $5/8"$  x  $4"$  bolts and tighten securely. Install long shank grease fitting into hole in back side of gooseneck.
6. Raise actuating frame over bucket and lower into place so that the holes in the arms of the actuating frame aligns with the rear hole on each side of the bucket. Insert  $1-1/4"$  x  $2-9/16"$  pin (with tab type head) from the inside of the bucket. Secure with  $5/8"$  x  $1-1/4"$  N.F. bolt through bucket side with the locking nut to the outside.
7. Connect actuating arm bars to the front holes in the bucket. In doing so be sure that the cast roller on the opposite end of the actuating arm is in the up position and facing inward. Insert  $1-1/4"$  x  $2-9/16"$  pin (w/tab type head) from the inside on the bucket. Secure with  $5/8"$  x  $1-1/4"$  N.F. bolt through the bucket side with the locking nut to the outside.
8. Connect a short chain from the cutting edge to the cross pipe of the actuating frame then raise this bucket and actuating assembly over the main frame and lower into place so that the front of the actuating frame can be connected to the  $1-1/2"$  ID bearing on each side of the main frame. Secure with  $1-1/2"$  x  $5-5/8"$  pins on each side. Lock these pins in place by turning the pin until the hole in the head aligns with the threaded hole in the actuating frame, then secure with  $1/2"$  x  $1"$  NC capscrew and lockwasher.

MODEL 45 ASSEMBLY INSTRUCTIONS CONTINUED:

9. Lift front end of actuating arms and connect to the brackets on the front frame cross member using the 1-1/4" x 4-1/8" pins. Secure with 1/4" x 2" cotter pin.
10. Install hydraulic cylinders to main frame and actuating frame with rod end to actuating frame. Be sure the grease hole in the rod end is facing up. Use 1-1/8" x 3-1/4" pin at the base of the cylinder. Secure with 3/16" x 1-1/2" cotter pins. Use 1-1/8" x 6" pin at the rod end of the cylinder. Secure with 1" x 1/2" NC capscrew and lockwasher.
11. Install 3/8 90° swivel adapters into front and rear port on each cylinder. Tighten so that the hose connection faces the rear.
12. Connect a 3/8" x 18" hose from the rear port of each cylinder to one of the pipe lines on the rear cross frame. Be sure both hoses from the rear ports are connected to the same pipe line.
13. Connect a 3/8" x 38" hose from the front port of each cylinder to the remaining pipe line of the rear cross frame.
14. Raise the apron assembly over the scraper and lower into position so that the holes in the arms of the apron align with the holes in the bucket sides. Insert the 1-1/4" to 1" shoulder pin through the apron arms and into the bucket. Install lock nut inside the bucket and tighten securely.
15. Install all the grease fittings and grease liberally.
16. If available, place assembled scraper on level floor or pavement and measure the distance from the cutting edge to floor, on both left and right sides, and then adjust axle spindle to obtain equal distance on both sides.

## OPERATORS AND MAINTENANCE INSTRUCTIONS

The scraper is a durable piece of equipment and with proper care will yield many years of trouble free operation. The scraper requires a power source with one 4 way (double acting) hydraulic control valve.

After scraper has been assembled it should be greased at all points where grease fittings are provided. Connect hydraulic hoses to tractor and operate the scraper to maximum raise and drop several times to force out any air from the hydraulic lines and cylinders. Check the oil level in the tractor hydraulic system and add to maintain the proper level.

When the scraper is placed into operation the operator will have to "feel out" the amount of depth of cut to obtain maximum loading efficiency. This is usually accomplished by taking a lesser and more uniform cut. However, some soil conditions such as loose sand may require a "pumping action" obtained by taking successive deep cuts and lifting out of the cut as the tractor begins to lose power or traction.

1. After 10 hours work, all bolts should be checked and tightened if necessary.
2. Every 10 hours all grease fittings should be lubricated.
3. After 50 hours work, all bolts should be rechecked and tightened if necessary. Check wheel bearings and adjust if necessary.
4. After 300 hours work, clean and repack wheel bearings. Inspect and replace, if necessary, cutting edges, worn pins, etc.

HOW TO ORDER PARTS

IMPORTANT!

Be sure to state MODEL and SERIAL NUMBER of machine, PART NUMBER, DESCRIPTION, and QUANTITY needed.

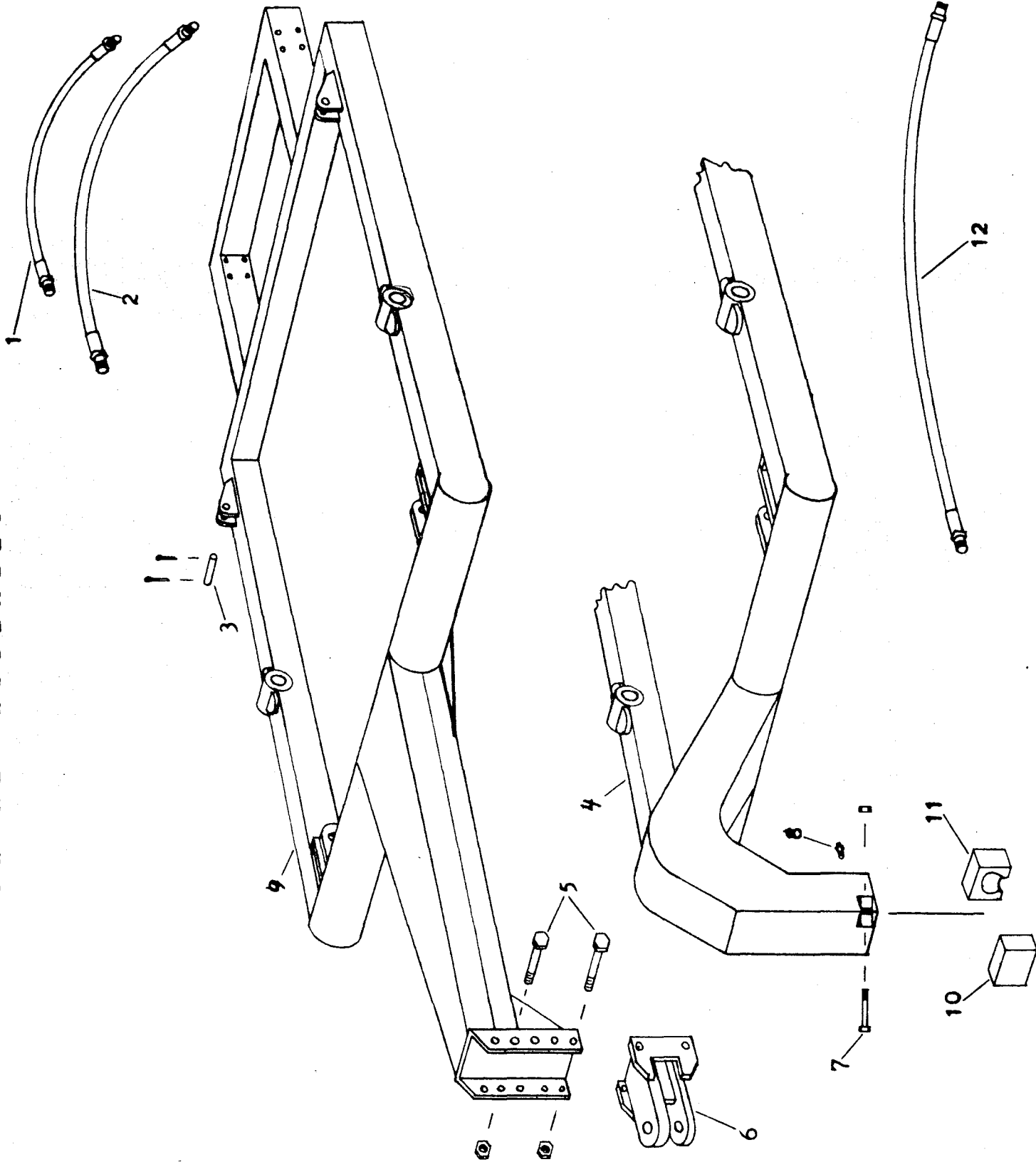
Unless this is done, we cannot provide prompt service or assure shipment of the correct parts.

I N D E X

PAGE NO.

1. Index
2. Illustration - Frame Assembly
3. Parts list - Frame **Assembly**
4. Illustration - Pole, axle and wheel assembly
5. Parts list - Pole, axle and wheel assembly
6. Illustration - Actuating assembly
7. **Parts list** - Actuating assembly
8. Illustration - Bucket and apron assembly
9. Parts list - Bucket and apron assembly
10. Illustration & Parts List - Wheel, hub and spindle
11. Illustration & Parts List - Hydraulic cylinder

FRAME ASSEMBLY

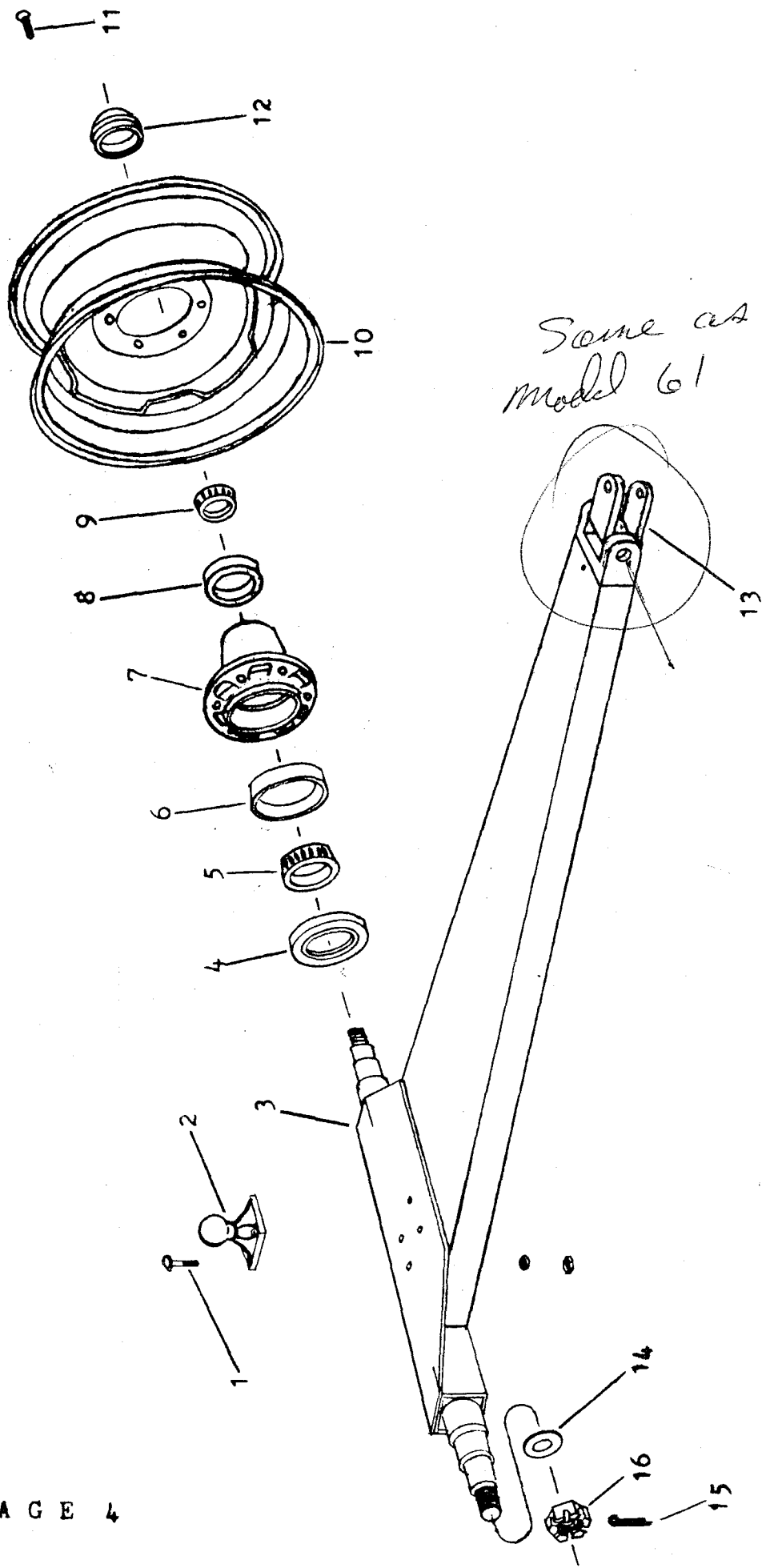


P A R T S   L I S T  
F R A M E   A S S E M B L I E S

MODEL 45 SCRAPER

<u>KEY NO.</u>	<u>PART NO.</u>	<u>DESCRIPTION</u>
1.	A450H01	Hydraulic hose, 3/8" x 18" single braid
2.	A450H02	Hydraulic hose, 3/8" x 38" single braid
	A22H03	Swivel adapter, 90°
3.	A45003	Pin, 1-1/8" x 3-1/4", cotter both ends Cotter pin, 3/16" x 1-1/2"
4.	A4551	Frame, four wheel, Model D
5.		Bolt, 3/4" x 6" NC w/nut & LW
6.	A4523	Hitch
7.		Bolt, 5/8" x 4" NC w/nut & LW
8.	A2206	Grease fitting, 1-1/8" NPT strt. long
9.	A4552	Frame, two wheel, Model S
10.	A40004	Cast socket half
11.	A40005	Cast socket half, rear w/grease hole
12.		Connecting hydraulic hose, 1/2" x 84" or 1/2" x 60"

ILLUSTRATION POLE, AXLE, HUB, & WHEEL





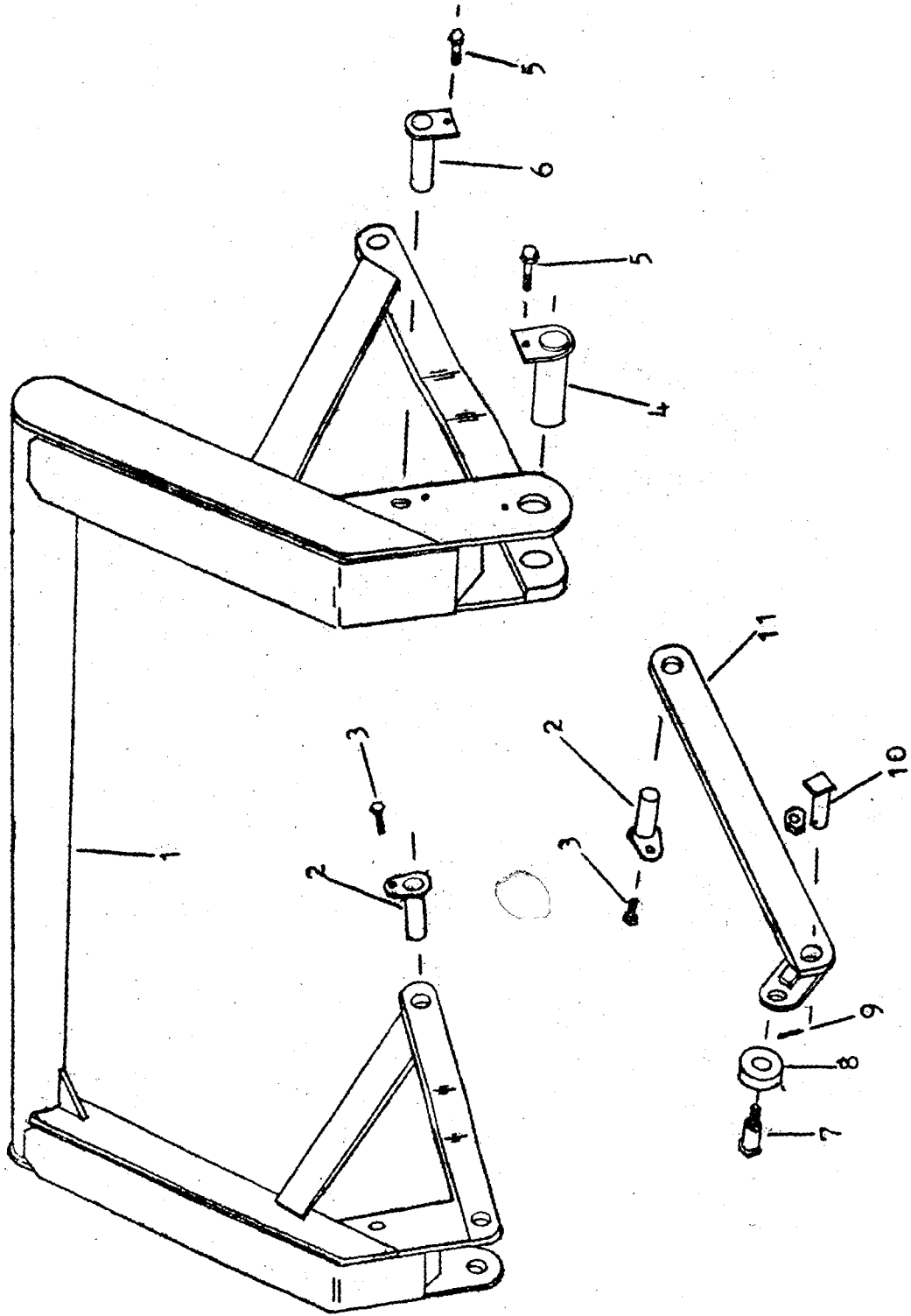
P A R T S   L I S T

P O L E,   A X L E   &   W H E E L   A S S E M B L Y

MODEL 45 SCRAPER

<u>KEY NO.</u>	<u>PART NO.</u>	<u>DESCRIPTION</u>
1.		Bolt, 3/4" x 2-1/2" NC w/nut & LW
2.	A40006	Ball swivel
3.	A4502	Pole and axle assembly
4.	A2229	Grease seal
5.	A2230	Bearing cone, inner
6.	A2231	Bearing cup, inner
7.	A2232	Hub, less bearing cups
8.	A2233	Bearing cup, outer
9.	A2234	Bearing cone, outer
10.	A3319	Wheel, 15" x 6"
11.	A2236	Wheel bolt
12.	A2235	Hub cap
13.	A4553	Swivel hitch
14.	A2239	Washer, special 7/8" flat
15.		Cotter pin, 5/32" x 1-1/4"
16.		Nut, 7/8" NF castellated
	A2238	1 3/4" dia WELDED ON SPINDLE

ACTUATING FRAME ASSEMBLY

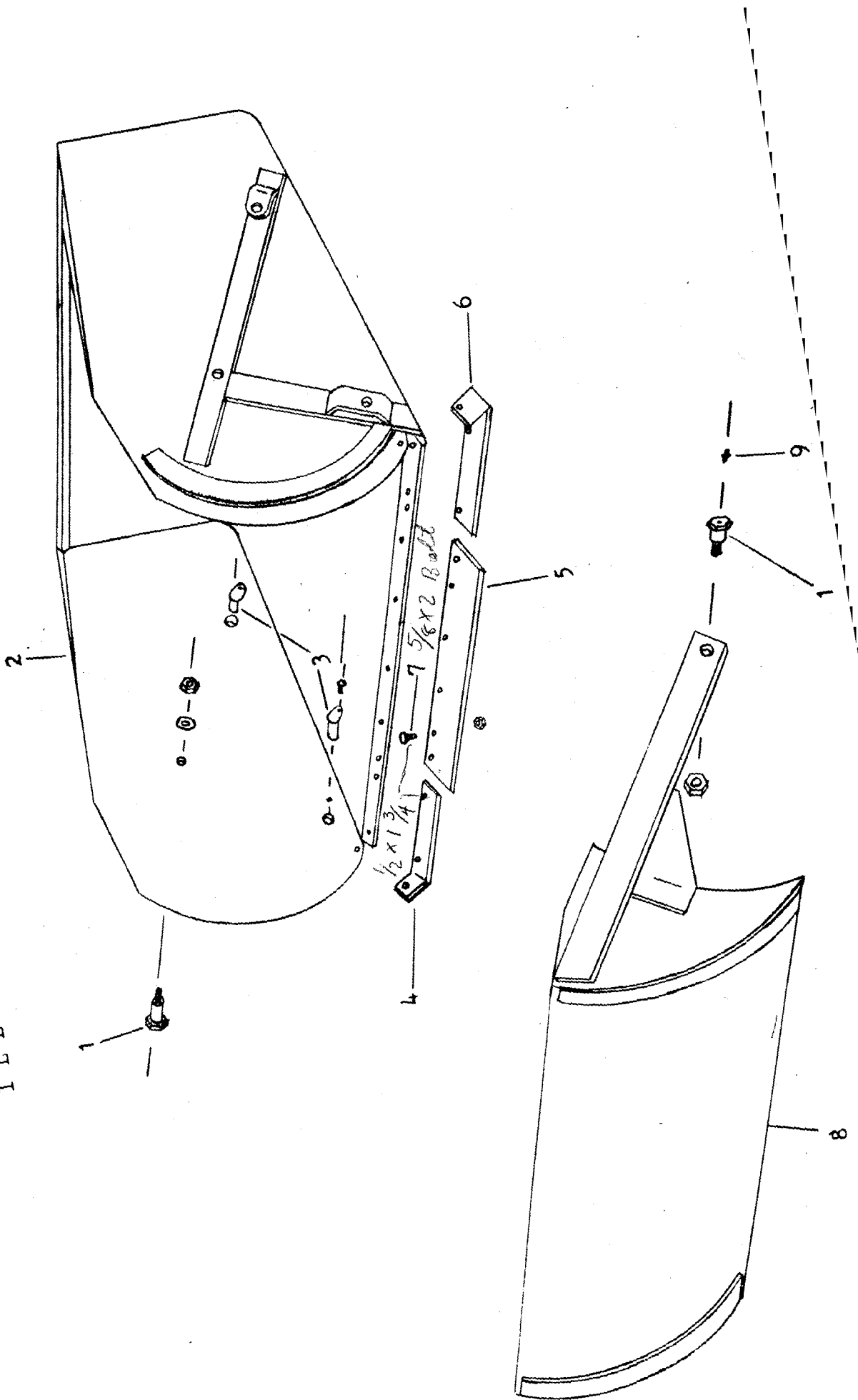


P A R T S   L I S T  
A C T U A T I N G   A S S E M B L Y

MODEL 45 SCRAPER

<u>KEY NO.</u>	<u>PART NO.</u>	<u>DESCRIPTION</u>
1.	A45005	Actuating frame
2.	A45006	Pin, 1-1/4" x 2-9/16" w/locking head
3.		Bolt, 5/8" x 1-1/4" NC w/lock nut
4.	A2502	Pin, 1-1/2" x 5-3/4"
5.		Capscrew, 1/2" x 1" NC w/LW
6.	A4524	Pin, 1-1/8" x 6"
7.	A30003	Shoulder pin, 2-1/2" shoulder, 1-1/4" to 1" Nut, 1" NF lock nut
8.	A30002	Roller
9.		Cotter pin, 1/4" x 2"
10.	A6007A	Pin, 1-1/4" x 4-1/8" w/sq. hd.
11.	A45007	Actuating arm, left
	A45008	Actuating arm, right

ILLUSTRATION BUCKET ASSEMBLY



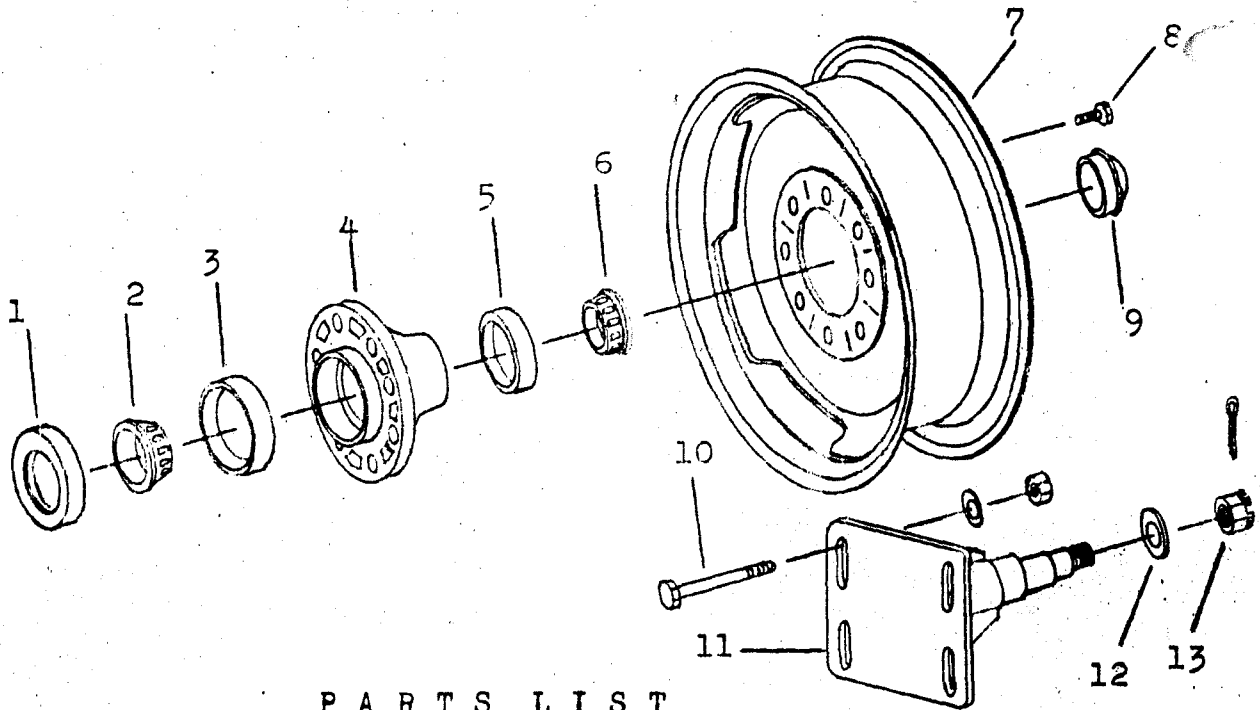
PARTS LIST

BUCKET & APRON ASSEMBLY

MODEL 45 SCRAPER

<u>KEY NO.</u>	<u>PART NO.</u>	<u>DESCRIPTION</u>
1.	A30020	Shoulder pin, 1-1/4" to 1" NF w/ctsk hole Nut, 1" lock type
2.	A45009	Bucket
3.	A45006	Pin, 1-1/4" x 2-9/16" w/locking head
4.	A2225	Right cutting edge, 6"
5.	A45010	Center cutting edge, 8" x 50"
6.	A2222	Left cutting edge, 6"
7.		Plow bolt, 1/2" x 1-3/4" w/nut Plow bolt, 5/8" x 2" w/nut
8.	A45011	Apron
9.		Grease fitting, 1/8" NPT regular

ILLUSTRATION  
WHEEL, HUB, AND SPINDLE



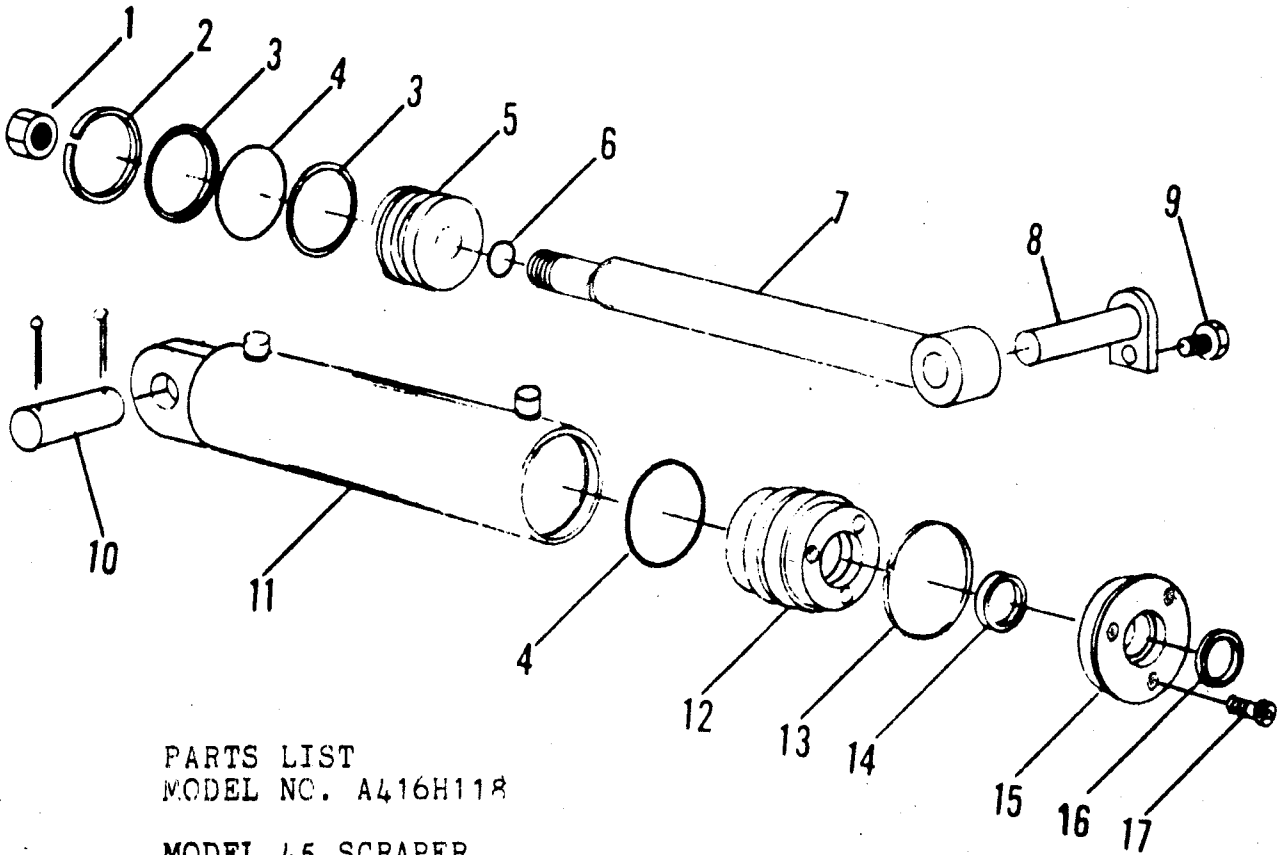
PARTS LIST

WHEEL, HUB, AND SPINDLE

MODEL 450 SCRAPER #45, 50, 500

<u>KEY NO.</u>	<u>PART NO.</u>	<u>DESCRIPTION</u>
1.	A4512	Grease seal
2.	A4513	Bearing cone, inner
3.	A4514	Bearing cup, inner
4.	A4515	Hub, less bearing cups
5.	A2233	Bearing cup, outer
6.	A4516	Bearing cone, outer
7.	A4521A	Wheel, 20" D.C.
8.	A4519	Wheel bolt
9.	A2235	Hub cap
10.		Bolt, 3/4" x 5-1/2" NC w/nut & LW
11.	A4520	Spindle 2" $\phi$ BEARING RACE
12.	A2239	Washer, special 7/8" flat
13.		Nut, 7/8" NF castellated Cotter pin

ILLUSTRATION  
RIGHT HYDRAULIC CYLINDER  
(4" bore x 16" stroke)



PARTS LIST  
MODEL NO. A416H118

MODEL 45 SCRAPER

KEY NO.	PART NO.	DESCRIPTION
1.	A300H03	Piston nut, 1" NF
2.	A300H04	Cast iron ring, 4" OD
3.	A300H05	Back up washer, 4" OD
4.	A300H06	O-ring seal, 4" OD x 3/16"
5.	A300H07	Piston, 4"
6.	A45H05	Piston gasket, 1"
7.	A45H03	Shaft, 1-1/2" dia.
8.	A4524	Pin, 1-1/8" x 6"
9.		Capscrew, 1/2" x 1" NC w/LW
10.	A45003	Pin, 1-1/8" x 3-1/4"
		Cotter pin, 3/16" x 1-1/2"
11.	A45H04	Barrel assembly
12.	A300H11	Head gland
13.	A300H12	Retainer ring
14.	A22H15	O-ring, 1-1/2" x 1/8"
	A22H15A	Back up washer
15.	A300H13	Head cap
16.	A22H18	Capscrew, 1/4" x 1" NC
17.	A22H17	Wiper seal, 1-1/2" ID
	A300H14B	Packing kit, containing:
	1 A300H04	2 A22H15
	2 A300H05	1 A22H15A
	2 A300H06	1 A22H17
	1 A45H05	