



PARTS MANUAL

ASHLAND INDUSTRIES, INC.
Manufacturers of Quality Earth Moving Equipment
P.O. Box 47 Ashland, Wisconsin 54806

1000

Warranty . . .

ASHLAND INDUSTRIES, INC., warrants each new unit sold to be free from defects in material and workmanship for a period of ninety (90) days of service. The obligation under this Warranty, statutory or otherwise, is limited to the replacement or repair at the Manufacturer's factory, or at a point designated by the Manufacturer of such part or parts as shall appear to the Manufacturer, upon inspection at such point, to have been defective in material or workmanship. This Warranty does not obligate the Manufacturer to bear the cost of labor or transportation charges in connection with the replacement or repair of defective parts, nor shall it apply to a unit upon which repairs or alternations have been made unless authorized by the Manufacturer.

The Manufacturer shall in no event be liable for consequential damages or contingent liabilities arising out of the failure of any unit or parts to operate properly.

No express, implied or statutory Warranty other than herein set forth is made or authorized to be made by the Manufacturer.

ASHLAND INDUSTRIES, INC.

P. O. BOX 47

ASHLAND, WISCONSIN 54806

MODEL 1000 SCRAPER

HOW TO ORDER PARTS:

IMPORTANT

Be sure to state MODEL and SERIAL NO. of machine,
PART NO., DESCRIPTION and QUANTITY needed.

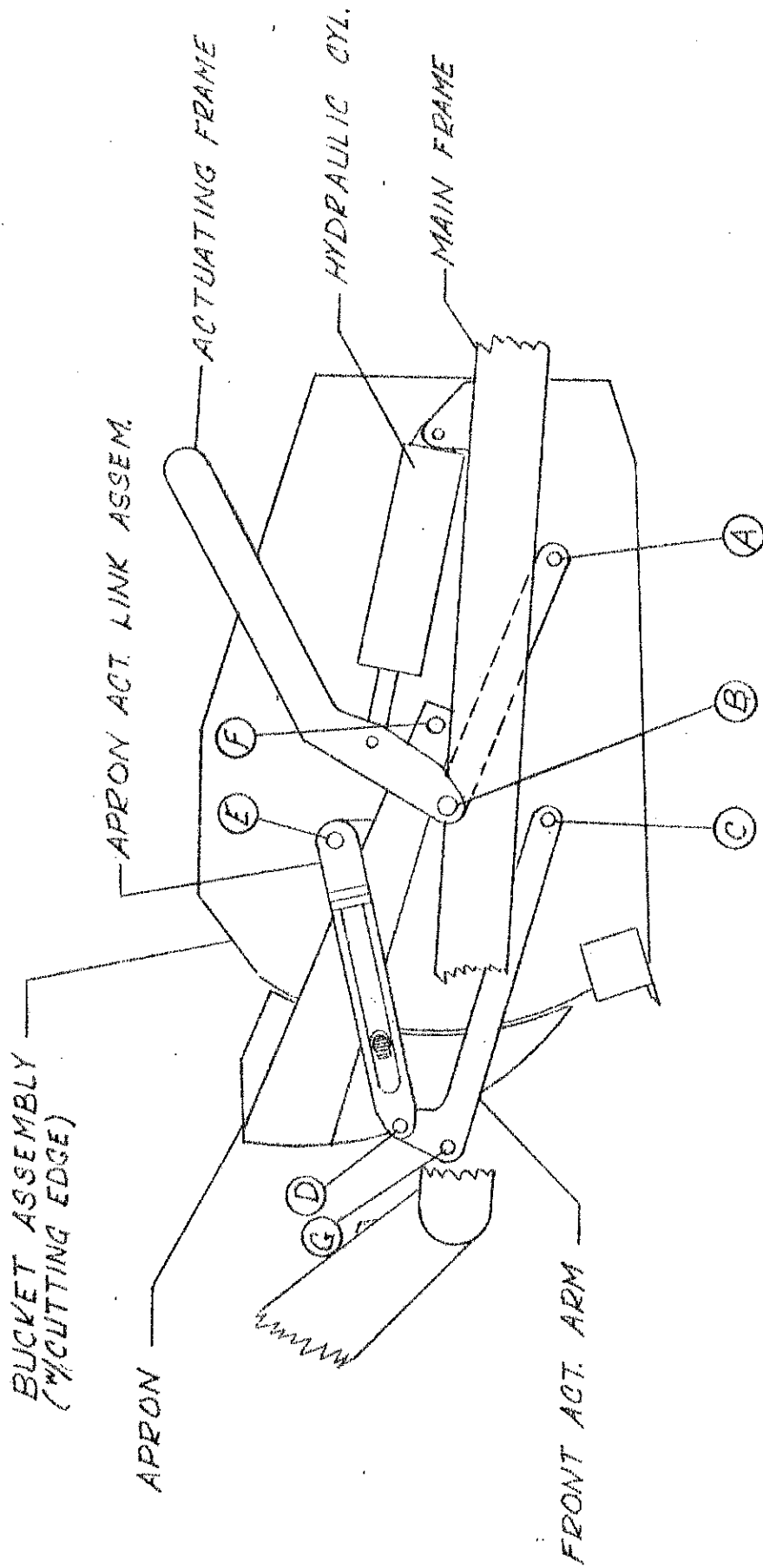
Unless this is done, we cannot provide prompt
service or assure shipment of correct parts.

I N D E X

PAGE NO.

1. Illustration - Assembly
- 2-4. Assembly Instructions
5. Illustration - Frame Assembly
6. Parts List - Frame Assembly
7. Illustration - Mounting Assembly (model 1000V only)
8. Parts List - Mounting Assembly (model 1000V only)
9. Illustration - Actuating Assembly
10. Parts List - Actuating Assembly
11. Illustration - Bucket & Apron Assembly
12. Parts List - Bucket & Apron Assembly
13. Illustration & Parts List - Pole & Axle Assembly
(Model 1000D Only)
14. Illustration & Parts List - Rear Frame Assembly
15. Illustration & Parts List - Rear Wheel, Spindle & Hub
16. Illustration & Parts List - Front Wheel & Hub (Model 1000D)
17. Illustration & Parts List - Hydraulic Cyl., 5" x 24"
18. Illustration & Parts List - Hydraulic Cyl., 4" x 8"
19. Illustration - Plumbing Assembly
20. Parts List - Hydraulic Pipe, Fittings, & Hoses

ILLUSTRATION - ASSEMBLY



ASSEMBLY INSTRUCTIONS FOR MODEL 1000 SCRAPER
(Refer to illustration on Page 1)

1. A suitable hoist or lift should be available for assembly.
2. Pack wheel bearings with grease and install hubs to rear spindles and to front axle assembly on model 1000D scrapers.
3. Install rear spindles to frame in lowest possible setting to obtain the maximum spreading depth between cutting edge and ground. If less depth of spread is desired, select a lower setting or reverse the spindle - bottom to top. Install wheels with mounted tires to hubs.

(Steps 4 and 5 refer to model 1000D scrapers only)

4. Raise the front of the frame and remove the two 5/8" x 4" bolts which hold the cast socket halves inside the gooseneck post. Remove the socket halves.
5. Roll the pole and axle assembly directly under the gooseneck and place the cast socket halves around the ball swivel on the axle. Lower the frame into place so that the socket halves seat into the gooseneck. (If necessary, clamp halves together with C-clamp while lowering gooseneck). Replace the two 5/8" x 4" bolts and tighten securely. Install long shank grease fitting into hole provided.
6. Raise actuating frame over bucket and lower into place so that the holes in the arms of the actuating frame align with the rear hole on each side of the bucket. (Point A) Insert 1-3/4" x 3-1/2" pins (with tab type head) from the inside of the bucket. Secure with 5/8" x 1-1/2" NF bolt through bucket side with the locking nut to the outside.
7. Connect a short chain from the cutting edge to the cross pipe of the actuating frame then raise the bucket and actuating frame assembly over the main frame and lower into place so the front of the actuating frame can be connected to the 2-1/4" bushing on each side of the frame, (point B) using the 2-1/4" dia. x 6-7/8" pins w/tab head. Secure with 5/8" x 1" NC cap-screws and lockwashers.
8. Install the actuating arm bars to the front holes in the bucket. (Point C) Insert 1-3/4" x 3-1/4" pins (with tab type head) from the inside of the bucket. Secure with 5/8" x 1-1/2" NF bolt through bucket side with lock nut on the outside.
9. Lift the end of actuating arms and connect to the brackets on the front frame crossmember using 1-3/4" x 4-1/8" pins. (Point G) Insert 5/16" x 2-1/2" cotter pins.
10. Attach the apron actuating links (linkage with built-in spring) to the bracket on each apron arm, (Point E), using two 1-5/8" x 1-1/4" shoulder pins (with grease hole in threaded end). Be sure the open end of the tube containing spring is facing downward.

ASSEMBLY INSTRUCTIONS FOR 1000 SCRAPER (Continued)

11. Raise the apron over the scraper and lower into place so the hole in the end of the arms aligns with the hole in each side of the bucket walls. (Point F) Attach with 1-5/8" to 1-1/4" shoulder pins (with grease hole in hexagon head)
12. Attach the opposite end of the apron actuating links, referred to in step 10, to the upright leg of the front actuating arms, (Point D), using 1-1/4" x 1-5/8" shoulder pins having zerk on head end. Secure with 1-1/4" NF lock nut.
13. Installing hydraulic cylinders:
 - A. Install the two 5" x 24" hyd. cylinders on each side of the scraper with the rod end to the actuating frame and the grease hole in the rod end bushing facing up. Use two 1-1/4" x 3-1/2" pins to attach base end on cylinders to frame, secure with 1/4" x 2" cotter pins. Attach rod end of cylinders to actuating frame with 1-1/4" x 6" tab head pins. Secure with 5/8" x 1-1/4" capscrews and lock washers.
 - B. Install 1/2" NPT 90° swivel adapters in both ports of the cylinder. Tighten so that the swivel will be facing toward the rear.
 - C. Connect a 1/2" x 18" hose from the forward pipe line on the frame crossmember to the base (rear) port of the cylinder.
 - D. Connect a 1/2" x 45" hose from the remaining pipe line on the frame crossmember to the forward port of the cylinder.
 - E. Install the 4" x 8" hydraulic cylinders on the rear of the scraper with the rod end connected to the rear frame section. Insert the 1-1/4" x 3-1/8" sq. head pin at the base of the cylinder. Secure with 1/4" x 1-3/4" cotter pin. Use 1-1/4" x 4-1/4" pin at the rod end of the cylinder and secure with a 1/4" x 1-3/4" cotter pin.
 - F. Install 3/8" x 1/2" x 90° swivel adapters in the two ports of the rear cylinder. Tighten so the 1/2" female threads face toward the front of the scraper.
 - G. Install the two 24" hoses from the top pipe ports (in front of rear frame crossmember) to the base ports of the rear cylinders. Install the two 36" hoses from the lower pipe ports to the rod end port of cylinders.
14. Install all grease zerks and lubricate liberally with high quality grease.
15. If possible, place assembled scraper on level floor and measure the distance from the cutting edge to floor, on both left and right sides, and then adjust rear spindles to obtain equal distance on both sides.

ASSEMBLY INSTRUCTIONS FOR 1000 SCRAPER (Continued)

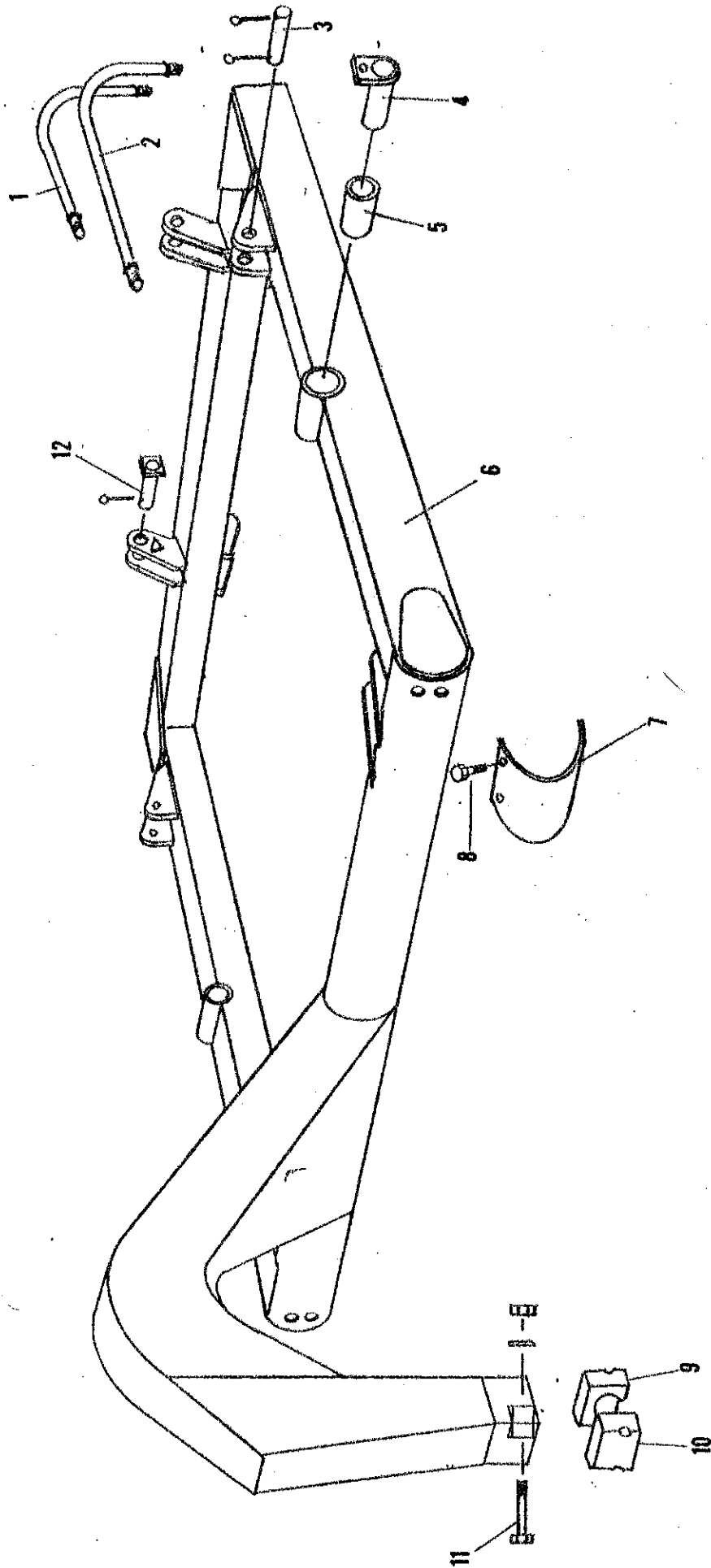
16. CAUTION: After four hours of operation, check all bolts and nuts for tightness, especially wheel bolts. Repeat same procedure after another 20 hours of operation. Failure to do so may void warranty.

17. 1000V model scrapers only:

The mounting bracket, part no. A10023 must be installed in the rear frame of the Versatile tractor in the following manner:

- A. Remove the deck plate cover from the top of the rear frame of the tractor, and position the mounting bracket over the frame crossmember so that the 9" angle flange lies on top and the 4" angle flange lies in front of the tractor crossmember with the brackets protruding forward. Weld securely in place, centered in tractor frame.
- B. It may be necessary to trim the two angle iron hose support brackets of the tractor to accommodate the pivot bracket, part no. A10021. Install pivot bracket to mounting bracket using two 3" x 5-1/4" pins with tab heads. Secure with 5/8" NC capscrews and lock washers.
- C. Install the swivel bracket, part no. A10022 to the pivot bracket using the 3" x 20" pin. Secure with 1/2" x 6" bolt, nut and lockwasher.
- D. Hook the hydraulic hoses from the tractor to the scraper and while backing the tractor to the scraper, obtain the proper height of the scraper so that the swivel bracket aligns with the bushings on the scraper gooseneck. Insert the 3" x 24" pin and secure with a 1/2" x 6" bolt, nut and lockwasher.

ILLUSTRATION - FRAME ASSEMBLY



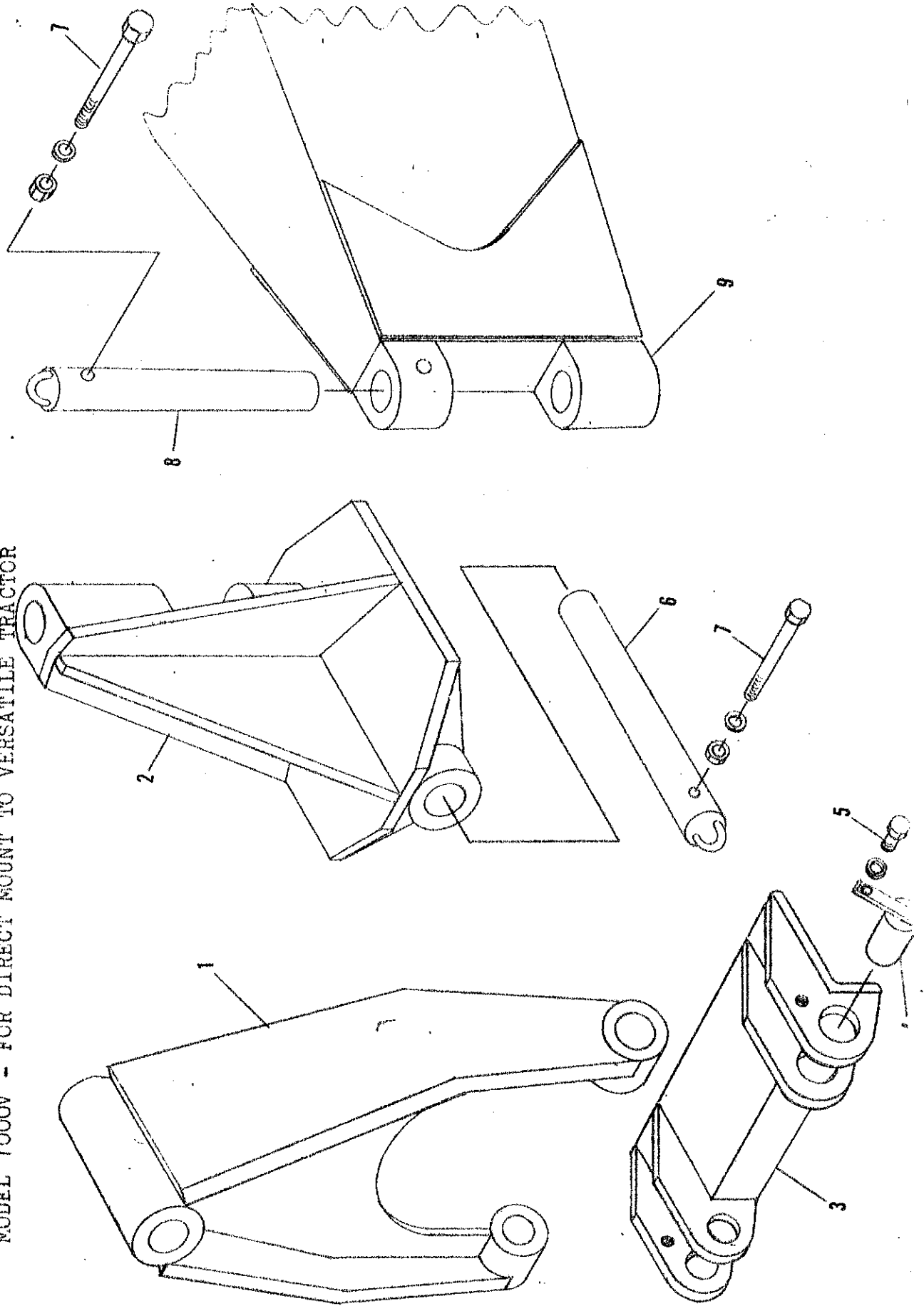
P A R T S L I S T
F R A M E A S S E M B L Y

MODEL 1000 SCRAPER

<u>KEY NO.</u>	<u>PART NO.</u>	<u>DESCRIPTION</u>
1.	A60H01A	Hydraulic hose, 1/2" x 18"
2.	A100H03	Hydraulic hose, 1/2" x 42"
3.	A10020	Pin, 1 1/4" x 3 1/2" w/ 1/4" x 2" cotter pin
4.	A10002	Pin, 2 1/4" x 6 7/8" w/ tab head
5.	A10001	Bushing, 2 3/4" x 2 1/4" x 4 3/8" lg.
6.	A10017 A10018	Frame - 4 wheel (model 1000D) Frame - 2 wheel (model 1000V)
7.	A10019	Plumbing guard
8.	-----	Capscrew, 1/2" NC x 1 1/4" w/ lockwasher
9.	A10004	Cast socket half, rear
10.	A10005	Cast socket half, front, w/ zerk
11.	-----	Bolt, 5/8" NC x 4" w/ nut & lockwasher
12.	A10050	Pin, 1 1/4" x 3 1/8" w/ sq. head & 1/4" x 1 3/4" cotter pin

I L L U S T R A T I O N - M O U N T I N G A S S E M B L Y

M O D E L 1 0 0 0 V - F O R D I R E C T M O U N T T O V E R S A T I L E T R A C T O R

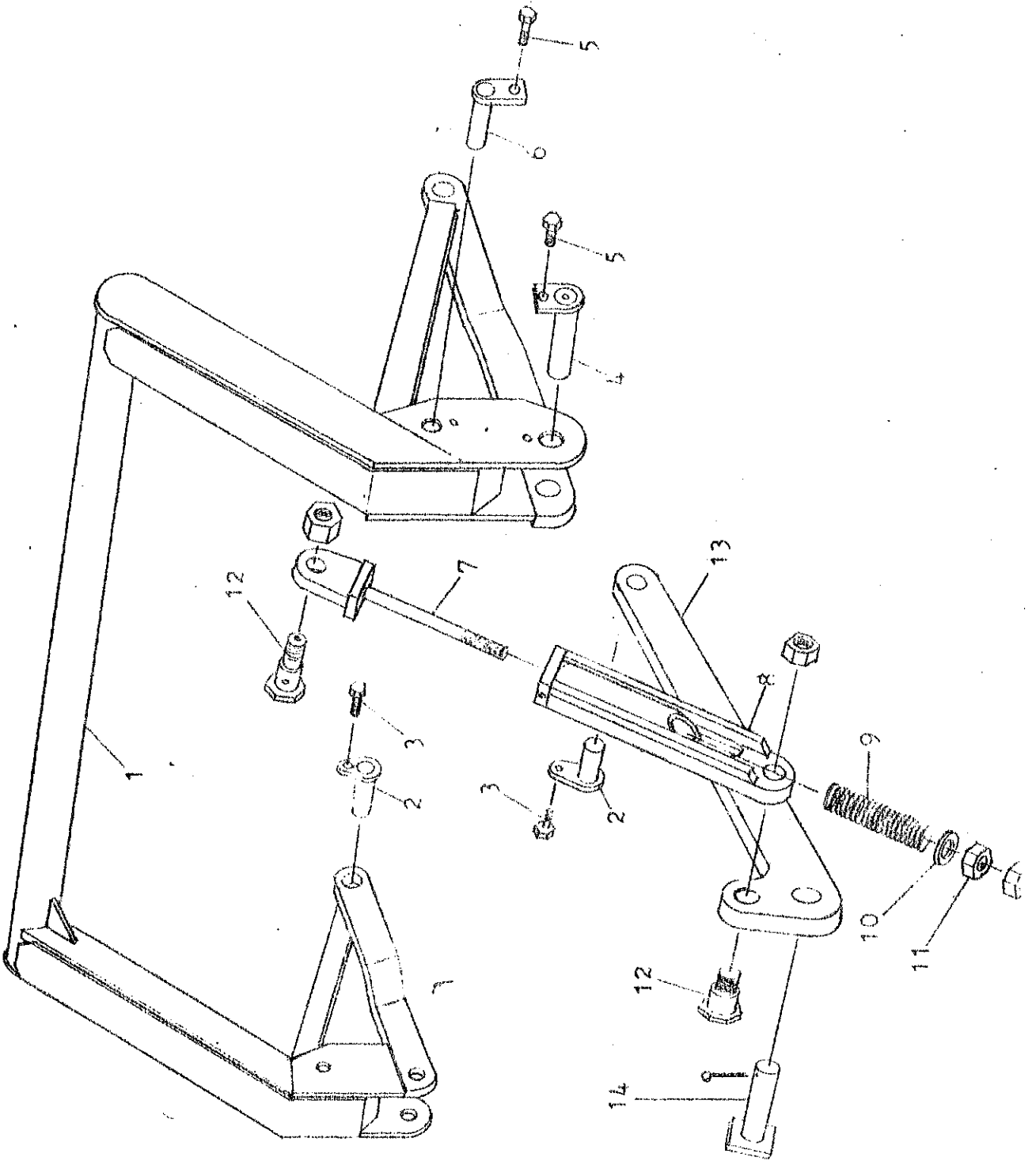


PARTS LIST
MOUNTING ASSEMBLY

MODEL 1000V ONLY

<u>KEY NO.</u>	<u>PART NO.</u>	<u>DESCRIPTION</u>
1.	A10021	Pivot bracket
2.	A10022	Swivel bracket
3.	A10023	Mounting bracket
4.	A10024	Pin, 3" x 5 1/4" w/ tab head
5.	-----	Capscrew, 5/8" NC x 1 1/2"
6.	A10025	Pin, 3" x 20"
7.	-----	Bolt, 1/2" NC x 6" w/ nut & lockwasher
8.	A10026	Pin 3" x 24"
9.	A10018	Frame - 2 wheel (model 1000V)

ILLUSTRATION - ACTUATING ASSEMBLY

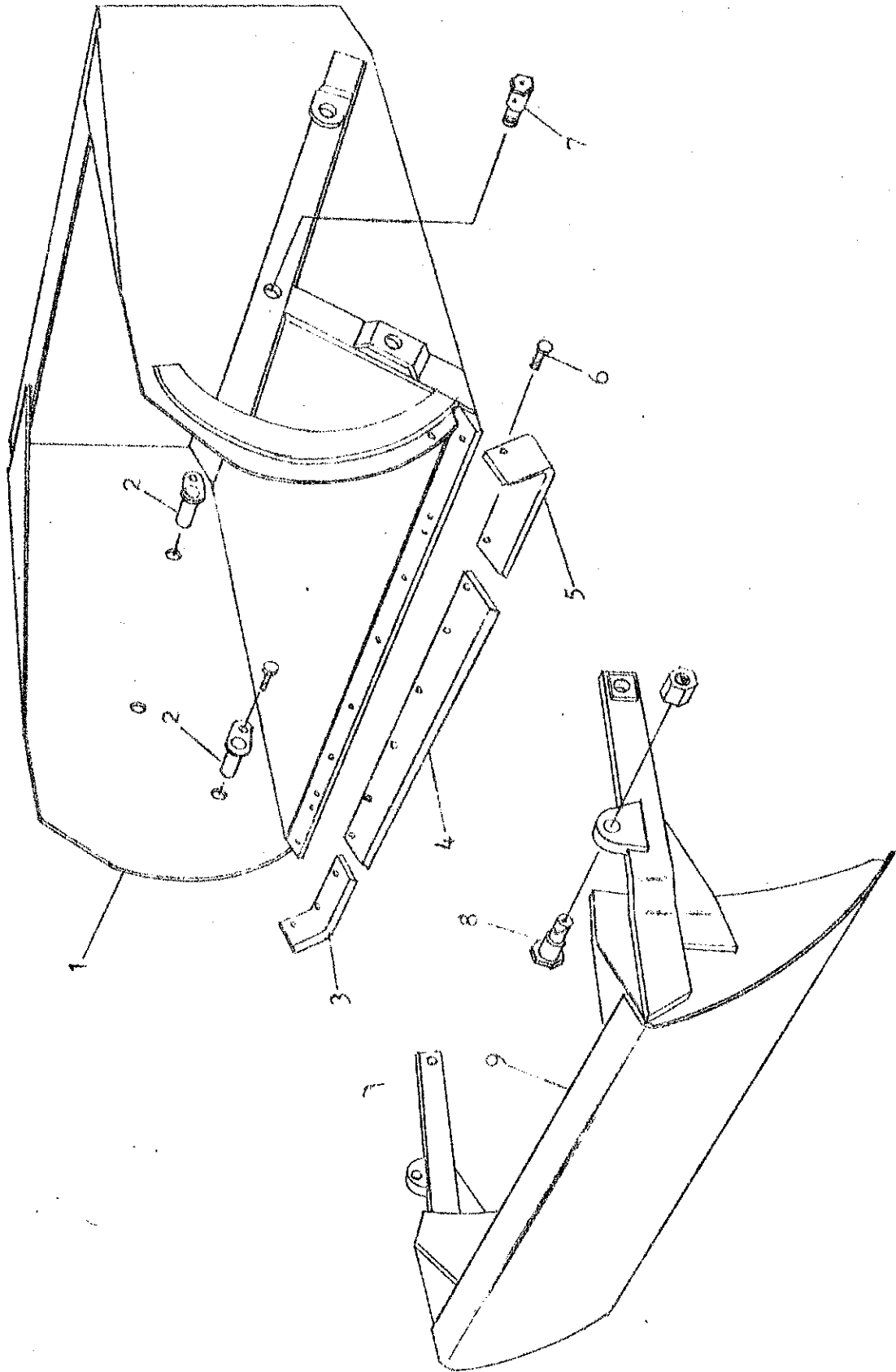


P A R T S L I S T
A C T U A T I N G A S S E M B L Y

MODEL 1000 SCRAPER

<u>KEY NO.</u>	<u>PART NO.</u>	<u>DESCRIPTION</u>
1.	A10027	Actuating frame
2.	A10003	Pin, 1 3/4" x 3 1/4" w/ tab head
3.	-----	Bolt, 5/8" NC x 1 1/2" w/nut & lockwasher
4.	A10028	Pin, 2 1/4" x 6 7/8" w/ tab head
5.	-----	Capscrew, 5/8" NC x 1 1/2" w/ lockwasher
6.	A10029	Pin, 1 1/4" x 6 1/8" w/ tab head
7.	A10006	Actuating link, upper half
8.	A10007	Actuating link, lower half
9.	A6018	Spring, compression, 2" OD x 10" long
10.	-----	Washer, 1" narrow rim
11.	-----	Nut, 1" NF
12.	A10008	Shoulder pin, 1 5/8" to 1 1/4" w/ zerk in Th'd. end & self lock nut
13.	A10030	Front actuating arm
14.	A10009	Pin, 1 3/4" x 4 1/8" w/ 1/4" x 2 1/2" cotter pin

ILLUSTRATION - BUCKET & APRON ASSEMBLY



P A R T S L I S T

B U C K E T & A P R O N A S S E M B L Y

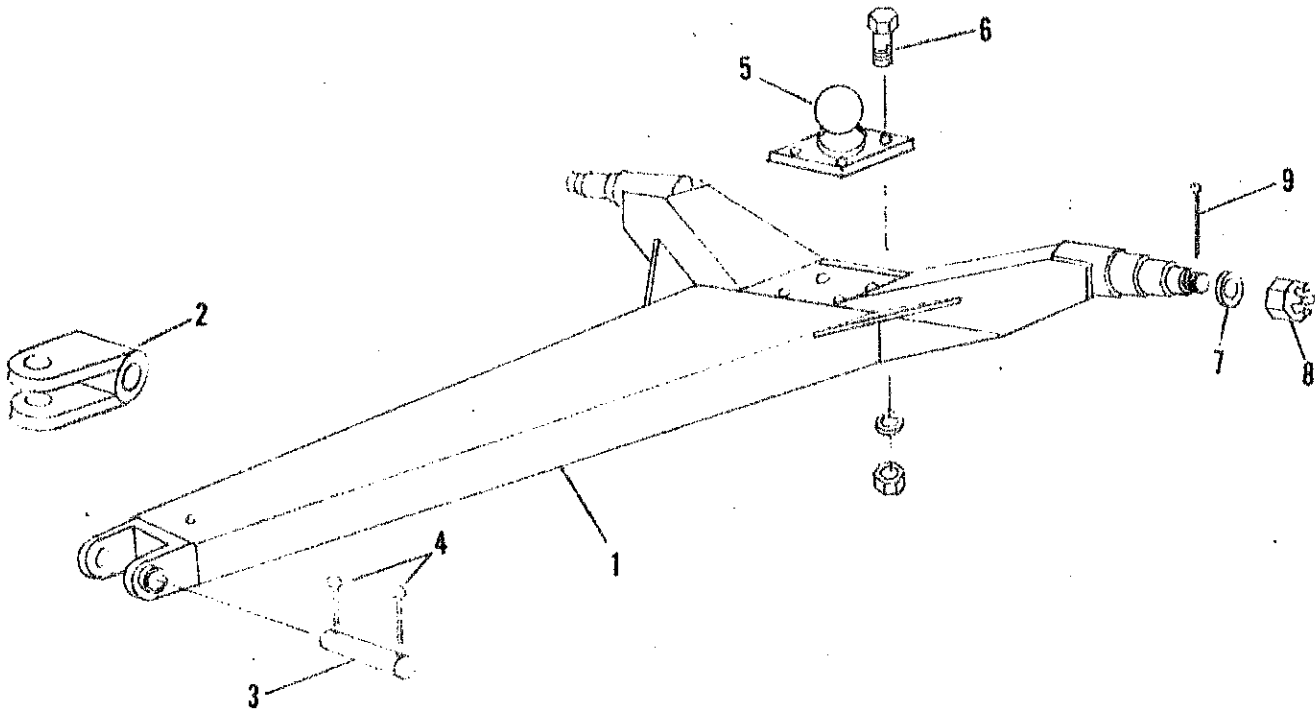
MODEL 1000 SCRAPER

<u>KEY NO.</u>	<u>PART NO.</u>	<u>DESCRIPTION</u>
1.	A10051	Bucket
2.	A10003	Pin, 1 3/4" x 3 1/4" w/ tab head
3.	A10010	Right cutting edge
4.	A10012	Center cutting edge
5.	A10011	Left cutting edge
6.	-----	Flow bolt, 5/8" NC x 2" w/ nut (heat treated)
7.	A6010	Shoulder pin, 1 5/8" to 1 1/4" w/zerk in head & 1 1/4"NF self lock nut
8.	A10008	Shoulder pin, 1 5/8" to 1 1/4" w/ zerk in th'd. end and 1 1/4" NF self lock nut
9.	A10031	Apron

I L L U S T R A T I O N

POLE & AXLE ASSEMBLY

MODEL 1000D SCRAFER



P A R T S L I S T

POLE & AXLE ASSEMBLY

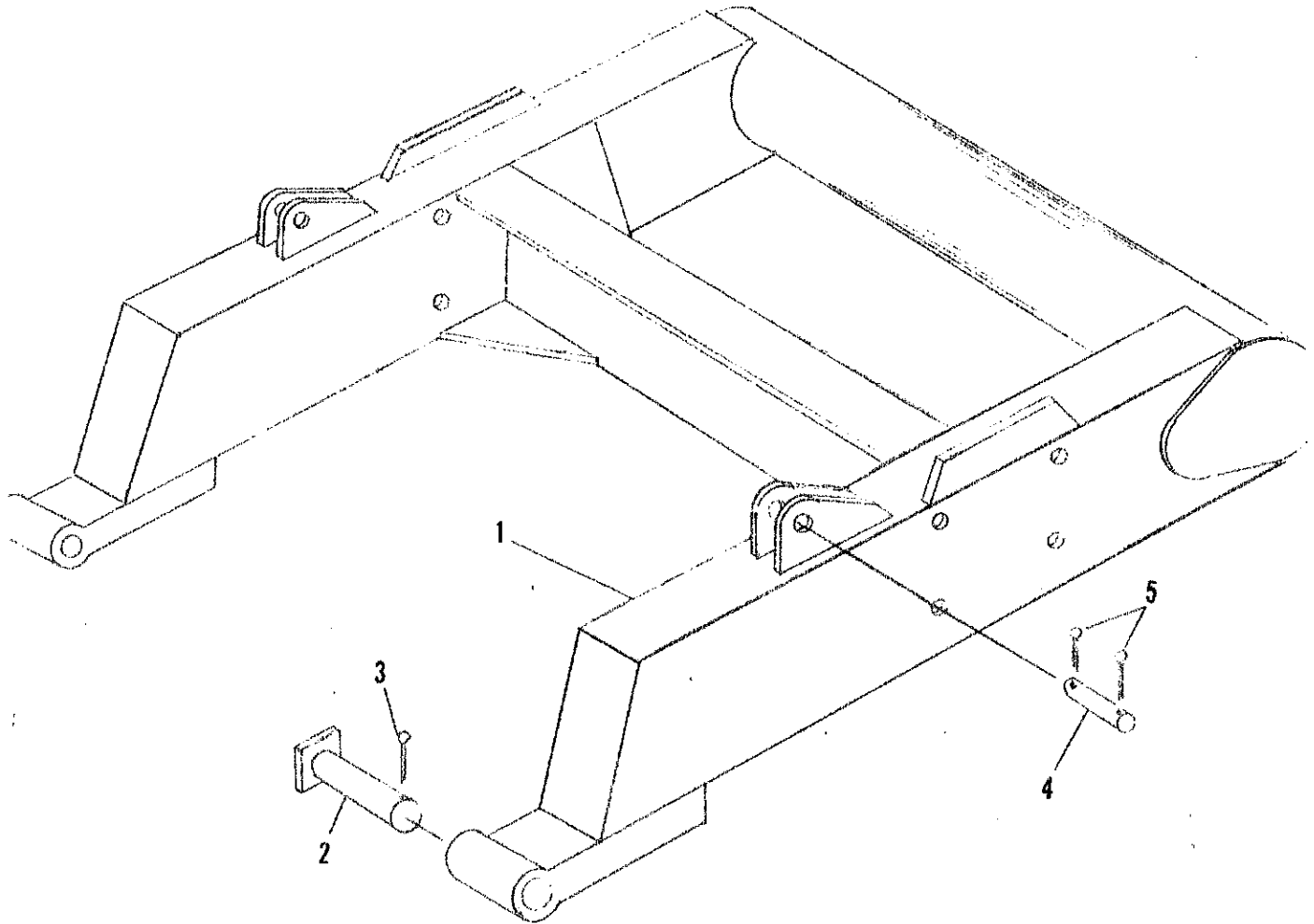
MODEL 1000D ONLY
KEY NO. PART NO.

DESCRIPTION

1.	A10032	Pole & axle
2.	A10033	Swivel hitch
3.	A10034	Pin, 1 1/2" x 6 1/4"
4.	-----	Cotter pin, 1/4" x 2 1/2"
5.	A10035	Ball swivel
6.	-----	Bolt, 3/4" NC x 3" w/ Nut & lockwasher
7.	A2239	Washer, special, 7/8" flat
8.	-----	Nut, 7/8" NF castle.
9.	-----	Cotter pin, 3/16" x 2"

I L L U S T R A T I O N

R E A R F R A M E S E C T I O N

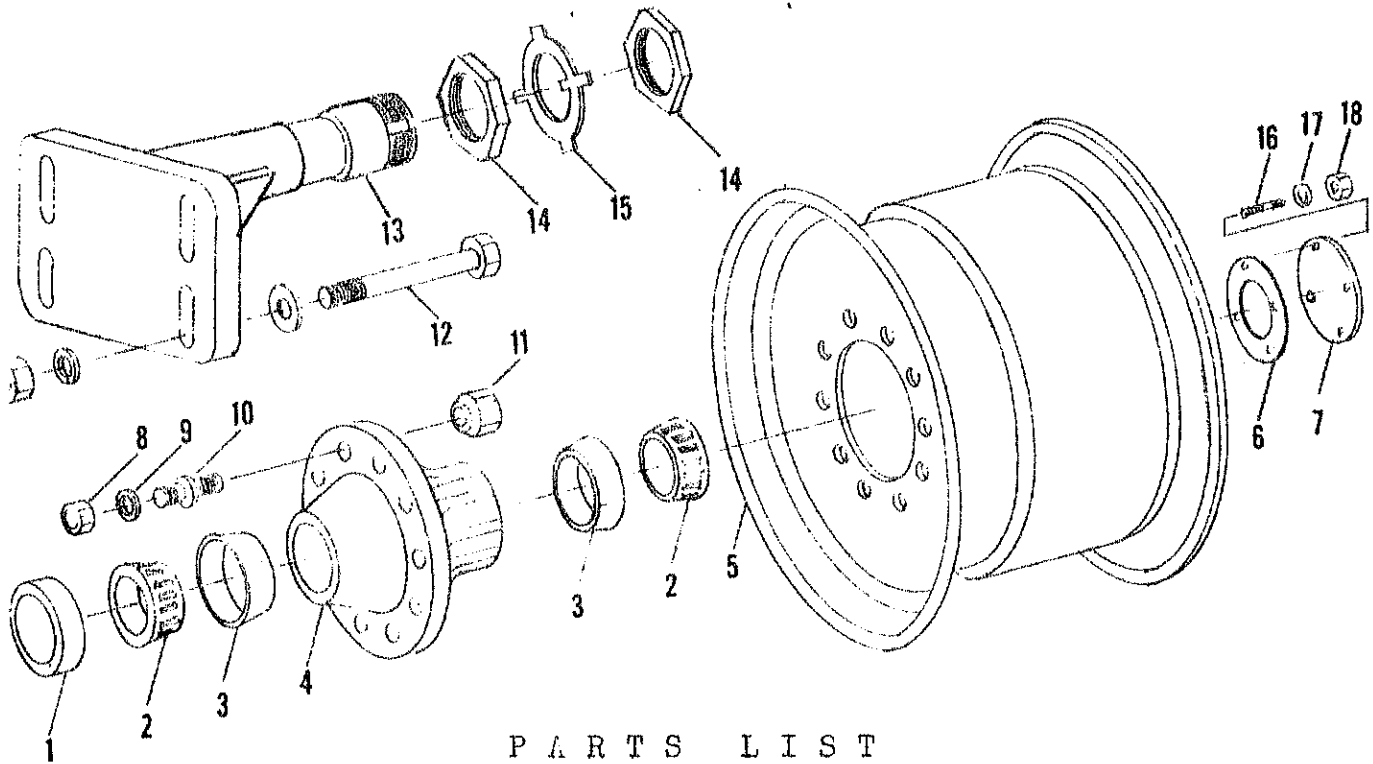


P A R T S L I S T

R E A R F R A M E S E C T I O N

<u>MODEL 1000</u>	<u>SCRAPER</u>	
<u>KEY NO.</u>	<u>PART NO.</u>	<u>DESCRIPTION</u>
1.	A10036	Rear frame
2.	A10037	Pin, 2" dia. x 6 7/8"
3.	-----	Cotter pin, 5/16" x 2 3/4"
4.	A10038	Pin, 1 1/4" x 4 1/4"
5.	-----	Cotter pin, 1/4" x 1 3/4"
	A100H01	Hydraulic hose, 1/2" x 24"
	A100H02	Hydraulic hose, 1/2" x 36"

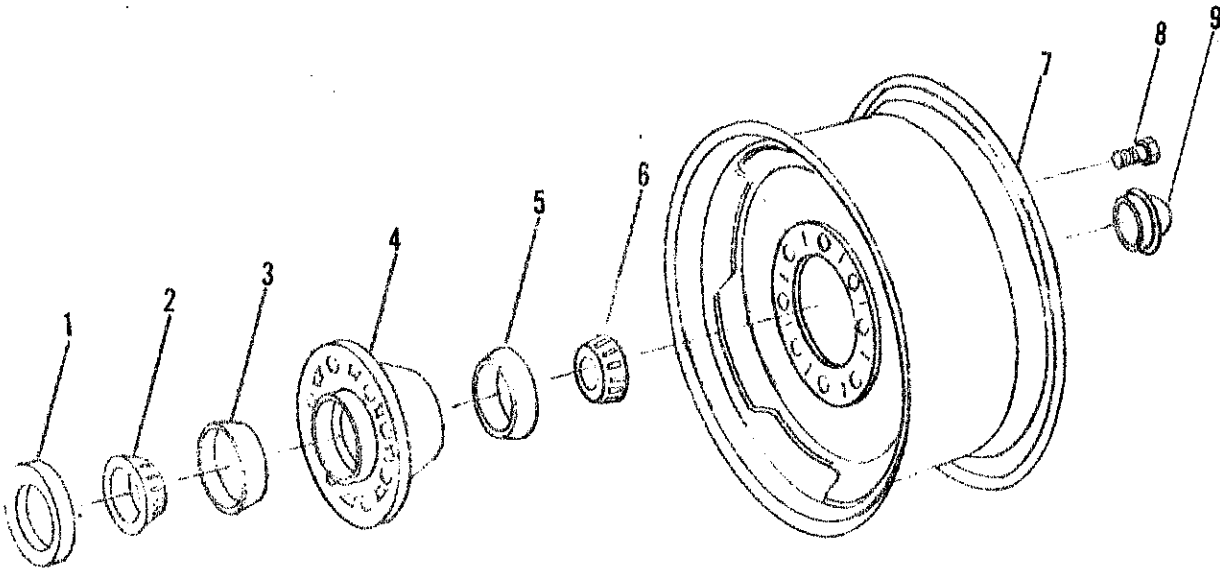
I L L U S T R A T I O N - R E A R W H E E L , S P I N D L E & H U B A S S E M .



P A R T S L I S T
R E A R W H E E L , S P I N D L E & H U B A S S E M B L Y

MODEL 1000 KEY NO.	SCRAPER PART NO.	DESCRIPTION
1.	A10013	Grease seal
2.	A10014	Bearing cone
3.	A10015	Bearing cup
4.	A10016	Hub (less bearings)
5.	A10039	Wheel, 16" x 26" drop center
6.	A10040	Gasket
7.	A10041	Hub cap
8.	-----	Nut, 3/4" NF
9.	A10042	Bushing
10.	A10043	Lug, L.H. th'd.
	A10044	Lug, R.H. th'd.
11.	A10045	Lug nut, L.H. th'd
	A10046	Lug nut, R.H. th'd
12.	-----	Bolt, 1" NF x 7" lg., w/ nut & l.w.
13.	A10047	Spindle
14.	A10048	Spindle nut
15.	A10049	Lock collar
16.	-----	Stud bolt, 1/2" NF
17.	-----	Lock washer, 1/2"
18.	-----	Nut, 1/2" NF

ILLUSTRATION - FRONT WHEEL AND HUB ASSEMBLY
 MODEL 1000D ONLY



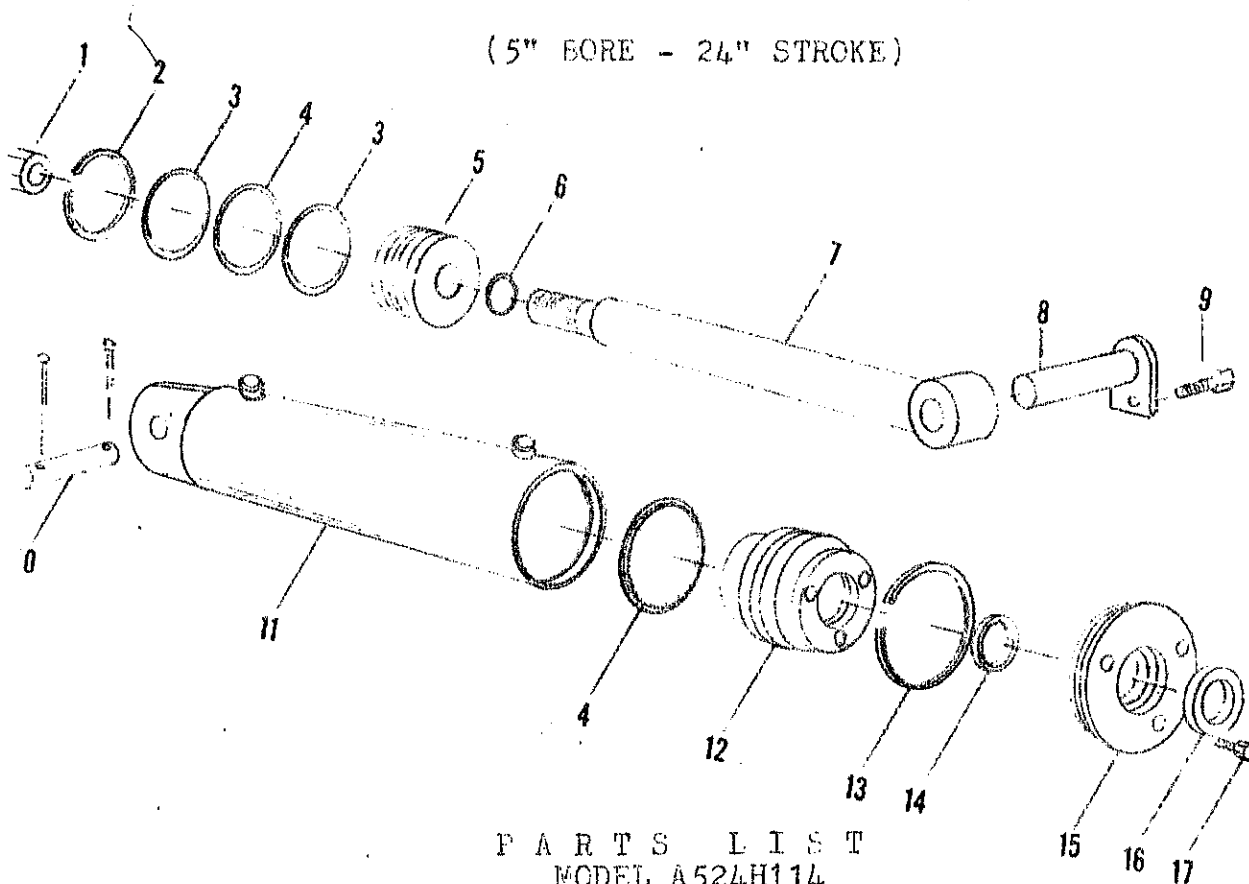
PARTS LIST

FRONT WHEEL, HUB & SPINDLE ASSEMBLY

MODEL 1000D ONLY

<u>KEY NO.</u>	<u>PART NO.</u>	<u>DESCRIPTION</u>
1.	A4512	Grease seal
2.	A4513	Bearing cone, (inner)
3.	A4514	Bearing cup, (inner)
4.	A4515	Hub (less bearings)
5.	A2233	Bearing cup, (outer)
6.	A4516	Bearing cone (outer)
7.	A10052	Wheel, 11 x 16A, drop center
8.	A4519	Wheel bolt, 9/16 NF
9.	A2235	Hub cap

ILLUSTRATION
HYDRAULIC CYLINDER
(5" BORE - 24" STROKE)



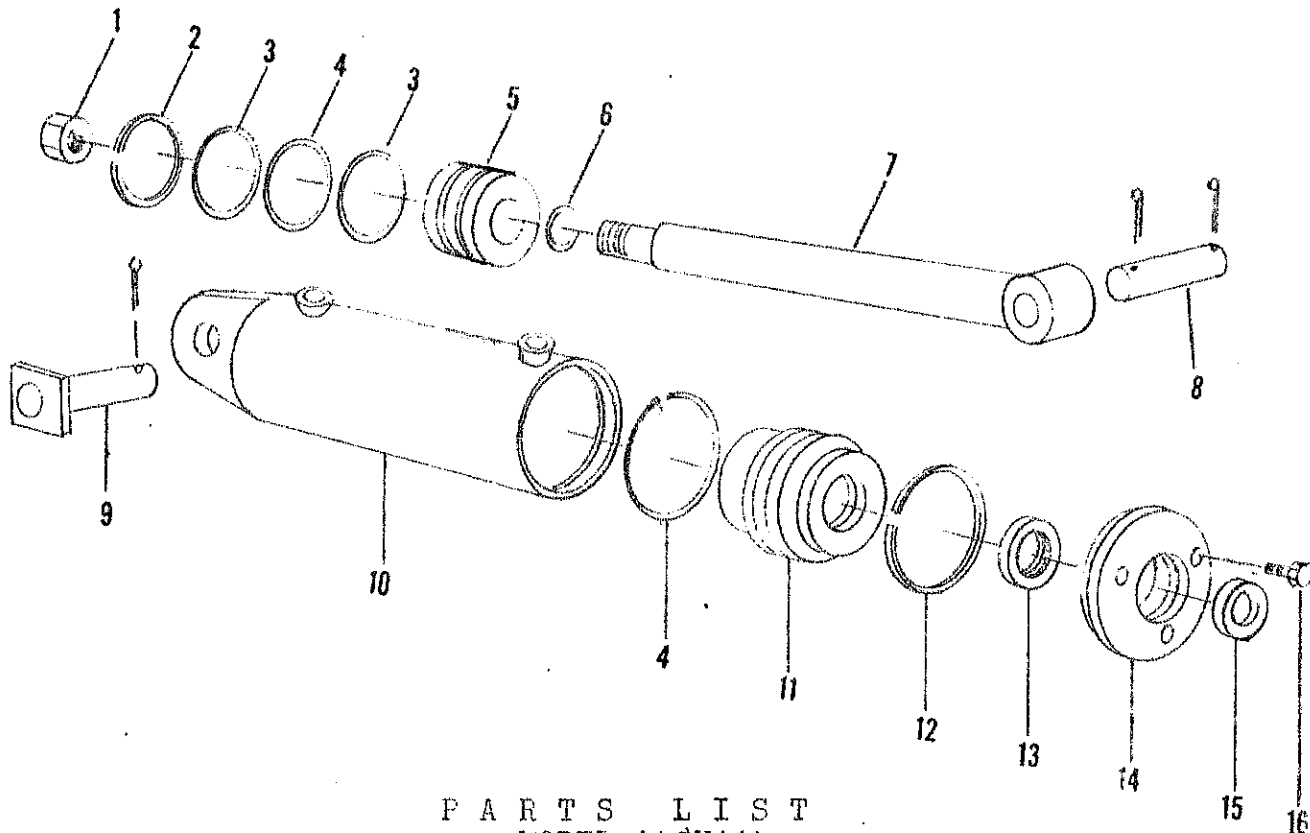
PARTS LIST
MODEL A524H114

MODEL 1000 SCRAPLER
KEY NO. PART NO.

DESCRIPTION

1.	A400H17	Piston nut, 1 1/4"
2.	A400H04	Cast iron ring, 5" OD
3.	A400H05	Back up washer, 5" OD
4.	A400H06	O-ring seal, 5" OD x 1/4"
5.	A400H07	Piston, 5"
6.	A60H52	Piston O-ring, 1 1/4" ID x 1/8"
7.	A100H04	Shaft, 2" dia.
8.	A10029	Pin, 1 1/4" x 6 1/8"
9.	-----	Cap screw, 5/8" NC x 1 1/2" w/ lockwasher
10.	A10020	Pin, 1 1/4" x 3 1/4"
	-----	Cotter pin, 1/4" x 2"
11.	A100H05	Barrel assembly
12.	A400H10	Head gland
13.	A400H11	Retainer ring
14.	A60H61	T-ring assembly
15.	A400H13	Head Cap
16.	A22H18	Cap screw, 1/4" x 1" NC
17.	A400H14	Wiper seal, 2" ID
	A400H15A	Packing kit, containing:
		1 A400H04 1 A400H11
		2 A400H05 1 A60H61
		2 A400H06 1 A400H14
		1 A60H52

ILLUSTRATION
HYDRAULIC CYLINDER
(4" BORE - 8" STROKE)



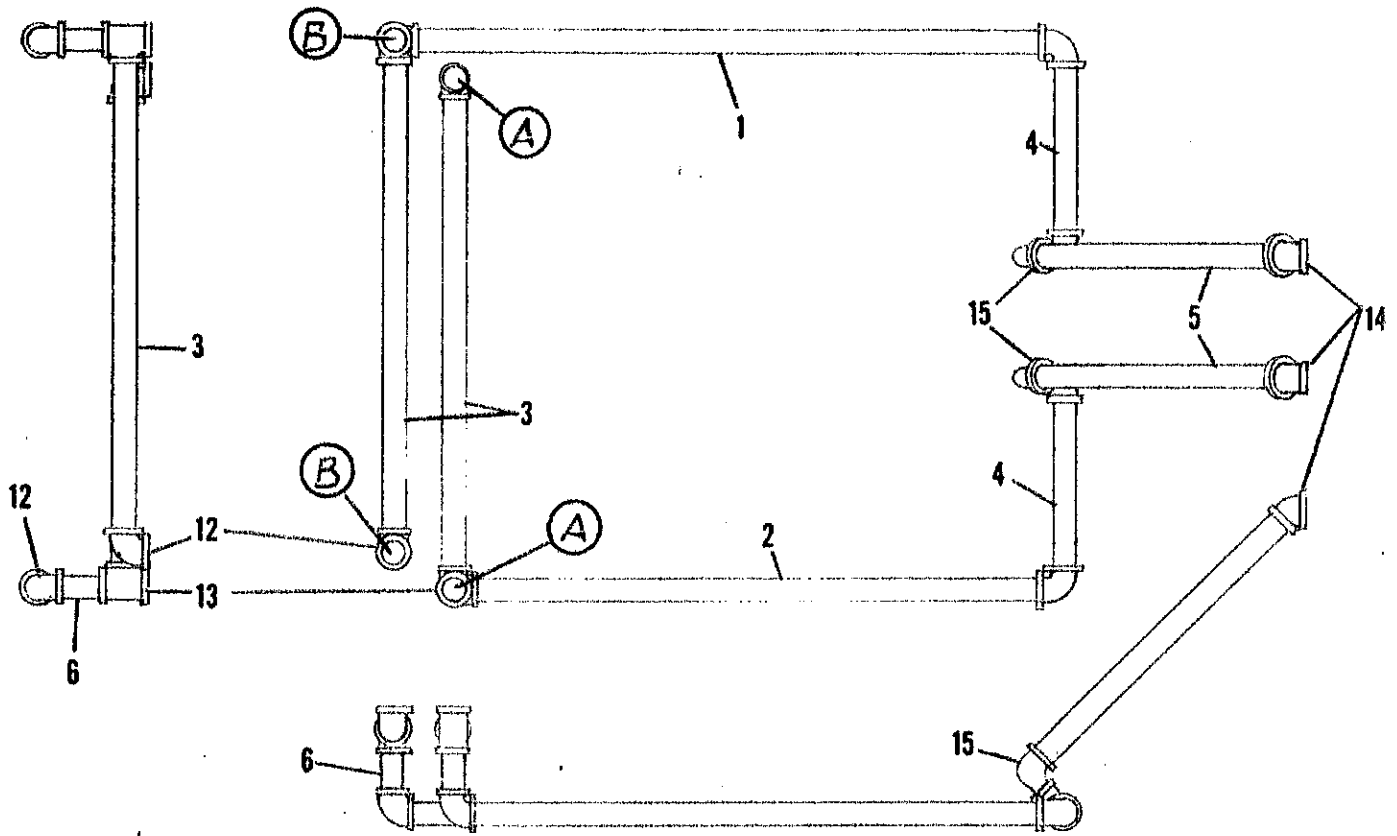
P A R T S L I S T
MODEL A48H114

MODEL 1000 SCRAPER
KEY NO. PART NO.

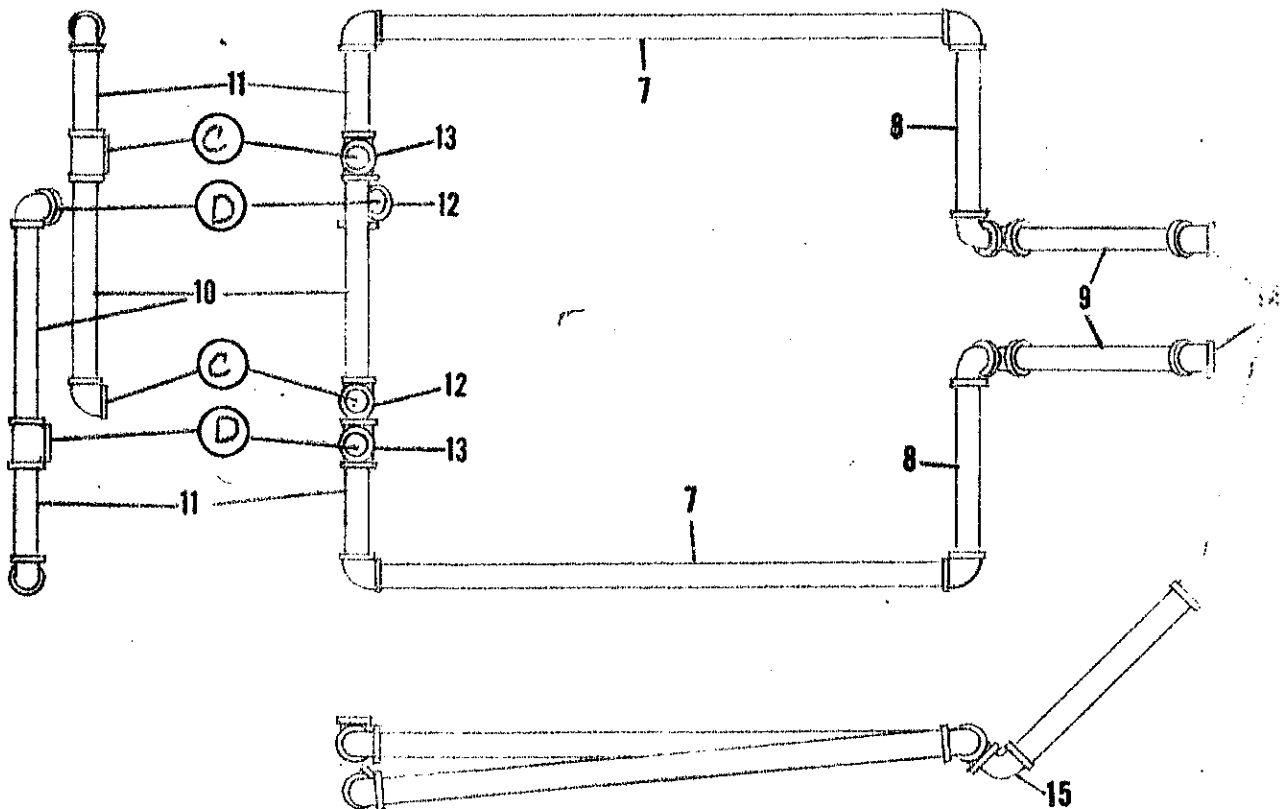
DESCRIPTION

1.	A300HC3	Piston nut, 1" NF
2.	A300H04	Cast iron ring, 4" OD
3.	A300H05	Back-up washer
4.	A300H06	O-ring seal, 4" CD x 3/16
5.	A300H07	Piston, 4" OD
6.	A45H05	Piston O-ring, 1" ID
7.	A100H06	Shaft, 1 1/2"
8.	A1C038	Pin, 1 1/4" x 4 1/4"
9.	A10050	Cotter pin, 1/4" x 1 3/4"
		Pin, 1 1/4" x 3 1/8"
10.	A100H07	Cotter pin, 1/4" x 1 3/4"
		Barrel assembly
11.	A300H11	Head gland
12.	A300H12	Retainer ring
13.	A45H61	T-ring assembly, 1 1/2" ID
14.	A300H13	Head Cap
15.	A22H18	Socket head capscrews, 1/4" x 1"
16.	A22H17	Wire seal, 1 1/2" ID
	A300H14A	1 A300H04 1 A300H12
		2 A300H05 1 A45H61
		2 A300H06 1 A22H17
		1 A300H08

ILLUSTRATION - PLUMBING ASSEMBLY
ACTUATING CYLINDER PIPING DIAGRAM



REAR CYLINDER PIPING DIAGRAM



P A R T S L I S T
HYDRAULIC PIPE, FITTINGS & HOSES

MCDEL 1000 SCRAPER

PIPE

<u>KEY NO.</u>	<u>LENGTH</u>	<u>QTY.</u>	<u>DESCRIPTION</u>
1.	115 1/2"	1	1/2" standard black pipe
2.	114 1/2"	1	" " " "
3.	109"	2	" " " "
4.	39"	2	" " " "
5.	44"	2	" " " "
6.	3"	2	" " " "
7.	112 3/4"	2	" " " "
8.	39 1/2"	2	" " " "
9.	44 1/2"	2	" " " "
10.	47 3/4"	2	" " " "
11.	23 3/4"	2	" " " "

PIPE FITTINGS

<u>KEY NO.</u>	<u>QTY.</u>	<u>DESCRIPTION</u>
12.	16	1/2" NPT x 90° elbow
13.	4	1/2" NPT tee
14.	4	1/2" NPT x 45° elbow
15.	4	1/2" NPT x 90° street elbow

HYDRAULIC HOSES - 1/2" 2 wire

<u>LENGTH</u>	<u>QTY.</u>	<u>PART NO.</u>	<u>LOCATION</u>
18"	2	A60H01A	"A" to base of actuating cylinder
42"	2	A100H03	"B" to rod end of actuating cyl.
24"	2	A100H01	"C" to base of rear cylinder
36"	2	A100H02	"D" to rod end of rear cylinder

SWIVEL ADAPTORS

<u>QTY.</u>	<u>PART NO.</u>	<u>DESCRIPTION</u>
4	A45H07	3/8" male to 1/2" female x 90° (used on each port of rear cylinders)
4	A400H02	1/2" male to 1/2" female x 90° (used on each port of Act. cylinders)