

Ashland **INDUSTRIES, INC.™**

*Quality
Equipment
Since
1953*

I-900 PARTS MANUAL

I-900 ver 4-04



Ashland Industries Inc.
1115 Rail Drive
P.O. Box 717
Ashland, WI. 54806
Ph: 877-634-4622 *Toll Free*
Ph: 715-682-4622
Fx: 715-682-9717
www.ashlandind.com

MEMBER
CIMA
CONSTRUCTION INDUSTRY
MANUFACTURERS ASSOCIATION



HOW TO ORDER PARTS:

IMPORTANT

Parts must be ordered through your local authorized ASHLAND dealer.

Be sure to state MODEL and SERIAL NUMBER of your machine, PART NUMBER, DESCRIPTION and QUANTITY needed.

Unless this is done, we cannot provide prompt service or assure shipment of the correct parts.



Ashland Industries weldable replacement parts are available to rebuild, modify or update your scraper to current factory specifications.

INDEX

| | |
|------------|---|
| Page 3. | Safety Guidelines |
| Page 4. | Operators and Maintenance Instructions |
| Page 5. | Illustration - Assembly |
| Page 6. | Illustration and Parts List - Gooseneck Frame Assembly |
| Page 7. | Illustration and Parts List - Apron Assembly |
| Page 8. | Illustration and Parts List - Bowl and Frame Assembly |
| Page 9. | Illustration and Parts List - Push Off Gate Assembly |
| Page 10. | Illustration and Parts List - Pole and Axle Assembly |
| Page 11. | Illustration and Parts List - Wheel Hub and Spindle Assembly |
| Page 12. | Illustration and Parts List - Hydraulic Cylinder, 4" x 16" |
| Page 13. | Illustration and Parts List - Hydraulic Cylinder, 3-1/2" x 10", Right |
| Page 14. | Illustration and Parts List - Hydraulic Cylinder, 4" x 50" |
| Page 15-16 | Illustration and Parts List - Hydraulic Circuit |
| Page 17. | Illustration and Parts List - Hydraulic Manifold Assembly |
| Page 18. | Instructions for Adjusting Hydraulic Manifold Assembly |
| Page 19. | Warranty Statement |



SAFETY SIGNAL WORDS

Note the use of the signal words *DANGER*, *WARNING* and *CAUTION* with the safety messages. The appropriate signal word for each has been selected using the following guidelines:

DANGER: Indicates an imminently hazardous situation that, if not avoided, will result in death or serious injury. This signal word is to be limited to the most extreme situations typically for machine components which, for functional purposes, cannot be guarded.



WARNING: Indicates a potentially hazardous situation that, if not avoided, could result in death or serious injury, and includes hazards that are exposed when guards are removed. It may also be used to alert against unsafe practices.



CAUTION: Indicates a potentially hazardous situation that, if not avoided, may result in minor or moderate injury. It may also be used to alert against unsafe practices.



GENERAL SAFETY GUIDELINES

Safety of the operator is one of the main concerns in designing and developing a new piece of equipment. Designers and manufacturers build in as many safety features as possible. However, every year many accidents occur which could have been avoided by a few seconds of thought and a more careful approach to handling equipment. You, the operator, can avoid many accidents by observing the following precautions in this section. To avoid personal injury, study the following precautions and insist those working with you, or for you, follow them.

Replace any CAUTION, WARNING, DANGER or instruction safety decal that is not readable or is missing. Location of such decals is indicated in this booklet.

Do not attempt to operate this equipment under the influence of drugs or alcohol.

Review the safety instructions with all users annually.

This equipment is dangerous to children and persons unfamiliar with its operation. The operator should be a responsible adult familiar with farm machinery and trained in this equipment's operations. **Do not allow persons to operate or assemble this unit until they have read this manual and have developed a thorough understanding of the safety precautions and of how it works.**

To prevent injury or death, use a tractor equipped with a Roll Over Protective System (ROPS). Do not paint over, remove or deface any safety signs or warning decals on your equipment. Observe all safety signs and practice the instructions on them.

Never exceed the limits of a piece of machinery. If its ability to do a job, or to do so safely, is in question - **DON'T TRY IT.**

OPERATORS AND MAINTENANCE INSTRUCTIONS

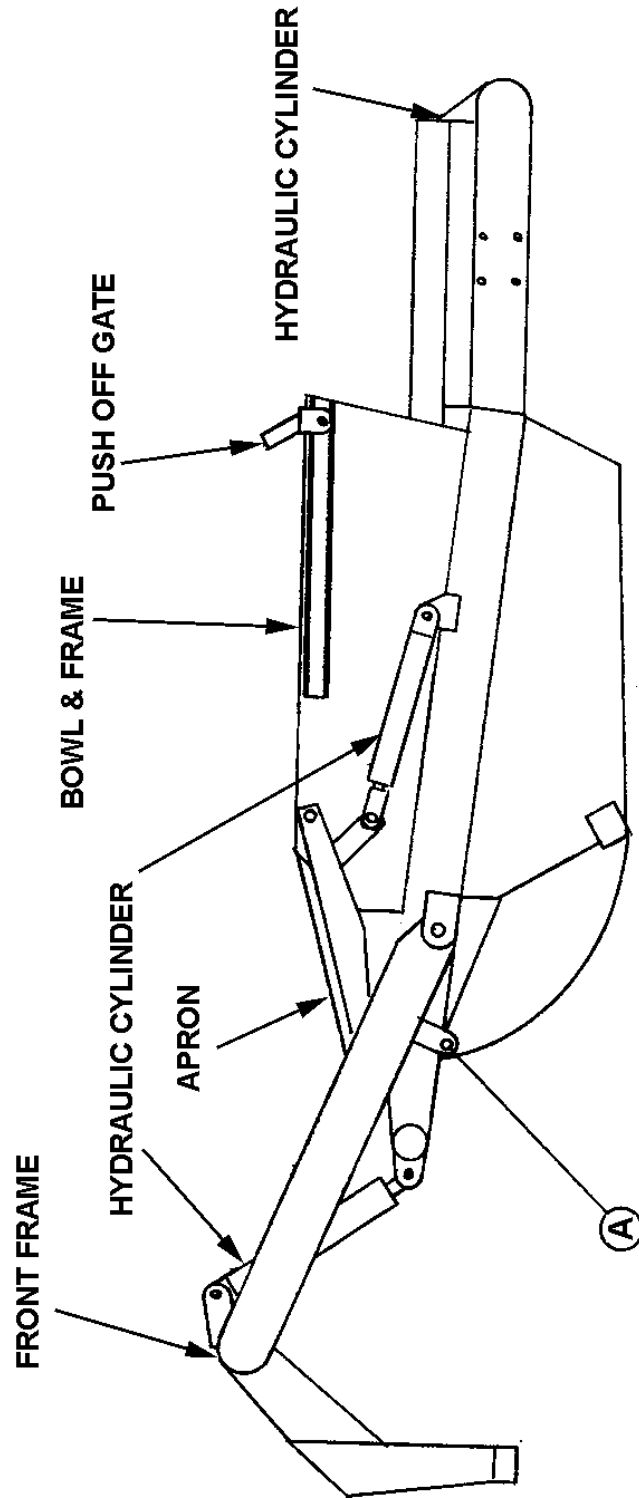
This scraper is a durable piece of equipment and with proper care will yield many years of trouble free operation. The scraper requires a power source with TWO 4 way (double acting) hydraulic control valves.

The scraper should be greased at all points where grease fittings are provided. Connect hydraulic hoses to the tractor and retract lift cylinders to **REMOVE TRANSPORT LOCK PINS** (point A), then extend and retract all cylinders several times to force out any air from the hydraulic cylinders and lines. Check the oil levels in the tractor hydraulic system and add to maintain the proper level. Care should be used when adding oil or when disconnecting any oil line to keep all dirt out of the oil as dirt is a major factor in the failure of hydraulic components.

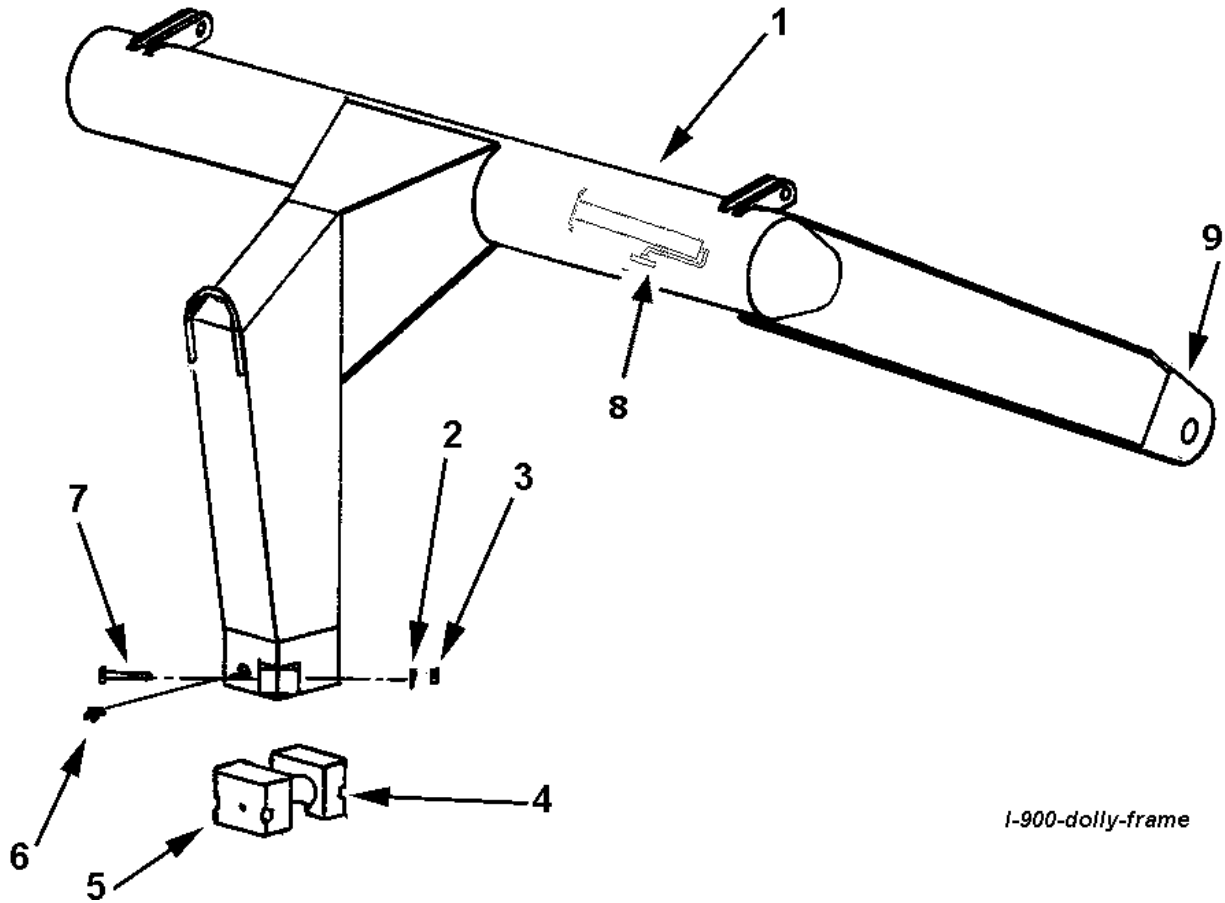
When the scraper is placed into operation, the operator will have to "feel out" the amount of depth of cut to obtain maximum loading efficiency. This is usually accomplished by taking a lesser and more uniform cut; however, some soil conditions such as loose sand may require a "pumping action" obtained by taking successive deep cuts and lifting out of cut as the tractor begins to lose power or traction.

1. After 10 hours work, all bolts should be checked and tightened if necessary.
2. Every 10 hours all grease fittings should be lubricated.
3. After 50 hours work, all bolts should be rechecked and tightened if necessary. Check wheel bearings and adjust if necessary.
4. After 300 hours work, clean and repack wheel bearings and replace, if necessary, cutting edges, worn pins, etc.

ILLUSTRATION - ASSEMBLY



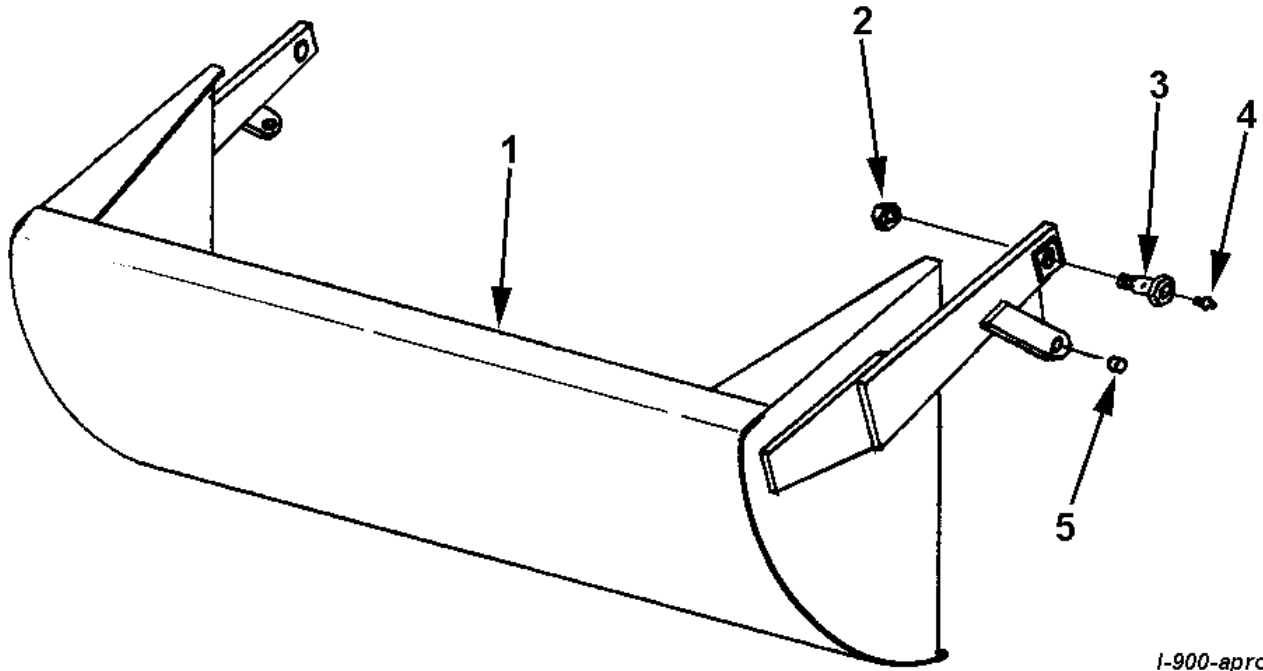
GOOSENECK FRAME ASSEMBLY



1-900-dolly-frame

| <u>KEY NO.</u> | <u>PART NO.</u> | <u>DESCRIPTION</u> |
|-----------------------|------------------------|--------------------------------------|
| 1 | A9057 | Gooseneck Frame |
| 2 | 8110 | Lock washer, 5/8" |
| 3 | 7530 | Nut, 5/8" NC |
| 4 | A90004 | Cast socket half, rear |
| 5 | A90005 | Cast socket half, front w/ zerk hole |
| 6 | A2206 | Grease zerk, long shank |
| 7 | AFB-00002 | Bolt, 5/8" NC x 4" |
| 8 | OPT-00001 | Hitch Jack |
| 9 | 14505 | Grease fitting |

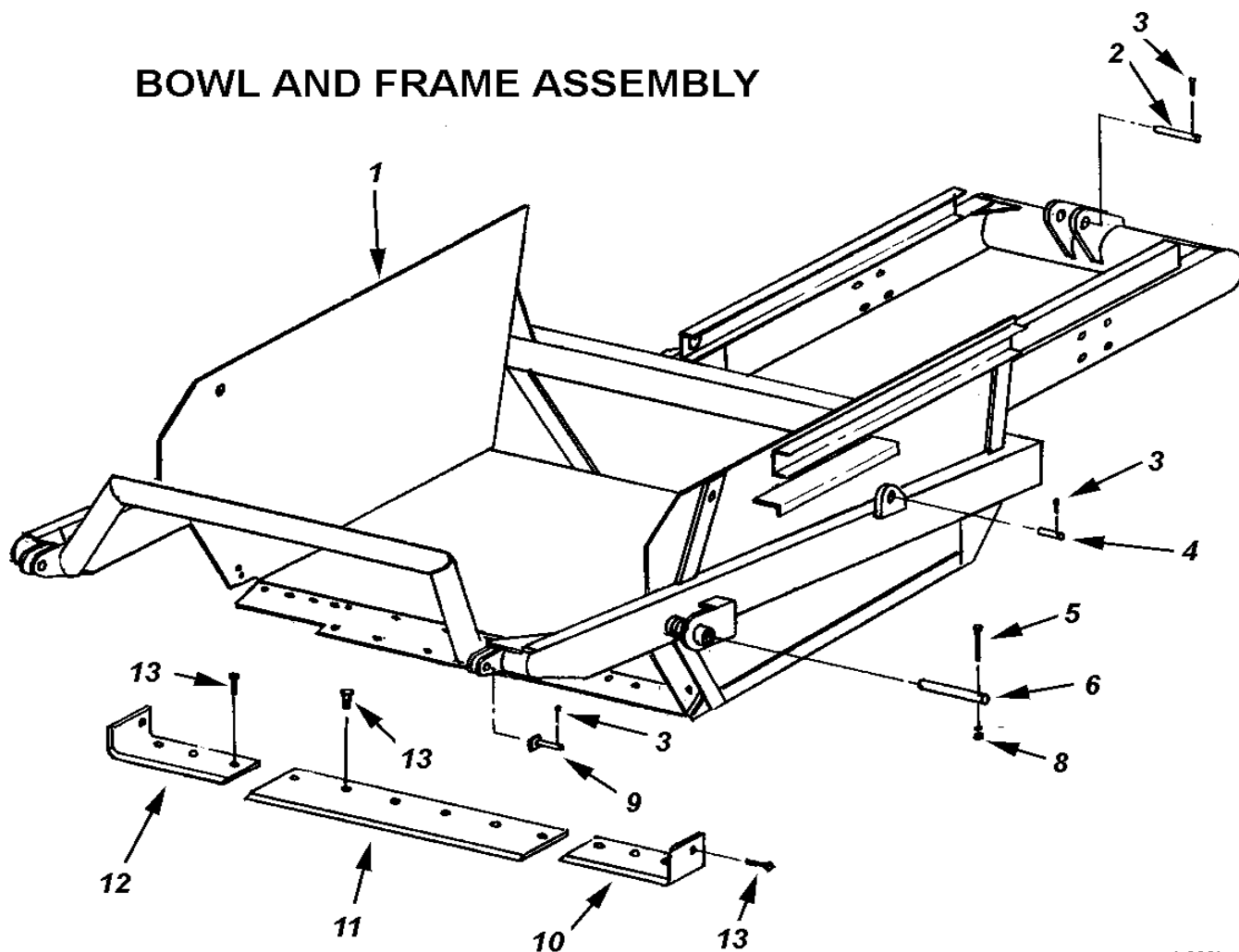
APRON ASSEMBLY



1-900-apron

| <u>KEY NO.</u> | <u>PART NO.</u> | <u>DESCRIPTION</u> |
|-----------------------|------------------------|--|
| 1 | A8060 | Apron |
| 2 | AFN-00009 | Self locking nut, 1-1/4" |
| 3 | A6010 | Shoulder pin, 1-5/8" to 1-1/4" with zerk in head |
| 4 | 14505 | Grease fitting |
| 5 | A10155 | Bushing, 1" ID x 1-1/2" OD x 1-1/8" long steel |

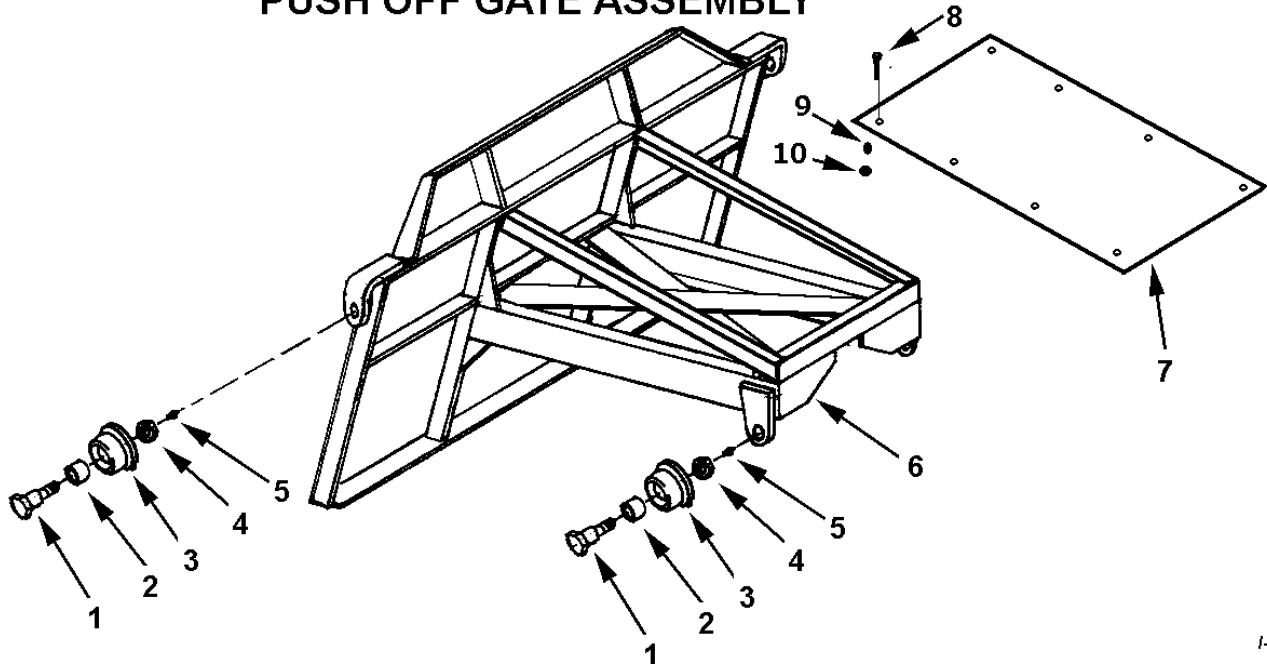
BOWL AND FRAME ASSEMBLY



I-900bowl

| KEY NO. | PART NO. | DESCRIPTION |
|----------------|--------------------------|--|
| 1 | A9055 | Bowl and Frame |
| 2 | A8062 | Pin, 1-1/4" x 7" |
| 3 | AFP-00002 | Cotter pin, 3/16" x 1-3/4" |
| 4 | A1217 | Pin, 1" x 3-1/2" |
| 5 | AFB-00054 | Bolt, 1/2" NC x 3-1/2" |
| 6 | A8056 | Pin, 1-3/4" x 7-3/4" |
| 8 | AFN-00011 | Nut, 1/2" NC |
| 9 | A10168 | Pin, 1-1/8" x 4-1/4" |
| 10 | A8031A | Left cutting edge, 3/4" x 6" used on s/n 17196 & up <i>Requires (4) 5/8" x 2" Plowbolts</i> |
| 11 | A8030 | Center cutting edge, 5/8" x 8" x 54" <i>Requires (6) 5/8" x 2" Plowbolts</i> |
| 12 | A8029A | Right cutting edge, 3/4" x 6", used on s/n 17196 & up <i>Requires (4) 5/8" x 2" Plowbolts</i> |
| 13 | PB8P-NC-063-0200 7530 | Plow bolt, 5/8" x 2" (14 req'd for all blades) Nut: 5/8" NC |

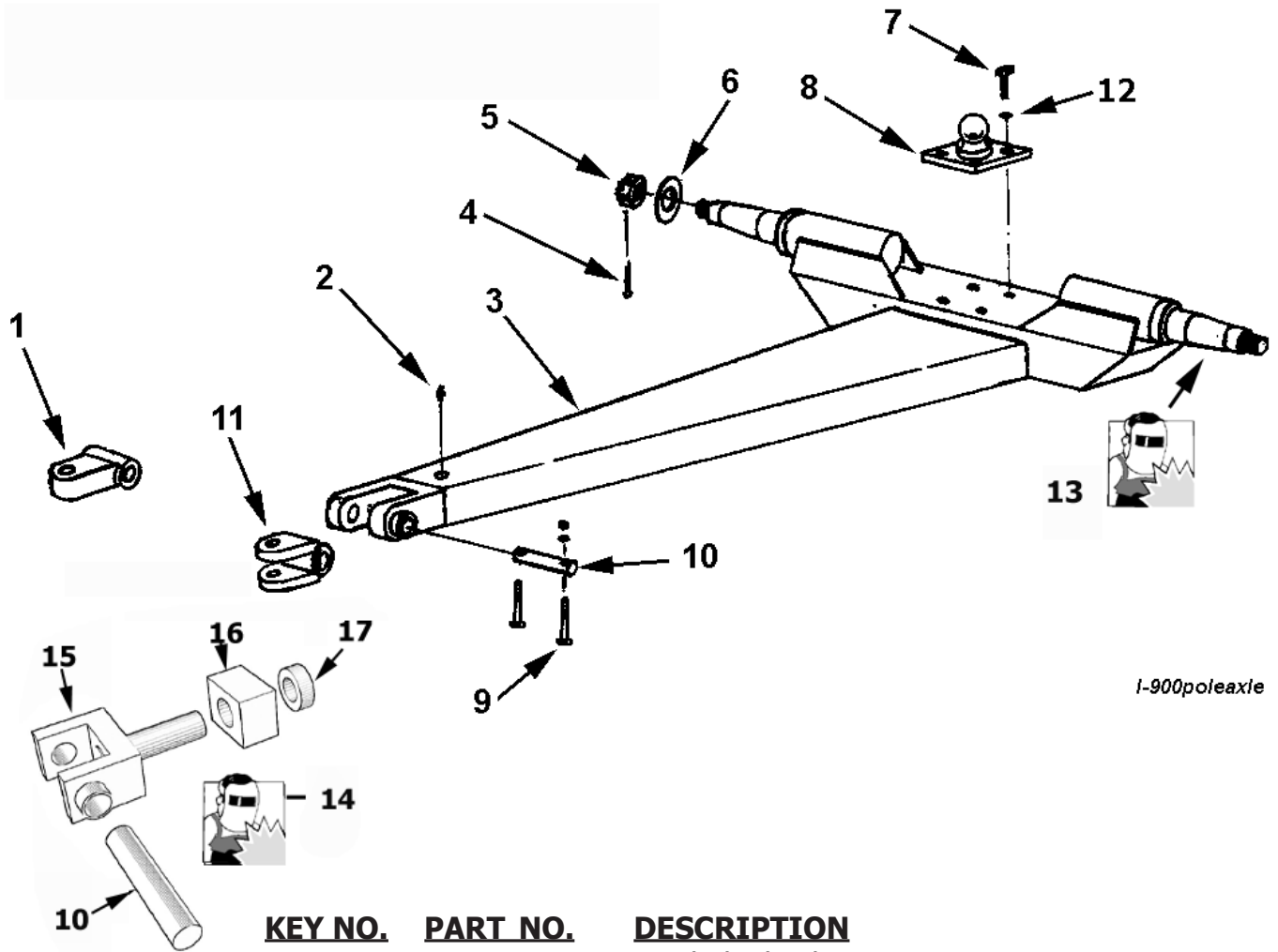
PUSH OFF GATE ASSEMBLY



I-900gate

| KEY NO. | PART NO. | DESCRIPTION |
|----------------|-----------------|--|
| 1 | A10008 | Shoulder pin, 1-5/8" to 1-1/4" with zerk in threaded end |
| 2 | A10162 | Bushing, 2" OD x 1-5/8" ID x 1-1/2" |
| 3 | A123306 | Roller, gate rear with flange type (for models made after Jan 1, 2000; sn 20219 and above) |
| 4 | AFN-00024 | Jam nut, 1-1/4" NF |
| 5 | 14505 | Grease fitting, 1/8" NPT straight |
| 6 | A9056 | Push off gate |
| 7 | A9058 | Dirt shield |
| 8 | AFB-00015 | Bolt, 1/2" NC x 1-1/2" |
| 9 | 8100 | Lockwasher, 1-2" |
| 10 | AFN-00011 | Nut, 1-2" NC |

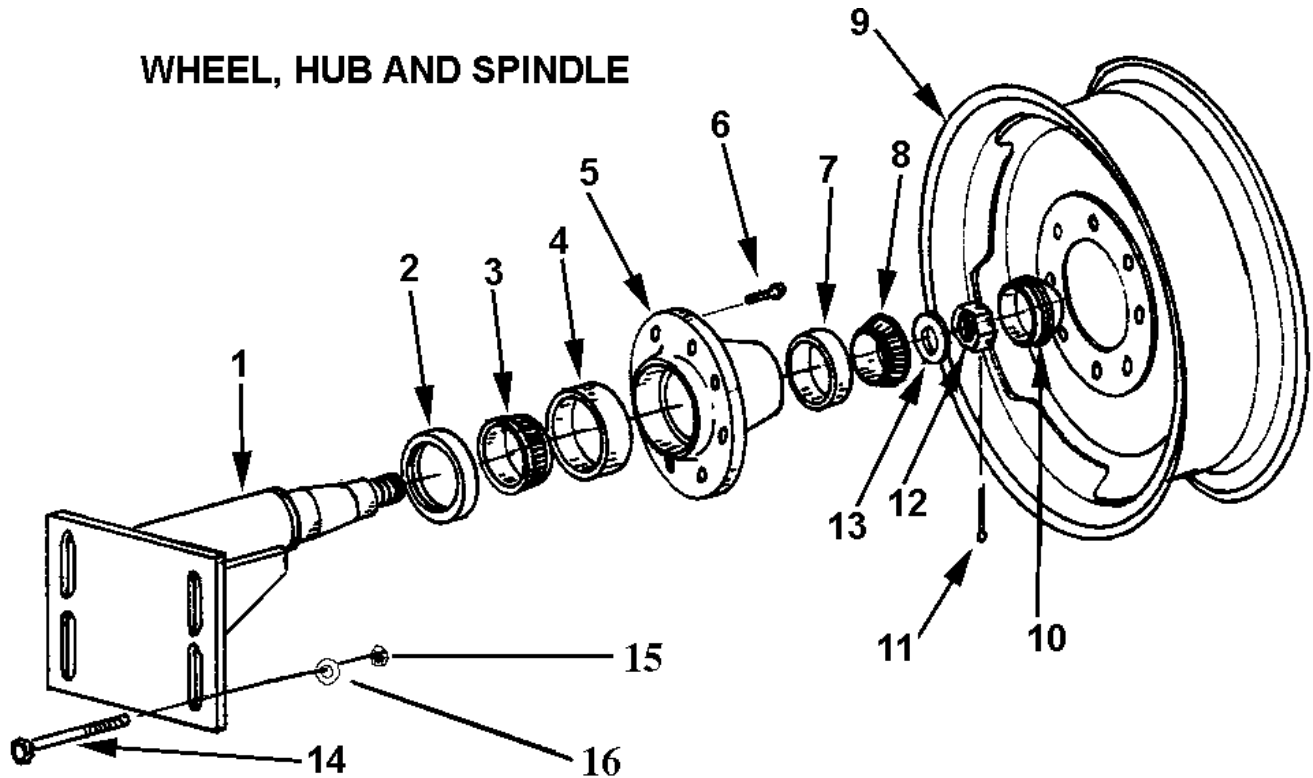
I-900 POLE AND AXLE ASSEMBLY




I-900poleaxle

| KEY NO. | PART NO. | DESCRIPTION |
|----------------|-----------------|--|
| 1 | A10033A | Single lip hitch |
| 2 | 14505 | Grease fitting, 1/8" NPT |
| 3 | A9059 | Pole |
| 4 | AFP-00002 | Cotter Pin, 3/16" x 1-3/4" |
| 5 | AFN-00010 | Nut, castellated, 1-1/4" NF |
| 6 | A8027 | Washer, special, 1-1/4" flat |
| 7 | AFB-00005 | Bolt, 3/4" NC x 2-1/2" long |
| 8 | A40006 | Ball swivel |
| 9 | AFB-00068 | Bolt, 5/16" x 2-1/2" |
| | 7430 | Nut: 5/16" |
| | 8070 | Lockwasher: 5/16" |
| 10 | A10034 | Pin, 1-1/2" x 6-1/4" |
| 11 | A10033 | Clevis hitch, optional |
| 12 | AFW-00002 | Lockwasher, 3/4" |
| 13 | A9062 | Weld, Spindle blank |
| 14 | A082875W | Yoke hitch rebuild kit - includes thrust block, thrust collar, yoke, cross shaft (10,15, 16, 17) |
| 15 | A082875 | Swivel yoke |
| 16 | A123166 | Swivel block |
| 17 | A083075 | Retaining Collar |

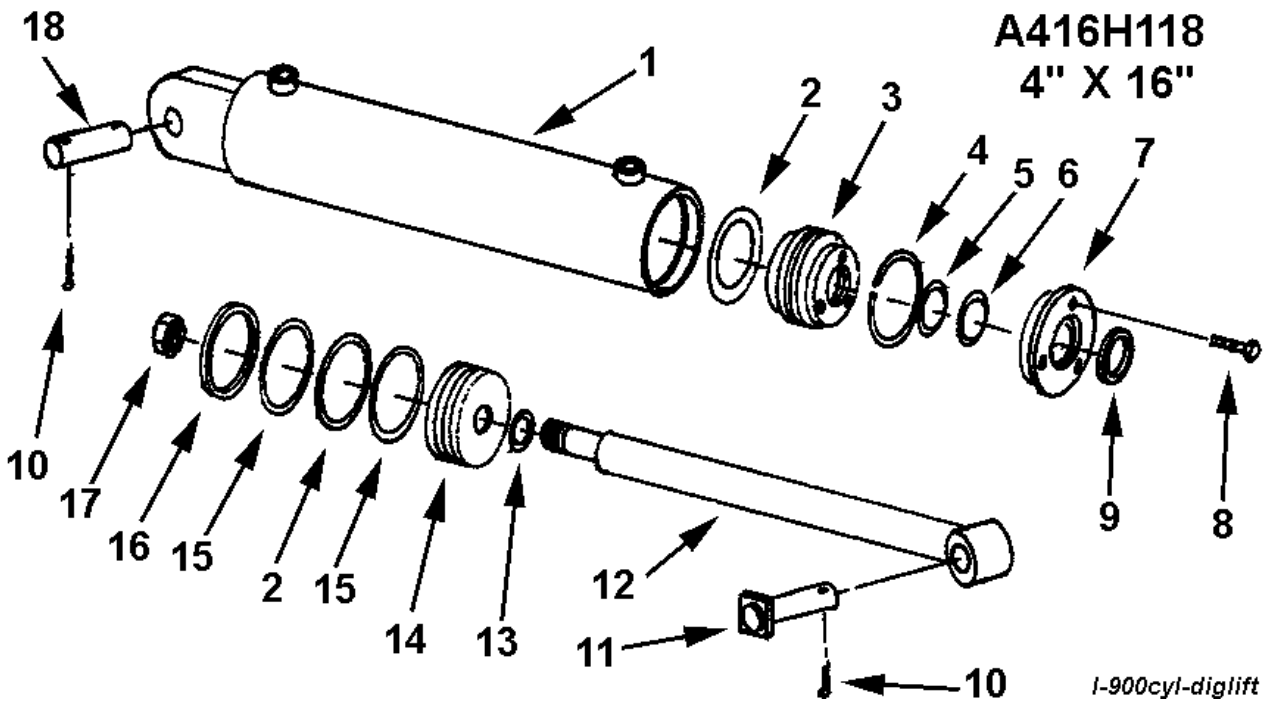
WHEEL, HUB AND SPINDLE



I-900wheel

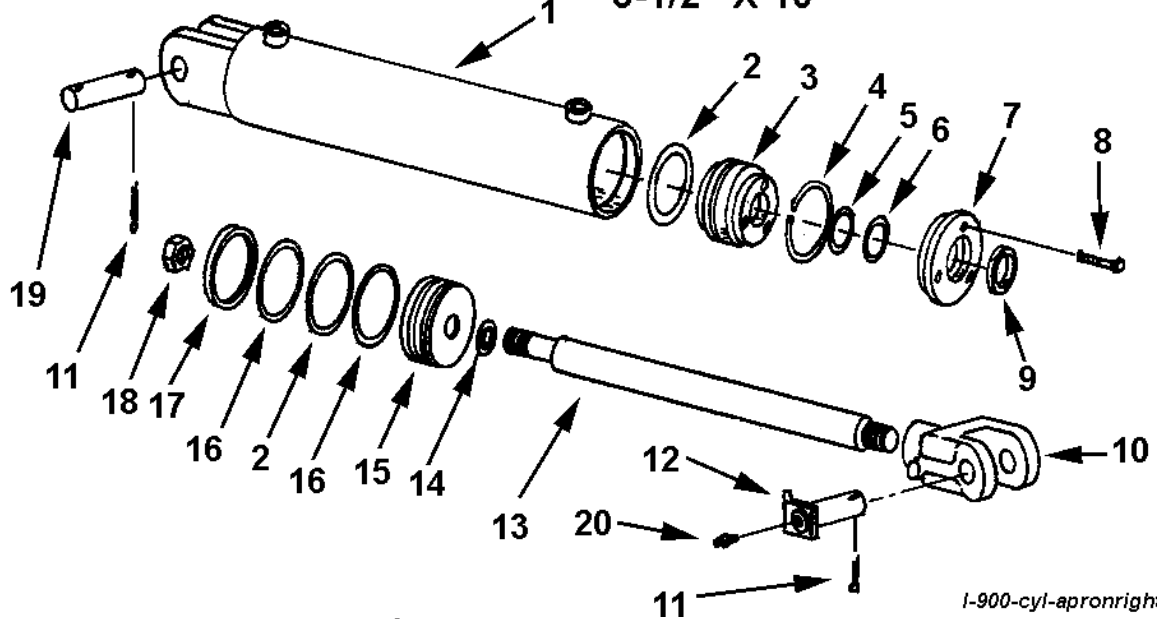
| KEY NO. | PART NO. | DESCRIPTION |
|----------------|--|--|
| 1 | A9060 | Spindle, Rear with flange base plate, s.n. 17908 above |
| 2 | A8020 | Grease seal (CR 35062) |
| 3 | A9061 | Bearing cone, inner s.n. 17908 above (Timken 39585) |
| 4 | A8022 | Bearing cup, inner (Timken 39520) |
| 5 | A8023  | Hub |
| 6 | A4519 | Wheel bolt, 9/16" NF |
| 7 | A8024 | Bearing cup, outer (Timken 3525) |
| 8 | A8025 | Bearing cone, outer (Timken 3585) |
| 9 | A6022A | Wheel, 16.1 x 11" DC, front |
| | A6023 | Large wheel 24" x 15", rear |
| 10 | A8026 | Hub cap |
| 11 | AFP-00002 | Cotter pin, 3/16" x 1-3/4" |
| 12 | AFN-00005 | Spindle nut |
| 13 | A8027 | Spindle washer, special |
| 14 | AFB-00001 | Bolt, 1" NC x 6-1/2" long |
| 15 | AFN-00012 | Nut, 1" NC |
| 16 | AFW-00001 | Flat washer, 1" |

HYDRAULIC CYLINDER DIG AND LIFT CIRCUIT



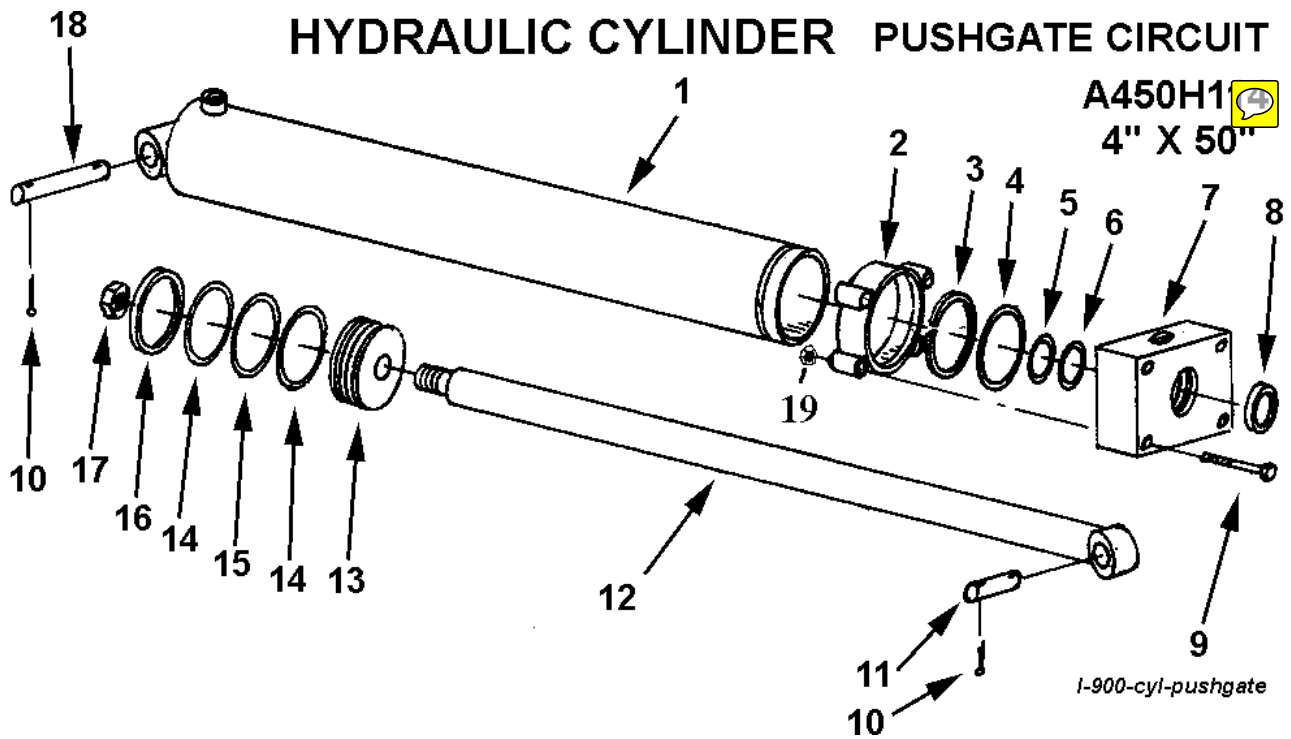
| KEY NO. | PART NO. | DESCRIPTION |
|----------------|-----------------|--|
| 1 | A45H04 | Barrel Assembly |
| 2 | A300H06 | O-ring, 4" OD x 3/16" |
| 3 | A300H11 | Head gland |
| 4 | A300H12 | Retainer ring |
| 5 | A22H15 | O-ring, 1-1/2" ID x 1/8" |
| 6 | A22H15A | Backup washer |
| 7 | A300H13 | Head cap |
| 8 | A22H18 | Capscrew, 1/4" x 1" |
| 9 | A22H17 | Wiper seal, 1-1/2" ID |
| 10 | AFP-00003 | Cotter pin, 3/16" x 1-1/2" |
| 11 | A10168 | Pin, 1-1/8" x 4-1/4" |
| 12 | A45H03 | Shaft, 1-1/2" diameter |
| 13 | A45H05 | Piston gasket, 1" ID |
| 14 | A300H07 | Piston, 4" |
| 15 | A300H05 | Backup washer, 4" OD |
| 16 | A300H04 | Cast iron ring, 4" OD |
| 17 | A300H03 | Piston nut |
| 18 | A45003 | Pin, 1-1/8" x 3-1/4" |
| | A300H14B | Packing kit containing: |
| | | 1 - A300H04 1 - A22H15 2 - A300H05 |
| | | 1 - A22H15A 2 - A300H06 1 - A22H17 |
| | | 1 - A45H05 |

HYDRAULIC CYLINDER A3510H1 3-1/2" X 10" APRON CIRCUIT,



RIGHT SIDE ONLY UP TO S/N 20395
LEFT & RIGHT SIDE FROM S/N 20396 UP

| <u>KEY NO.</u> | <u>PART NO.</u> | <u>DESCRIPTION</u> |
|----------------|-----------------|--|
| 1 | A12H04 | Barrel |
| 2 | A22H08 | O-ring, 3-1/2" OD |
| 3 | A22H13 | Head gland |
| 4 | A22H14 | Retainer ring |
| 5 | A22H15 | O-ring, 1-1/2" ID x 1/8" thickness |
| 6 | A22H15A | Backup washer |
| 7 | A22H16 | Head cap |
| 8 | A22H18 | Socket head capscrew, 1/4 x 1" |
| 9 | A22H17 | Wiper seal, 1-1/2" ID |
| 10 | A12H03 | Clevis end |
| 11 | AFP-00003 | Cotter pin, 3/16" x 1-1/2" |
| 12 | A10167 | Pin, 1" x 3-9/16" |
| 13 | A12H02 | Shaft, 1-1/2" diameter |
| 14 | A22H10 | Piston gasket, 3/4" ID |
| 15 | A22H09 | Piston |
| 16 | A22H07 | Back up washer, 3-1/2" OD |
| 17 | A22H06 | Piston ring, 3-1/2" x 3/16" |
| 18 | A22H05 | Piston nut, 3/4" NF |
| 19 | A1217 | Pin, 1" x 3-1/2" |
| 20 | 14505 | Grease fitting |
| | A22H19B | Packing kit containing: |
| | | 1 - A22H06 2 - A22H07 2 - A22H08 |
| | | 1 - A22H10 1 - A22H14 1 - A22H15 |
| | | 1 - A22H15A 1 - A22H17 |



| KEY NO. | PART NO. | DESCRIPTION |
|----------------|-----------------|--|
| 1 | A90H25 | Barrel Assembly |
| 2 | A80H22 | Clamp ring |
| 3 | A80H23 | Retainer ring |
| 4 | A80H24 | O-ring, 4" OD x 1/8" |
| 5 | A400H12 | O-ring, 2" ID |
| 6 | A400H12A | Backup washer |
| 7 | A80H25 | Head gland |
| 8 | A80H06 | Wiper seal, 2" ID |
| 9 | AFB-00009 | Bolt, 1/2" NF x 4-1/2", Gd. 5, w/ nut |
| 10 | 8602 | Cotter pin, 1/4" x 2" |
| 11 | A8061 | Pin, 1-1/4" x 4-3/4" |
| 12 | A90H26 | Rod assembly |
| 13 | A80H27 | Piston |
| 14 | A300H05 | Backup washer, 4" OD |
| 15 | A300H06 | O-ring, 4" OD x 3/16" |
| 16 | A300H04 | Cast iron ring, 4" OD |
| 17 | A400H17 | Piston nut, 1-1/4" NF |
| 18 | A8062 | Pin, 1-1/4" x 7" |
| 19 | AFN-00011 | Nut, 1-2" NC |
| | A80H30 | Packing kit containing: |
| | | 1 - A80H24 2 - A300H05 1 - A400H12 |
| | | 1 - A300H06 1 - A400H12A 1 - A300H04 |
| | | 1 - A80H06 |

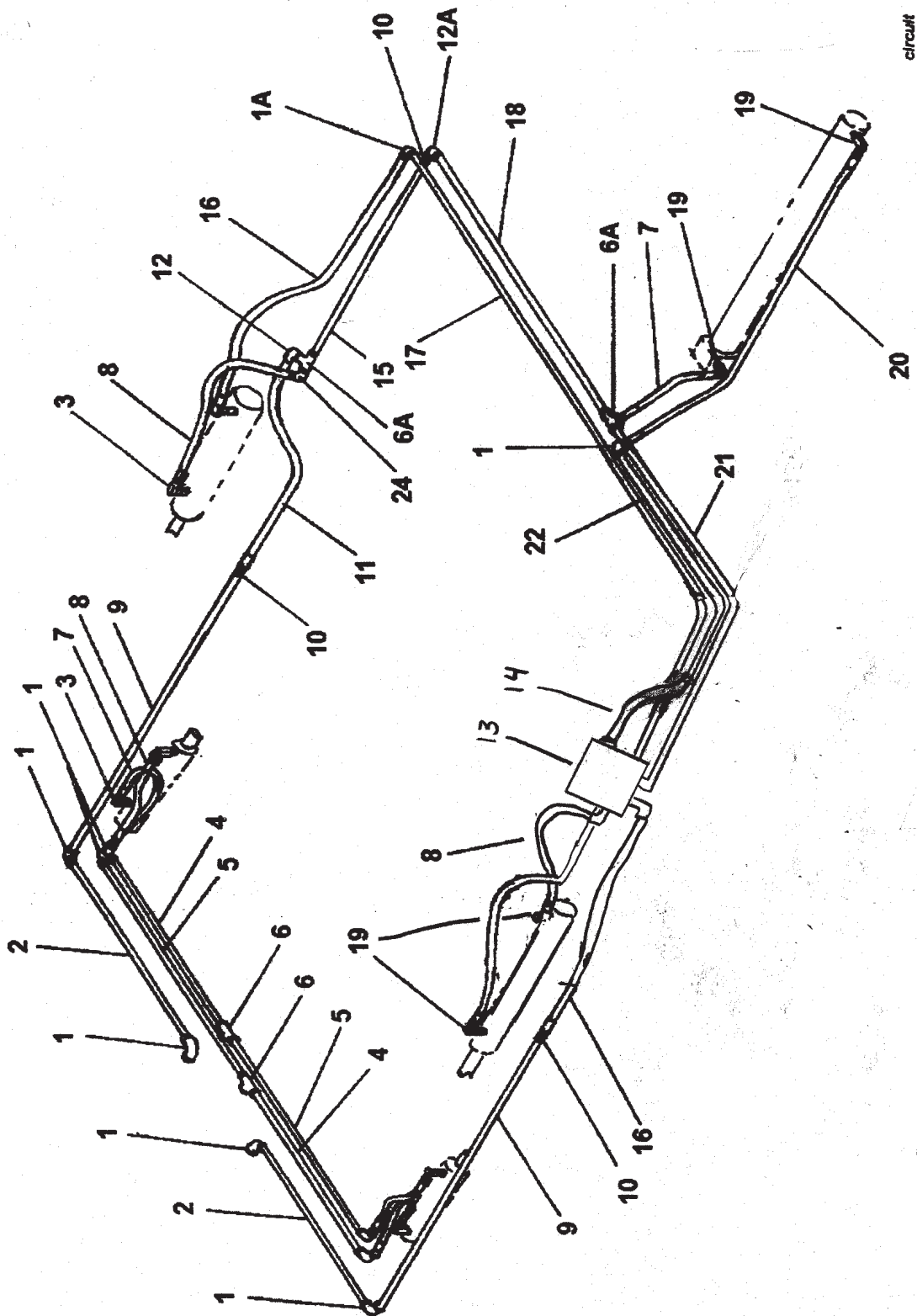
FOR MODELS w/ S.N. 20744 & UP

PARTS LIST

HYDRAULIC CIRCUIT

| <u>KEY NO.</u> | <u>NO. REQ'D</u> | <u>PART NO.</u> | <u>DESCRIPTION</u> |
|----------------|------------------|-----------------|--|
| 1 | 3 | AHA-00024 | Adapter: 90 DEG. 3/4" M JIC X 1/2" F NPT |
| 2 | 2 | A125059 | Hyd. Tubing 3/4" X 102" w/- 12JIC NUTS & SLEEVES |
| 3 | 8 | A45H07 | Adapter: 90 DEG. 3/8" M NPT. X 1/2" F NPT |
| 4 | 2 | A125064 | Hyd. Tubing 3/4" X 30-1/2" w/- 12JIC nuts & sleeves |
| 5 | 2 | A125063 | Hyd. Tubing 3/4" X 32 3/4" w/- 12JIC nuts & sleeves |
| 6 | 3 | AHA-00015 | Adapter: T 3/4" M JIC, 3/4" M NPT, 3/4" M JIC |
| 7 | 6 | | Hose, 1/2" X 18" |
| 8 | 4 | | Hose, 1/2" X 24" |
| 9 | 4 | | Hose, 1/2" X 138" |
| 10 | 1 | AHA-000343 | Adapter: STR. SWIV. 1-1/16 M ORB X 1/2" F NPT |
| 11 | 1 | | Hose, 1/2" X 40" |
| 12 | 2 | AHA-00048 | Adapter: 90 SWIV. -12 M ORB X 1/2 F NPT |
| 13 | 1 | A125055 | Manifold Block Assembly |
| 14 | 1 | | Hose, 3/4" X 20" |
| 15 | 1 | AHA-00047 | Adapter: 90 XL 3/4 M JIC X -12 M ORB |
| 16 | 1 | | Hose, 1/2" X 46" |
| 17 | 1 | A125058 | Hyd. Tubing 3/4" X 140 1/2" w/-12 JIC nuts & sleeves |
| 18 | 1 | A1250660 | Hyd. Tubing 3/4" X 77-3/4" w/-12 jic nuts & sleeves |
| 19 | 2 | A400H02-S | Adapter: 90 DEG. SWIV. 1/2 M NPT X 1/2 F MPT |
| 20 | 1 | | Hose, 1/2" x 55" |
| 21 | 1 | A125601 | Hyd. Tubing 3/4" X 68-1/2" w/-12 jic nuts & sleeves |
| 22 | 1 | A125062 | Hyd. Tubing 3/4" X 36-1/4" w/-12 jic nuts & sleeves |
| 23 | 1 | AHA-00019 | Adapter: 90 DEG. 3/4 M JIC X 3/4 M JIC |
| 24 | 1 | AHA-00010 | Adapter: 90 DEG. 3/4 M NPT X 3/4 F NPT |
| 25 | 1 | AHA-00014 | Adapter: T 1/2 F NPT X 1/2 F NPT X 1/2 F NPT |
| 26 | 1 | AHA-00040 | Adapter: 45 DEG. SWIV. 3/4 F NPT X 3/4 F NPT |
| 27 | 1 | AHV-00001 | Pressure Relief Valve |
| 28 | 1 | A155-H21 | Hyd. Tubing 3/4" X 5" 2/-12 JIC Nuts & Sleeves |

FOR MODELS SN 20744 AND UP
HYDRAULIC CIRCUIT



circuit

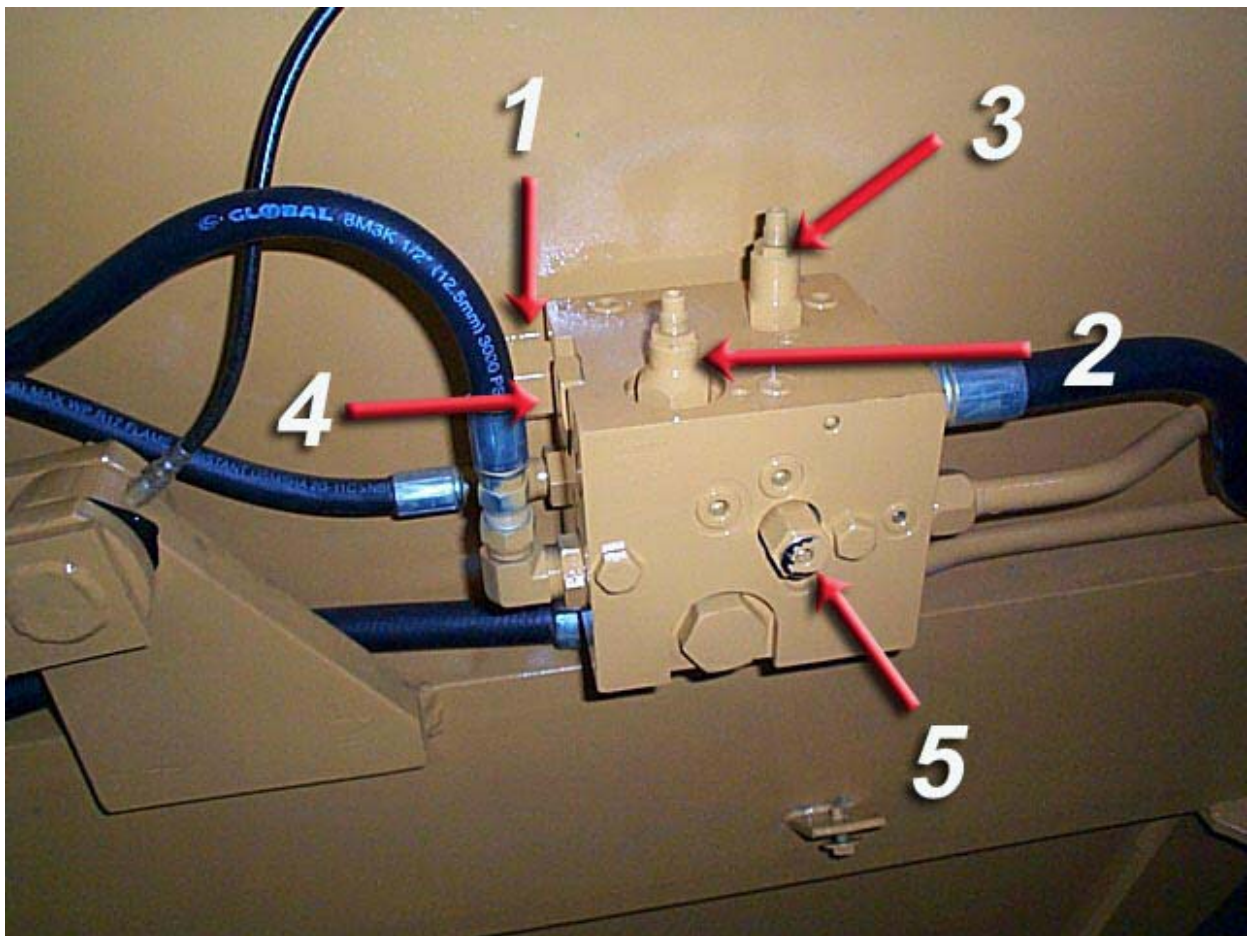
IMPORTANT

This Hyd. Manifold was intergrated into production Nov. 2003 It replaces t A125055 valve which was used S.N. 20750 to 20853 To confirm what valve you have confirm with earlier valve I.D. page

HYDRAULIC MANIFOLD ASSEMBLY

~~A125070~~

S.N. 20853 & above



~~A125070~~ HYDRAULIC MANIFOLD

| ITEM # | PART NO. | DESCRIPTION |
|--------------|------------|---------------------------------------|
| 1 | A125070-01 | DIRECTIONAL CONTROL VALVE |
| 2 | A125070-02 | APRON SEQUENCE CARTRIDGE |
| 3 | A125070-03 | PUSHOFF SEQUENCE CARTRIDGE |
| 4 | A125070-04 | CHECK VALVE CARTRIDGE |
| 5 | A125070-05 | UNLOAD CARTRIDGE |

SETTING THE APRON AND PUSHOFF VALVE

The manifold block containing the pushoff sequence valve cartridge and apron sequence valve cartridge is used to control two hydraulic circuits with one hydraulic remote. When the tractor hydraulic remote is activated, oil flows first to the apron cylinders until they are fully extended. Once the cylinders are fully extended, the apron circuits' hydraulic pressure begins to increase. Once the pressure threshold is surpassed (which is adjustable. See adjustment section), the sequence valve diverts the oil flow to the pushoff's hydraulic circuit. Once the push off is completely extended the operator then reverses the tractor's hydraulic remote. The counterbalance valve will hold the apron open until the push off is fully retracted. The Apron sequence valve then opens and allows the apron to close.

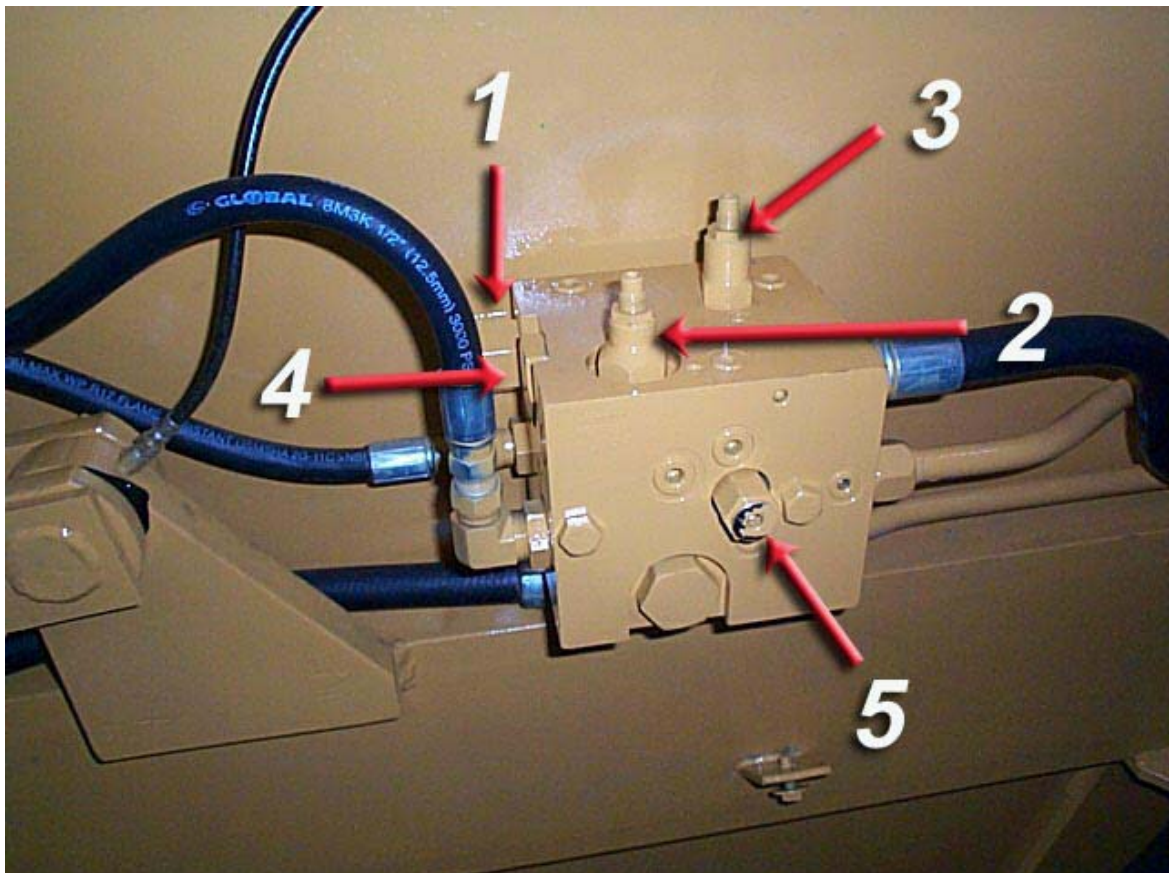
Setting the valves

STEP 1 PUSHOFF SEQUENCE VALVE

Loosen the lock nut (3/4") on the sequence valve cartridge. Turn the setscrew (1/4") clockwise until the front apron rises before the push-off begins to advance. (Earthmover should be empty) Turn the adjustment screw an additional 1/4 turn clockwise and tighten jam nut.

STEP 2 APRON SEQUENCE VALVE

Loosen the lock nut (3/4") on the counterbalance valve cartridge. Turn the setscrew (1/4") clockwise until the apron holds in a raised position while rear gate is being retracted. Turn adjustment screw an additional 1/4 turn, tighten jam nut. DO NOT tighten adjusting screw more than necessary.



Limited Warranty Statement

Ashland Industries Inc. warrants each new product to be free from defects in material and workmanship. This warranty is applicable only for the normal service life expectancy of the product or components, not to exceed **six consecutive months** from the date of delivery of the new Ashland Industries product to the purchaser, or the date the product is first put into service via a rental agreement or other means, whichever occurs first.

The major components of swivel hitches used on Industrial series scrapers are warranted for three consecutive months from the date of delivery of the new Ashland Industries product to the purchaser, or the date the product is first put into service via a rental agreement or other means, whichever occurs first, except those components described below.

Genuine Ashland Industries Inc. replacement parts and components will be warranted for 30 days from date of purchase, or the remainder of the original equipment warranty period, whichever is longer.

Under no circumstances will it cover any merchandise or components thereof, which in the opinion of the company, has been subjected to misuse, unauthorized modification, alterations, an accident or if repairs have been made with parts other than those obtained through Ashland Industries Inc.

Ashland Industries Inc. in no way warrants Tires since their respective manufacturer warrants these items separately. Please call Ashland Industries Inc. to receive phone numbers of tire suppliers.

Ashland Industries Inc. in no way warrants wearable items such as cutting edges, front dolly wheel balls, socket halves, rollers, bushings, yoke hitch pins, hitch bushings, etc..

Our obligation under this warranty shall be limited to repairing or replacing, free of charge to the original purchaser, any part that, in our judgement, shall show evidence of such defect, provided further that such part shall be returned within 30 days from the date of failure to Ashland Industries Inc. routed through the dealer and distributor from whom the purchase was made, transportation charges prepaid. Upon warranty approval proper credits will be reimbursed for transportation.

This warranty shall not be interpreted to render Ashland Industries Inc. liable for injury or damages of any kind or nature to person or property. This warranty does not extend to the loss revenue, extra labor cost associated with downtime, substitute machinery, rental or for any other reason.

Except as set forth above, Ashland Industries Inc. shall have no obligation or liability of any kind on account of any of its equipment and shall not be liable for special or consequential damages. Ashland Industries Inc. make no other warranty, expressed or implied, and, specifically, Ashland Industries Inc. disclaims any implied warrant or merchantability or fitness for a particular purpose. Some states or provinces do not permit limitations or exclusions of implied warranties or incidental or consequential damages, so the limitations or exclusion in this warranty may not apply.

This warranty is subject to any existing conditions of supply which may direct affect our ability to obtain materials or manufacture replacement parts.

Ashland Industries Inc. reserves the right to make improvements in design or changes in specifications at any time, without incurring any obligation to owners of units previously sold

No one is authorized to alter, Modify or enlarge this warranty nor the exclusion, limitations and reservations.

Ashland Industries Inc.
Warranty Department