

Ashland

EARTHMOVERS



I-175XL2

PARTS MANUAL

I-175XL2 ver 5-06



175XL2-ill

Ashland Industries Inc.
1115 Rail Drive
P.O. Box 717
Ashland, WI. 54806
Ph: 877-634-4622 Toll Free
Ph: 715-682-4622
Fx: 715-682-9717
www.ashlandind.com

MEMBER



CONSTRUCTION INDUSTRY
MANUFACTURERS ASSOCIATION



Ashland EARTHMOVERS

HOW TO ORDER PARTS:

IMPORTANT

Parts must be ordered through your local authorized ASHLAND dealer.

Be sure to state MODEL and SERIAL NUMBER of your machine, PART NUMBER, DESCRIPTION and QUANTITY needed.

Unless this is done, we cannot provide prompt service or assure shipment of the correct parts.



Ashland Industries weldable replacement parts are available to rebuild, modify or update your scraper to current factory specifications.

INDEX

Page 3.	Operators and Maintenance Instructions
Page 4.	Safety Guidelines
Page 5.	Illustration - Assembly
Page 6.	Illustration and Parts List - Gooseneck Frame Assembly
Page 7.	Illustration and Parts List - Apron Assembly
Page 8-9.	Illustration and Parts List - Bowl and Frame Assembly
Page 10.	Illustration and Parts List - Push Off Gate Assembly
Page 11.	Illustration and Parts List - Pole and Axle Assembly
Page 12.	Illustration and Parts List - Front Wheel and Hub Assembly
Page 13.	Illustration and Parts List - Front Wheel and Hub Assembly, Optl.
Page 14.	Illustration and Parts List - Rear Wheel and Hub Assembly, Std.
Page 15.	Illustration and Parts List - Rear Wheel and Hub Assembly, Optl.
Page 16.	Illustration and Parts List - Apron Cylinder, 4" x 13" sn 20750+
Page 17.	Illustration and Parts List - Apron Cylinder, 4" x 13"
Page 18.	Illustration and Parts List - Hydraulic Cylinder, 5" x 20"
Page 19-20.	Illustration and Parts List - Hydraulic Cylinder, 4-1/2" x 60"
Page 21.	Illustration and Parts List - Push Gate Cylinder Assembly, 4" x 60"
Page 22-27.	Identification, Illustration, Parts List and Adjustment - Hydraulic Valve
Page 28-30.	Service Manual Appendix
Page 31.	Troubleshooting
Page 32.	Warranty Statement

OPERATORS AND MAINTENANCE INSTRUCTIONS

This scraper is a durable piece of equipment and with proper care will yield many years of trouble free operation. The scraper requires a power source with TWO 4 way (double acting) hydraulic control valves.

The scraper should be greased at all points where grease fittings are provided. Connect hydraulic hoses to the tractor and retract lift cylinders to **REMOVE TRANSPORT LOCK PINS** (point A), then extend and retract all cylinders several times to force out any air from the hydraulic cylinders and lines. Check the oil levels in the tractor hydraulic system and add to maintain the proper level. Care should be used when adding oil or when disconnecting any oil line to keep all dirt out of the oil as dirt is a major factor in the failure of hydraulic components.

When the scraper is placed into operation, the operator will have to "feel out" the amount of depth of cut to obtain maximum loading efficiency. This is usually accomplished by taking a lesser and more uniform cut; however, some soil conditions such as loose sand may require a "pumping action" obtained by taking successive deep cuts and lifting out of cut as the tractor begins to lose power or traction.

1. After 10 hours work, all bolts should be checked and tightened if necessary.
2. Every 10 hours all grease fittings should be lubricated.
3. After 50 hours work, all bolts should be rechecked and tightened if necessary. Check wheel bearings and adjust if necessary.
4. After 300 hours work, clean and repack wheel bearings and replace, if necessary, cutting edges, worn pins, etc.



SAFETY SIGNAL WORDS

Note the use of the signal words DANGER, WARNING and CAUTION with the safety messages. The appropriate signal word for each has been selected using the following guidelines:



DANGER: Indicates an imminently hazardous situation that, if not avoided, will result in death or serious injury. This signal word is to be limited to the most extreme situations typically for machine components which, for functional purposes, cannot be guarded.



WARNING: Indicates a potentially hazardous situation that, if not avoided, could result in death or serious injury, and includes hazards that are exposed when guards are removed. It may also be used to alert against unsafe practices.



CAUTION: Indicates a potentially hazardous situation that, if not avoided, may result in minor or moderate injury. It may also be used to alert against unsafe practices.



GENERAL SAFETY GUIDELINES

Safety of the operator is one of the main concerns in designing and developing a new piece of equipment. Designers and manufacturers build in as many safety features as possible. However, every year many accidents occur which could have been avoided by a few seconds of thought and a more careful approach to handling equipment. You, the operator, can avoid many accidents by observing the following precautions in this section. To avoid personal injury, study the following precautions and insist those working with you, or for you, follow them.

Replace any CAUTION, WARNING, DANGER or instruction safety decal that is not readable or is missing. Location of such decals is indicated in this booklet.

Do not attempt to operate this equipment under the influence of drugs or alcohol.

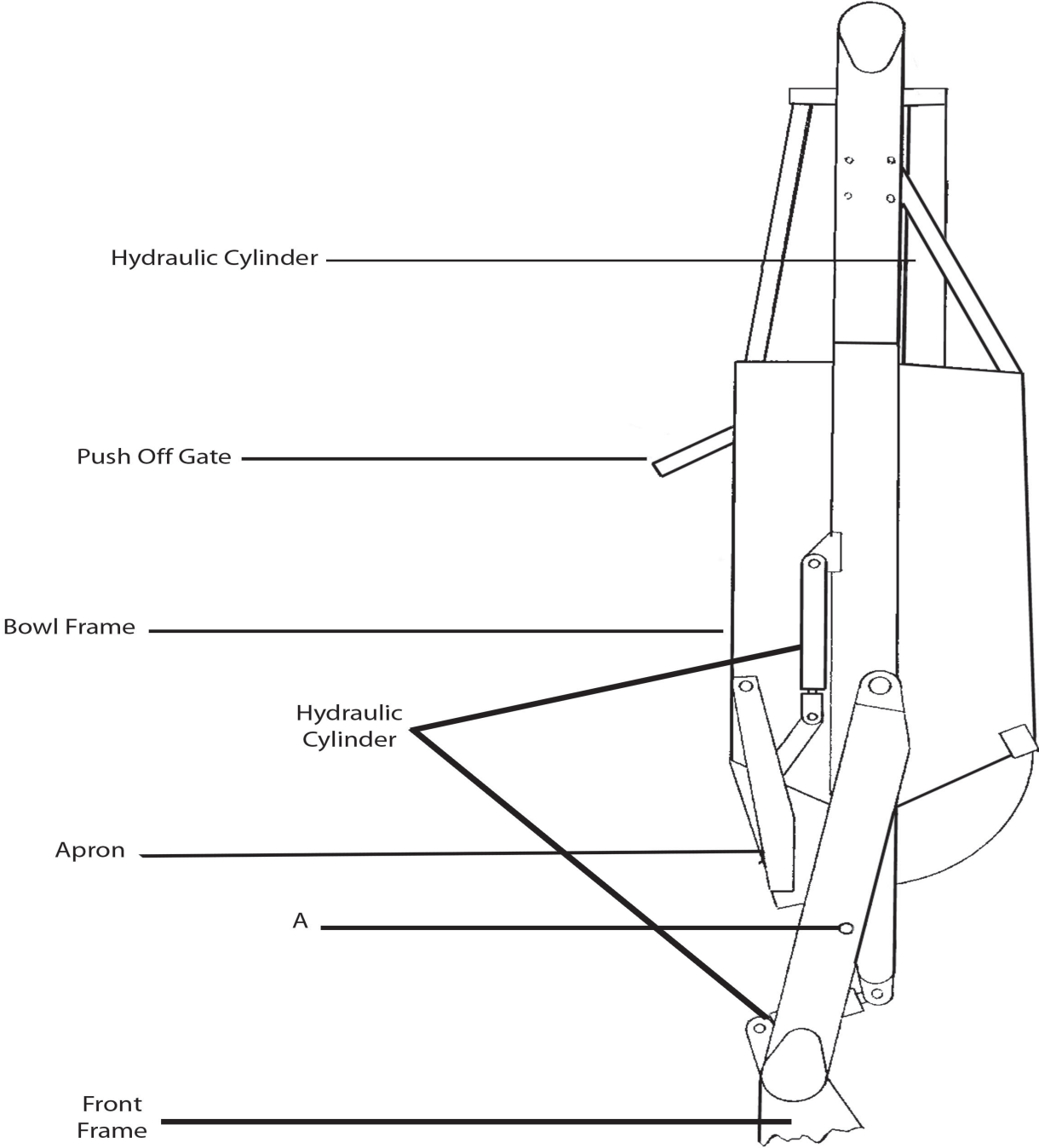
Review the safety instructions with all users annually.

This equipment is dangerous to children and persons unfamiliar with its operation. The operator should be a responsible adult familiar with farm machinery and trained in this equipment's operations. **Do not allow persons to operate or assemble this unit until they have read this manual and have developed a thorough understanding of the safety precautions and of how it works.**

To prevent injury or death, use a tractor equipped with a Roll Over Protective System (ROPS). Do not paint over, remove or deface any safety signs or warning decals on your equipment. Observe all safety signs and practice the instructions on them.

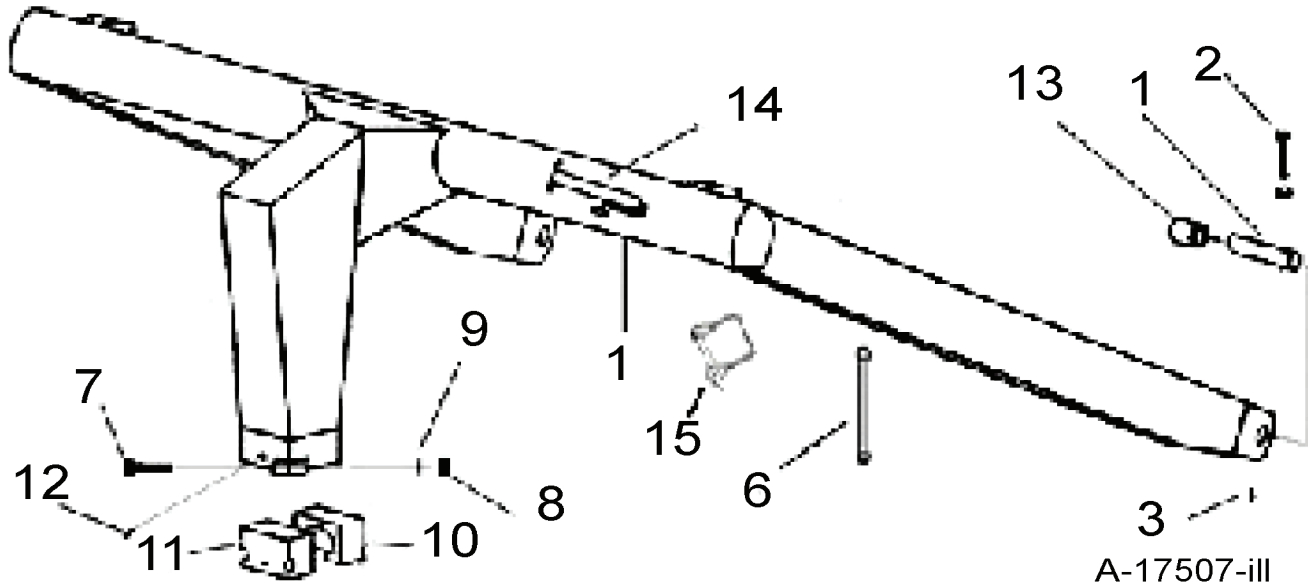
Never exceed the limits of a piece of machinery. If its ability to do a job, or to do so safely, is in question - **DON'T TRY IT.**

ILLUSTRATION * ASSEMBLY



I-Series Assembly-ILL

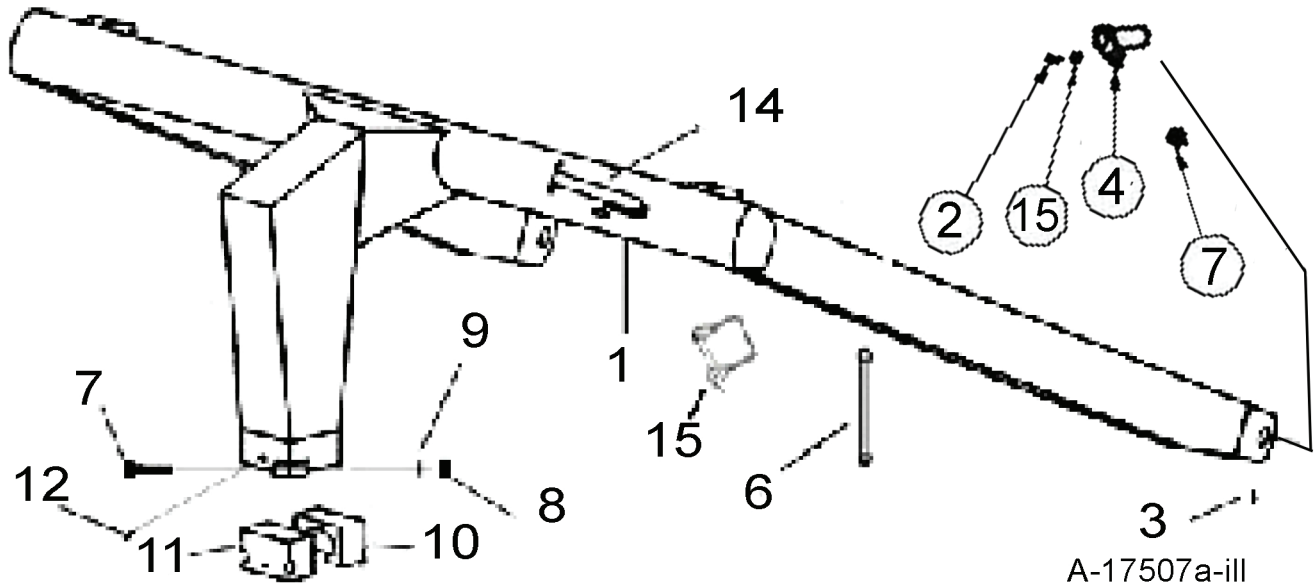
**GOOSENECK FRAME ASSEMBLY
Up to S/N 21763**



**PARTS LIST
GOOSENECK FRAME ASSEMBLY
MODEL I-175 XL2**

KEY NO.	PART NO.	DESCRIPTION
1.	A17507	Gooseneck Frame
2.	AFB-00054	Bolt, 1/2" NC x 3-1/2" Lg.
3.	14505	Grease Zerk - Straight
4.	A10152A	Pin, Frame Attach
6.	A123230-20	Travel Lock
7.	AFB-00022	Bolt, 7/8"NF x 4-1/2" Lg. Grade 5
8.	7597	Nut, 7/8"NF
9.	8125	Lockwasher 7/8"
10.	A14002	Cast Socket Half - Rear
11.	A14003	Cast Socket Half - Front w/Zerk Hole
12.	A2206	Grease Zerk - Long Shank
13.	A14039	Bushing, 2-3/8" OD x 2" ID x 2" Long
14.	OPT-00001	Hitch Jack
15.	A125006	Safety Link Pin

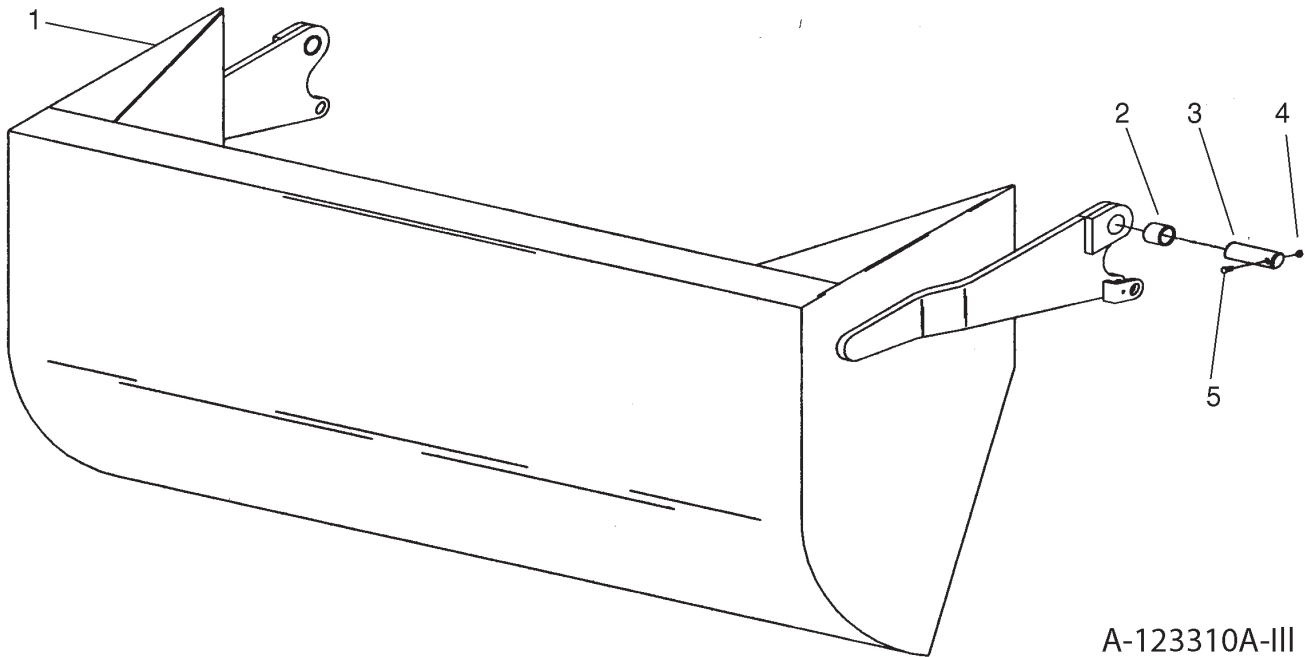
GOOSENECK FRAME ASSEMBLY
S/N 21763 and above



PARTS LIST
GOOSENECK FRAME ASSEMBLY
 MODEL I-175 XL2

KEY NO.	PART NO.	DESCRIPTION
1.	A17507	Gooseneck Frame
2.	AFB-00079	Bolt, 5/8" NC x 1-1/2" Lg.
3.	14505	Grease Zerk - Straight
4.	A123321-09	Main Frame Pin
6.	A123230-20	Travel Lock
7.	AFB-00022	Bolt, 7/8"NF x 4-1/2" Lg. Grade 5
8.	7597	Nut, 7/8"NF
9.	8125	Lockwasher 7/8"
10.	A14002	Cast Socket Half - Rear
11.	A14003	Cast Socket Half - Front w/Zerk Hole
12.	A2206	Grease Zerk - Long Shank
13.	A123320-8	3" ID x 31/4 " OD x 3" Long Bronze
14.	OPT-00001	Hitch Jack
15.	A123358	Flanged Bolt Bushing

APRON ASSEMBLY

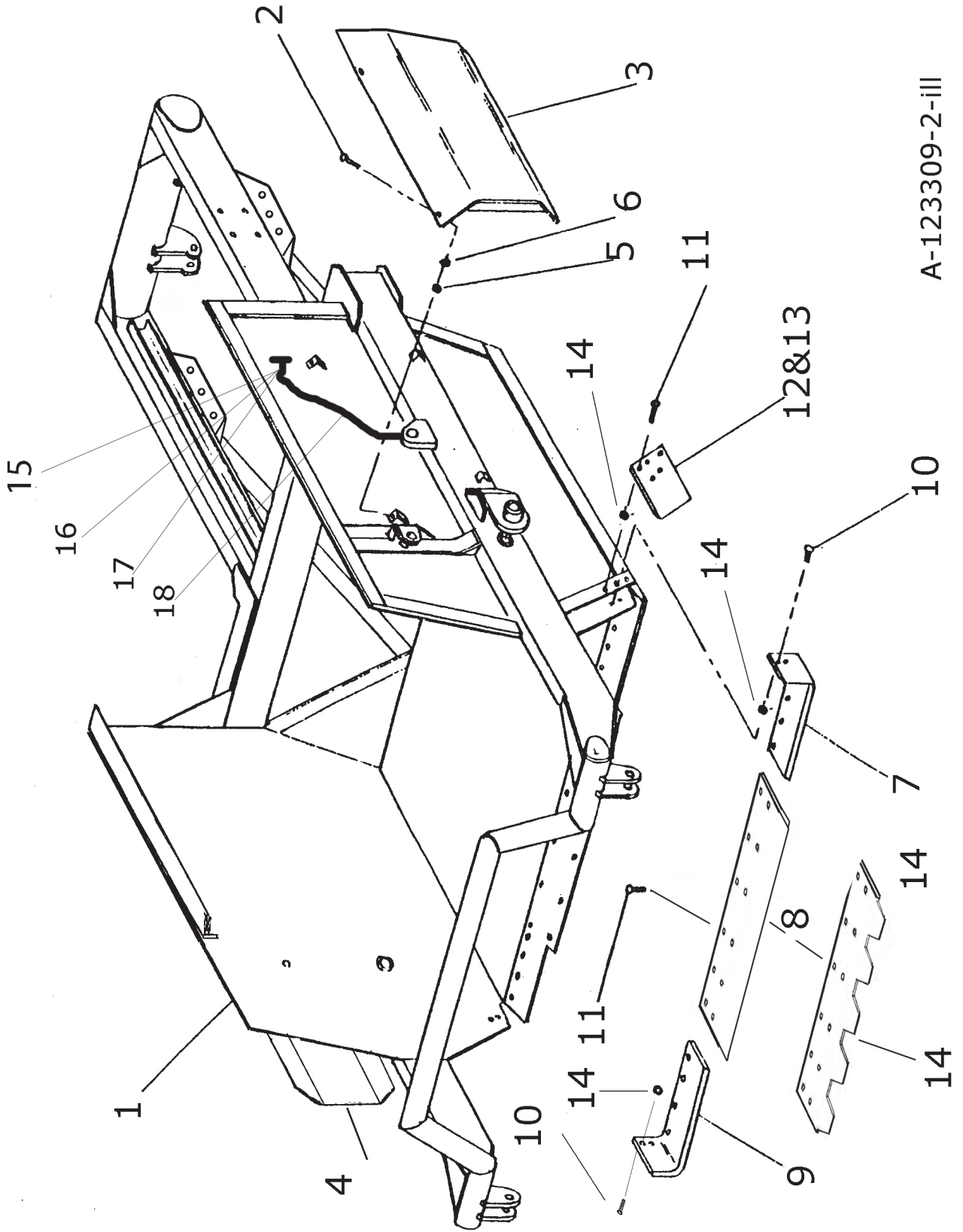


A-123310A-III

PARTS LIST APRON ASSEMBLY MODEL I-175 XL2

KEY NO.	PART NO.	DESCRIPTION
1.	A123228	Apron Model I-175XL (sn.20763 and up)
	A17505C	Apron Model I-175XL (sn below 20763)
2.	A16027	Bushing: 2" OD x 1-1/2" ID x 2" Long
3.	A123337	Pin: 1-1/2" x 5-3/8"
4.	7450	Nut: 3/8" NC
5.	AFB-00049	Bolt: 3/8" NC x 3"

BOWL and FRAME ASSEMBLY



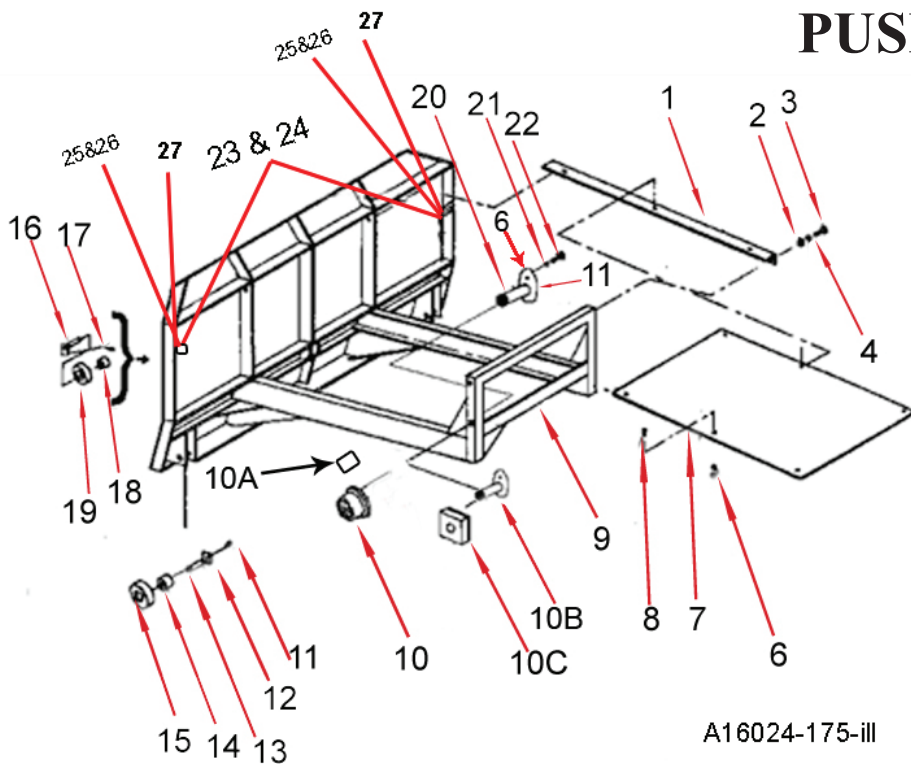
A-123309-2-III

PARTS LIST
BOWL and FRAME ASSEMBLY
MODEL I-175XL2 SCRAPER

<u>KEY NO.</u>	<u>PART NO.</u>	<u>DESCRIPTION</u>
1.	A17503	Bowl and Frame, Model I-175XL2 w/Std. Tires (Consult factory if equipped w/ 29.5 x 25 tire option)
2.	AFB-00094	Bolt: 3/8 NC X 1" Flange Bolt
3.	A10157 A123309-77 A123309-62L "	Cylinder Guard - Left Hand (to S/N 20495) " (from S/N 20496 to S/N 20749) (S/N 20750 and above)
4.	A10158 A123309-62R "	Cylinder Guard - Right Hand (to S/N 20749) (S/N 20750 and above)
7.	A123332L	Left Cutting Edge
8.	A123330SER A123330	Center Cutting Edge, Serrated 1-1/8" x 12" x 63" Center Cutting Edge, Straight 1-1/8" x 12" x 63"
9.	A123332R	Right Cutting Edge
10.	PB9P-NC-088-0275	Plow Bolt: 7/8 NC X 2-3/4" -> 6 Required
11.	AFB-0018	Bolt, 1" NC x 3" long, (5 per Blade Required)
12.	A123357	Bank Shaver/router bit Reversible, L & R
13.	AFN-00012	Nut: 1" NC (5 per Blade Required)
14.	AFN-00019	Nut: 7/8" NC -> 6 Required
15.	A125019	Grease fitting 1/4-28 x .54" long (1 per side)
16.	A125026	Bulkhead nut 1/8 n.p.s.m. (1 per side)
17.	A123309-89	Single hole tab (1 per side)
18.	A125022	18" Grease line (1 per side)

PUSHOFF ASSEMBLY

Up to S.N. 21437

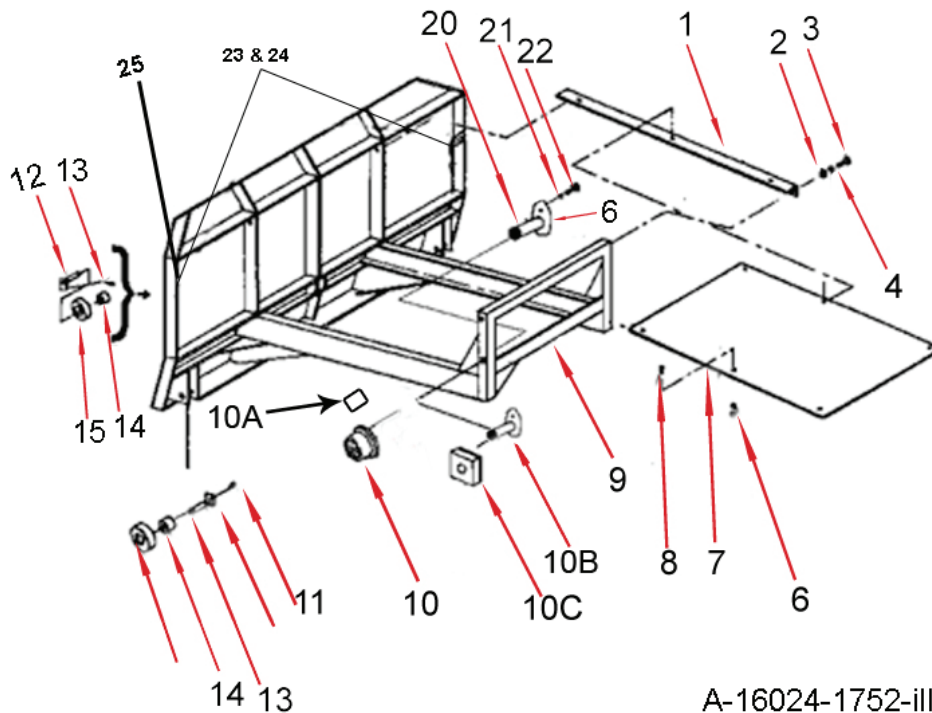


A16024-175-III

KEY NUMBER	PART NUMBER	DESCRIPTION
1.	A14022	Brace
2.	AFN-00006	Nut: 3/4" NC
3.	AFB-00037	Bolt: 3/4" NC x 2" Lg.
4.	AFW-00002	Lockwasher: 3/4"
5.	8100	Lockwasher: 1/2"
6.	AFN-00015	Nut 1/2" NC
7.	A14023	Dirt Shield
8.	AFB-00019	Bolt: 1/2" x 1-1/2" NC bolt
9.	A17502	Pushoff Gate: Model I-175
10.	A123306	Roller: Rear Gate (OPT'L)
10A.	A123307	Bushing
10B.	A123305A	Pin: 1-1/4" x 2-3/4"
10C.	A123353	Wear Pad
11.	AHF-00028	Grease Fitting: 1/8" NPT -90 degrees
12.	A6007A	Pin: 1-1/4" x 4-1/8" Lg.
13.	AFP-00001	Cotter Pin: 1/4 x 3
14.	A10163	Bushing: 1-3/4" OD x 1-1/4" ID
15.	A10164	Roller 3-1/2 OD x 1-3/4 ID
16.	A123288	Pin: 1-1/4" x 3-1/4" Tab Head
17.	7036	Bolt: 1/2 NC x 2"
18.	A10163	Bushing: 1-3/4" OD x 1-1/4" ID
19.	A10164	Roller 3-1/2 OD x 1-3/4 ID
20.	A123305	Pin: 1-1/4 x 2-3/4" w/grease roller
21.	8100	Lockwasher: 1/2"
22.	AFB-00033	Bolt: 1/2 NC x 2-1/2"
23.	A125020	32" grease line
24.	A125021	54" greaseline
25.	A125019	Grease Fitting 1/4 x 28.54 Long
26.	A125026	Bulkhead Nut
27.	A123323-40	Double Hole Tab

PUSHOFF ASSEMBLY

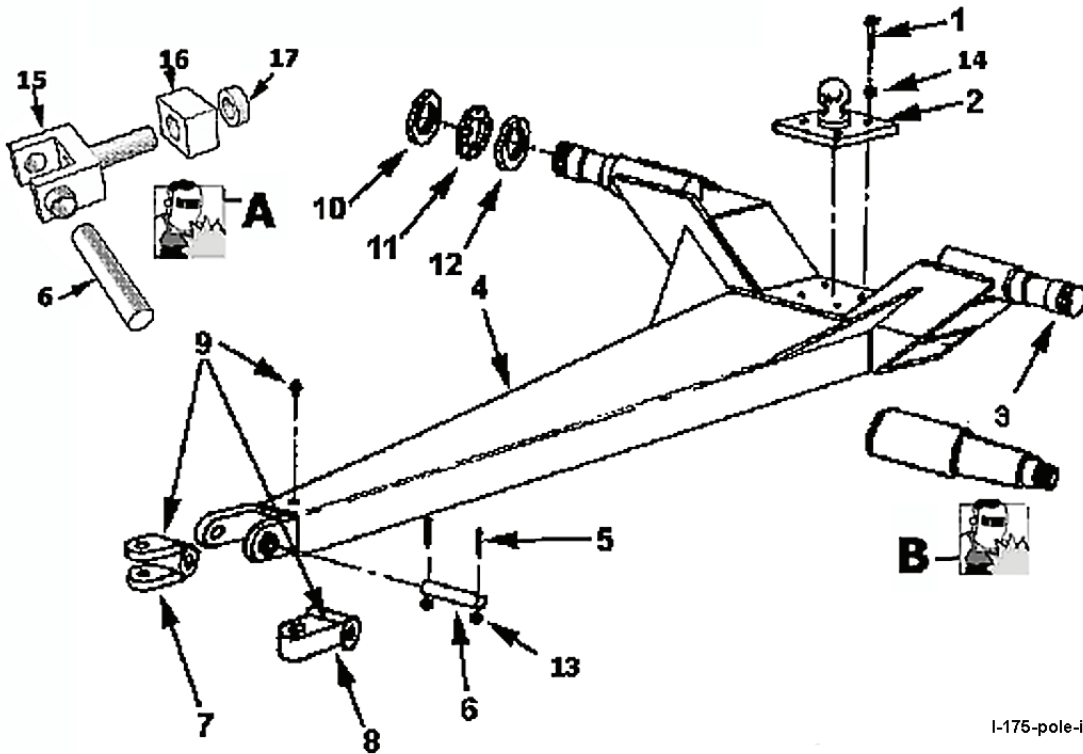
S.N. 21437 and above



A-16024-1752-iii

KEY NUMBER	PART NUMBER	DESCRIPTION
1.	A14022	Brace
2.	AFN-00006	Nut: 3/4" NC
3.	AFB-00037	Bolt: 3/4" NC x 2" Lg.
4.	AFW-00002	Lockwasher: 3/4"
5.	8100	Lockwasher: 1/2"
6.	AFN-00015	Nut 1/2" NC
7.	A14023	Dirt Shield
8.	AFB-00015	Bolt: 1/2" x 1-1/2" NC bolt
9.	A17502	Pushoff Gate: Model I-175
10.	A123306	Roller: Rear Gate (OPT'L)
10A.	A123307	Bushing
10B.	A123305A	Pin: 1-1/4" x 2-3/4"
10C.	A123353	Wear Pad
11.	AHF-00028	Grease Fitting: 1/8" NPT -90 degrees
12.	A6007A	Pin: 1-1/4" x 4-1/8" Lg.
13.	AFP-00001	Cotter Pin: 1/4 x 3
14.	A10163	Bushing: 1-3/4" OD x 1-1/4" ID
15.	A123459	V-Roller 3-1/2 OD x 1-3/4 ID
16.	A12323-21	Pin: 1-1/4" x 4-1/8" Tab Head
17.	A10163	Bushing: 1-3/4" OD x 1-1/4" ID
18.	A10164	Roller 3-1/2 OD x 1-3/4 ID
19.	A123305	Pin: 1-1/4 x 2-3/4" w/grease roller
20.	8100	Lockwasher: 1/2"
21.	AFB-00033	Bolt: 1/2 NC x 2-1/2"
22.	A125020	32" grease line
23.	A125021	54" greaseline
24.	A123323-40	Double Hole Tab
25.	A125026	Bulkhead Nut
26.	A125019	Grease Fitting 1/4 x 28.54 Long

POLE and AXLE ASSEMBLY

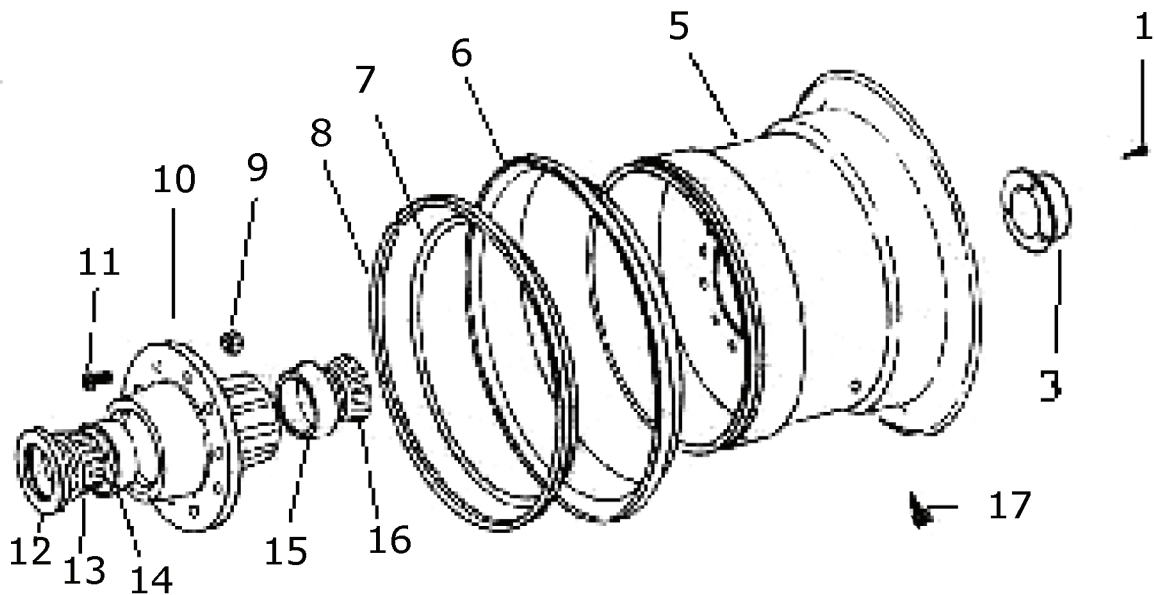


I-175-pole-III

PARTS LIST POLE and AXLE ASSEMBLY MODEL I-175XL2

KEY NO.	PART NO.	DESCRIPTION
1.	AFB-00018	Bolt 1" NC x 3" Long
2.	A14017	Ball Swivel
3.	A14021	Spindle, Weld on Blank
4.	A123375	Pole w/20.5 x 25 Tires (opt'l)
	A123422	Pole w/23.5 x 25 Tires (opt'l)
5.	AFB-00052	Bolt, 5/16" x 3" Long
6.	A14019	Pin 1-3/4" x 7-3/8" Long (Up to July 2003)
	A123232-07	Pin 1-3/4" x 9" Long (After July 2003)
7.	A17511	Swivel Hitch, Double Lip (opt'l)
8.	A17510	Swivel Hitch Single Lip
9.	14505	Grease Fitting
10.	A10048	Spindle Nut
11.	A10049A	Lock Collar
12.	A10172	Nut with Lock Pin
13.	7430	Nut, 5/16" NC
14.	AFW-00006	Lockwasher 1"
	A123232	Swivel Hitch Rebuild Kit, includes items 6,15,16,17
15.	A123232-3	Hitch: Yoke assembly
16.	A123232-2A	Swivel Block 4x4x3 (before serial #17805)
	A123232-2	Swivel Block 4x6x3 (serial #17805 and above)
17.	A123232-1	Hitch: Retaining Collar

FRONT WHEEL & HUB ASSEMBLY



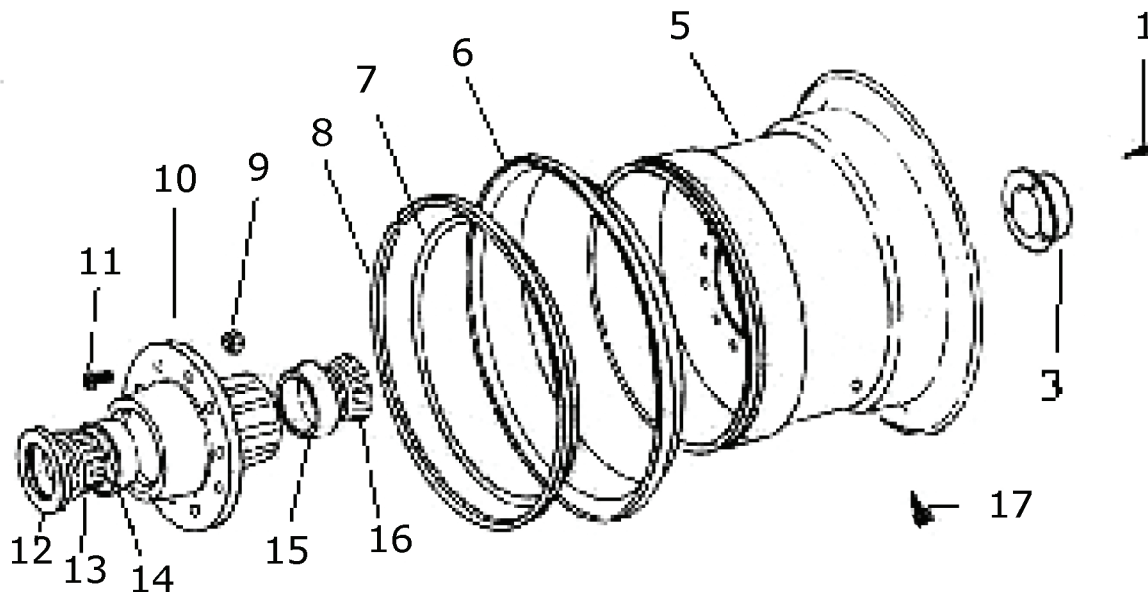
A-14004-2-ill

PARTS LIST

FRONT WHEEL and HUB ASSEMBLY-w/20.5-25 STANDARD TIRE MODEL I-175 XL2

<u>KEY NO.</u>	<u>PART NO.</u>	<u>DESCRIPTION</u>
1.	AFB-00080	Bolt 5/16" NC x 1/2"
3.	A14004	Hub Cap
5.	A14006A	Wheel 17" x 25"
6.	A14007A	Side Ring for 17" x 25" Wheel
7.	A14008	"O" Ring
8.	A14009	Lock Ring
9.	A10046	Lug Nut
10.	A14010	Hub
11.	A10176	Stud
12.	A14011	Grease Seal (CR 42624)
13.	A14012	Bearing Cone (Timken 749)
14.	A14013	Bearing Cup (Timken 742)
15.	A14014	Bearing Cup (Timken 632)
16.	A14015	Bearing Cone (Timken 644)
17.	A14016	Valve Stem

**FRONT WHEEL and HUB ASSEMBLY
w/22" x 25" Tire (Opt)**

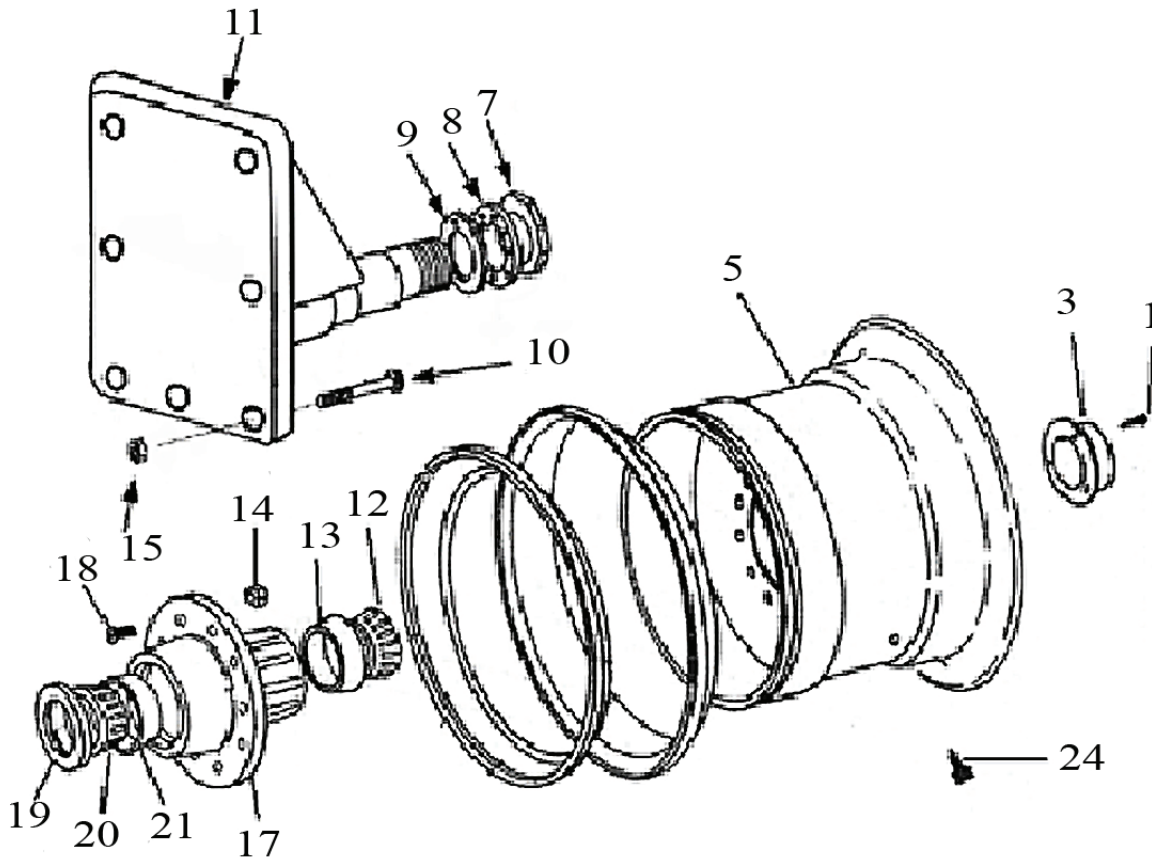


A-14004-2-ill

**PARTS LIST
FRONT WHEEL and HUB ASSEMBLY (Opt.)
MODEL I-175XL2**

KEY NO.	PART NO.	DESCRIPTION
1.	AFB-00080	Bolt 5/16" NC x 1/2" Lg.
3.	A14004	Hub Cap
5.	A125048	Wheel 22" x 25"
9.	A10046	Lug Nut
10.	A14010	Hub
11.	A10176	Stud
12.	A14011	Grease Seal (CR 42624)
13.	A14012	Bearing Cone (Timken 749)
14.	A14013	Bearing Cup (Timken 742)
15.	A14014	Bearing Cup (Timken 632)
16.	A14015	Bearing Cone (Timken 644)
17.	A14016	Valve Stem

**REAR WHEEL and HUB ASSEMBLY
w/26.5" x 25" Tire (Std)**

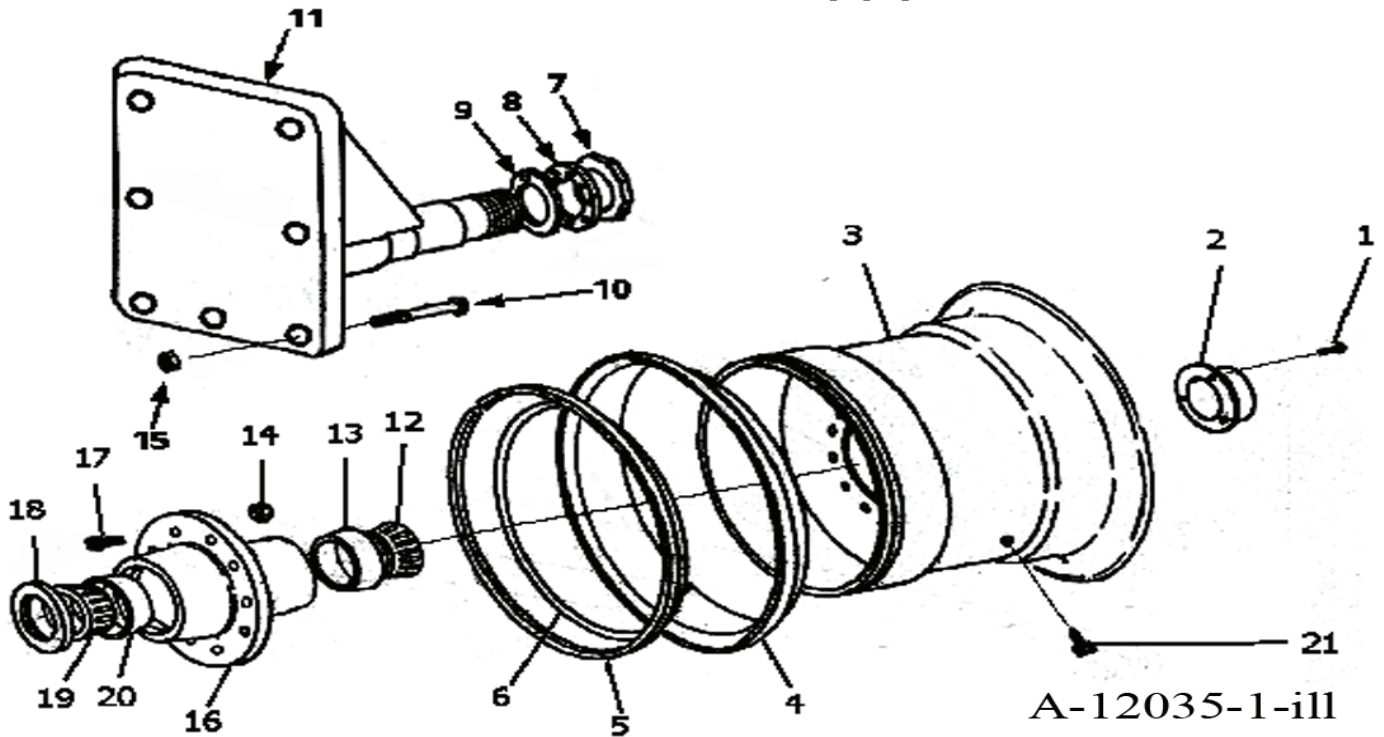


A-14010-1-ill

**PARTS LIST
REAR WHEEL and HUB ASSEMBLY (Std. Tire)
MODEL I-175XL2**

KEY NO.	PART NO.	DESCRIPTION
1.	AFB-00080	Bolt 5/16" NC x 1/2" Lg.
3.	A14004	Hub Cap
5.	A125048	Wheel 22" x 25", Side Ring, O-Ring & Lock Ring
7.	A10048	Spindle Nut
8.	A10049A	Lock Collar
9.	A10172	Nut with Lock Pin
10.	AFB-00067	Bolt 1-1/4" NF x 7-1/2" Lg.
11.	A123428	Spindle, 4-1/4" (S/N 21092 and above)
12.	A14015	Bearing Cone (Timken 644)
13.	A14014	Bearing Cup (Timken 632)
14.	A10046	Lug Nut
15.	AFN-00009	Nut: Lock 1-1/4" NF GRC Zinc
17.	A14010	Hub
18.	A10176	Stud
19.	A14011	Grease Seal (CR 42624)
20.	A14012	Bearing Cone (Timken 749)
21.	A14013	Bearing Cup (Timken 742)
24.	A14016	Valve Stem

**REAR WHEEL and HUB ASSEMBLY
w/29.5 x 25 Tire (opt)**



A-12035-1-ill

**PARTS LIST
REAR WHEEL and HUB ASSEMBLY
MODEL I-175XL2 - w/29.5 X 25 TIRE OPTION**

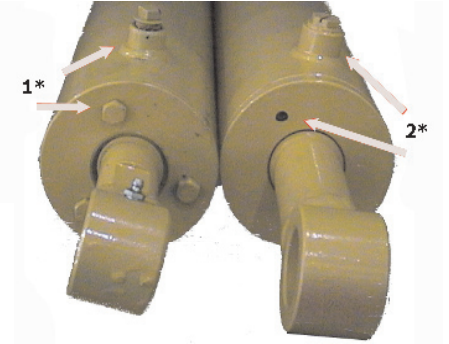
KEY NO.	PART NO.	DESCRIPTION
1.	AFB-00082	Bolt 5/16" NC X 1/2" Lg.
2.	A14004	Hub Cap
3.	A12036	Wheel Ass'y. 25" x 25"
	A12036-1	Center Dish Weldment, Flat
	A12036-2	Six Gussets for Center Dish
4.	A12041	Side Ring
5.	A12042	Lock Ring
6.	A12047	O-Ring
7.	A10048	Spindle Nut
8.	A10049A	Lock Collar
9.	A10172	Nut with Lock Pin
10.	AFB-00067	Bolt 1-1/4" NF X 7-1/2" Lg.
11.	A123350	Spindle 5-3/4"
12.	A125001	Bearing Cone (Timken# H715348)
13.	A125002	Bearing Cup (Timken# H715311)
14.	A12051	Lug Nut
15.	AFN-00009	Lock Nut: 1-1/4" NF
16.	A12035	Hub
17.	A12050	Lug
18.	A12037	Grease Seal (National# 416039)
19.	A125003	Bearing Cup (Timken# HM624749)
20.	A125004	Bearing Cone (Timken# HM624710)
21.	A14016	Valve Stem

APRON CYLINDER 4"x13"

Part #A125050

s.n. 20750 and above effective 06/03

If you have 3 capscrew headcap refer to the next page.

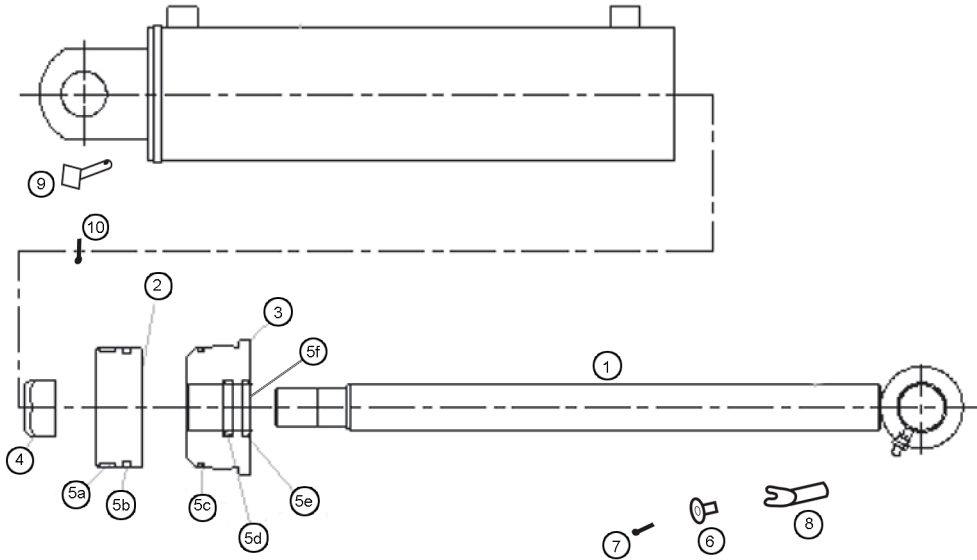


1* OLD STYLE

The older apron cylinder can be identified by 3/8" NPT ports & 3 bolts on the headcap of the gland.

2* NEW STYLE

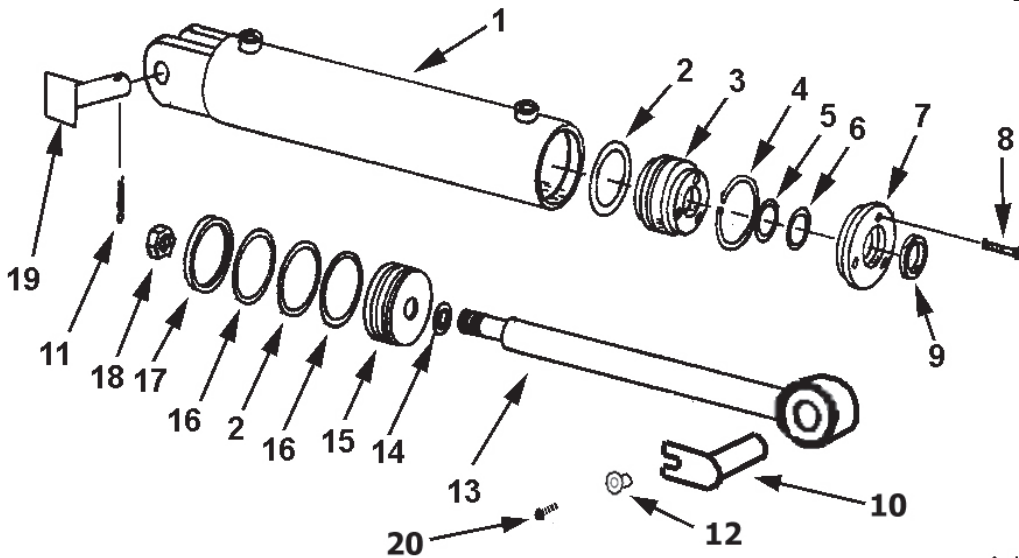
The new style, effective 6/25/03, has 7/8" o-ring base ports & the gland is threaded into I.D. of the barrel. Identified by the 2 holes on the end of the cylinder.



A-125050-III

ITEM	PART ITEM	DESCRIPTION
1	A125050-01	Rod 1-3/4" with welded eye
2	A125050-02	Piston
3	A125050-03	Gland, Threaded
4	A125050-04	Lock Nut, 1-1/8" NF
5	A125050-05	Seal Kit, a-f
	A125050-05a	Nylon Wear Ring
	A125050-05b	FSP Seal
	A125050-05c	O-Ring
	A125050-05d	Backup Washer
	A125050-05e	Hallite Rod Seal
	A125050-05f	Snap-in Rod Wiper
6	A123351	Bushing, Retaining Flange 9/16 ID x 3/4 OD, 3/4 Lg.
7	AFB-00015	HHCS 1/2"NC x 1-1/2" Bolt, Gr. 8
8	A123362	Pin, 1-1/2" with slot for keeper bushing
9	A123363	Pin: 1-1/2" square head
10	8602	Pin, Cotter 1/4" x 2" Zinc

LEFT & RIGHT SIDE APRON CYLINDER 4 X 13



A-123365

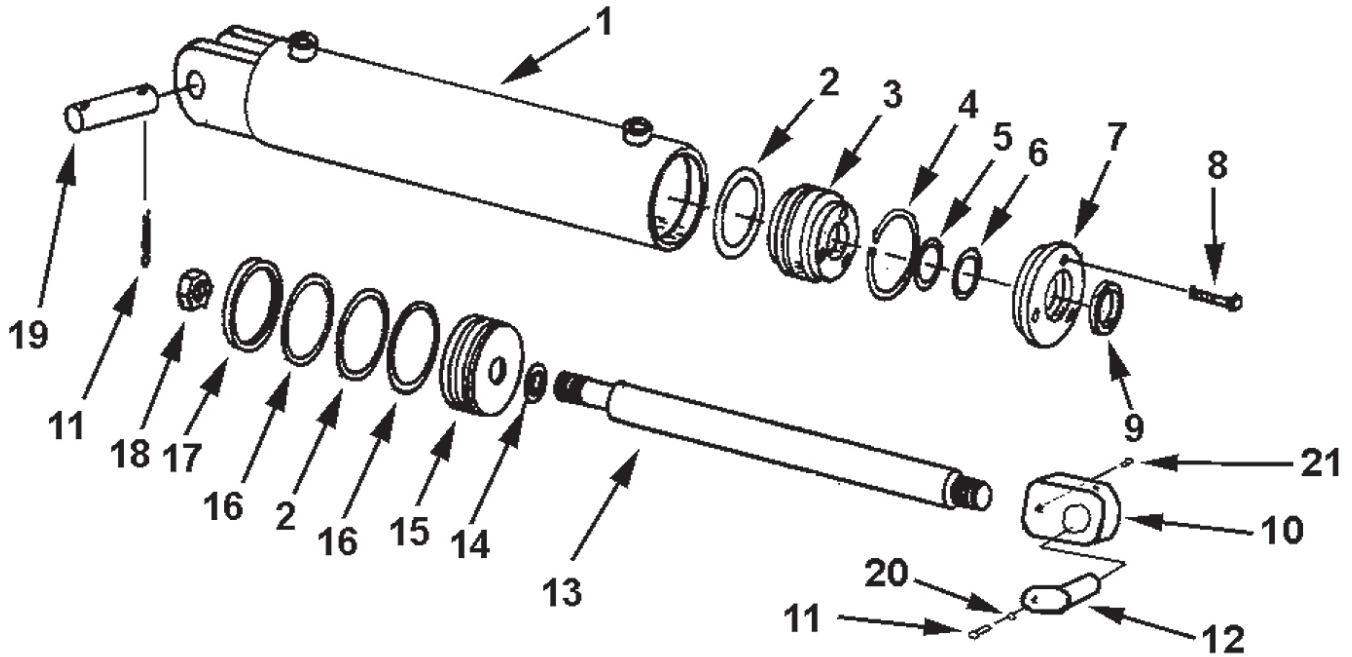
IMPORTANT

Some units prior to this serial number were upgraded to a H.D. Apron Cylinder by the customer. Please determine if the cylinder pins are 1-1/2" diameter. If pins are 1" or 1-1/4" and is inserted into a thread block ear on the rod end please refer to page 17.

MODEL I-175XL2 LEFT & RIGHT SIDE APRON CYLINDER 4 X 13 PART NO. A123365

<u>KEY NO.</u>	<u>PART NO.</u>	<u>DESCRIPTION</u>
1.	A123365-05	Cylinder Barrel
2.	A300H06	O-Ring: 4" OD x 3/16"
3.	A300H11	Head Gland
4.	A300H12	Retainer Ring
5.	A22H15	O-Ring: 1-1/2" ID x 1/8"
6.	A22H15A	Backup Washer: 1-1/2"
7.	A300H13	Gland Cap
8.	A22H18	Capscrew: 1/4" NC x 1"
9.	A22H17	Wiper Seal: 1-1/2" ID
10.	A123362	Pin, 1-1/2" with slot for keeper bushing
11.	8602	Pin, Cotter 1/4" x 2" Zinc
12.	A123351	Bushing, retaining flange, 9/16" ID x 3/4" OD, 3/4" L
13.	A123367	Rod, S/N 20497 + Welded Eye with 1-1/2" Hole
** If your unit has thread block type rod end see following page **		
14.	A45H05	Piston Gasket: 1"
15.	A300H07	Piston: 4" Dia.
16.	A300H05	Backup Washer: 4" OD
17.	A300H04	Cast Iron Ring: 4" OD
18.	A300H03	Piston Nut, 1" NF
19.	A123363	Pin: 1-1/2" square head
20.	AFB-00015	HHCS 1/2" NC x 1-1/2" Gr. 8
	A300H14B	Packing Kit, Containing:
		(1) A300H04 (2) A22H15
		(2) A300H05 (1) A22H15A
		(2) A300H06 (1) A22H17
		(1) A45H05

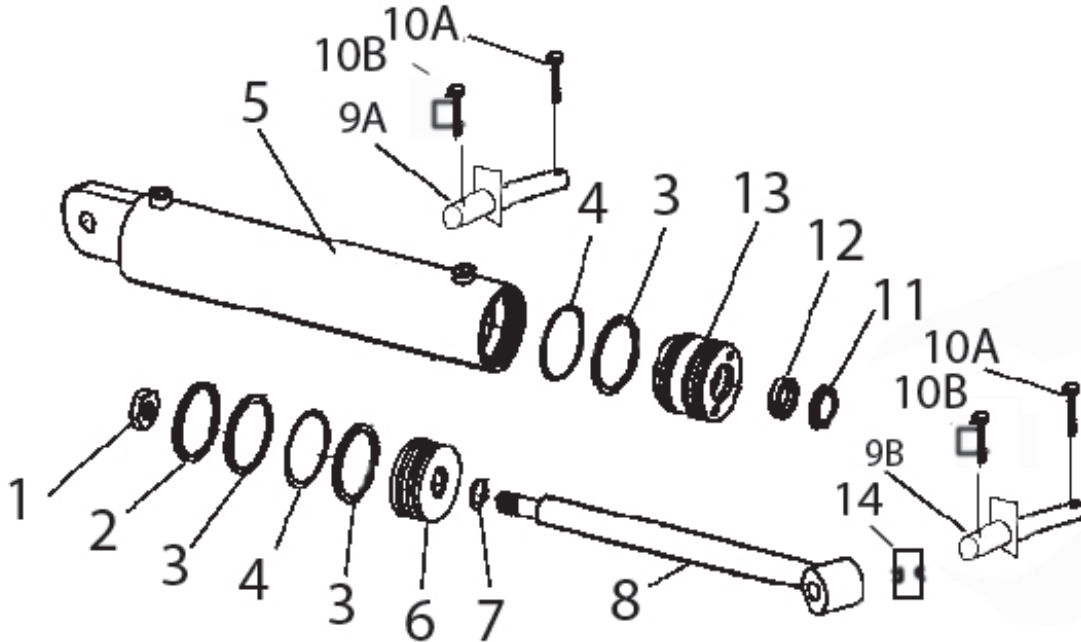
4" x 13" APRON CIRCUIT A123319



A-123319-ILL

KEY NO.	PART NO.	DESCRIPTION
1	A175H01	Barrel Assembly
2	A300H06	O-ring seal, 4" OD x 3/16"
3	A300H11	Head gland
4	A300H12	Retainer ring
5	A22H15	O-ring, 1-1/2" x 1/8"
6	A22H15A	Backup washer
7	A300H13	Head cap
8	A22H18	Capscrew, 1/4 NC x 1"
9	A22H17	Wiper seal, 1-1/2" ID
10	A123345	Block type apron cyl., rod end cyl. 1"
11	A123351	Pin keeper bushing
12	A123336	Pin: Tab Head
13	A175H02	Shaft, 1-1/2" diameter
14	A45H05	Piston gasket, 1"
15	A300H07	Piston, 4" dia.
16	A300H05	Back up washer, 4" OD
17	A300H04	Cast iron ring, 4" OD
18	A300H03	Piston nut, 1" NF
19	A1217E	Pin, 1" x 3-1/2" w/tab head
20	8602	Cotter pin
21	AFB-00062	Allen set screws
22	14505	Grease fitting
23	AFB-00015	Bolt, 1/2" x 1-1/2" NC
	A300H14B	Packing kit containing:
		1 - A300H04 2 - A22H15 2 - A300H05
		1 - A22H15A 2 - A22H06 1 - A22H17
		1 - A45H05

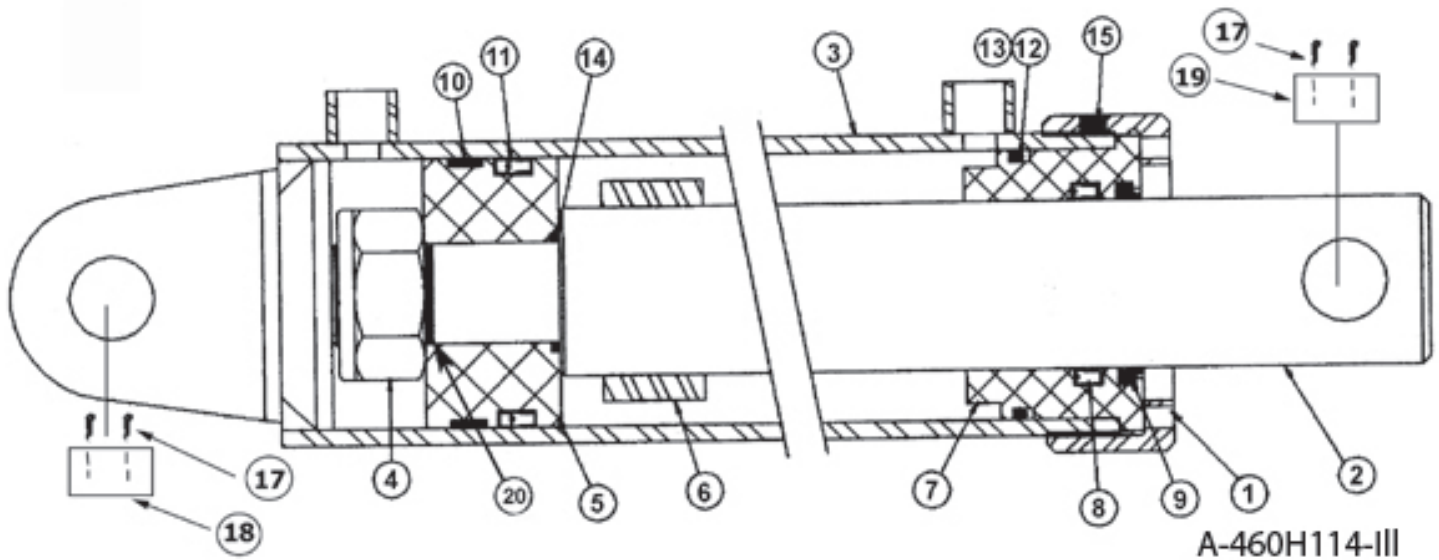
**HYDRAULIC CYLINDER - A520H275 5" X 20"
LIFT CYLINDER**



A-520h275-ill

**PARTS LIST
LIFT CYLINDER**

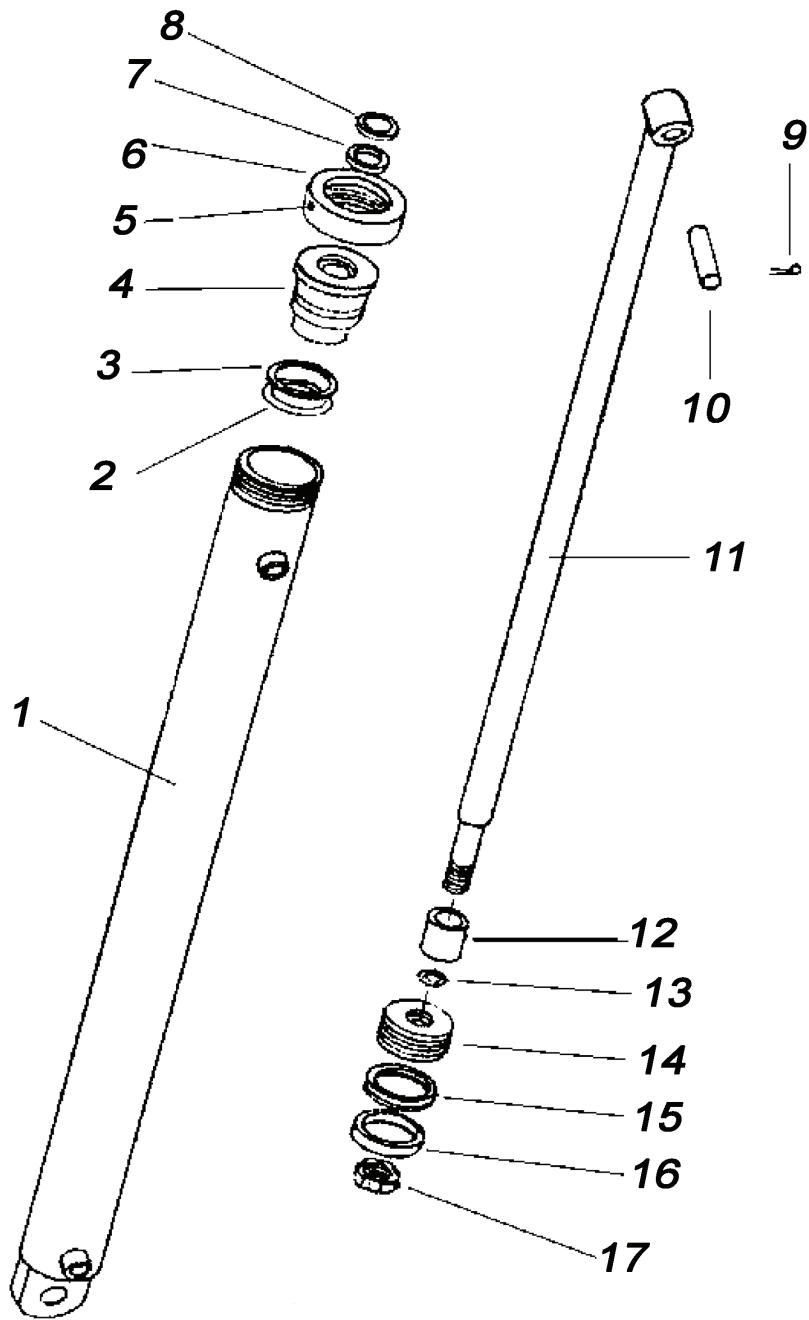
KEY NO.	PART NO.	DESCRIPTION
1.	A400H17	Nut 1-1/4" NF, Lock Type
2.	A400H04	Cast Ring, 5" OD
3.	A400H05	Back-up Washer, 5" OD x 1/4"
4.	A400H06	"O" Ring, 5" OD x 1/4"
5.	A80H35	Barrel Assembly with 2" holes
6.	A80H01	Piston, 5" OD
7.	A60H52	"O" Ring, 1-1/4" OD x 1/16"
8.	A80H32	Shaft 2" Dia.
9A.	A123372	Pin, upper
9B.	A123335	Pin, lower
10A.	AFP-00001	Cotter Pin, 1/4" x 3"
10B.	A125006	SafetySnap Pin
11.	A80H06	Wiper Seal 2" ID
12.	A80H04	Seal 2" ID
13.	A80H05A	Head Gland
	A80H07	Packing Kit, Containing:
		(1) A400H04 (1) A60H52
		(3) A400H05 (1) A80H04
		(2) A400H06 (1) A80H06
14.	A123231-88	Spacer for lower Pin



SN: 21238 AND LATER

ITEM	QTY	PART NUMBER	DESCRIPTION
1	1	A123360-01	BARREL
2	1	A123360-02	ROD
3	1	A123360-03	PISTON
4	1	A123360-04	GLAND
5	1	A123360-05	LOCK NUT
6	1	A123360-06	SCREW
7	1	A123360-07	SPACER SLEEVE
8	1	A123360-08	PISTON SEAL
9	1	A123360-09	WEAR RING
10	1	A123360-10	O-RING
11	1	A123360-11	WEAR RING
12	1	A123360-12	ROD SEAL
13	1	A123360-13	WIPER
14	1	A123360-14	O-RING
15	1	A123360-15	BACK-UP RING
16	1	A123360-16	SEAL KIT, INCLUDES ITEMS 8 - 15
17	2	A123323-38	Rod End Pin 5-1/16 x 1-1/2
18	2	A123323-41	Barrel End Pin 4-9/16 x 1-1/2
19	8	AFP-00001	1/4 x 3 Cotter Pin

**HYDRAULIC CYLINDER - A4560H114, 4-1/2" X 60"
MODEL I-175XL2 PUSH OFF CYLINDER
SN: 21237 AND EARLIER**

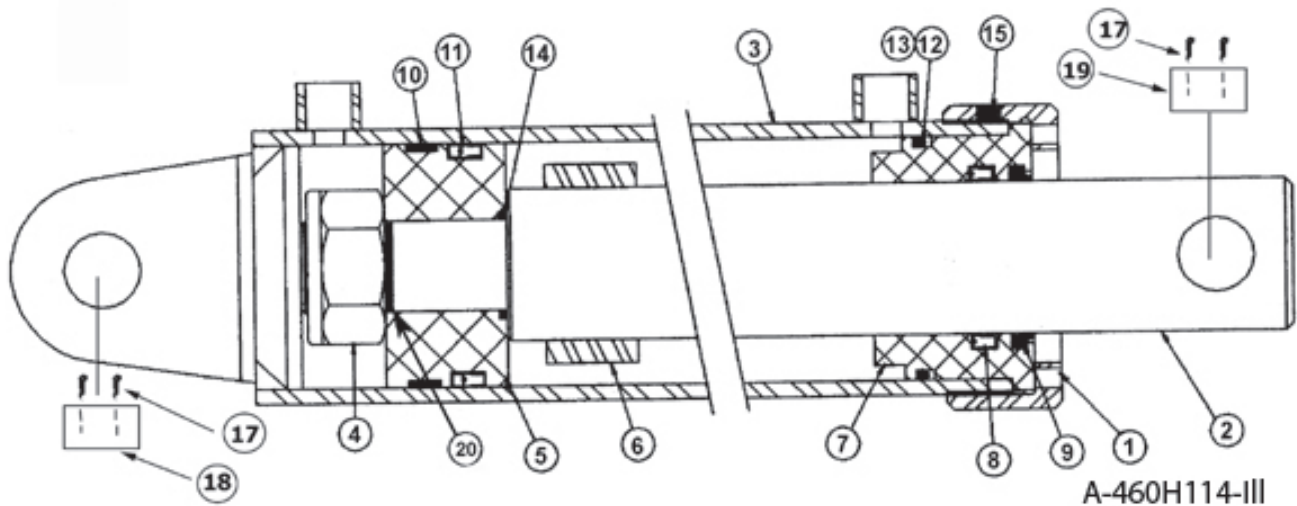


A-4560h114-ill

PARTS LIST
PUSH OFF CYLINDER, A4560H114, 4-1/2" x 60"
MODEL I-175XL2

KEY NO.	PART NO.	DESCRIPTION
1.	A175H08	Barrel Assembly, 4-1/2" Bore
2.	A175H03	"O" Ring, 4-1/2" OD x 4-1/8" ID
3.	A175H04	Back Up Washer, 4-1/2" OD x 4-1/8" ID
4.	A175H09	Head Gland
5.	-----	Set Screw, 3/8" NC
6.	A175H10	Collar
7.	A140H07	Shaft Seal, 2-1/2" ID, OU-Cup
8.	A140H08	Wiper Seal
9.	AFP-00001	Cotter Pin, 1/4" x 3"
10.	A10038	Pin, 1-1/4" Dia. x 4-1/4" Lg.
11.	A175H11	Shaft, 2-1/2" Dia.
12.	A175H06	Spacer
13.	A22H15	"O" Ring, 1-1/2" x 1-3/4" OD
14.	A175H12	Piston
15.	A175H05	Piston Seal, 4-1/2" OD
16.	A175H07	Wear Ring, 4-1/2" OD
17.	AFN-00018	Nut, Lock Type, 1-1/2" NF
	A175H15	Packing Kit, Containing:
		(1) A175H03 (1) A175H04
		(1) A140H07 (1) A140H08
		(1) A22H15 (1) A175H05
		(1) A175H07

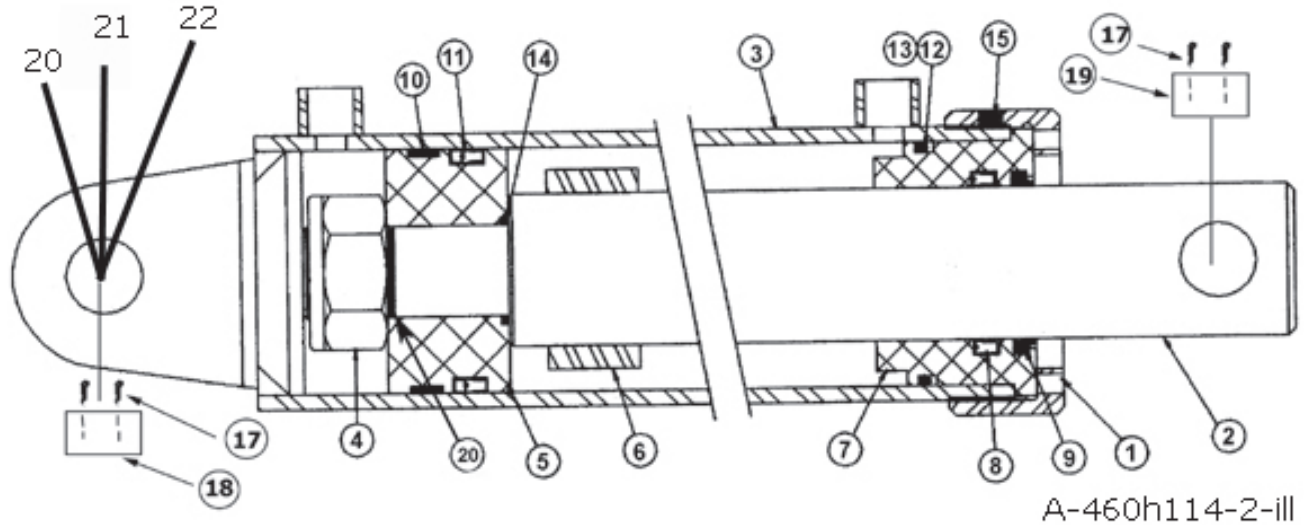
**PUSH GATE CYLINDER ASSEMBLY, A460H114
4" BORE X 60" STROKE, MODEL I-175XL2
SN: 21237 AND EARLIER**



KEY NO.	PART NO.	DESCRIPTION
1	A101H103	Collar
2	A175H11	2 1/2" Rod
3	A160H02	Barrel weldment
4	AFN-00018	Lock nut (1-1/2" - 12)
5	A101H96	Piston
6	A175H06	Spacer, 3-1/2"
7	A101H102	Head
8	A140H07	Rod seal
9	A140H08	Rod wiper
10	A101H100	Wear ring
11	A101H101	Piston seal
12	A300H06	O-ring
13	A300H05	Backup ring
14	A101H26	O-ring
15	AFB-00061	Nylon tip set screw (3/8" NC x 3/8)
16	A160H04	Seal kit (Items 8-14)
17	8602	Cotter pin, 1/4" x 2"
18	A9024	Pin, 1-1/4" diameter x 4-3/4" long
19	A14033	Pin, 1-1/4" diameter x 5" long
20	A123427	Washer, 1-1/2" ID, 2-3/4" OD, 3/4" Long
21.	A125178-35	Bushing

Push Gate Cylinder Assembly A460H114

4" BORE x 60" STROKE, Model I-175 XL2



ITEM	QTY	PART NUMBER	DESCRIPTION
1	1	A123360-01	BARREL
2	1	A123360-02	ROD
3	1	A123360-03	PISTON
4	1	A123360-04	GLAND
5	1	A123360-05	LOCK NUT
6	1	A123360-06	SCREW
7	1	A123360-07	SPACER SLEEVE
8	1	A123360-08	PISTON SEAL
9	1	A123360-09	WEAR RING
10	1	A123360-10	O-RING
11	1	A123360-11	WEAR RING
12	1	A123360-12	ROD SEAL
13	1	A123360-13	WIPER
14	1	A123360-14	O-RING
15	1	A123360-15	BACK-UP RING
16	1	A123360-16	SEAL KIT, INCLUDES ITEMS 8 - 15
17	1	A123323-38	Rod End Pin 5-1/16 x 1-1/2
18	1	A123323-41	Barrel End Pin 4-9/16 x 1-1/2
19	4	AFP-00001	1/4 x 3 Cotter Pin
20	1	A125178-35	Bushing
21	1	A125178-36	Retaining Ring
22		14505	Grease Fitting

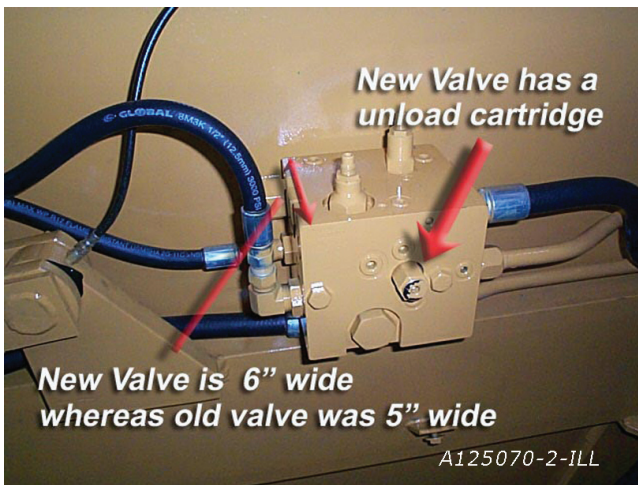
HYDRAULIC VALVE IDENTIFICATION



New Valve



Old Valve



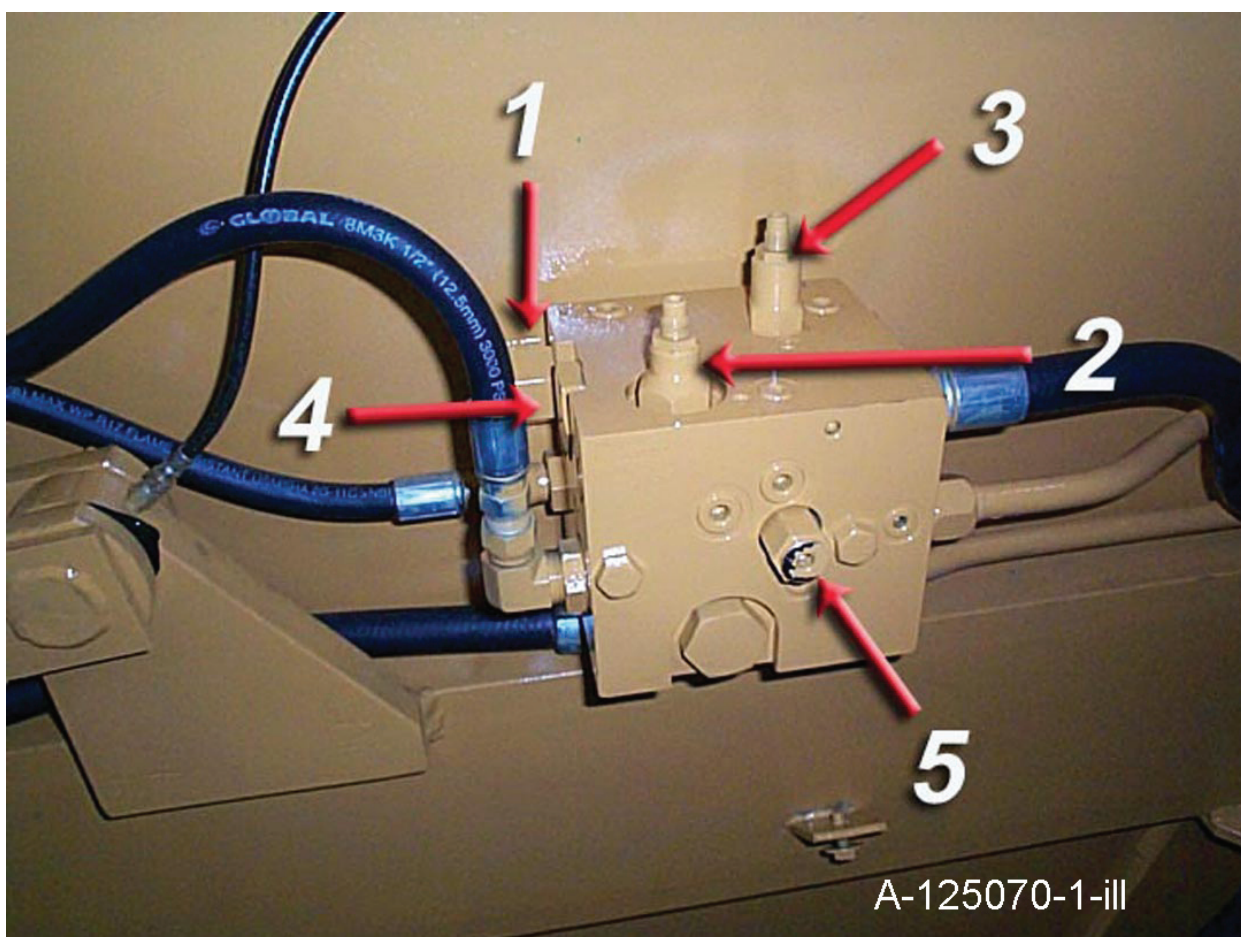
Visually there are several things you can check to ensure you have the correct valve. The new valve (shown on the left) is 6" wide whereas the older valve (shown below) was 5" wide. The new valve utilizes a unload cartridge that sticks outward on the side of the valve.



IMPORTANT: This Hyd. Manifold was intergrated into production Nov. 2003 It replaces A125055 valve which was used on S.N. 20750 to 20853. To confirm which valve you have, confirm with earlier valve I.D. page

**HYDRAULIC MANIFOLD ASSEMBLY
A125070**

S.N. 20853 & above



ITEM #	PART NO.	DESCRIPTION
1	A125070-01	DIRECTIONAL CONTROL VALVE
2	A125070-02	APRON SEQUENCE CARTRIDGE
3	A125070-03	PUSHOFF SEQUENCE CARTRIDGE
4	A125070-04	CHECK VALVE CARTRIDGE
5	A125070-05	UNLOAD CARTRIDGE

SETTING THE APRON AND PUSHOFF VALVE

The manifold block containing the pushoff sequence valve cartridge and apron sequence valve cartridge is used to control two hydraulic circuits with one hydraulic remote. When the tractor hydraulic remote is activated, oil flows first to the apron cylinders until they are fully extended. Once the cylinders are fully extended, the apron circuits' hydraulic pressure begins to increase. Once the pressure threshold is surpassed (which is adjustable. See adjustment section), the sequence valve diverts the oil flow to the pushoff's hydraulic circuit. Once the push off is completely extended the operator then reverses the tractors hydraulic remote. The counterbalance valve will hold the apron open until the push off is fully retracted. The Apron sequence valve then opens and allows the apron to close.

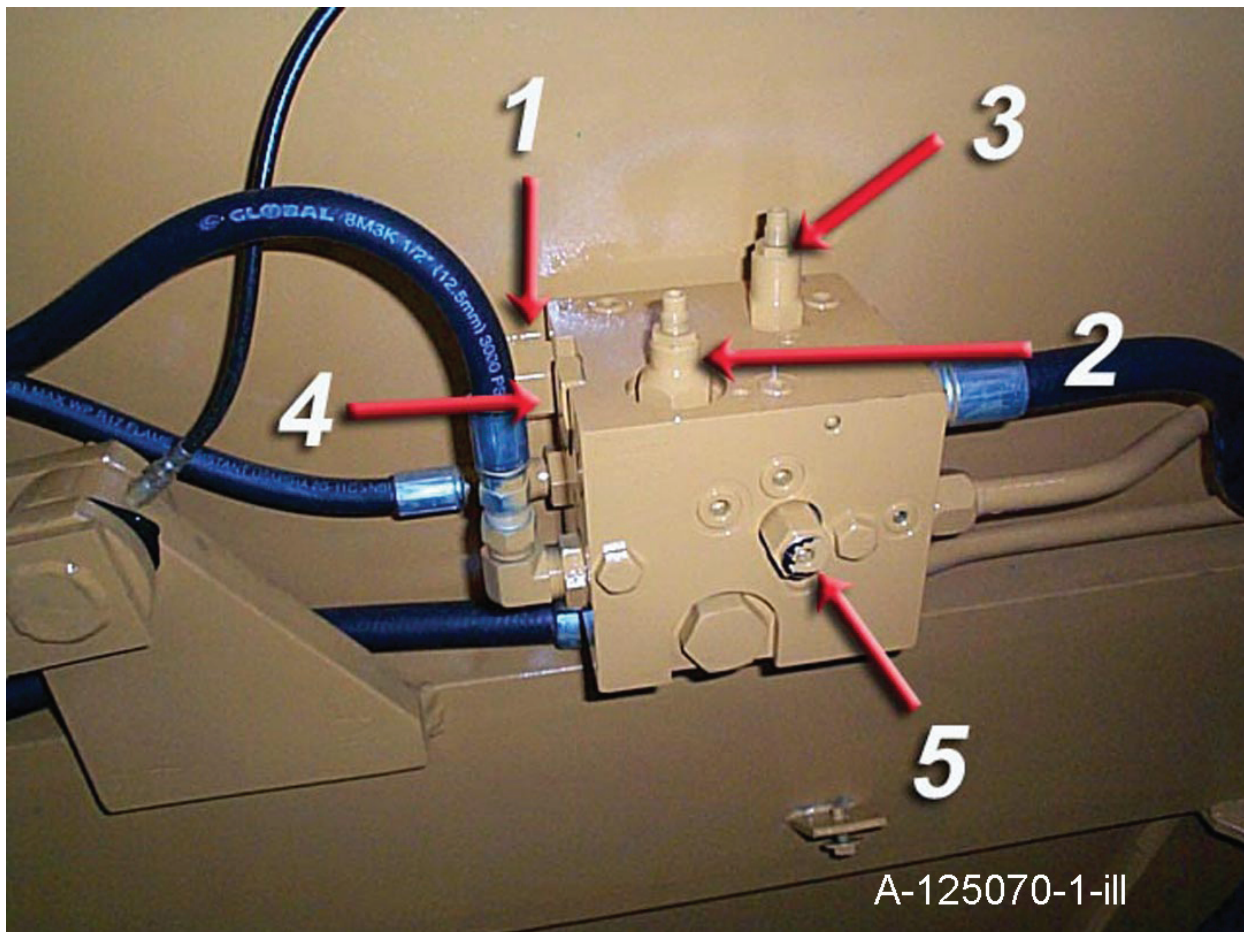
Setting the valves:

STEP 1 PUSHOFF SEQUENCE VALVE

Loosen the lock nut (3/4") on the sequence valve cartridge. Turn the setscrew (1/4") clockwise until the front apron rises before the push-off begins to advance. (Earthmover should be empty) Turn the adjustment screw an additional 1/4 turn clockwise and tighten jam nut.

STEP 2 APRON SEQUENCE VALVE

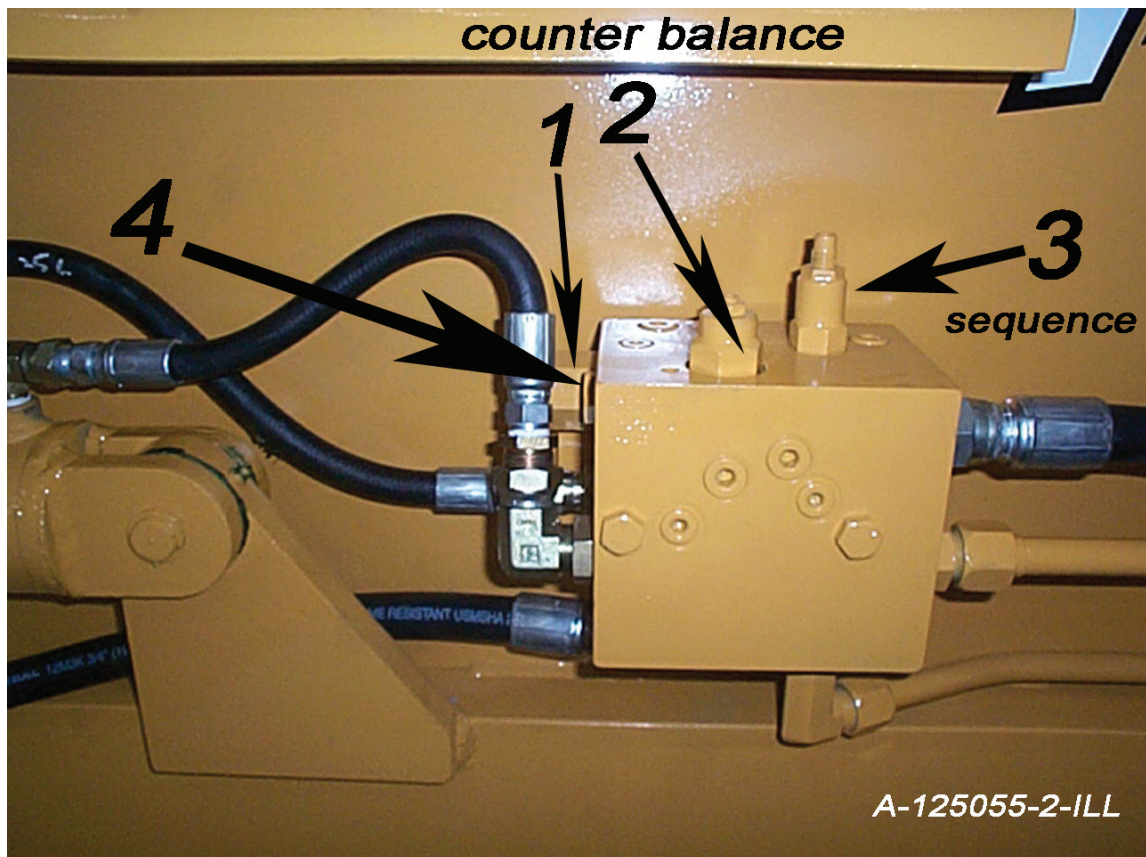
Loosen the lock nut (3/4") on the counterbalance valve cartridge. Turn the setscrew (4 mm) clockwise until the apron holds in a raised position while rear gate is being retracted. Turn adjustment screw an additional 1/4 turn, tighten jam nut. DO NOT tighten adjusting screw more than necessary.



IMPORTANT: This Hyd. Manifold has been replaced by A125070 on Nov 2003. To confirm which valve you have, confirm with earlier valve I.D. page

**HYDRAULIC MANIFOLD ASSEMBLY
A125055**

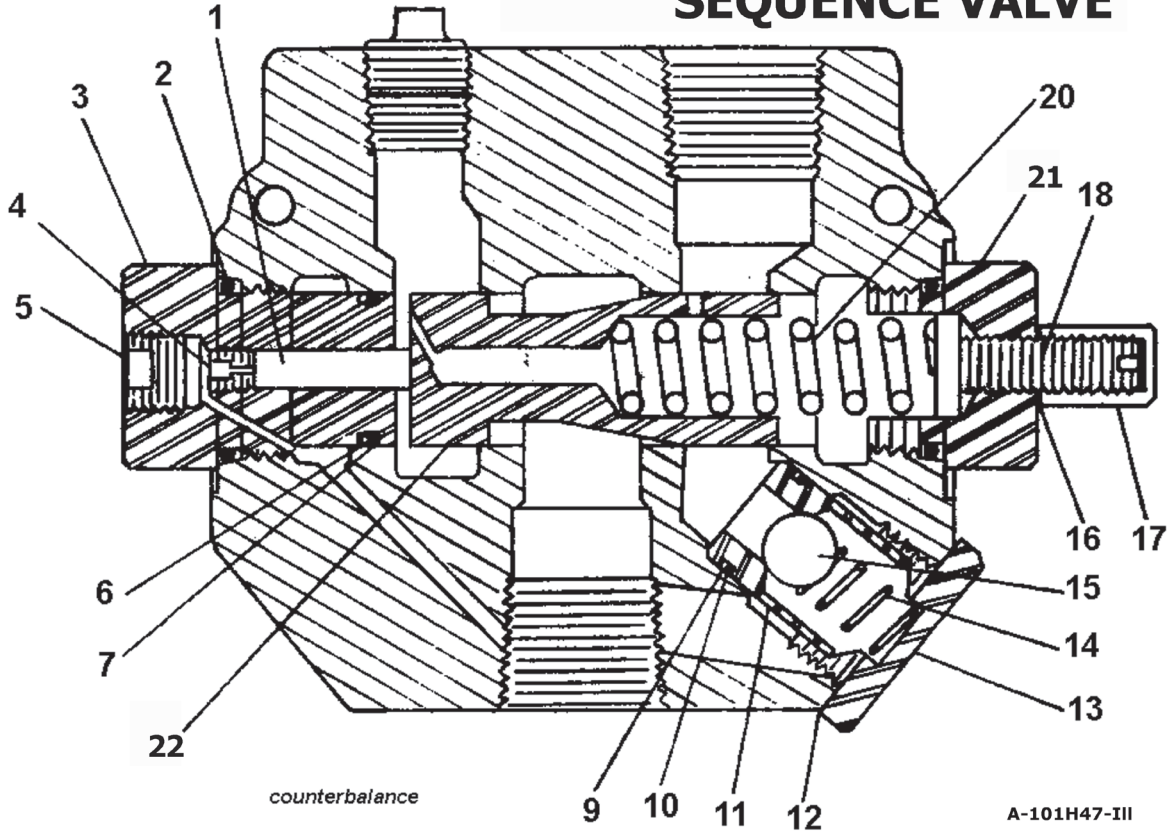
S.N. 20750 to 20853



ITEM #	PART NO.	DESCRIPTION
1	A125055-01	DIRECTIONAL CONTROL VALVE
2	A125055-02	COUNTER BALANCE CARTRIDGE
3	A125055-03	SEQUENCE CARTRIDGE
4	A125055-04	CHECK VALVE
5	A125055	COMPLETE ASSEMBLY WITH ALL VALVES

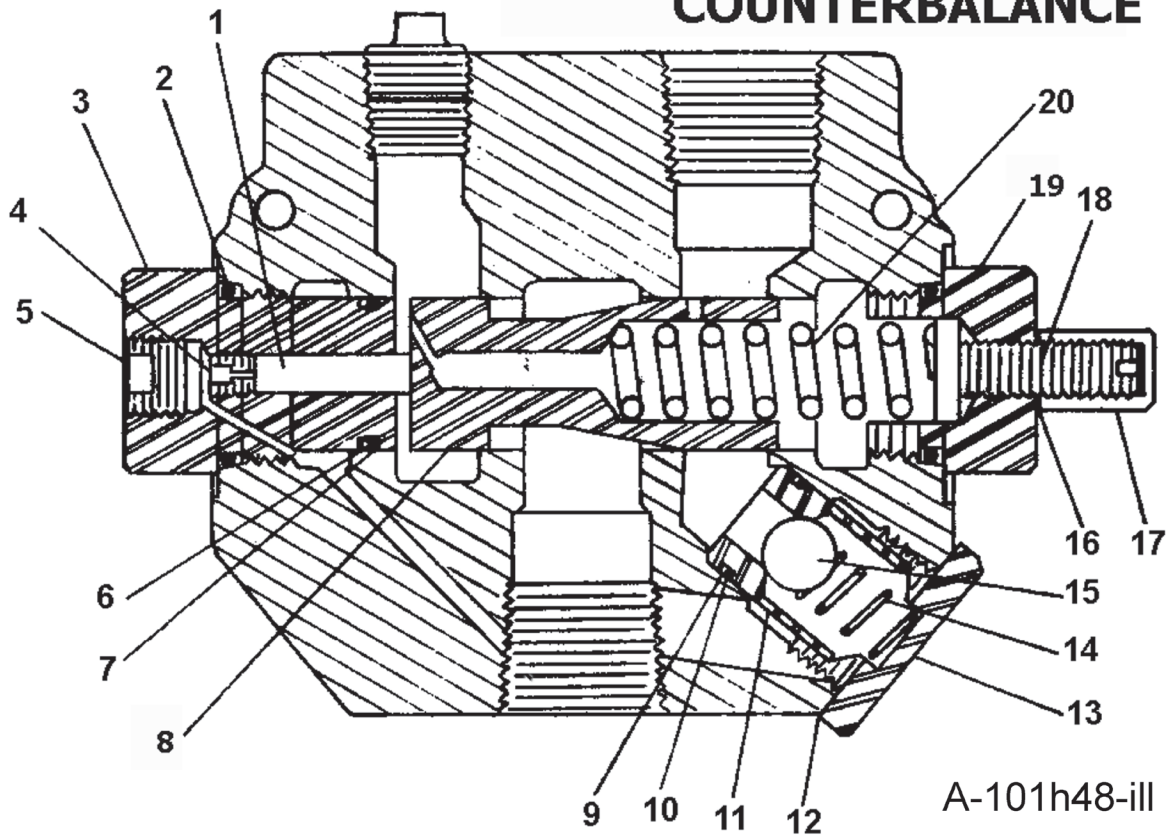
SEQUENCE VALVE PART #A101H47

SEQUENCE VALVE



COUNTERBALANCE VALVE PART #A101H48

COUNTERBALANCE



SEQUENCE AND COUNTERBALANCE VALVE PARTS LIST

SEQUENCE VALVE PART #A101H47 COUNTERBALANCE VALVE PART #A101H48

KEY #	PART NO.	DESCRIPTION
1	A101H49	Piston
2	A101H50	O-ring
3	A101H51	External pilot plug
4	A101H52	Orifice
5	A101H53	Plug
6	A101H54	O-ring
7	A101H55	Backup washer
*8	A101H56	Metering spool
9	A101H57	Backup washer
10	A101H58	O-ring
11	A101H59	Check seat
12	A101H60	Aluminum washer
13	A101H61	Check plug
14	A101H62	Check spring
15	A101H63	Check ball
16	A101H64	Aluminum washer
17	A101H65	Acorn nut
18	A101H66	Adjusting screw
19	A101H67	Adjusting plug - RD1075 CB
20	A101H68	Metering spring
21	A101H69	Adjusting Plug - RD1075 SM
22	A101H70	Metering Spool
*	A101H71	Valve body
	AHS-00002	Seal Kit

* NOT SOLD SEPARATELY

IMPORTANT: This Hyd. Manifold was intergrated into production April, 2006
 It replaces A125070 valve.
 For older machines see master parts book on Ashlandind.com.

**HYDRAULIC MANIFOLD ASSEMBLY
 A125174
 S.N. 21403 & above
 SETTING THE APRON AND PUSHOFF VALVE**

The manifold block containing the pushoff sequence valve cartridge and apron sequence valve cartridge is used to control two hydraulic circuits with one hydraulic remote. when the tractor hydraulic remote is activated, oil flows first to the apron cylinders until they are fully extended. Once the cylinders are fully extended, the apron circuits' hydraulic pressure begins to increase. Once the pressure threshold is surpassed (which is adjustable. See adjustment section), the sequence valve diverts the oil flow to the pushoff's hydraulic circuit. Once the push off is completely extended the operator then reverses the tractors hydraulic remote. The counterbalance valve will hold the apron open until the push off is fully retracted. The Apron sequence valve then opens and allows the apron to close.

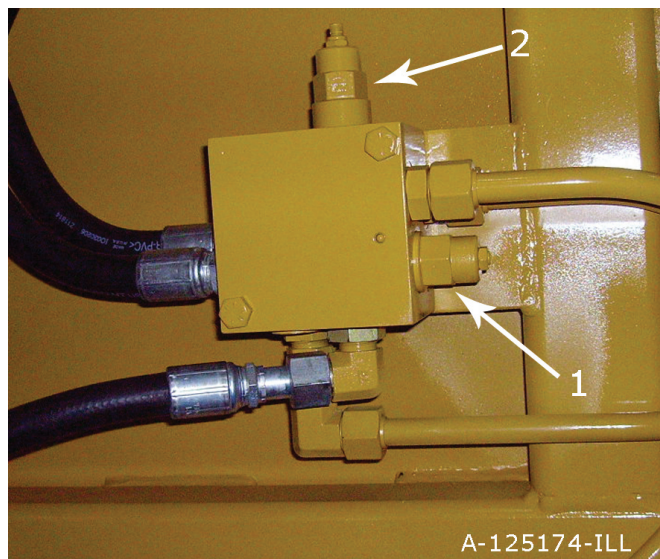
Setting the valves:

STEP 1 PUSHOFF SEQUENCE VALVE

Loosen the lock nut (9/16") on the sequence valve cartridge. Turn the setscrew (4mm) clockwise until the front apron rises before the push-off begins to advance. (Earthmover should be empty) Turn the adjustment screw an additional 1/4 turn clockwise and tighten jam nut.

STEP 2 Counter Balance VALVE

Loosen the lock nut (9/16") on the counterbalance valve cartridge. Turn the setscrew (4mm) counter-clockwise until the apron holds in a raised position while rear gate is being retracted. Turn adjustment screw an additional 1/4 turn, tighten jam nut. DO NOT tighten adjusting screw more than necessary.



ITEM #	PART NO.	DESCRIPTION
1	A125162-01	CENTER BALANCE CARTRIDGE
2	A125162-02	SEQUENCE CARTRIDGE

MAINTENANCE CHECKLIST

1. Grease all zerks.
 - a) Every 8 hours of operation.
 - b) See Lubrication Points section on following page.

2. Greasing the hubs.
 - a) Re-pack wheel bearings after 600 hrs of operation.
 - b) Completely clean grease out of hub and bearings every 1200 hours of operation.

3. Check tire pressure.
 - a) 20.5 - 25, 12-ply tire requires a tire pressure of 35-40 psi on a rear machine, 40-50 on a front machine.

4. Check all pins for signs of wear.
 - a) Daily

5. Check wheel lug nut torque.
 - a) After first 2 hours of operation.
 - b) Recheck daily for next 2 weeks.
 - c) Tighten wheel lug nuts in a star pattern.
 - d) Torque wheel lug nuts to 450 ft-lbs.

6. Check and retighten all bolts.
 - a) After initial 10 hours of use.
 - b) Again after 50 hours of use.
 - c) See Torque Specifications on following page.

7. Inspect cutting edges.
 - a) Daily
 - b) Replace cutting edges when center blade has been worn to approximately 6" and side edges worn to approximately 4".



CAUTION! Failure to replace worn cutting edges may result in unnecessary wear to the earthmover sides and floor.

Note: Please specify left or right "L" shaped cutting edges when ordering replacements.

TORQUE SPECIFICATIONS

<i>Grade 8</i>	
<i>Bolt</i>	<i>Torque</i>
<i>Diameter</i>	<i>ft-lbs</i>
1/4"	12
5/16"	25
3/8"	45
7/16"	70
1/2"	110
9/16"	150
5/8"	220
3/4"	380
7/8"	600
1"	900
1-1/8"	1280
Lug Nuts	750

LUBRICATION

1. Grease all zerks every 8 hrs of operation with high quality, general-purpose grease.
 - a) Grease until grease flows from around pin.

Lubrication Points

1. Hitch – Horizontal and vertical pins.
2. Lift Cylinders – Rod end & Trunion; Both left & right sides.
3. Front Arm Pivot Joint – Both left & right sides.
4. Apron Cylinders – Rod clevis pin; Both left & right sides.
5. Apron Pivot Pin – Both left & right sides.
6. Hold-down Rollers – Both left & right sides.
7. Floor Rollers – Both left & right sides.
8. Tapered Rollers – Both left & right sides.

HYDRAULIC SYSTEM

Standard Two-Circuit Hydraulic Plumbing

The apron cylinders and the push-off cylinder are controlled on the same circuit with the sequence of the operation controlled by a sequence valve. The other hydraulic circuit controls the lift cylinders on the earthmover.

***To adjust the sequence valve, see Troubleshooting section.**

Optional Three-Circuit Hydraulic Plumbing

The apron cylinders, push-off cylinder, and lift cylinders are all on separate hydraulic circuits.

TROUBLESHOOTING

Introduction

With proper care and maintenance, the I-175XL2 will give many years of reliable service. When a situation arises where the earthmover performance is not satisfactory, this section will give some pointers on finding and correcting the problem.

Grease zerk will not take grease.

1. Grease zerk plugged.
 - a) Remove and replace grease zerk.
2. Pin is frozen.
 - a) Remove, clean, and inspect pin.
 - b) Replace pin if necessary.
3. Bushing grease passage is not aligned with grease zerk.
 - a) Remove, clean, inspect, and realign bushing.
 - b) Replace bushing if necessary and realign.

Push-off rollers do not roll.

1. The rollers need lubrication.
 - a) Check zerk hole and grease.
 - b) Remove pin, clean, inspect, and replace if necessary.
2. The roller bushing is worn out.
 - a) Remove roller assembly and replace bushing.
 - b) See parts manual.

Cylinders will not hold in preset position, i.e. the cylinder creeps.

1. Seals leaking internally.
 - a) Remove and replace seal kit.

Limited Warranty Statement

Ashland Industries Inc. warrants each new product to be free from defects in material and workmanship. This warranty is applicable only for the normal service life expectancy of the product or components, not to exceed **six consecutive months** from the date of delivery of the new Ashland Industries product to the purchaser, or the date the product is first put into service via a rental agreement or other means, whichever occurs first.

The major components of swivel hitches used on Industrial series scrapers are warranted for three consecutive months from the date of delivery of the new Ashland Industries product to the purchaser, or the date the product is first put into service via a rental agreement or other means, whichever occurs first, except those components described below.

Genuine Ashland Industries Inc. replacement parts and components will be warranted for 30 days from date of purchase, or the remainder of the original equipment warranty period, whichever is longer.

Under no circumstances will it cover any merchandise or components thereof, which in the opinion of the company, has been subjected to misuse, unauthorized modification, alterations, an accident or if repairs have been made with parts other than those obtained through Ashland Industries Inc.

Ashland Industries Inc. in no way warrants Tires since their respective manufacturer warrants these items separately. Please call Ashland Industries Inc. to receive phone numbers of tire suppliers.

Ashland Industries Inc. in no way warrants wearable items such as cutting edges, front dolly wheel balls, socket halves, rollers, bushings, yoke hitch pins, hitch bushings, etc..

Our obligation under this warranty shall be limited to repairing or replacing, free of charge to the original purchaser, any part that, in our judgement, shall show evidence of such defect, provided further that such part shall be returned within 30 days from the date of failure to Ashland Industries Inc. routed through the dealer and distributor from whom the purchase was made, transportation charges prepaid. Upon warranty approval proper credits will be reimbursed for transportation.

This warranty shall not be interpreted to render Ashland Industries Inc. liable for injury or damages of any kind or nature to person or property. This warranty does not extend to the loss revenue, extra labor cost associated with downtime, substitute machinery, rental or for any other reason.

Except as set forth above, Ashland Industries Inc. shall have no obligation or liability of any kind on account of any of its equipment and shall not be liable for special or consequential damages. Ashland Industries Inc. make no other warranty, expressed or implied, and, specifically, Ashland Industries Inc. disclaims any implied warrant or merchantability or fitness for a particular purpose. Some states or provinces do not permit limitations or exclusions of implied warranties or incidental or consequential damages, so the limitations or exclusion in this warranty may not apply.

This warranty is subject to any existing conditions of supply which may direct affect our ability to obtain materials or manufacture replacement parts.

Ashland Industries Inc. reserves the right to make improvements in design or changes in specifications at any time, without incurring any obligation to owners of units previously sold

No one is authorized to alter, Modify or enlarge this warranty nor the exclusion, limitations and reservations.

Ashland Industries Inc.
Warranty Department