

## I-175 XL2

### How to Order Parts



### HOW TO ORDER PARTS:

#### IMPORTANT

Parts must be ordered through your local authorized ASHLAND dealer.

Be sure to state MODEL and SERIAL NUMBER of your machine, PART NUMBER, DESCRIPTION and QUANTITY needed.



Unless this is done, we cannot provide prompt service or assure shipment of the correct parts.

Ashland Industries weldable replacement parts are available to rebuild, modify or update your scraper to current factory specifications.

# I-175 XL2

## Safety Guidelines



### SAFETY SIGNAL WORDS

Note the use of the signal words DANGER, WARNING and CAUTION with the safety messages. The appropriate signal word for each has been selected using the following guidelines:



**DANGER:** Indicates an imminently hazardous situation that, if not avoided, will result in death or serious injury.

This signal word is to be limited to the most extreme situations typically for machine components which, for functional purposes, cannot be guarded.



**WARNING:** Indicates a potentially hazardous situation that, if not avoided, could result in death or serious injury, and includes hazards that are exposed when guards are removed. It may also be used to alert against unsafe practices.



**CAUTION:** Indicates a potentially hazardous situation that, if not avoided, may result in minor or moderate injury. It may also be used to alert against unsafe practices.



### GENERAL SAFETY GUIDELINES

Safety of the operator is one of the main concerns in designing and developing a new piece of equipment. Designers and manufacturers build in as many safety features as possible. However, every year many accidents occur which could have been avoided by a few seconds of thought and a more careful approach to handling equipment. You, the operator, can avoid many accidents by observing the following precautions in this section. To avoid personal injury, study the following precautions and insist those working with you, or for you, follow them.

Replace any CAUTION, WARNING, DANGER or instruction safety decal that is not readable or is missing. Location of such decals is indicated in this booklet.

Do not attempt to operate this equipment under the influence of drugs or alcohol.

Review the safety instructions with all users annually.

This equipment is dangerous to children and persons unfamiliar with its operation. The operator should be a responsible adult familiar with farm machinery and trained in this equipment's operations. **Do not allow persons to operate or assemble this unit until they have read this manual and have developed a thorough understanding of the safety precautions and of how it works.**

To prevent injury or death, use a tractor equipped with a Roll Over Protective System (ROPS). Do not paint over, remove or deface any safety signs or warning decals on your equipment. Observe all safety signs and practice the instructions on them.

Never exceed the limits of a piece of machinery. If its ability to do a job, or to do so safely, is in question - **DON'T TRY IT.**

# I-175 XL2

## Operators and Maintenance Instructions

### OPERATORS AND MAINTENANCE INSTRUCTIONS

This scraper is a durable piece of equipment and with proper care will yield many years of trouble free operation. The scraper requires a power source with TWO 4 way (double acting) hydraulic control valves.

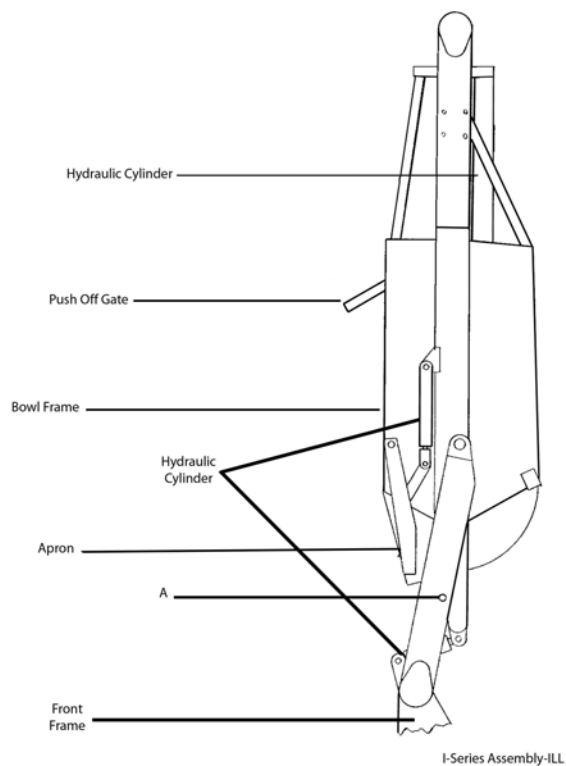
The scraper should be greased at all points where grease fittings are provided. Connect hydraulic hoses to the tractor and retract lift cylinders to **REMOVE TRANSPORT LOCK PINS** (point A), then extend and retract all cylinders several times to force out any air from the hydraulic cylinders and lines. Check the oil levels in the tractor hydraulic system and add to maintain the proper level. Care should be used when adding oil or when disconnecting any oil line to keep all dirt out of the oil as dirt is a major factor in the failure of hydraulic components.

When the scraper is placed into operation, the operator will have to "feel out" the amount of depth of cut to obtain maximum loading efficiency. This is usually accomplished by taking a lesser and more uniform cut; however, some soil conditions such as loose sand may require a "pumping action" obtained by taking successive deep cuts and lifting out of cut as the tractor begins to lose power or traction.

1. After 10 hours work, all bolts should be checked and tightened if necessary.
2. Every 10 hours all grease fittings should be lubricated.
3. After 50 hours work, all bolts should be rechecked and tightened if necessary. Check wheel bearings and adjust if necessary.
4. After 300 hours work, clean and repack wheel bearings and replace, if necessary, cutting edges, worn pins, etc.

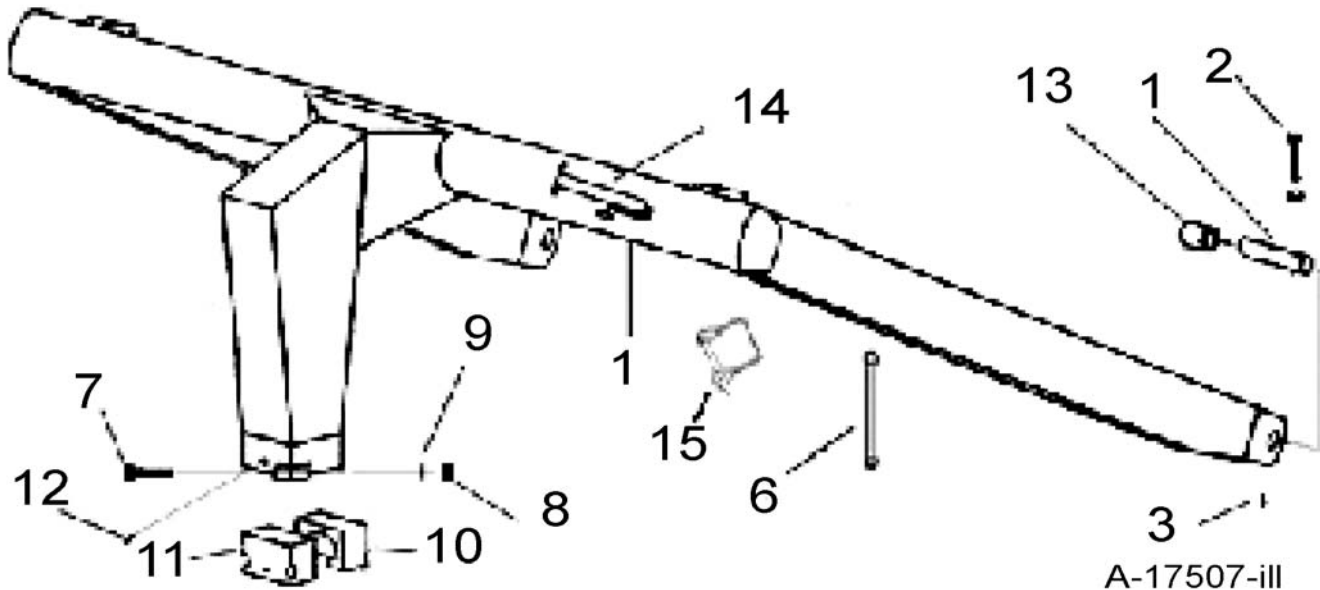
# I-175 XL2

## Assembly Illustration



# I-175 XL2

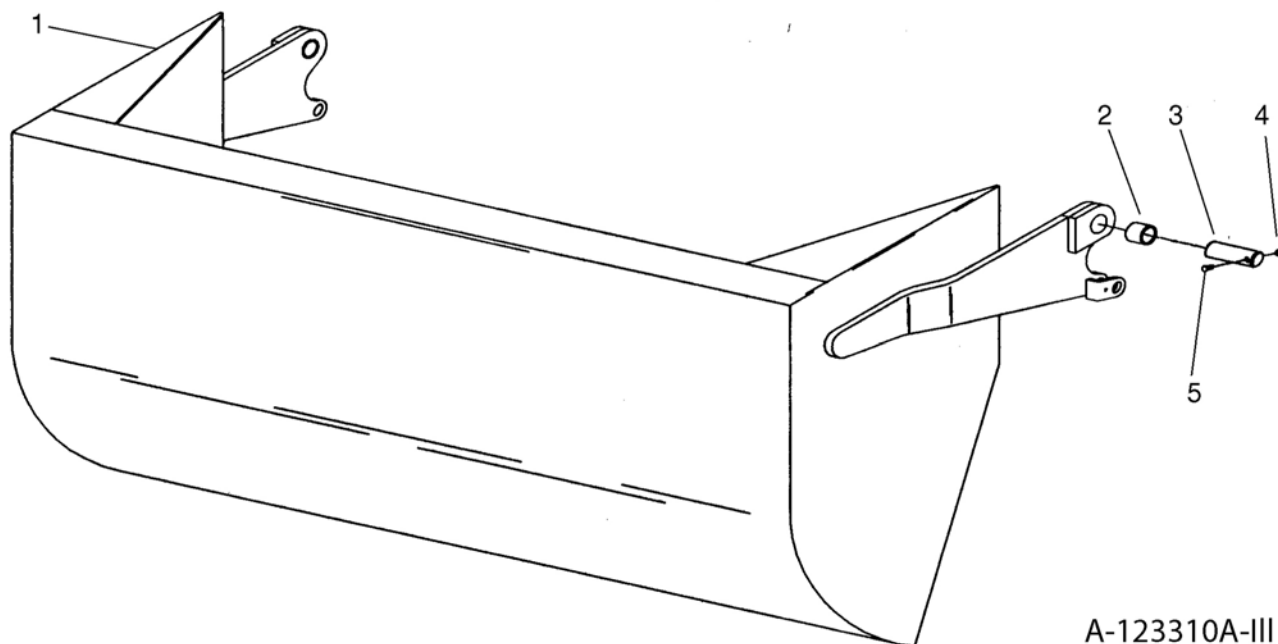
## Gooseneck Assembly



Key Number	Part Number	Description
1	A17507	Gooseneck Frame
2	AFB-00054	"Bolt, 1/2" NC x 3-1/2" Lg."
3	14505	Grease Zerk - Straight
4	A10152A	"Pin, Frame Attach"
6	A123230-20	Travel Lock
7	AFB-00022	"Bolt, 7/8"NF x 4-1/2" Lg. Grade 5"
8	7597	"Nut, 7/8"NF"
9	8125	Lockwasher 7/8"
10	A14002	Cast Socket Half - Rear
11	A14003	Cast Socket Half - Front w/Zerk Hole
12	A2206	Grease Zerk - Long Shank
13	A14039	"Bushing, 2-3/8" OD x 2" ID x 2" Long"
14	OPT-00001	Hitch Jack
15	A125006	Safety Link Pin

# I-175 XL2

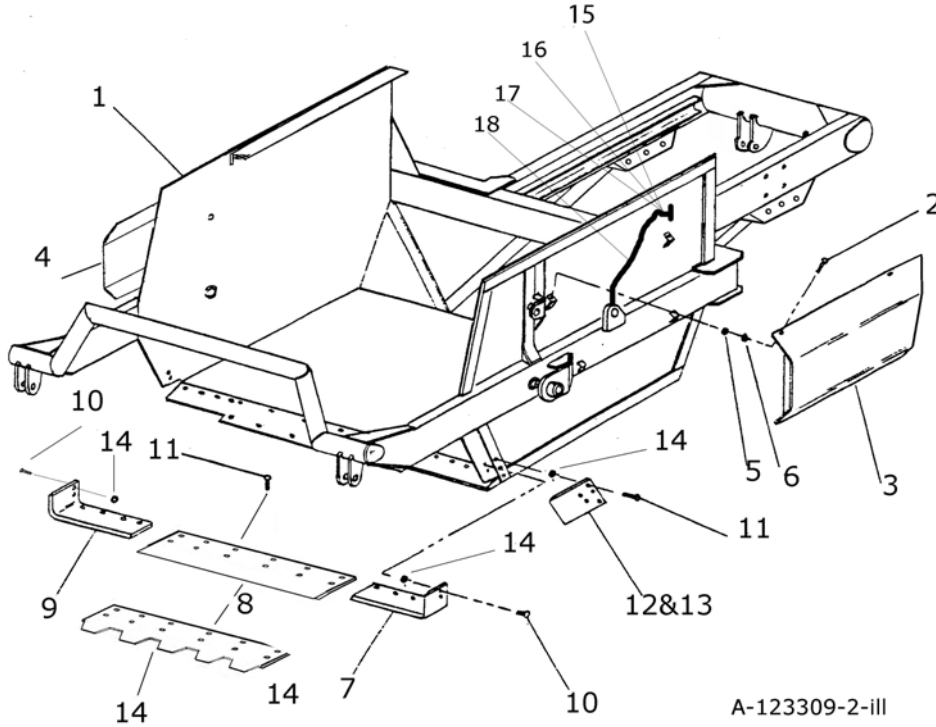
## Apron Assembly



Key Number	Part Number	Description	S N Break	Qty Required
1	A123228	Apron Model I-175XL	Used on S.N.20763 and above	1
1	A17505C	Apron Model I-175XL	Used up to S.N 20763	1
2	A16027	Bushing: 2" OD x 1-1/2" ID x 2" Long		
3	A123337	Pin: 1-1/2" x 5-3/8"		
4	7450	Nut: 3/8" NC		
5	AFB-00049	Bolt: 3/8" NC x 3"		

# I-175 XL2

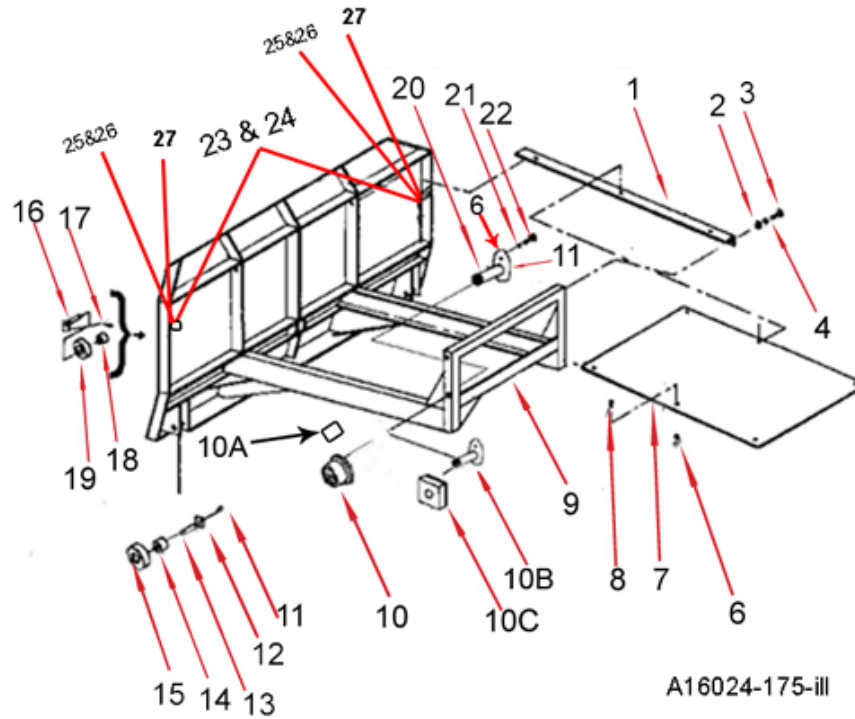
## Bowl & Frame Assembly



Key Number	Part Number	Description	S N Break	Qty Required
1	A17503	"Bowl and Frame, Model I-175XL2 w/Std. Tires"		
10	PB9P-NC-088-027	Plow Bolt: 7/8 NC X 2-3/4" -> 6 Required		
2	AFB-00094	Bolt: 3/8 NC X 1" Flange Bolt		
	A123309-62L	Cylinder Guard - Left Hand	Used on S.N. 20750 and above	
	A123309-77	Cylinder Guard - Left Hand		
3	A10157	Cylinder Guard - Left Hand	Used up to S.N. 20495	
	A123309-62R	Cylinder Guard - Right Hand	Used on S.N. 20750 and above	
4	A10158	Cylinder Guard - Right Hand	Used up to S.N. 20749	
7	A123332L	Left Cutting Edge		
8	A123330SER	"Center Cutting Edge, Serrated 1-1/8" x 12" x 63"		
	A123330	"Center Cutting Edge, Straight 1-1/8" x 12" x 63"		
9	A123332R	Right Cutting Edge		
11	AFB-0018	"Bolt, 1" NC x 3" long, (5 per Blade Required)"		
12	A123357	"Bank Shaver/router bit Reversible, L & R"		
13	AFN-00012	Nut: 1" NC (5 per Blade Required)		
14	AFN-00019	Nut: 7/8" NC -> 6 Required		
15	A125019	Grease fitting 1/4-28 x .54" long		1 per side
16	A125026	Bulkhead nut 1/8 n.p.s.m.		1 per side
17	A123309-89	Single hole tab		1 per side
18	A125022	18" Grease line		1 per side

# I-175 XL2

## Pushoff Assembly

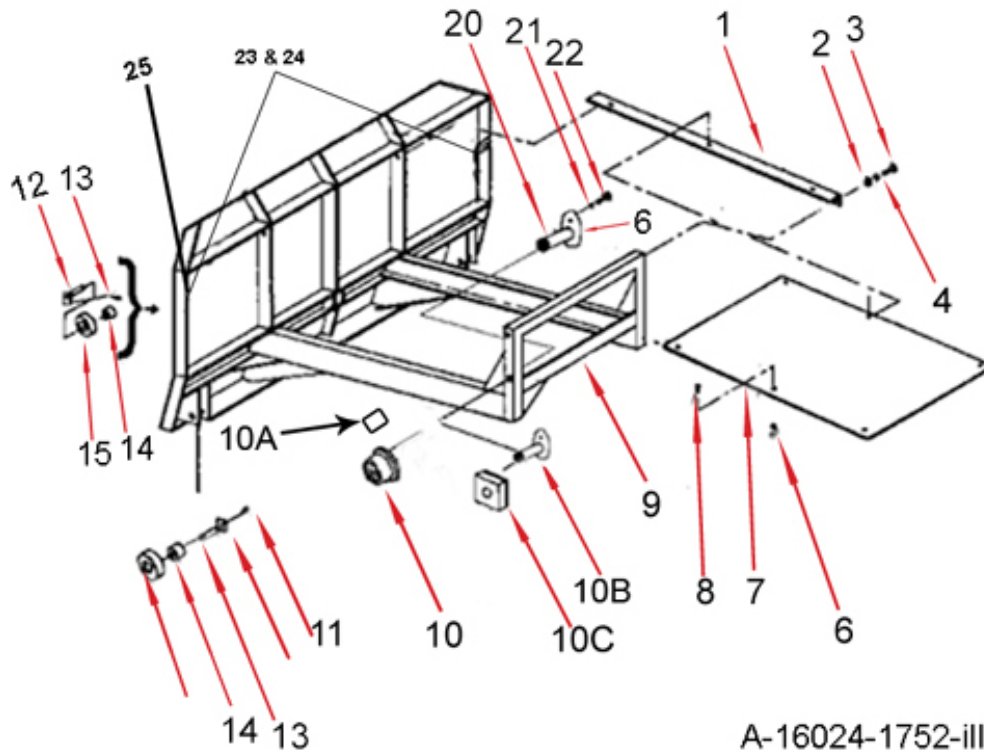


Key Number	Part Number	Description	S N Break
1	A14022	Brace	Used up to S.N. 21437
2	AFN-00006	Nut: 3/4" NC	Used up to S.N. 21437
3	AFB-00037	Bolt: 3/4" NC x 2" Lg.	Used up to S.N. 21437
4	AFW-00002	Lockwasher: 3/4"	Used up to S.N. 21437
5	8100	Lockwasher: 1/2"	Used up to S.N. 21437
6	AFN-00015	Nut 1/2" NC	Used up to S.N. 21437
7	A14023	Dirt Shield	Used up to S.N. 21437
8	AFB-00019	Bolt: 1/2" x 1-1/2" NC bolt	Used up to S.N. 21437
9	A17502	Pushoff Gate: Model I-175	Used up to S.N. 21437
10	A123306	Roller: Rear Gate (OPT'L)	Used up to S.N. 21437
10A	A123307	Bushing	Used up to S.N. 21437
10B	A123305A	Pin: 1-1/4" x 2-3/4"	Used up to S.N. 21437
10C	A123353	Wear Pad	Used up to S.N. 21437
11	AHF-00028	Grease Fitting: 1/8" NPT -90 degrees	Used up to S.N. 21437
12	A6007A	Pin:1-1/4" x 4-1/8" Lg.	Used up to S.N. 21437
13	AFP-00001	Cotter Pin: 1/4 x 3	Used up to S.N. 21437
14	A10163	Bushing: 1-3/4" OD x 1-1/4" ID	Used up to S.N. 21437
15	A10164	Roller 3-1/2 OD x 1-3/4 ID	Used up to S.N. 21437
16	A123288	Pin:1-1/4" x 3-1/4" Tab Head	Used up to S.N. 21437
17	7036	Bolt: 1/2 NC x 2"	Used up to S.N. 21437
18	A10163	Bushing: 1-3/4" OD x 1-1/4" ID	Used up to S.N. 21437
19	A10164	Roller 3-1/2 OD x 1-3/4 ID	Used up to S.N. 21437
20	A123305	Pin: 1-1/4 x 2-3/4" w/grease roller	Used up to S.N. 21437
21	8100	Lockwasher: 1/2"	Used up to S.N. 21437
22	AFB-00033	Bolt: 1/2 NC x 2-1/2"	Used up to S.N. 21437
23	A125020	32" grease line	Used up to S.N. 21437
24	A125021	54" greaseline	Used up to S.N. 21437
25	A125019	Grease Fitting 1/4 x 28.54 Long	Used up to S.N. 21437
26	A125026	Bulkhead Nut	Used up to S.N. 21437
27	A123323-40	Double Hole Tab	Used up to S.N. 21437



# I-175 XL2

## PushOff Assembly I-175 XL2

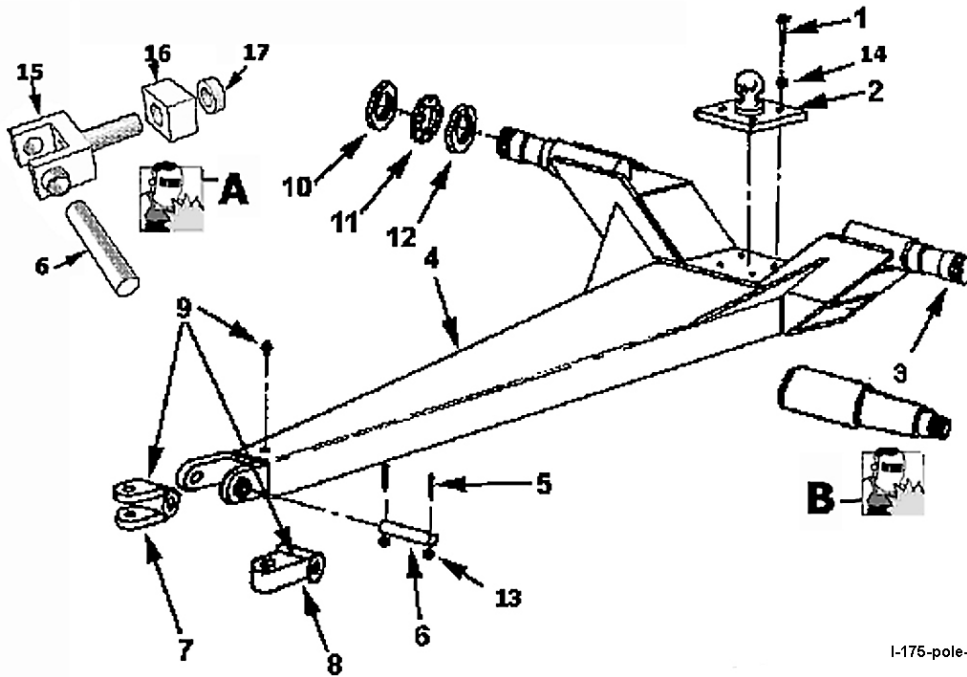


A-16024-1752-III

Key Number	Part Number	Description	Secondary Description	S N Break
1	A14022	Brace		Used on S.N. 21437 and above
2	AFN-00006	Nut: 3/4" NC		
3	AFB-00037	Bolt: 3/4" NC x 2" Lg.		
4	AFW-00002	Lockwasher: 3/4"		
5	8100	Lockwasher: 1/2"		
6	AFN-00015	Nut 1/2" NC		
7	A14023	Dirt Shield		
8	AFB-00015	Bolt: 1/2" x 1-1/2" NC bolt		
9	A17502	Pushoff Gate: Model I-175		
10	A123306	Roller: Rear Gate	Optional	
10A	A123307	Bushing		
10B	A123305A	Pin: 1-1/4" x 2-3/4"		
10C	A123353	Wear Pad		
11	AHF-00028	Grease Fitting: 1/8" NPT -90 degrees		
12	A6007A	Pin:1-1/4" x 4-1/8" Lg.		
13	AFP-00001	Cotter Pin: 1/4 x 3		
14	A10163	Bushing: 1-3/4" OD x 1-1/4" ID		
15	A123459	V-Roller 3-1/2 OD x 1-3/4 ID		
16	A12323-21	Pin:1-1/4" x 4-1/8" Tab Head		
17	A10163	Bushing: 1-3/4" OD x 1-1/4" ID		
18	A10164	Roller 3-1/2 OD x 1-3/4 ID		
19	A123305	Pin: 1-1/4 x 2-3/4" w/grease roller		
20	8100	Lockwasher: 1/2"		
21	AFB-00033	Bolt: 1/2 NC x 2-1/2"		
22	A125020	32" grease line		
23	A125021	54" greaseline		
24	A123323-40	Double Hole Tab		
25	A125026	Bulkhead Nut		
26	A125019	Grease Fitting 1/4 x 28.54 Long		

# I-175 XL2

## Pole & Axle Assembly

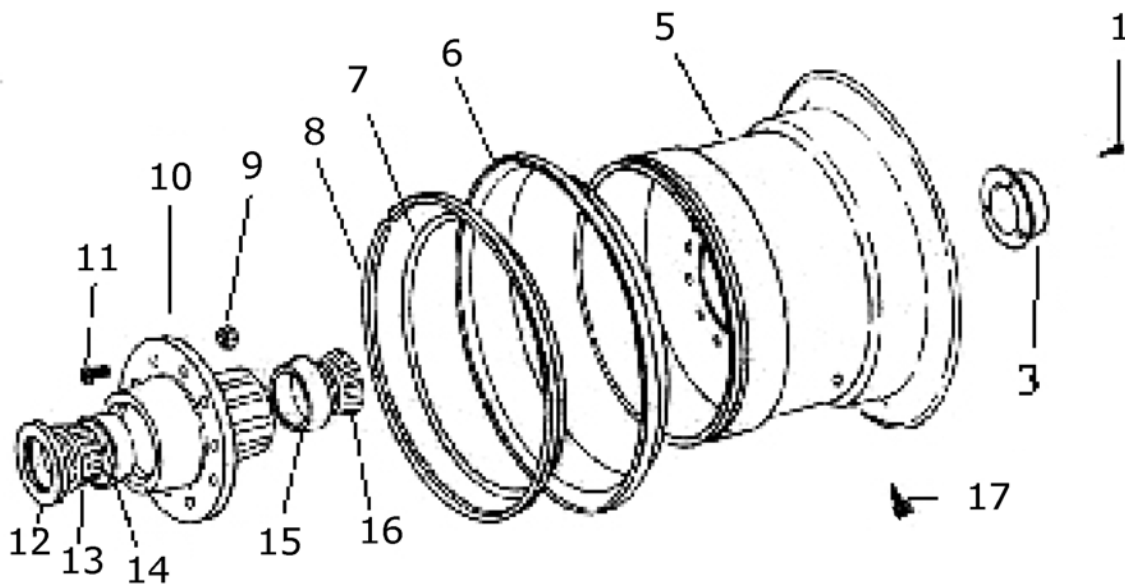


I-175-pole-III

Key Number	Part Number	Description	Secondary Description	S N Break
1	AFB-00018	Bolt 1" NC x 3" Long		
2	A14017	Ball Swivel		
3	A14021	"Spindle, Weld on Blank"		
4	A123375	Pole w/20.5 x 25 Tires	Optional	
4	A123422	Pole w/23.5 x 25 Tires	Optional	
5	AFB-00052	"Bolt, 5/16" x 3" Long"		
6	A14019	Pin 1-3/4" x 7-3/8" Long	Up to July 2003	
6	A123232-07	Pin 1-3/4" x 9" Long	After July 2003	
7	A17511	"Swivel Hitch, Double Lip"	Optional	
8	A17510	Swivel Hitch Single Lip		
9	14505	Grease Fitting		
10	A10048	Spindle Nut		
11	A10049A	Lock Collar		
12	A10172	Nut with Lock Pin		
13	7430	"Nut, 5/16" NC "		
14	AFW-00006	Lockwasher 1"		
	A123232	"Swivel Hitch Rebuild Kit, includes items 6,15,16,17"		
15	A123232-3	Hitch: Yoke assembly		
16	A123232-2A	Swivel Block 4x4x3		Used up to S.N. 17805
16	A123232-2	Swivel Block 4x6x3		Used on S.N. 17805 and above
17	A123232-1	Hitch: Retaining Collar		

# I-175 XL2

## Front Wheel & Hub Assembly

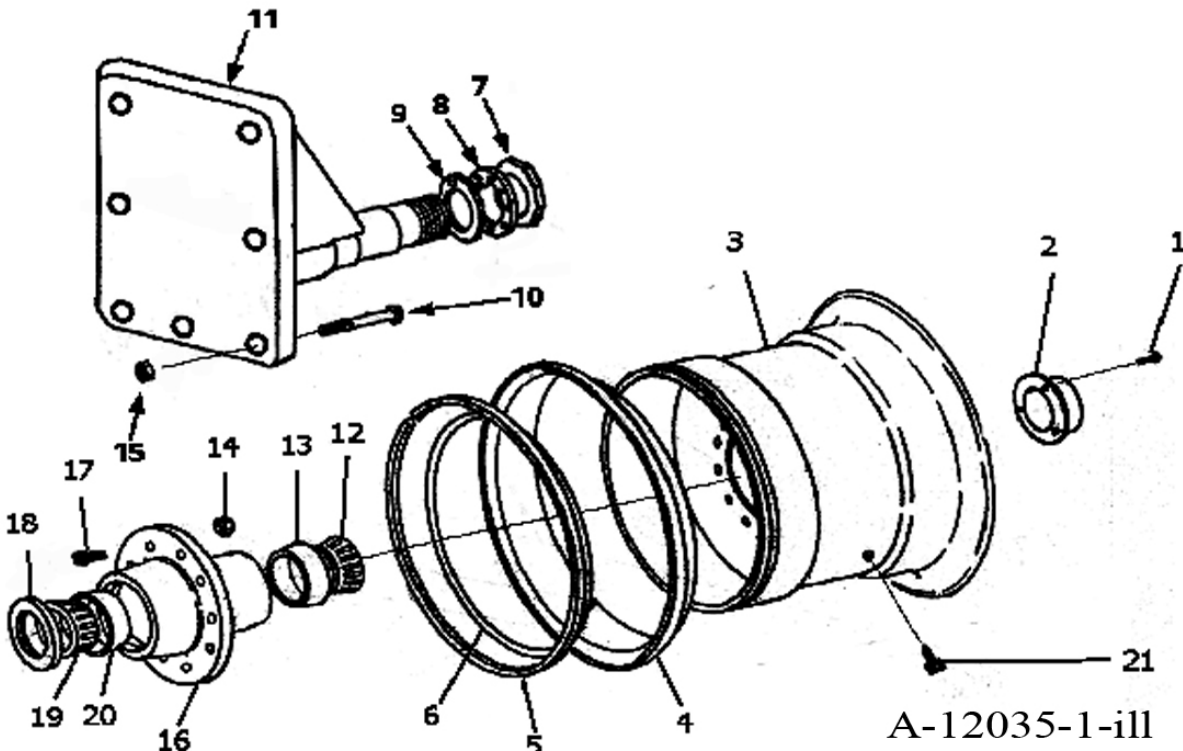


A-14004-2-ill

Key Number	Part Number	Description	Secondary Description
1	AFB-00080	Bolt 5/16" NC x 1/2"	
3	A14004	Hub Cap	
5	A14035	Wheel 17" x 25"	
6	A14036	Side Ring for 17" x 25" Wheel	
7	A14008	"O" Ring	
8	A14038	Lock Ring	
9	A10046	Lug Nut	
10	A14010	Hub	
11	A10176	Stud	
12	A14011	Grease Seal	CR 42624
13	A14012	Bearing Cone	Timken 749
14	A14013	Bearing Cup	Timken 742
15	A14014	Bearing Cup	Timken 632
16	A14015	Bearing Cone	Timken 644
17	A14016	Valve Stem	

# I-175 XL2

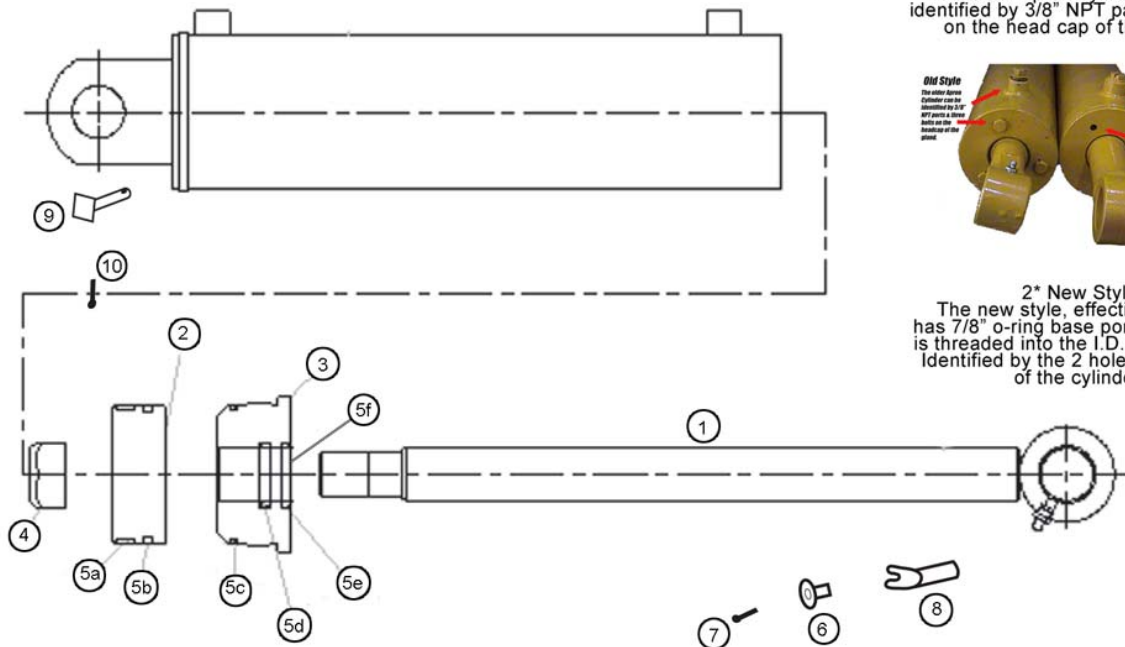
## Rear Wheel & Hub Assembly with 29.5 x 25 inch Tire



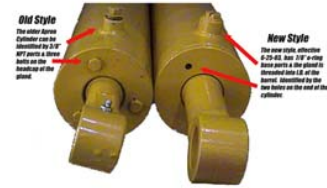
Key Number	Part Number	Description	Secondary Description
1	AFB-00082	Bolt 5/16" NC X 1/2" Lg.	
2	A14004	Hub Cap	
3	A12036	Wheel Ass'y. 25" x 25"	
3	A12036-1	"Center Dish Weldment, Flat"	
3	A12036-2	Six Gussets for Center Dish	
4	A12041	Side Ring	
5	A12042	Lock Ring	
6	A12047	O-Ring	
7	A10048	Spindle Nut	
8	A10049A	Lock Collar	
9	A10172	Nut with Lock Pin	
10	AFB-00067	Bolt 1-1/4" NF X 7-1/2" Lg.	
11	A123350	Spindle 5-3/4"	
12	A125001	Bearing Cone	Timken# H715348
13	A125002	Bearing Cup	Timken# H715311
14	A12051	Lug Nut	
15	AFN-00009	Lock Nut: 1-1/4" NF	
16	A12035	Hub	
17	A12050	Lug	
18	A12037	Grease Seal	National# 416039
19	A125003	Bearing Cup	Timken# HM624749
20	A125004	Bearing Cone	Timken# HM624710
21	A14016	Valve Stem	

# I-175 XL2

## Apron Cylinder 4 x 13



1\*Old Style  
The older apron cylinder can be identified by 3/8" NPT parts & 3 bolts on the head cap of the gland.

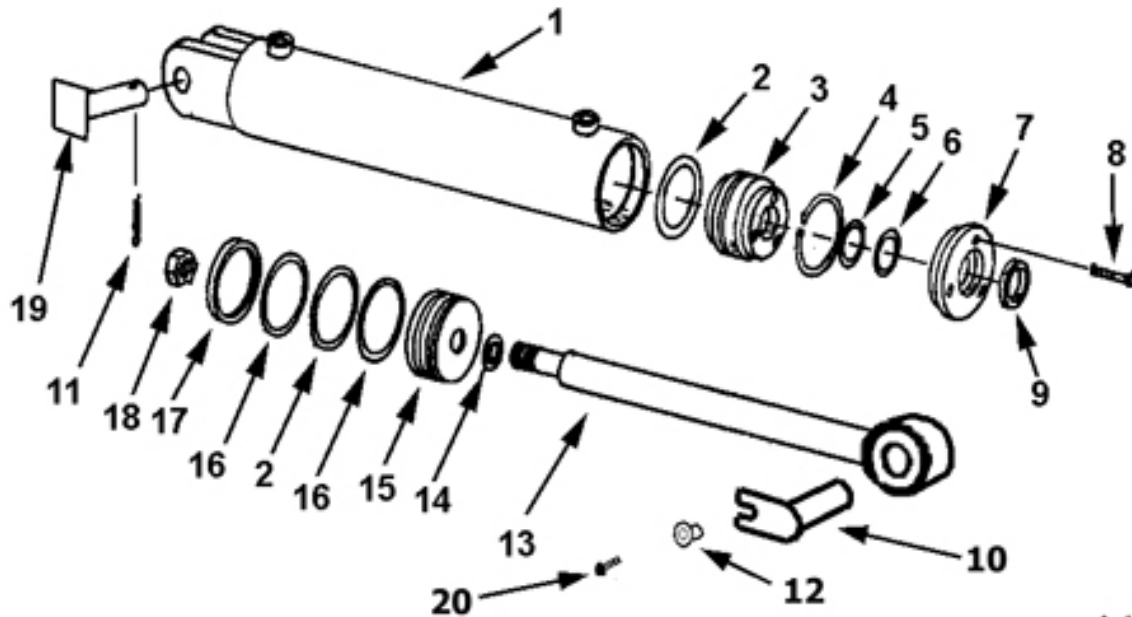


2\* New Style  
The new style, effective 6/25/03 has 7/8" o-ring base ports, the gland is threaded into the I.D. of the barrel. Identified by the 2 holes on the end of the cylinder.

### A-125050-III

Key Number	Part Number	Description	S N Break
1	A125050-01	Rod 1-3/4" with welded eye	Used on S.N. 20750 and above
2	A125050-02	Piston	Used on S.N. 20750 and above
3	A125050-03	"Gland, Threaded "	Used on S.N. 20750 and above
4	A125050-04	"Lock Nut, 1-1/8" NF"	Used on S.N. 20750 and above
5	A125050-05	"Seal Kit, a-f"	Used on S.N. 20750 and above
5a	A125050-05a	Nylon Wear Ring	Used on S.N. 20750 and above
5b	A125050-05b	FSP Seal	Used on S.N. 20750 and above
5c	A125050-05c	O-Ring	Used on S.N. 20750 and above
5d	A125050-05d	Backup Washer	Used on S.N. 20750 and above
5e	A125050-05e	Hallite Rod Seal	Used on S.N. 20750 and above
5f	A125050-05f	Snap-in Rod Wiper	Used on S.N. 20750 and above
6	A123351	"Bushing, Retaining Flange 9/16 ID x 3/4 OD, 3/4 Lg."	Used on S.N. 20750 and above
7	AFB-00015	"HHCS 1/2"NC x 1-1/2" Bolt, Gr. 8"	Used on S.N. 20750 and above
8	A123362	"Pin, 1-1/2" with slot for keeper bushing"	Used on S.N. 20750 and above
9	A123363	Pin: 1-1/2" square head	Used on S.N. 20750 and above
10	8602	"Pin, Cotter 1/4" x 2" Zinc"	Used on S.N. 20750 and above

# Left & Right Side Apron Cylinder 4 x 13



A-123365

(1) A300H04	(1) A45H05
(1) A22H15	(1) A22H17
(1) A22H15A	(2) A300H06
(2) A300H05	

Key Number	Part Number	Description	Secondary Description	Note
1	A123365-05	Cylinder Barrel		Some units prior to this serial number were upgraded to a H.D. Apron Cylinder by the customer. Please determine if the cylinder pins are 1-1/2" diameter. If pins are 1" or 1-1/4" and is inserted into a thread block ear on the rod end please refer to previous page.
2	A300H06	O-Ring: 4" OD x 3/16"		
3	A300H11	Head Gland		
4	A300H12	Retainer Ring		
5	A22H15	O-Ring: 1-1/2" ID x 1/8"		
6	A22H15A	Backup Washer: 1-1/2"		
7	A300H13	Gland Cap		
8	A22H18	Capscrew: 1/4" NC x 1"		
9	A22H17	Wiper Seal: 1-1/2" ID		
10	A123362	"Pin, 1-1/2" with slot for keeper bushing"		
11	8602	"Pin, Cotter 1/4" x 2" Zinc"		
12	A123351	"Bushing, retaining flange, 9/16" ID x 3/4" OD, 3/4" L"		
13	A123367	"Rod, S/N 20497 + Welded Eye with 1-1/2" Hole"		

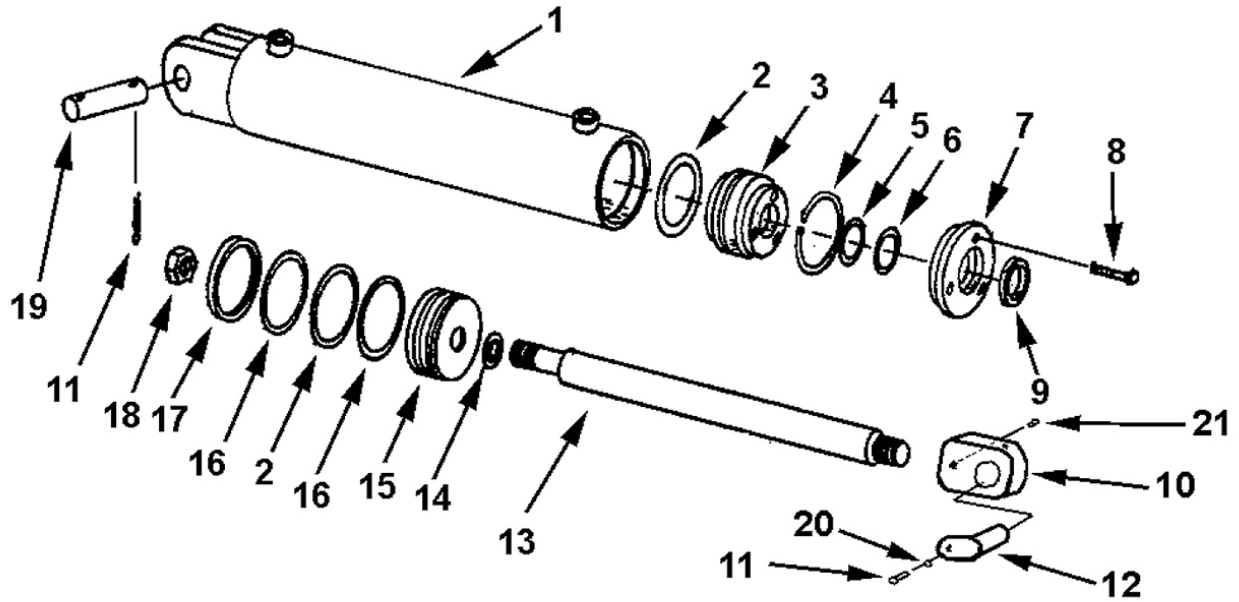
# I-175 XL2

## Left & Right Side Apron Cylinder 4 x 13

Key Number	Part Number	Description	Secondary Description	Note
14	A45H05	Piston Gasket: 1"	** If your unit has thread block type rod end see following page **	
15	A300H07	Piston: 4" Dia.	** If your unit has thread block type rod end see following page **	
16	A300H05	Backup Washer: 4" OD	** If your unit has thread block type rod end see following page **	
17	A300H04	Cast Iron Ring: 4" OD	** If your unit has thread block type rod end see following page **	
18	A300H03	"Piston Nut, 1" NF"	** If your unit has thread block type rod end see following page **	
19	A123363	Pin: 1-1/2" square head	** If your unit has thread block type rod end see following page **	
20	AFB-00015	HHCS 1/2"NC x 1-1/2" Gr. 8	** If your unit has thread block type rod end see following page **	
	A300H14B	"Packing Kit, Containing: * See note*"	** If your unit has thread block type rod end see following page **	

# I-175 XL2

## Apron Circuit 4 x 13



A-123319-ILL

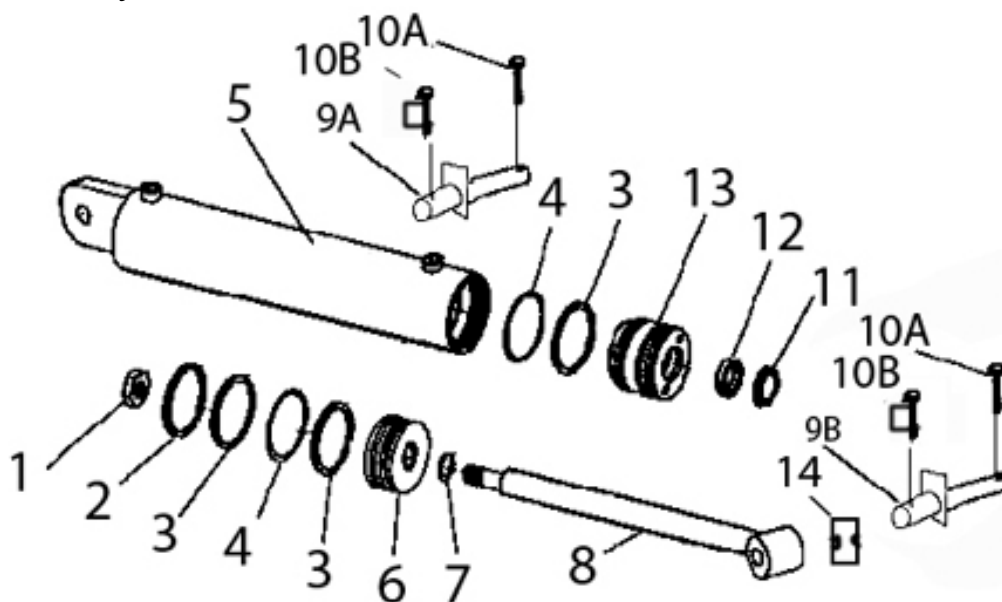
(1) A300H04	(1) A45H05
(1) A22H15	(1) A22H17
(1) A22H15A	(2) A300H06
(2) A300H05	

Key Number	Part Number	Description
2	A300H06	"O-ring seal, 4" OD x 3/16"
3	A300H11	Head gland
4	A300H12	Retainer ring
5	A22H15	"O-ring, 1-1/2" x 1/8" "
6	A22H15A	Backup washer
7	A300H13	Head cap
8	A22H18	"Capscrew, 1/4 NC x 1"
10	A123345	"Block type apron cyl., rod end cyl. 1"
1	A175H01	Barrel Assembly
11	A123351	Pin keeper bushing
9	A22H17	"Wiper seal, 1-1/2" ID"
12	A123336	Pin: Tab Head
13	A175H02	"Shaft, 1-1/2" diameter"
14	A45H05	"Piston gasket, 1"
15	A300H07	"Piston, 4" dia."
16	A300H05	"Back up washer, 4" OD"
17	A300H04	"Cast iron ring, 4" OD"
18	A300H03	"Piston nut, 1" NF"
19	A1217E	"Pin, 1" x 3-1/2" w/tab head"
20	8602	Cotter pin
21	AFB-00062	Allen set screws
22	14505	Grease fitting
23	AFB-00015	"Bolt, 1/2" x 1-1/2" NC"
	A300H14B	"Packing Kit, Containing: * See note*"



# I-175 XL2

## Hydraulic Lift Cylinder 5 X 20

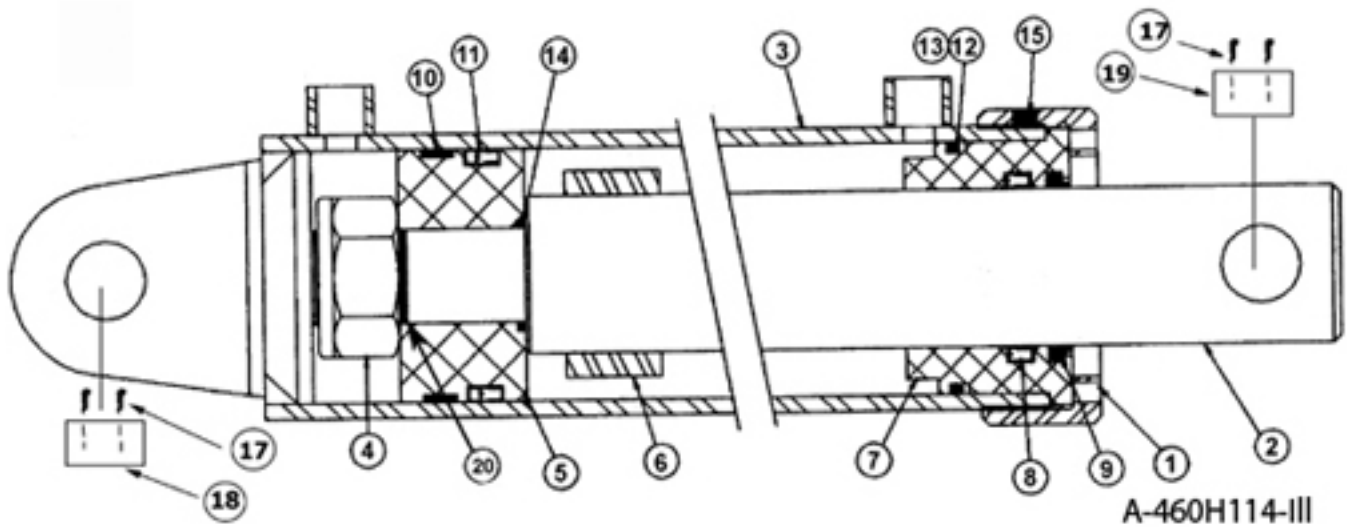


A-520h275-ill

(1) A400H04	(1) A60H52
(3) A400H05	(1) A80H04
(2) A400H06	(1) A80H06

Key Number	Part Number	Description
1	A400H17	"Nut 1-1/4" NF, Lock Type"
2	A400H04	"Cast Ring, 5" OD"
3	A400H05	"Back-up Washer, 5" OD x 1/4"
4	A400H06	"O" Ring, 5" OD x 1/4"
5	A80H35	Barrel Assembly with 2" holes
6	A80H01	"Piston, 5" OD"
7	A60H52	"O" Ring, 1-1/4" OD x 1/16"
8	A80H32	Shaft 2" Dia.
9A.	A123372	"Pin, upper"
9B.	A123335	"Pin, lower"
10A.	AFP-00001	"Cotter Pin, 1/4" x 3"
10B.	A125006	SafetySnap Pin
11	A80H06	Wiper Seal 2" ID
12	A80H04	Seal 2" ID
13	A80H05A	Head Gland
	A80H07	"Packing Kit, Containing: * See note*"

# Pushgate Cylinder



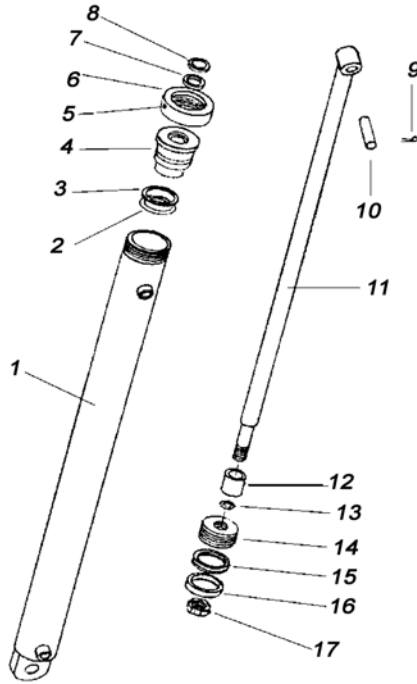
Key Number	Part Number	Description	S N Break	Qty Required
1	A123360-01	BARREL	Used on S.N. 21238 and above	1
2	A123360-02	ROD	Used on S.N. 21238 and above	1
3	A123360-03	PISTON	Used on S.N. 21238 and above	1
4	A123360-04	GLAND	Used on S.N. 21238 and above	1
5	A123360-05	LOCK NUT	Used on S.N. 21238 and above	1
6	A123360-06	SCREW	Used on S.N. 21238 and above	1
7	A123360-07	SPACER SLEEVE	Used on S.N. 21238 and above	1
8	A123360-08	PISTON SEAL	Used on S.N. 21238 and above	1
9	A123360-09	WEAR RING	Used on S.N. 21238 and above	1
10	A123360-10	O-RING	Used on S.N. 21238 and above	1
11	A123360-11	WEAR RING	Used on S.N. 21238 and above	1
12	A123360-12	ROD SEAL	Used on S.N. 21238 and above	1
13	A123360-13	WIPER	Used on S.N. 21238 and above	1
14	A123360-14	O-RING	Used on S.N. 21238 and above	1
15	A123360-15	BACK-UP RING	Used on S.N. 21238 and above	1
16	A123360-16	"SEAL KIT, INCLUDES ITEMS 8 - 15"	Used on S.N. 21238 and above	1

# I-175 XL2

## Pushgate Cylinder

Key Number	Part Number	Description	S N Break	Qty Required
17	A123323-38	Rod End Pin 5-1/16 x 1-1/2	Used on S.N. 21238 and above	2
18	A123323-41	Barrel End Pin 4-9/16 x 1-1/2	Used on S.N. 21238 and above	2
19	AFP-00001	1/4 x 3 Cotter Pin	Used on S.N. 21238 and above	8

## Pushoff Cylinder 4.5 x 60 inch

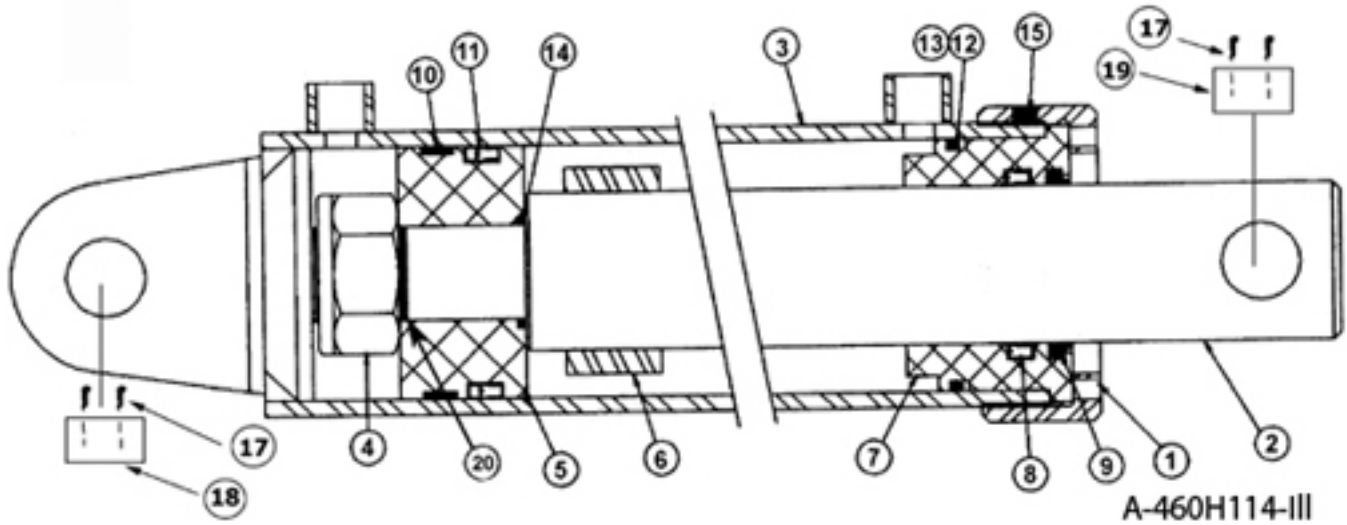


A-4560h114-ill

Key Number	Part Number	Description	S N Break
1	A175H08	"Barrel Assembly, 4-1/2" Bore"	Used up to 21237
2	A175H03	"O" Ring, 4-1/2" OD x 4-1/8" ID"	Used up to 21237
3	A175H04	"Back Up Washer, 4-1/2" OD x 4-1/8" ID"	Used up to 21237
4	A175H09	Head Gland	Used up to 21237
5	----	"Set Screw, 3/8" NC"	Used up to 21237
6	A175H10	Collar	Used up to 21237
7	A140H07	"Shaft Seal, 2-1/2" ID, OU-Cup"	Used up to 21237
8	A140H08	Wiper Seal	Used up to 21237
9	AFP-00001	"Cotter Pin, 1/4" x 3"	Used up to 21237
10	A10038	"Pin, 1-1/4" Dia. x 4-1/4" Lg."	Used up to 21237
11	A175H11	"Shaft, 2-1/2" Dia."	Used up to 21237
12	A175H06	Spacer	Used up to 21237
13	A22H15	"O" Ring, 1-1/2" x 1-3/4" OD"	Used up to 21237
14	A175H12	Piston	Used up to 21237
15	A175H05	"Piston Seal, 4-1/2" OD"	Used up to 21237
16	A175H07	"Wear Ring, 4-1/2" OD"	Used up to 21237
17	AFN-00018	"Nut, Lock Type, 1-1/2" NF"	Used up to 21237
	A175H15	"Packing Kit, Containing: * See note*"	Used up to 21237

# I-175 XL2

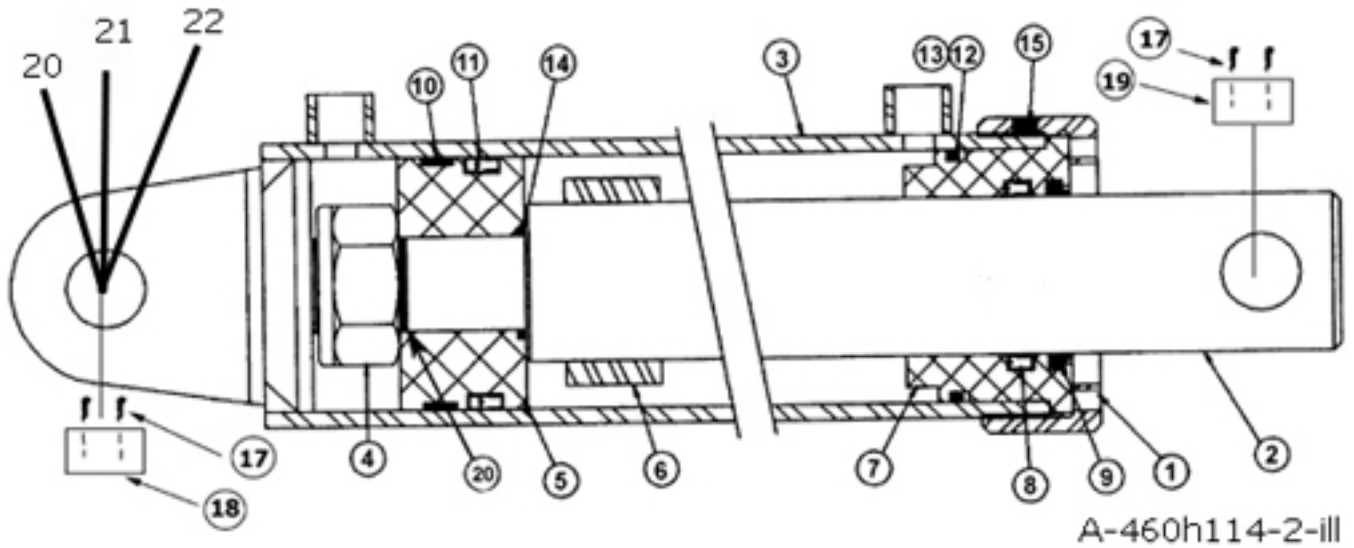
## Pushgate Cylinder 4 X 60 inch



Key Number	Part Number	Description	S N Break	Qty Required
1	A101H103	Collar	Used up to S.N. 21237	
2	A175H11	2 1/2" Rod	Used up to S.N. 21237	
3	A160H02	Barrel weldment	Used up to S.N. 21237	
4	AFN-00018	Lock nut (1-1/2" - 12)	Used up to S.N. 21237	
5	A101H96	Piston	Used up to S.N. 21237	
6	A175H06	"Spacer, 3-1/2"	Used up to S.N. 21237	
7	A101H102	Head	Used up to S.N. 21237	
8	A140H07	Rod seal	Used up to S.N. 21237	
9	A140H08	Rod wiper	Used up to S.N. 21237	
10	A101H100	Wear ring	Used up to S.N. 21237	
11	A101H101	Piston seal	Used up to S.N. 21237	
12	A300H06	O-ring	Used up to S.N. 21237	
13	A300H05	Backup ring	Used up to S.N. 21237	
14	A101H26	O-ring	Used up to S.N. 21237	
15	AFB-00061	Nylon tip set screw (3/8" NC x 3/8)	Used up to S.N. 21237	
16	A160H04	Seal kit (Items 8-14)	Used up to S.N. 21237	
17	8602	"Cotter pin, 1/4" x 2"	Used up to S.N. 21237	
18	A9024	"Pin, 1-1/4" diameter x 4-3/4" long"	Used up to S.N. 21237	
19	A14033	"Pin, 1-1/4" diameter x 5" long"	Used up to S.N. 21237	
20	A123427	"Washer, 1-1/2" ID, 2-3/4" OD, 3/4" Long"	Used up to S.N. 21237	
21	A125178-35	Bushing	Used up to S.N. 21237	1

# I-175 XL2

## Pushgate Cylinder 4 X 60 inch A460H114



Key Number	Part Number	Description	Qty Required
1	A123360-01	BARREL	1
2	A123360-02	ROD	1
3	A123360-03	PISTON	1
4	A123360-04	GLAND	1
5	A123360-05	LOCK NUT	1
6	A123360-06	SCREW	1
7	A123360-07	SPACER SLEEVE	1
8	A123360-08	PISTON SEAL	1
9	A123360-09	WEAR RING	1
10	A123360-10	O-RING	1
11	A123360-11	WEAR RING	1
12	A123360-12	ROD SEAL	1
13	A123360-13	WIPER	1
14	A123360-14	O-RING	1
15	A123360-15	BACK-UP RING	1
16	A123360-16	"SEAL KIT, INCLUDES ITEMS 8 - 15"	1
17	A123323-38	Rod End Pin 5-1/16 x 1-1/2	1
18	A123323-41	Barrel End Pin 4-9/16 x 1-1/2	1
19	AFP-00001	1/4 x 3 Cotter Pin	4
20	A125178-35	Bushing	1
21	A125178-36	Retaining Ring	1
22	14505	Grease Fitting	

# I-175 XL2

## Hydraulic Valve Identification



Visually there are several things you can check to ensure you have the correct valve. The new valve (item #1) is 6" wide whereas the older valve (Item #3) was 5" wide. The new valve utilizes a unload cartridge that sticks outward on the side of the valve.