



_ HOW TO ORDER PARTS:

IMPORTANT

Be sure to state Model and Serial Number of your machine, part number, description and quantity needed.

Unless this is done, we cannot provide prompt service or assure shipment of correct parts.

INDEX

Page 1.	Illustration - Assembly
Page 2.	Operators and Maintenance Instructions
Page 3.	Illustration - Gooseneck Frame Assembly
Page 4.	Illustration - Apron Assembly
Page 5.	Illustration - Bowl and Frame Assembly
Page 6.	Parts List - Bowl and Frame
Page 7.	Illustration and Parts List - Push Off Gate Assembly
Page 8.	Illustration and Parts List - Pole and Axle Assembly
Page 9.	Illustration and Parts List - Front Wheel and Hub Assembly
Page 10.	Illustration and Parts List - Rear Wheel and Hub Assembly
Page 11.	Illustration and Parts List - Hydraulic Cylinder 4" x 13"
Page 12.	Illustration and Parts List - Hydraulic Cylinder 4" x 13"
Page 13.	Illustration and Parts List - Hydraulic Cylinder 5" x 20"
Page 14.	Blank Page
Page 15.	Illustration - Hydraulic Cylinder 4-1/2" x 60"
Page 16.	Parts List - Hydraulic Cylinder 4-1/2" x 60"
Page 17.	Illustration - Hydraulic Circuit
Page 18.	Parts List - Hydraulic Circuit
Page 19.	Illustration and Parts List - Hydraulic Valve
Page 20.	Counterbalance Valve

OPERATORS AND MAINTENANCE INSTRUCTIONS

The scraper is a durable piece of equipment and with proper care will yield many years of trouble free operation. The scraper requires a power source with TWO 4 way (double acting) hydraulic control valves.

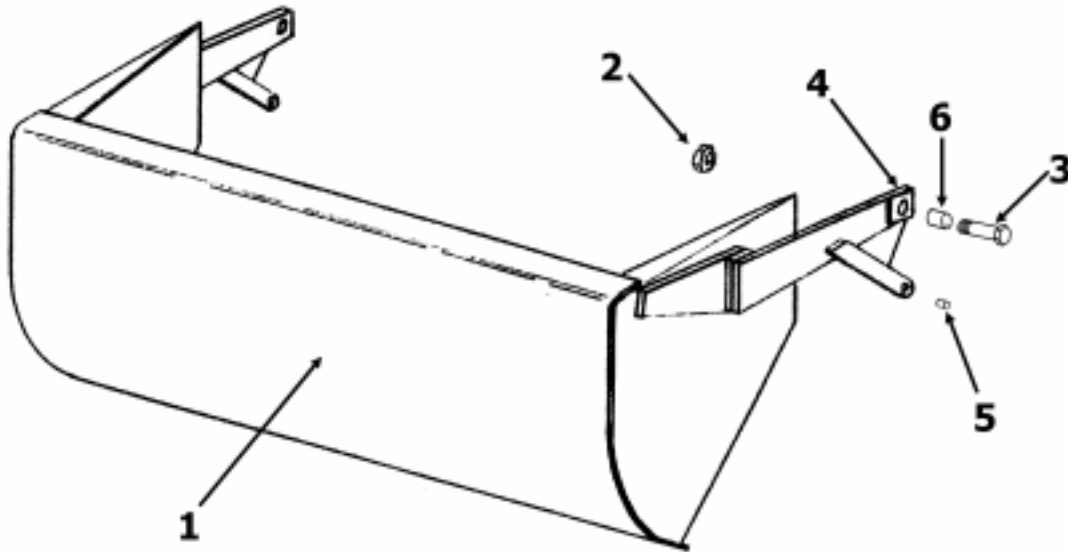
The scraper should be greased at all points where grease fittings are provided. Connect hydraulic hoses to the tractor and retract lift cylinders to remove transport lock pins (point A), then extend and retract all cylinders several times to force out any air from the hydraulic cylinders and lines. Check the oil levels in the tractor hydraulic system and add to maintain the proper level. Care should be used when adding oil or when disconnecting any oil line to keep all dirt out of the oil as dirt is a major factor in the failure of hydraulic components.

When the scraper is placed into operation, the operator will have to "feel out" the amount of depth of cut to obtain maximum loading efficiency. This is usually accomplished by taking a lesser and more uniform cut. However, some soil conditions such as loose sand may require a "pumping action" obtained by taking successive deep cuts and lifting out of cut as the tractor begins to lose power or traction.

1. After 10 hours work, all bolts should be checked and tightened if necessary.
2. Every 10 hours all grease fittings should be lubricated.
3. After 50 hours work, all bolts should be rechecked and tightened if necessary. Check wheel bearings and adjust if necessary.
4. After 300 hours work, clean and repack wheel bearings and replace, if necessary, cutting edges, worn pins, etc.



APRON ASSEMBLY



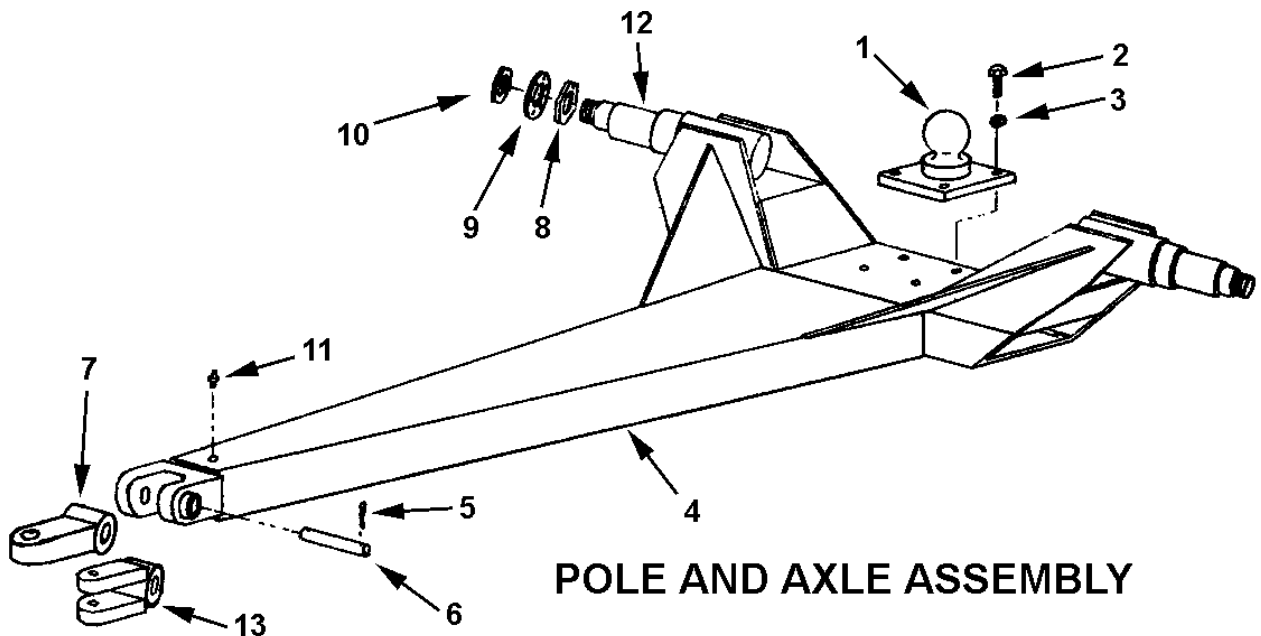
PARTS LIST APRON ASSEMBLY MODEL I-175

KEY NO.	PART NO.	DESCRIPTION
1.	A17505A	Apron
	A17505B	Apron Model, s/n 17719 & up
2.	AFN-00018	Self Lock Nut, 1-1/2" NF
3.	A17506A	Shoulder Pin, 2-1/4" x 1-1/2", w/ zerk in head
	-----	Bolt, 1-1/2"NF x 6" Lg., for s/n 17719 & up
4.	14505	Grease Fitting, 1/8" NPT
5.	A10155	Bushing, 1-1/2" OD x 1" ID x 1" Lg.
6.	A16027	Bushing, 2" OD x 1-1/2" ID x 2" Lg.

PARTS LIST
BOWL and FRAME ASSEMBLY

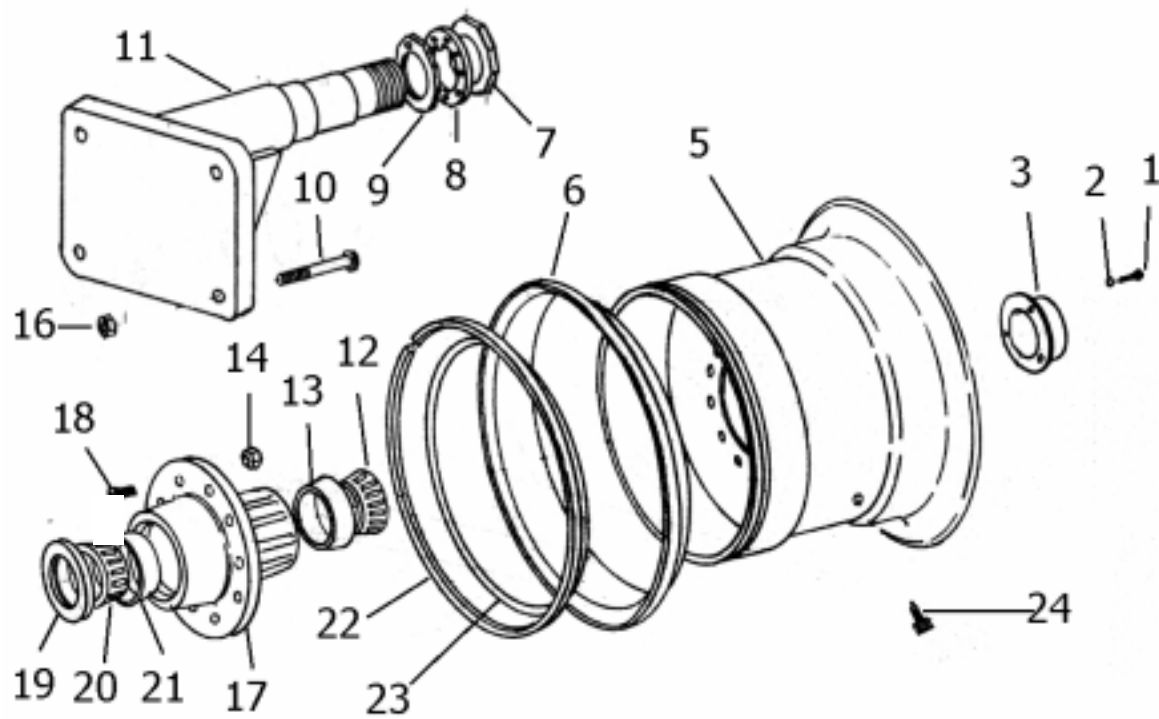
KEY NO.	PART NO.	MODEL I -175 SCRAPER DESCRIPTION
1.	A17503A A17503B	Bowl and Frame Bowl and Frame, s/n 17719 & up
2.	7115	Capscrew 5/8"NC x 1-1/4" Lg.
3.	8110	Lockwasher 5/8"
4.	A17504	Gate Containment Angle
5.	6835	Bolt 3/8"NC x 1" Lg.
6.	A10157	Cylinder Guard - Left Hand
7.	A10158	Cylinder Guard - Right Hand
8.	7450	Nut 3/8" NC
9.	8078	Lockwasher 3/8"
10.	A10011A	Left Cutting Edge
11.	A14029	Center Cutting Edge
12.	A10010A	Right Cutting Edge
13.	PB8P-NC-063-0250	Plow Bolt 5/8"NC x 2-1/2" Lg.
14.	A14031	Left Shaver Bit
	A14031A	Left Shaver Bit, after s/n 17580
15.	A14032	Right Shaver Bit
	A14032A	Right Shaver Bit, after s/n 17580

POLE and AXLE ASSEMBLY

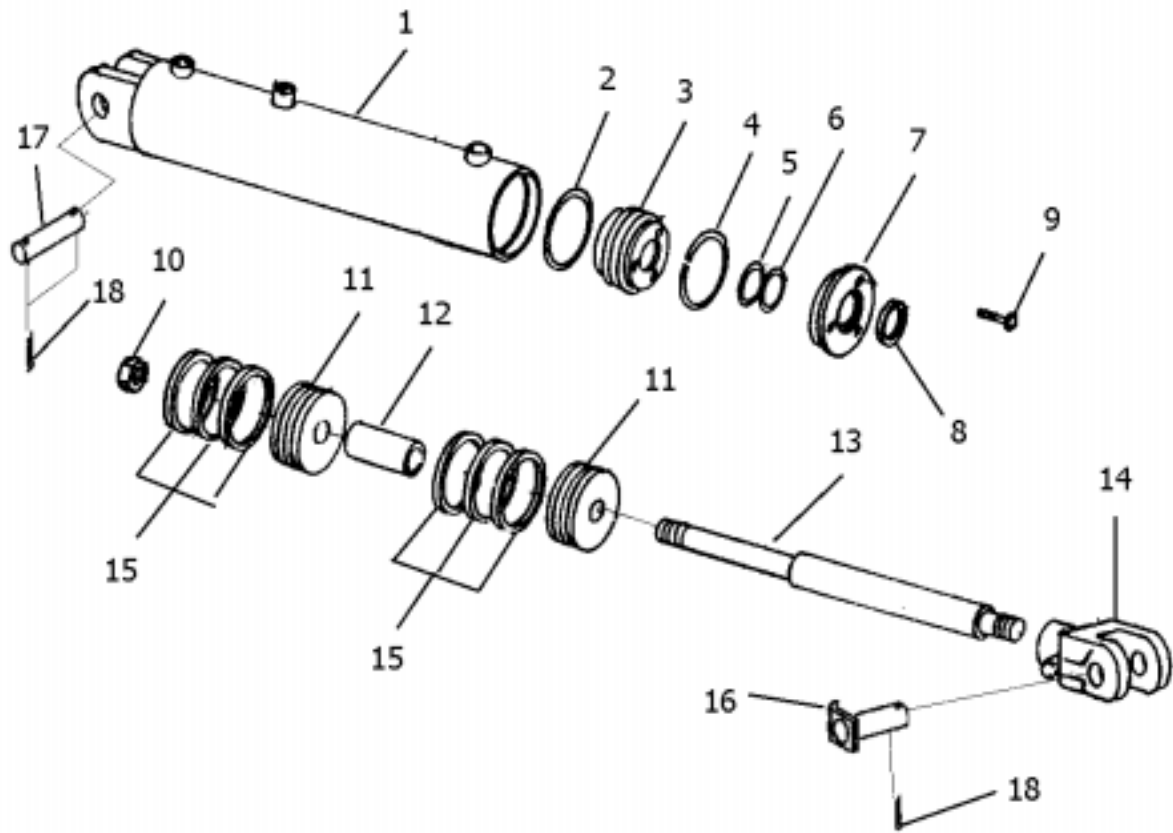


PARTS LIST
POLE and AXLE ASSEMBLY
MODEL I-175

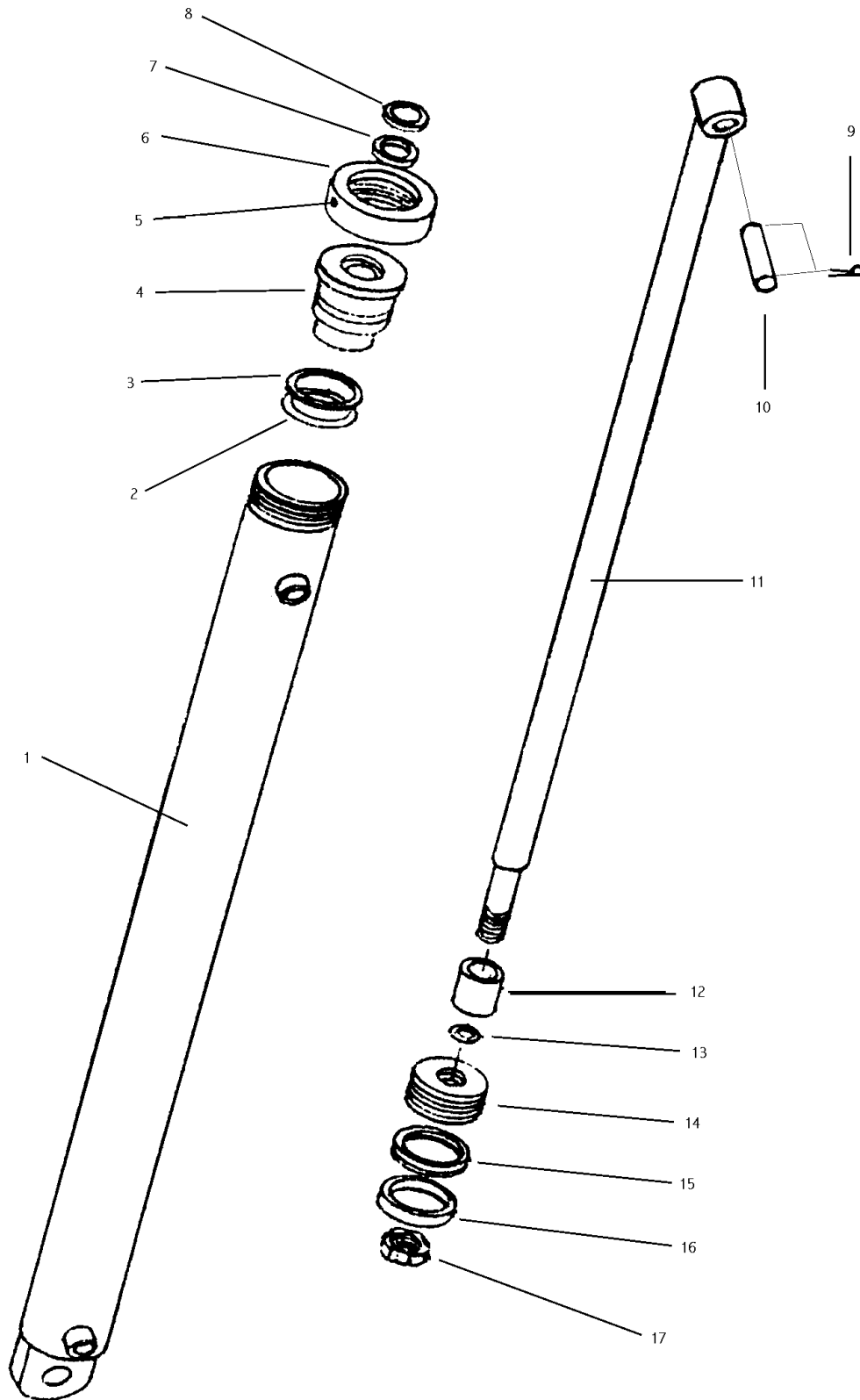
KEY NO.	PART NO.	DESCRIPTION
1.	A14017	Ball Swivel
2.	AFB-00018	Bolt 1" NC x 3" Long
3.	AFW-00006	Lockwasher 1"
4.	A17501	Pole
5.	AFB-00052	Bolt, 5/16" x 3" Long
	AFN-00016	Nut: 5/16" NC
6.	A14019	Pin 1-3/4" x 7-3/8" Long
7.	A17510	Swivel Hitch Single Lip
8.	A10172	Nut with Lock Pin
9.	A10049A	Lock Collar
10.	A10048	Spindle Nut
11.	14505	Grease Fitting
12.	A14021	Spindle (weld on)
13.	A17511	Swivel Hitch, Double Lip (optional)

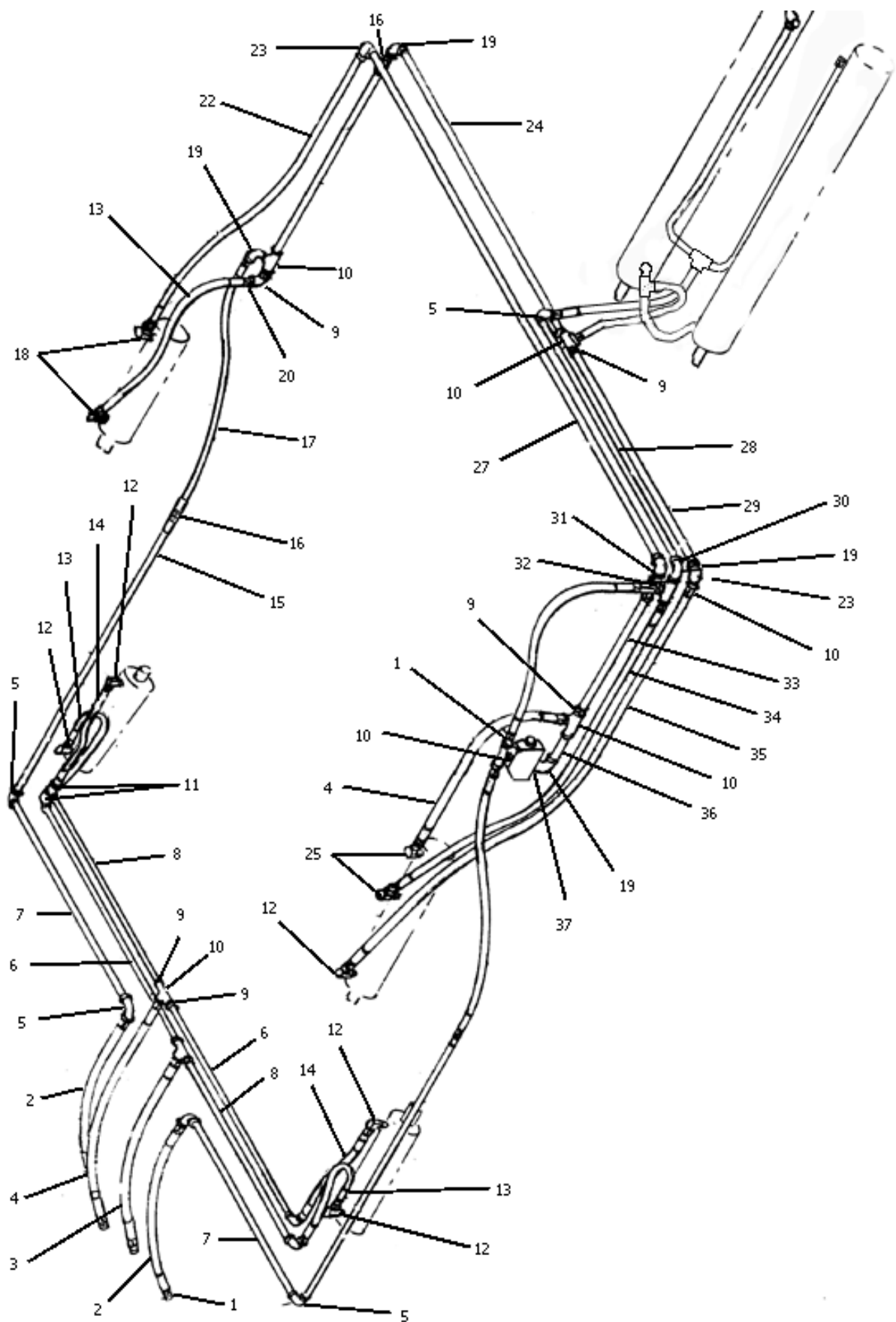


- | | | |
|----|-----------|--------------------------|
| | | |
| 1. | AFB-00020 | Bolt 5/16" NC x 3/4" Lg. |
| 2. | 8070 | Lockwasher 5/16" |

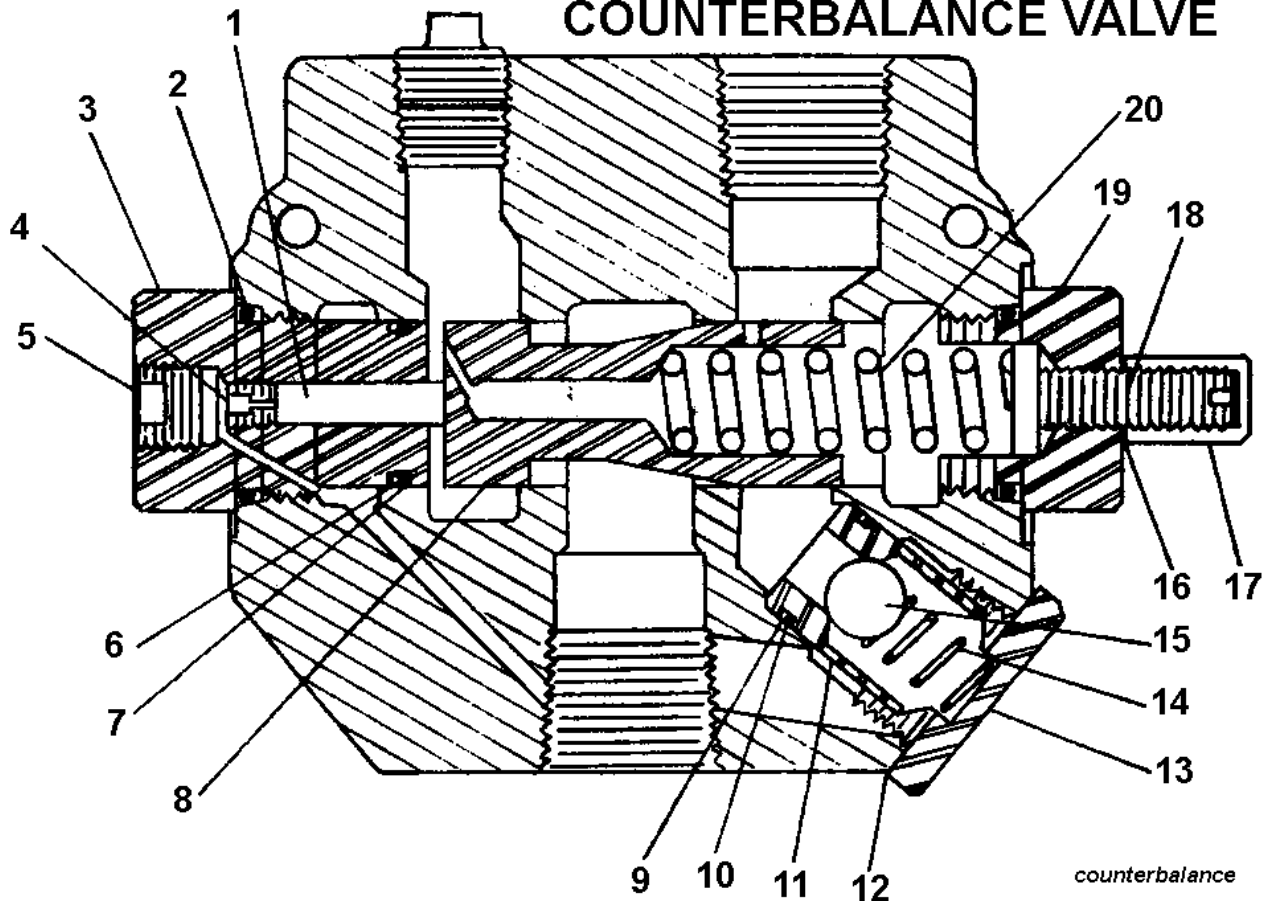


HYDRAULIC CYLINDER - A4560H114, 4-1/2" X 60"
MODEL I-175 PUSH OFF CYLINDER





COUNTERBALANCE VALVE



KEY NO.	PART NO.	DESCRIPTION
1	A101H49	Piston
2	A101H50	O-ring
3	A101H51	External pilot plug
4	A101H52	Orifice
5	A101H53	Plug
6	A101H54	O-ring
7	A101H55	Backup washer
*8	A101H56	Metering spool
9	A101H57	Backup washer
10	A101H58	O-ring
11	A101H59	Check seat
12	A101H60	Aluminum washer
13	A101H61	Check plug
14	A101H62	Check spring
15	A101H63	Check ball
16	A101H64	Aluminum washer
17	A101H65	Acorn nut
18	A101H66	Adjusting screw
19	A101H67	Adjusting plug - RD1075 CB
20	A101H68	Metering spring
*	A101H71	Valve body

* NOT SOLD SEPARATELY

