

Ashland

EARTHMOVERS

CS18-HD

Plumbing Parts Manual

ver. 1213



Ashland Industries

Crafting Quality since 1953!



1115 Rail Drive
P.O. Box 717
Ashland, WI U.S.A.
Toll Free: (877) 634-4622
Business: (715) 682-4622
Fax: (715) 682-9717

www.ashlandind.com
www.scraperdrawing.com

Department Contacts

If you have questions, please feel free to call or email us.

Ashland Industries' hours of operation are 8:00am to 5:00pm CST. We can be reached at:

Sales

| | |
|--|--|
| Will Davis <i>North American Sales Manager</i> | wdavis@ashlandind.com (877)-634-4622 EXT 220 Cell: (660) 973-1935 |
| Nick Speckman <i>Marketing and Inside Sales Coordinator</i> | (877)-634-4622 EXT 210 nspeckman@ashlandind.com |
| Randy Rust <i>President</i> | (877)-634-4622 EXT 140 rrust@ashlandind.com |

Parts & Service

| | |
|---|--|
| Al Haring <i>Service/Parts Manager</i> | (877)-634-4622 EXT 160 aharing@ashlandind.com |
| Cyndee Marx <i>Office Manager</i> | (877)-634-4622 EXT 100 cmarx@ashlandind.com |

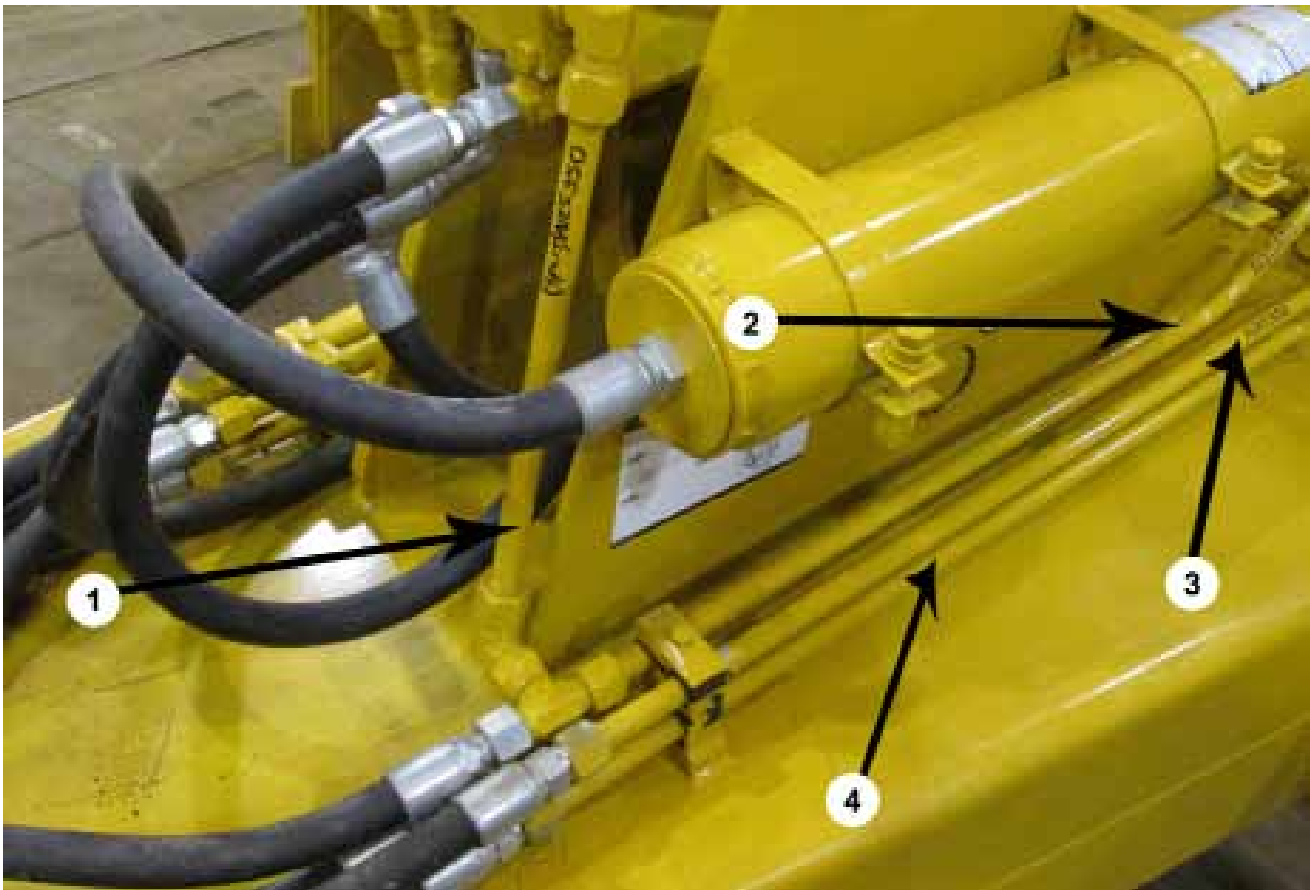
Important

Parts must be ordered through your local authorized Ashland Dealer. Be sure to state **MODEL** and **SERIAL NUMBER** of your machine, **PART NUMBER**, **DESCRIPTION**, and **QUANTITY** needed.

Unless this is done, we cannot provide prompt service or assure shipment of the correct parts.

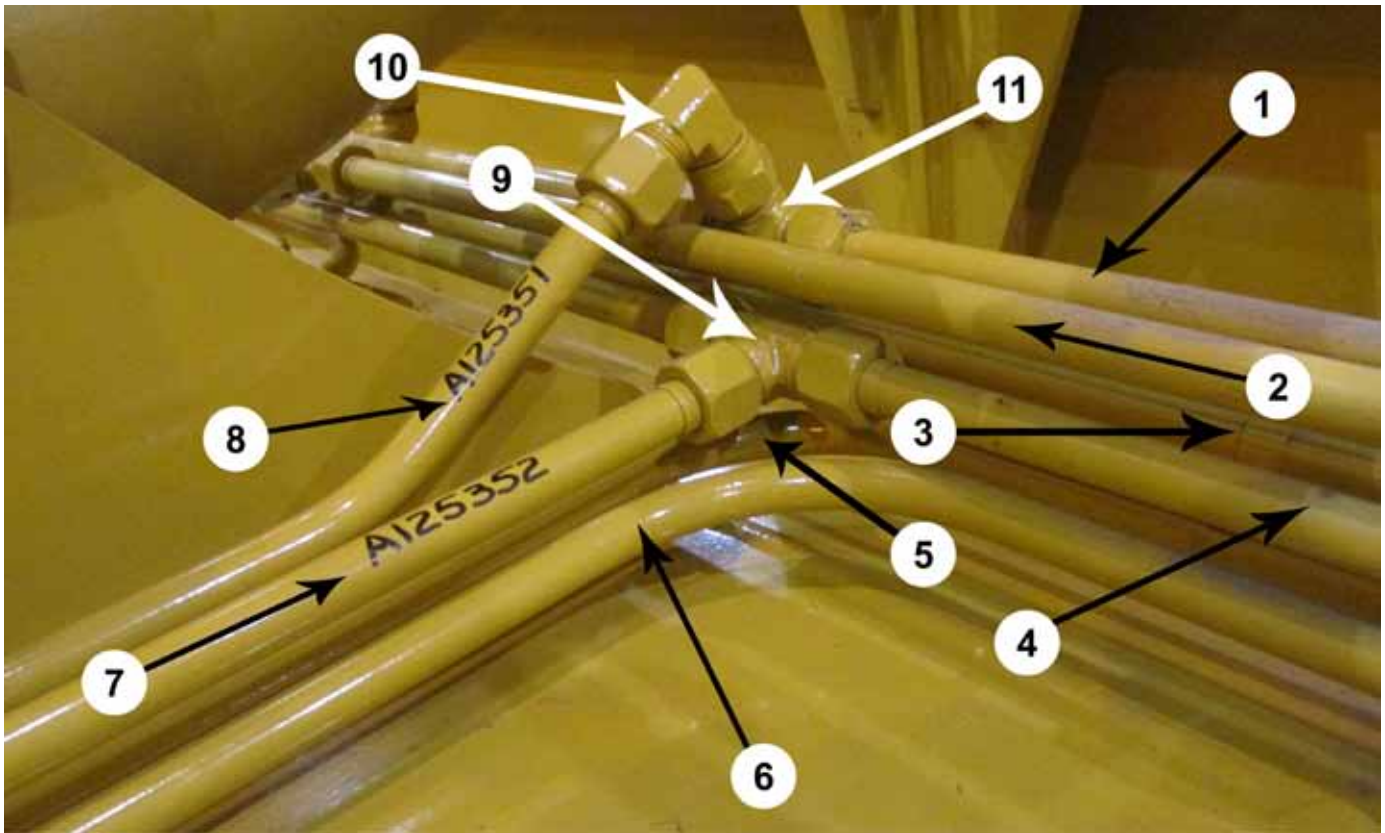
Ashland Industries weldable replacement parts are available to rebuild, modify or update your scraper to current factory specifications.

LEFT Horse Head Front Section (CS18-HD)



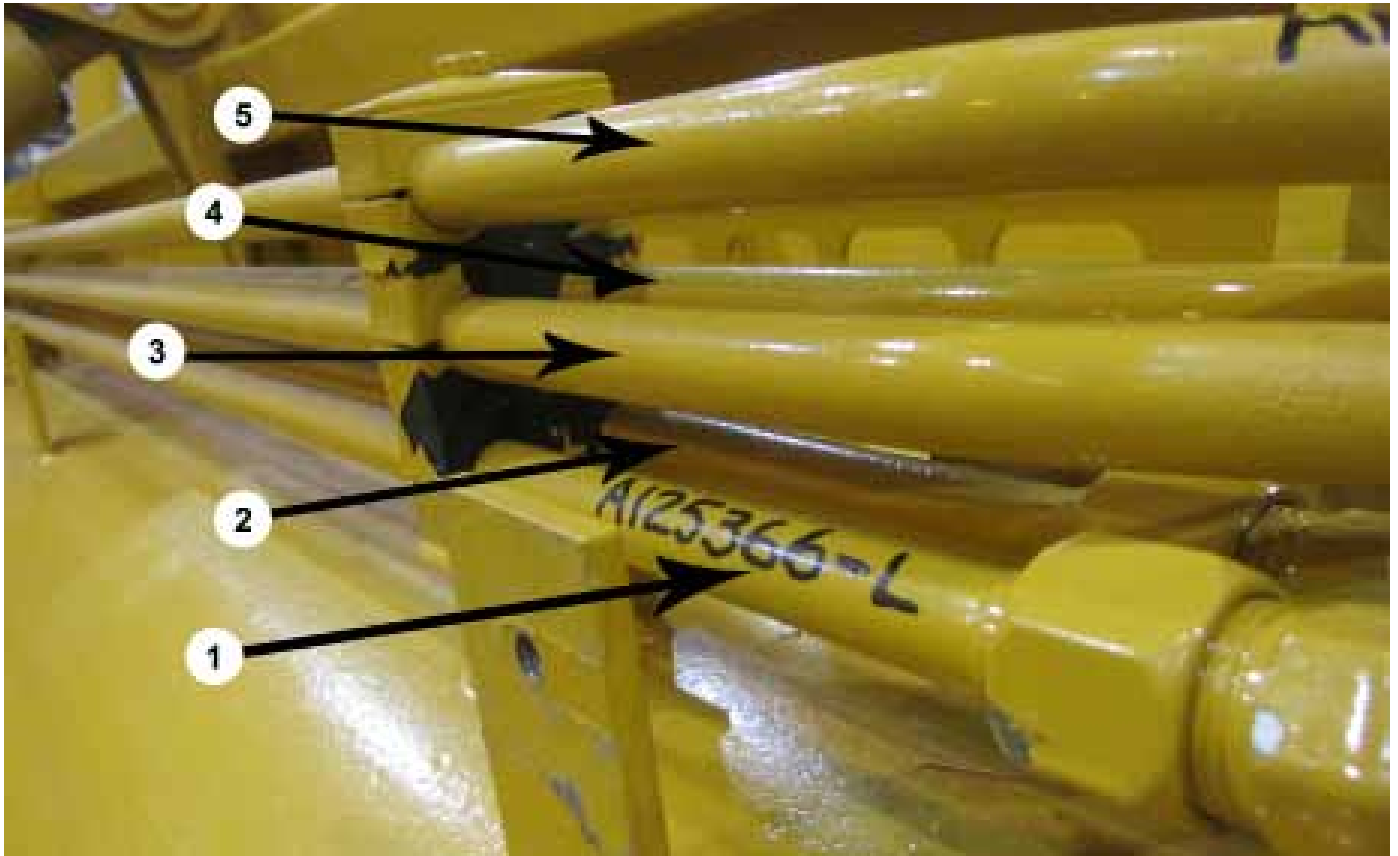
| KEY | PART | DESCRIPTION | S.N. CS18-HD |
|-----|-----------|--|--------------|
| 1 | A125350 | Tube Ass'y.: 3/4" x 38" w/-12 JIC Nuts & Sleeves | |
| 2 | A125351 | Tube Ass'y.: 3/4" x 32.75" w/-12 JIC Nuts & Sleeves | |
| 3 | A125352 | Tube Ass'y.: 3/4" x 33.125" w/-12 JIC Nuts & Sleeves | |
| 4 | A125366-L | Tube Ass'y.: 3/4" x 97.625" w/-12 JIC Nuts & Sleeves | |

LEFT Middle Front Section (CS18-HD)



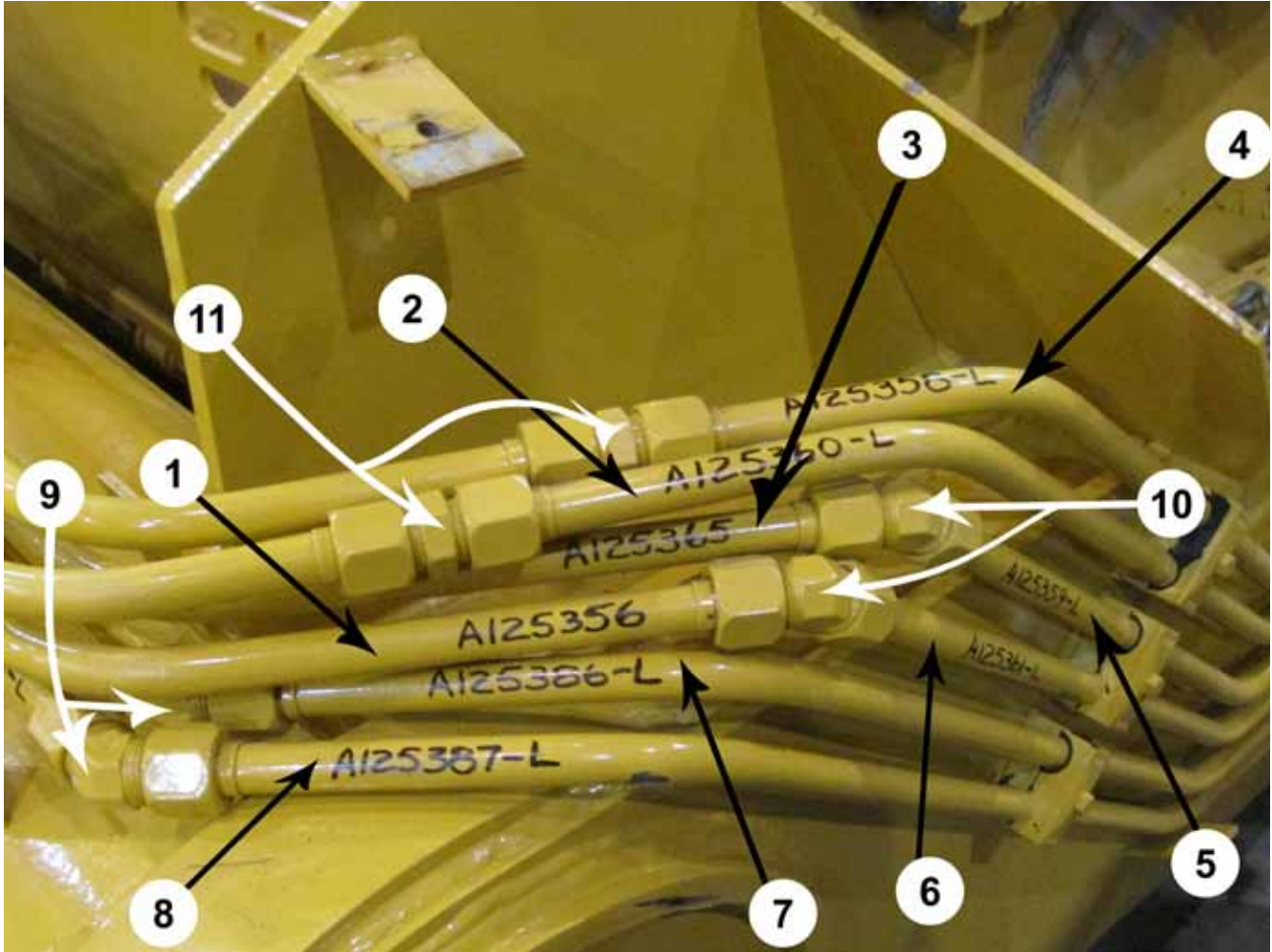
| KEY | PART | DESCRIPTION | S.N. CS18-HD |
|-----|-----------|---|--------------|
| 1 | A125355 | Tube Ass'y.: 3/4" x 69.875" w/-12 JIC Nuts & Sleeves | |
| 2 | A125362 | Tube Ass'y.: 3/4" x 83" w/-12 JIC Nuts & Sleeves | |
| 3 | A125365 | Tube Ass'y.: 3/4" x 90.375" w/-12 JIC Nuts & Sleeves | |
| 4 | A125356 | Tube Ass'y.: 3/4" x 72.25" w/-12 JIC Nuts & Sleeves | |
| 5 | A125385-L | Tube Ass'y.: 3/4" x 101.125" w/-12 JIC Nuts & Sleeves | |
| 6 | A125366-L | Tube Ass'y.: 3/4" x 97.625" w/-12 JIC Nuts & Sleeves | |
| 7 | A125352 | Tube Ass'y.: 3/4" x 33.125" w/-12 JIC Nuts & Sleeves | |
| 8 | A125351 | Tube Ass'y.: 3/4" x 32.75" w/-12 JIC Nuts & Sleeves | |
| 9 | AHA-00022 | Adapter: T 3/4 MJ x 3/4 MJ x 3/4 MJ | |
| 10 | AHA-00042 | Adapter: 90 Swiv. 3/4 MJ x 3/4 FJ | |
| 11 | AHA-00022 | Adapter: T 3/4 MJ x 3/4 MJ x 3/4 MJ | |

LEFT Front Section (CS18-HD)



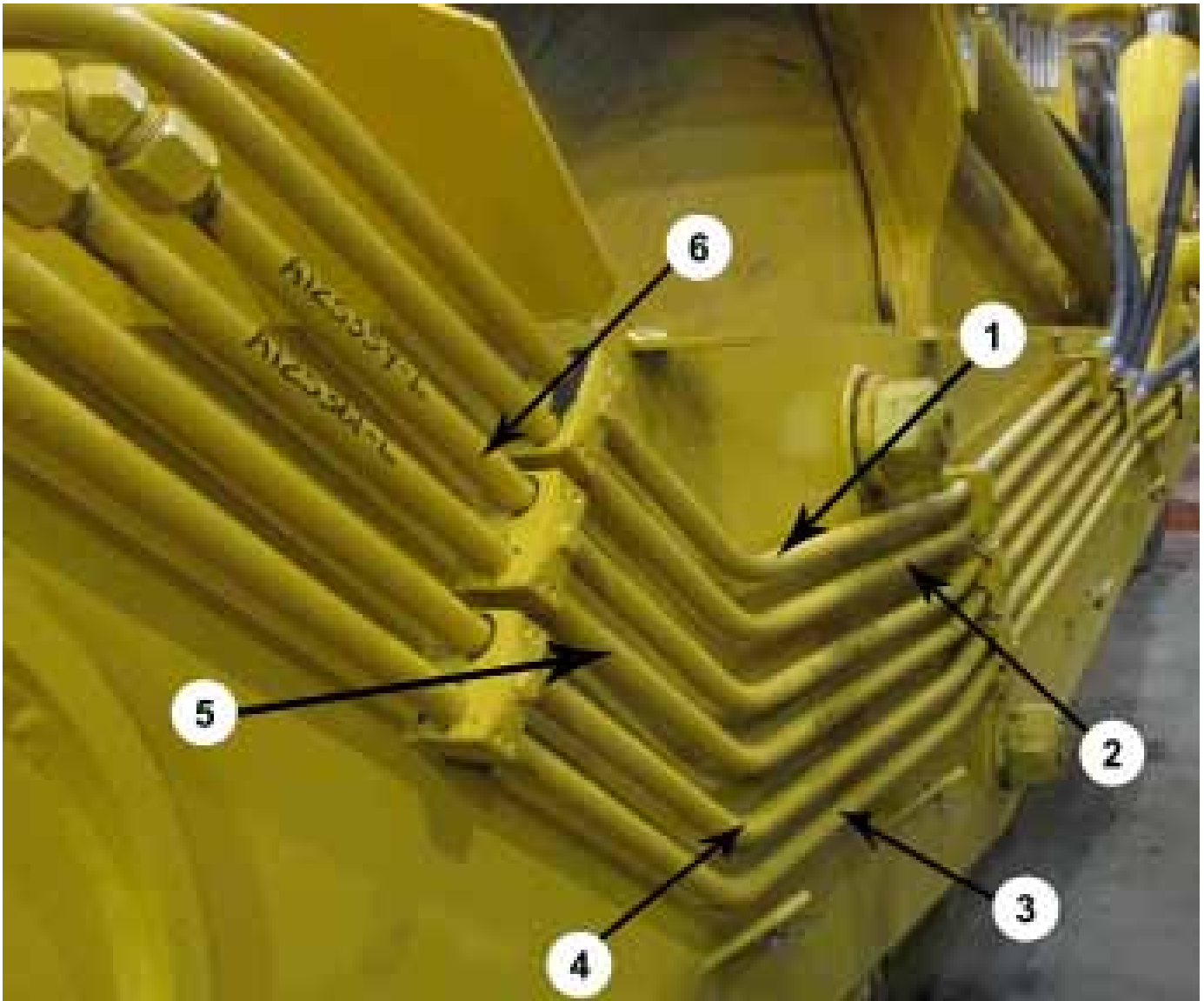
| KEY | PART | DESCRIPTION | S.N. CS18-HD |
|-----|-----------|---|--------------|
| 1 | A125366-L | Tube Ass'y.: 3/4" x 97.625" w/-12 JIC Nuts & Sleeves | |
| 2 | A125385-L | Tube Ass'y.: 3/4" x 101.125" w/-12 JIC Nuts & Sleeves | |
| 3 | A125356 | Tube Ass'y.: 3/4" x 72.25" w/-12 JIC Nuts & Sleeves | |
| 4 | A125365 | Tube Ass'y.: 3/4" x 90.375" w/-12 JIC Nuts & Sleeves | |
| 5 | A125362 | Tube Ass'y.: 3/4" x 83" w/-12 JIC Nuts & Sleeves | |

LEFT Front Shoulder Section (CS18-HD)



| KEY | PART | DESCRIPTION | S.N. CS18-HD |
|-----|-----------|--|--------------|
| 1 | A125356 | Tube Ass'y.: 3/4" x 72.25" w/-12 JIC Nuts & Sleeves | |
| 2 | A125360-L | Tube Ass'y.: 3/4" x 78.25" w/-12 JIC Nuts & Sleeves | |
| 3 | A125365 | Tube Ass'y.: 3/4" x 90.375" w/-12 JIC Nuts & Sleeves | |
| 4 | A125358-L | Tube Ass'y.: 3/4" x 73.5" w/-12 JIC Nuts & Sleeves | |
| 5 | A125359-L | Tube Ass'y.: 3/4" x 76.75" w/-12 JIC Nuts & Sleeves | |
| 6 | A125361-L | Tube Ass'y.: 3/4" x 81.25" w/-12 JIC Nuts & Sleeves | |
| 7 | A125386-L | Tube Ass'y.: 3/4" x 107.75" w/-12 JIC Nuts & Sleeves | |
| 8 | A125387-L | Tube Ass'y.: 3/4" x 111" w/-12 JIC Nuts & Sleeves | |
| 9 | AHA-00082 | Adapter: 45 Deg. -12MJ x -12MJ | |
| 10 | AHA-00082 | Adapter: 45 Deg. -12MJ x -12MJ | |
| 11 | AHA-00032 | Adapter: Str. 3/4 MJ x 3/4 MJ | |

LEFT Side Front Section (CS18-HD)



| KEY | PART | DESCRIPTION | S.N. CS18-HD |
|-----|-----------|--|--------------|
| 1 | A125358-L | Tube Ass'y.: 3/4" x 73.5" w/-12 JIC Nuts & Sleeves | |
| 2 | A125360-L | Tube Ass'y.: 3/4" x 78.25" w/-12 JIC Nuts & Sleeves | |
| 3 | A125387-L | Tube Ass'y.: 3/4" x 111" w/-12 JIC Nuts & Sleeves | |
| 4 | A125386-L | Tube Ass'y.: 3/4" x 107.75" w/-12 JIC Nuts & Sleeves | |
| 5 | A125361-L | Tube Ass'y.: 3/4" x 81.25" w/-12 JIC Nuts & Sleeves | |
| 6 | A125359-L | Tube Ass'y.: 3/4" x 76.75" w/-12 JIC Nuts & Sleeves | |

Left Side Hoses (CS18-HD)



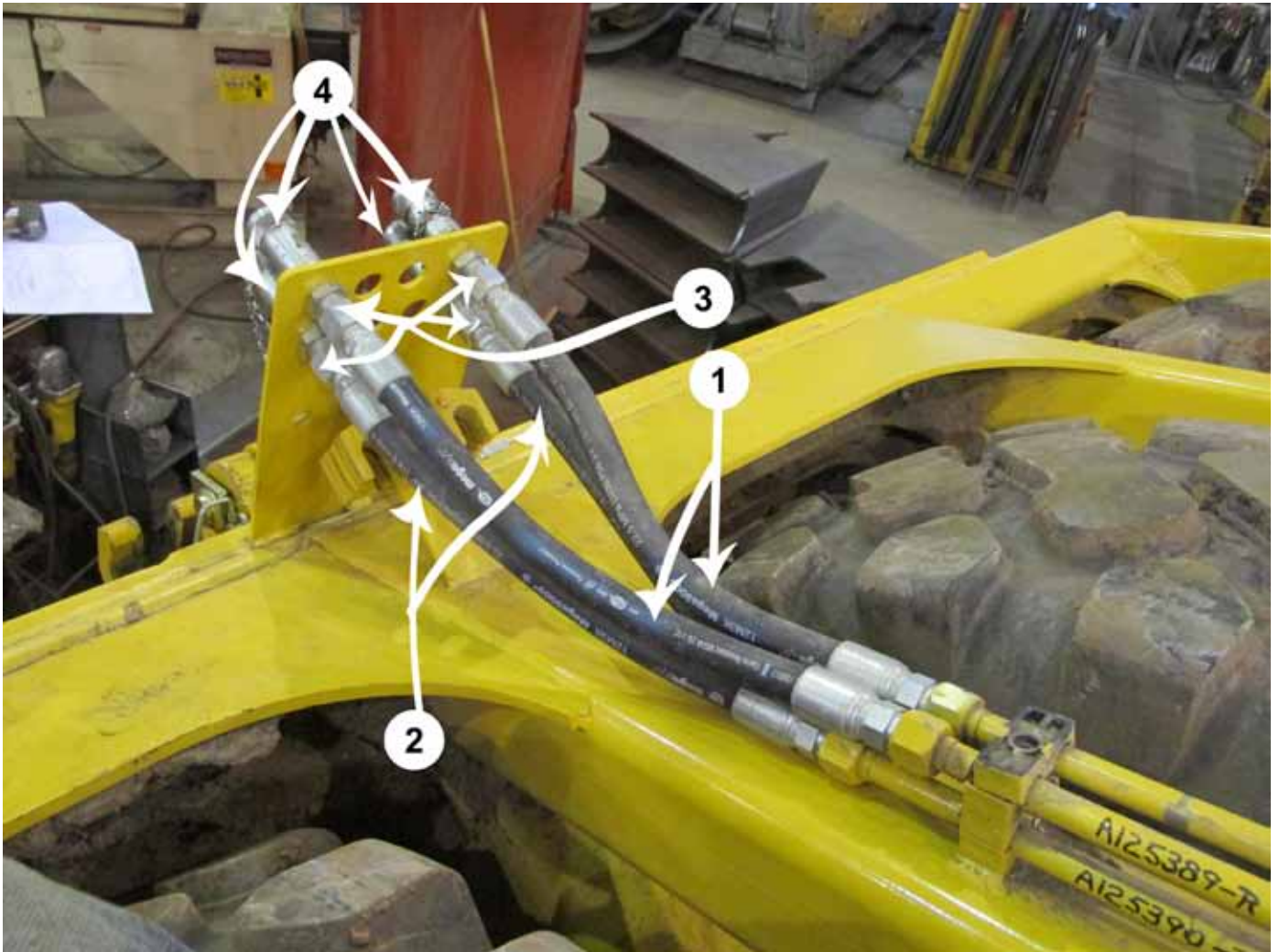
| KEY | PART | DESCRIPTION | S.N. CS18-HD |
|-----|-----------|---|--------------|
| 1 | A125376 | Hose Ass'y.: 3/4 x 43.5" L&R Bucket Cyl. CS18HD | |
| 2 | A125376 | Hose Ass'y.: 3/4 x 43.5" L&R Bucket Cyl. CS18HD | |
| 3 | A125380 | Hose Ass'y.: 3/4 x 50" R&L Lift Cyl. CS18HD | |
| 4 | A125379 | Hose Ass'y.: 3/4 x 54.5" R&L Lift Cyl. CS18HD | |
| 5 | A125368 | Hose Ass'y.: 3/4 x 71-1/2" L & R Rear Feed CS18HD | |
| 6 | A125368 | Hose Ass'y.: 3/4 x 71-1/2" L & R Rear Feed CS18HD | |
| 7 | AHA-00019 | Adapter: 90 Deg. 3/4 MJ x 3/4 MJ | |

LEFT Rear Section (CS18-HD)



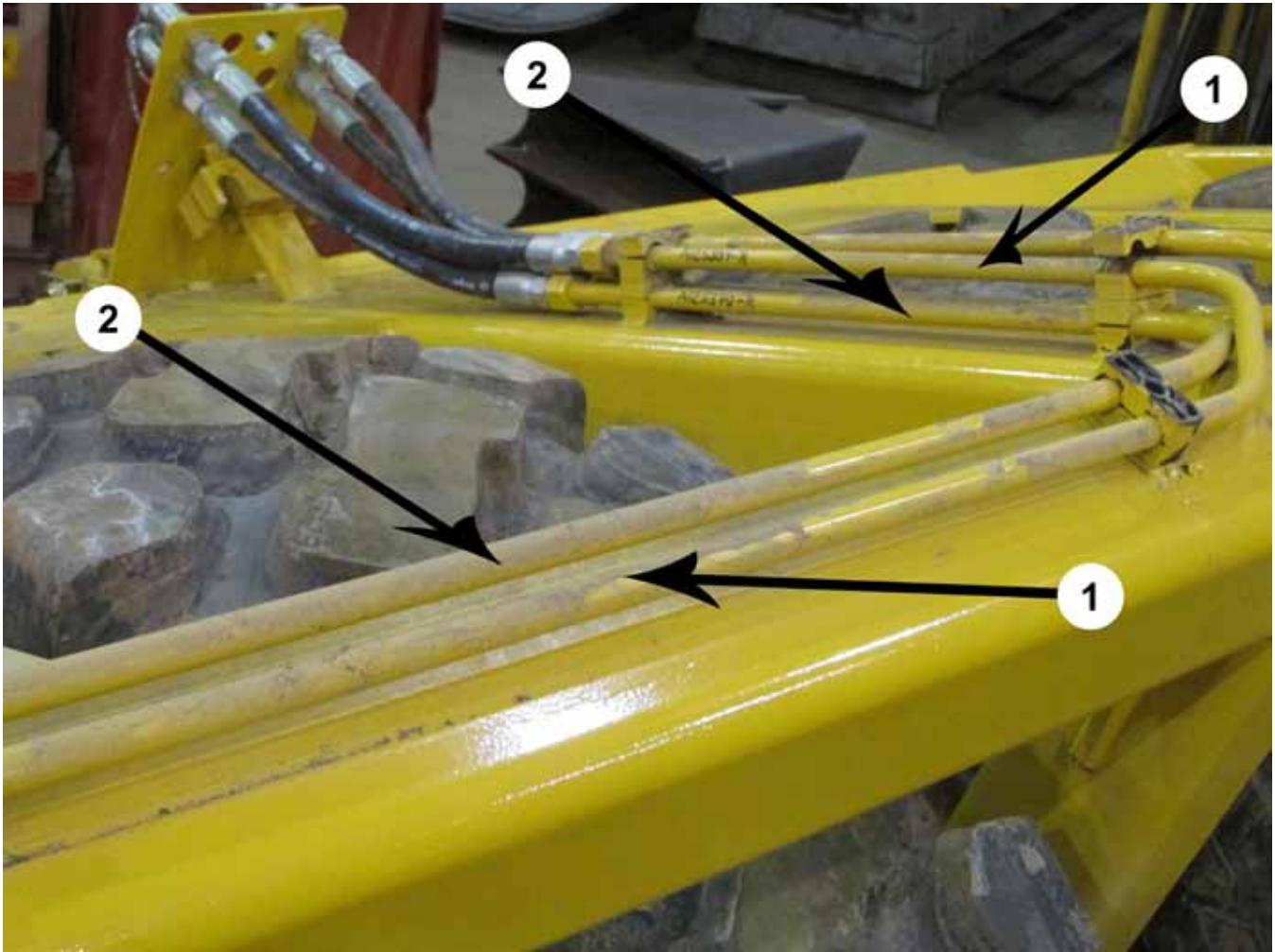
| KEY | PART | DESCRIPTION | S.N. CS18-HD |
|-----|-----------|------------------------------------|--------------|
| 1 | A125389-L | Tube Ass'y.:R.F. Top. Left CS18HD | |
| 2 | A125390-L | Tube Ass'y.:R.F. Bott. Left CS18HD | |

Rear Hoses (CS18-HD)



| KEY | PART | DESCRIPTION | S.N. CS18-HD |
|-----|-----------|---|--------------|
| 1 | A125375 | Hose Ass'y.: 3/4 x 23" Rear Feed CS18HD | |
| 2 | A125374 | Hose Ass'y.: 3/4 x 21" Rear Feed CS18HD | |
| 3 | AHA-00093 | Adapter: Str. B.H. -12 MJ x -12 MP | |
| 4 | AHF-00023 | Adapter: 90 Swiv. 7/8 M ORB x 1/2 FP | |

RIGHT Rear Section (CS18-HD)



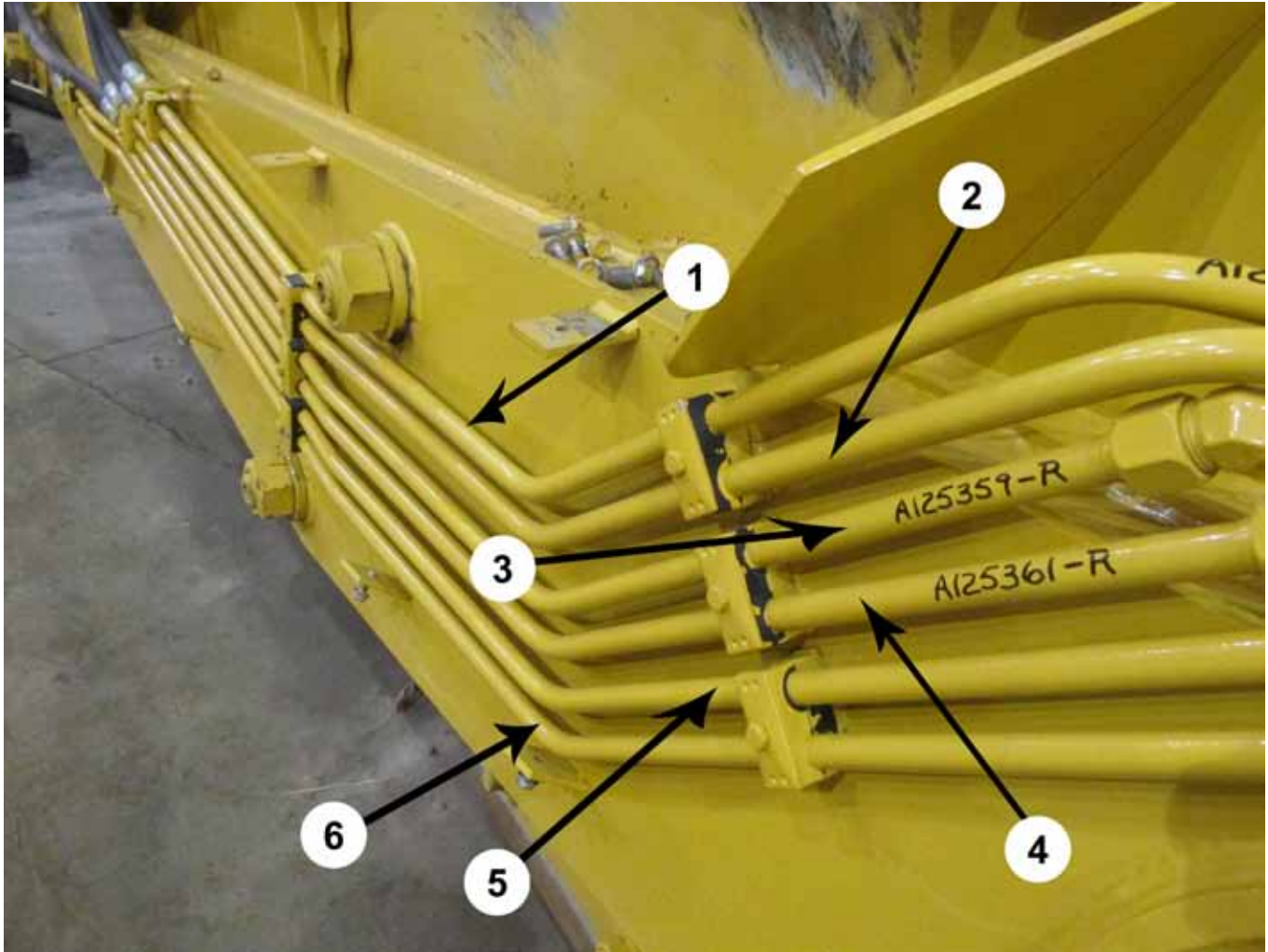
| KEY | PART | DESCRIPTION | S.N. CS18-HD |
|-----|-----------|-------------------------------------|--------------|
| 1 | A125389-R | Tube Ass'y.:R.F. Top. Right CS18HD | |
| 2 | A125390-R | Tube Ass'y.:R.F. Bott. Right CS18HD | |

Right Side Hoses (CS18-HD)



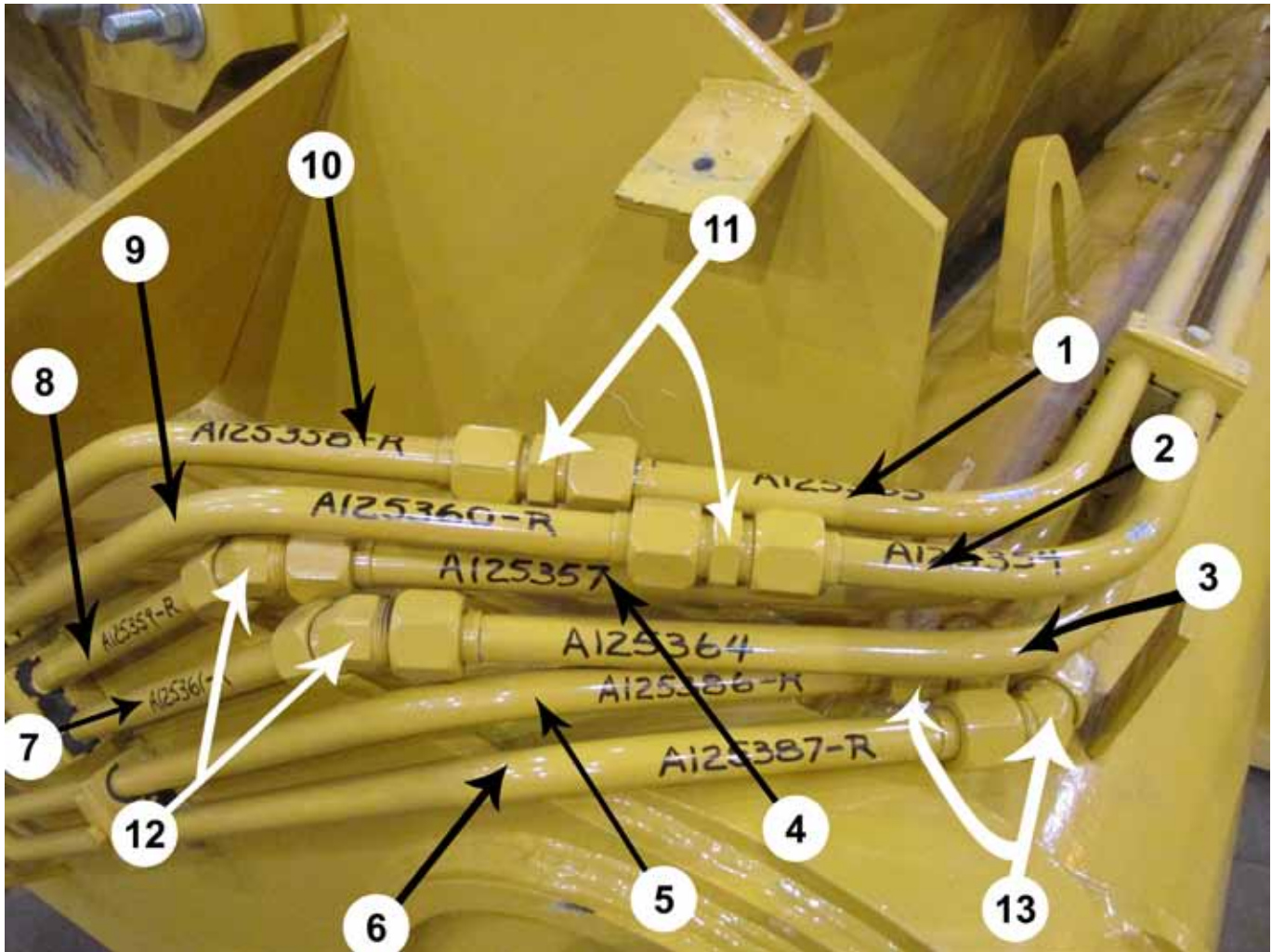
| KEY | PART | DESCRIPTION | S.N. CS18-HD |
|-----|-----------|---|--------------|
| 1 | A125376 | Hose Ass'y.: 3/4 x 43.5" L&R Bucket Cyl. CS18HD | |
| 2 | A125376 | Hose Ass'y.: 3/4 x 43.5" L&R Bucket Cyl. CS18HD | |
| 3 | A125380 | Hose Ass'y.: 3/4 x 50" R&L Lift Cyl. CS18HD | |
| 4 | A125379 | Hose Ass'y.: 3/4 x 54.5" R&L Lift Cyl. CS18HD | |
| 5 | A125368 | Hose Ass'y.: 3/4 x 71-1/2" L & R Rear Feed CS18HD | |
| 6 | A125368 | Hose Ass'y.: 3/4 x 71-1/2" L & R Rear Feed CS18HD | |
| 7 | AHA-00019 | Adapter: 90 Deg. 3/4 MJ x 3/4 MJ | |

RIGHT Middle Front Section (CS18-HD)



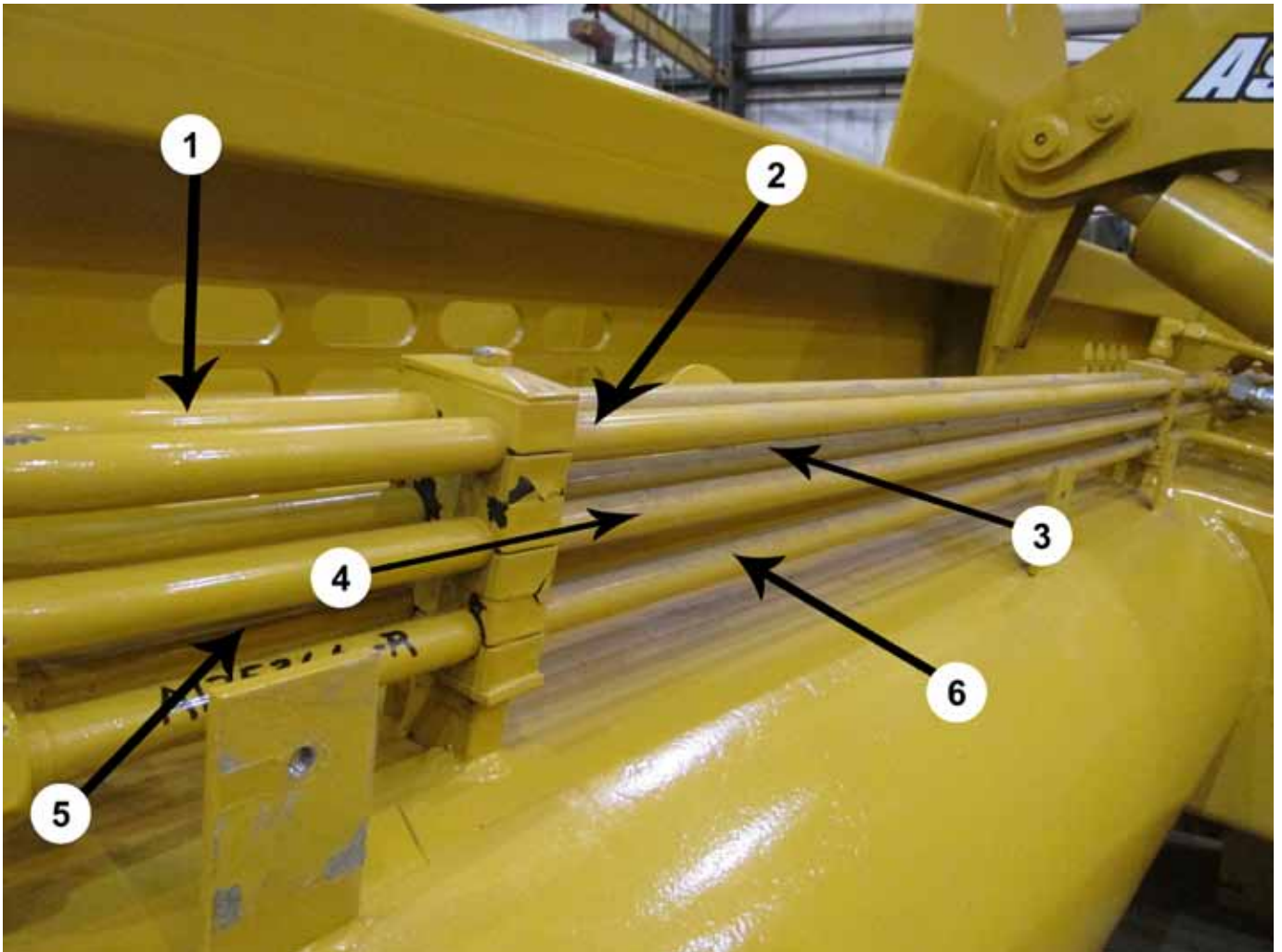
| KEY | PART | DESCRIPTION | S.N. CS18-HD |
|-----|-----------|--|--------------|
| 1 | A125358-R | Tube Ass'y.: 3/4" x 73.5" w/-12 JIC Nuts & Sleeves | |
| 2 | A125360-R | Tube Ass'y.: 3/4" x 78.25" w/-12 JIC Nuts & Sleeves | |
| 3 | A125359-R | Tube Ass'y.: 3/4" x 76.75" w/-12 JIC Nuts & Sleeves | |
| 4 | A125361-R | Tube Ass'y.: 3/4" x 81.25" w/-12 JIC Nuts & Sleeves | |
| 5 | A125386-R | Tube Ass'y.: 3/4" x 107.75" w/-12 JIC Nuts & Sleeves | |
| 6 | A125387-R | Tube Ass'y.: 3/4" x 111" w/-12 JIC Nuts & Sleeves | |

RIGHT Shoulder Front Section (CS18-HD)



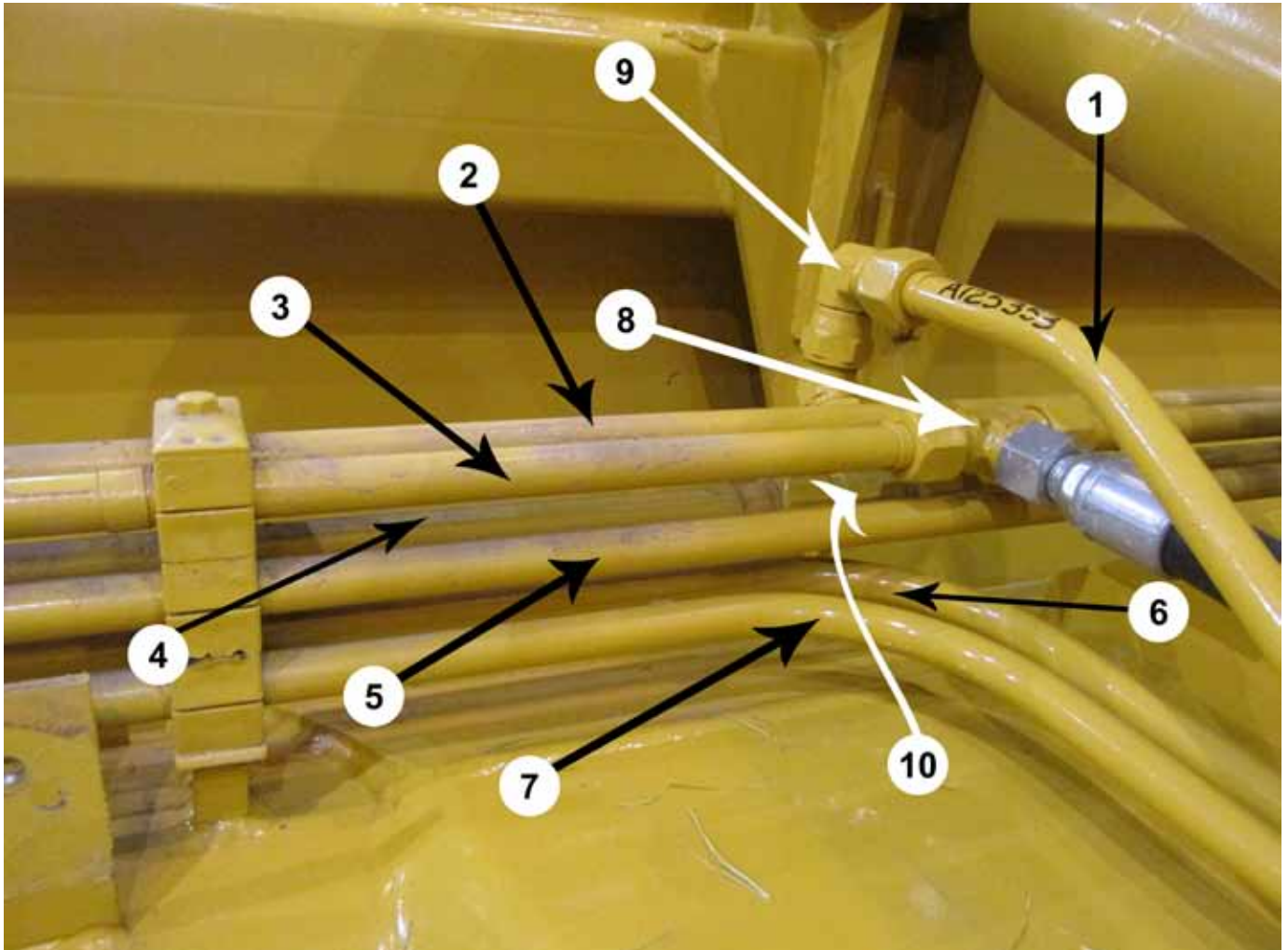
| KEY | PART | DESCRIPTION | S.N. CS18-HD |
|-----|-----------|--|--------------|
| 1 | A125363 | Tube Ass'y.: 3/4" x 84.375" w/-12 JIC Nuts & Sleeves | |
| 2 | A125354 | Tube Ass'y.: 3/4" x 68.375" w/-12 JIC Nuts & Sleeves | |
| 3 | A125364 | Tube Ass'y.: 3/4" x 89.875" w/-12 JIC Nuts & Sleeves | |
| 4 | A125357 | Tube Ass'y.: 3/4" x 72.625" w/-12 JIC Nuts & Sleeves | |
| 5 | A125386-R | Tube Ass'y.: 3/4" x 107.75" w/-12 JIC Nuts & Sleeves | |
| 6 | A125387-R | Tube Ass'y.: 3/4" x 111" w/-12 JIC Nuts & Sleeves | |
| 7 | A125361-R | Tube Ass'y.: 3/4" x 81.25" w/-12 JIC Nuts & Sleeves | |
| 8 | A125359-R | Tube Ass'y.: 3/4" x 76.75" w/-12 JIC Nuts & Sleeves | |
| 9 | A125360-R | Tube Ass'y.: 3/4" x 78.25" w/-12 JIC Nuts & Sleeves | |
| 10 | A125358-R | Tube Ass'y.: 3/4" x 73.5" w/-12 JIC Nuts & Sleeves | |
| 11 | AHA-00032 | Adapter: Str. 3/4 MJ x 3/4 MJ | |
| 12 | AHA-00082 | Adapter: 45 Deg. -12MJ x -12MJ | |
| 13 | AHA-00082 | Adapter: 45 Deg. -12MJ x -12MJ | |

RIGHT Middle Top Front Section (CS18-HD)



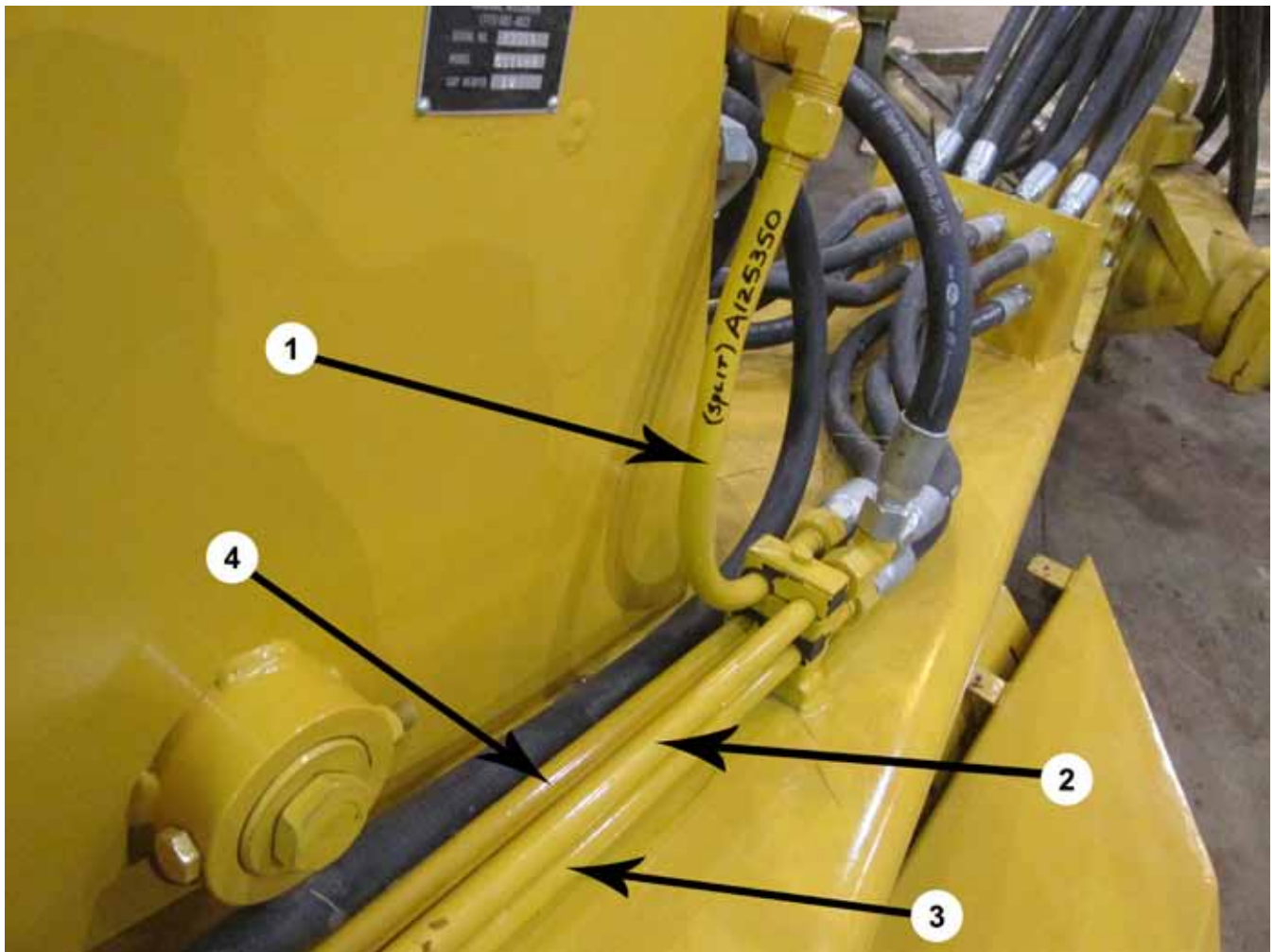
| KEY | PART | DESCRIPTION | S.N. CS18-HD |
|-----|-----------|---|--------------|
| 1 | A125363 | Tube Ass'y.: 3/4" x 84.375" w/-12 JIC Nuts & Sleeves | |
| 2 | A125354 | Tube Ass'y.: 3/4" x 68.375" w/-12 JIC Nuts & Sleeves | |
| 3 | A125357 | Tube Ass'y.: 3/4" x 72.625" w/-12 JIC Nuts & Sleeves | |
| 4 | A125364 | Tube Ass'y.: 3/4" x 89.875" w/-12 JIC Nuts & Sleeves | |
| 5 | A125385-R | Tube Ass'y.: 3/4" x 101.125" w/-12 JIC Nuts & Sleeves | |
| 6 | A125366-R | Tube Ass'y.: 3/4" x 97.625" w/-12 JIC Nuts & Sleeves | |

RIGHT Middle Front Section (CS18-HD)



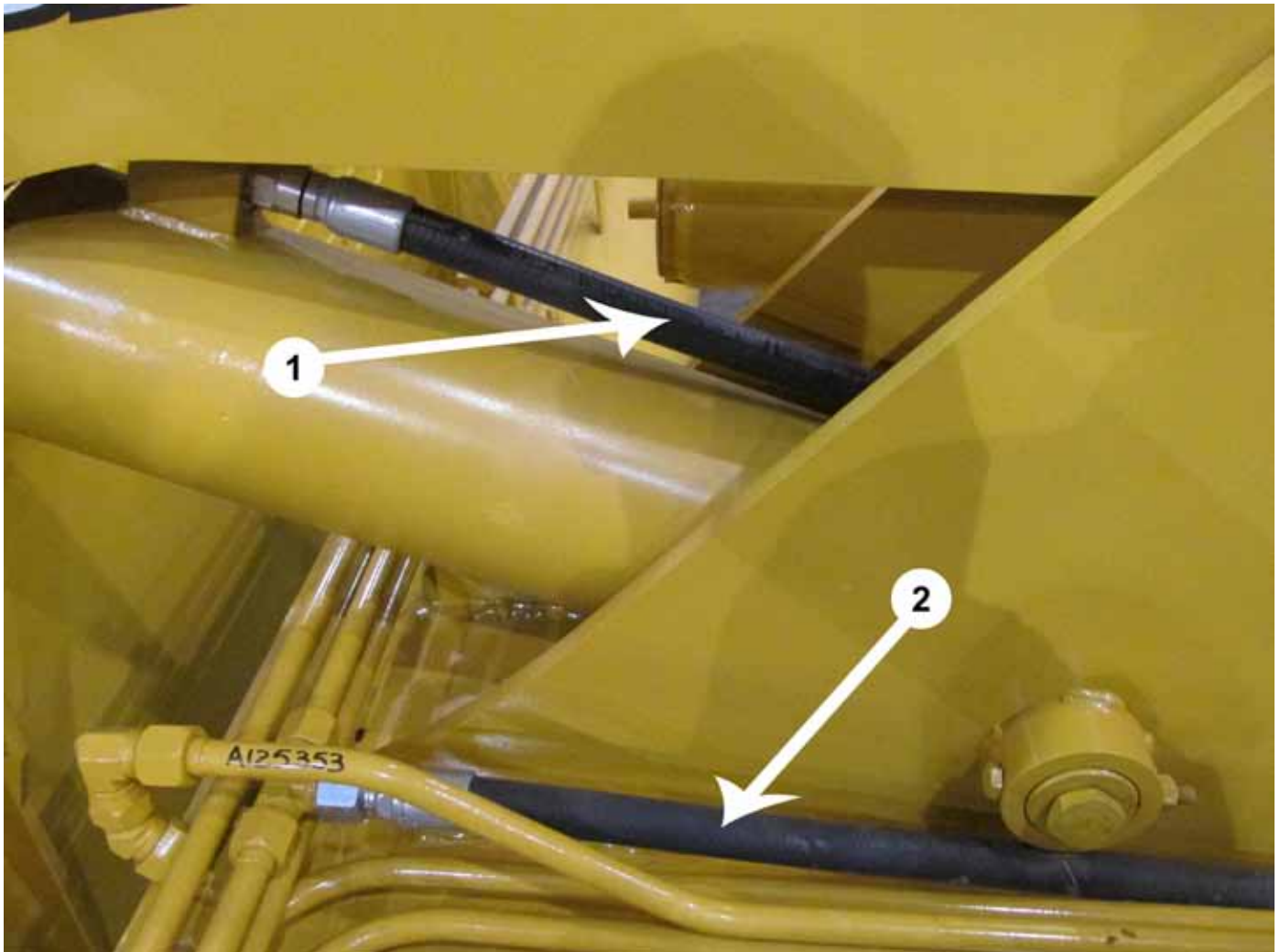
| KEY | PART | DESCRIPTION | S.N. CS18-HD |
|-----|-----------|---|--------------|
| 1 | A125353 | Tube Ass'y.: 3/4" x 37.625" w/-12 JIC Nuts & Sleeves | |
| 2 | A125363 | Tube Ass'y.: 3/4" x 84.375" w/-12 JIC Nuts & Sleeves | |
| 3 | A125354 | Tube Ass'y.: 3/4" x 68.375" w/-12 JIC Nuts & Sleeves | |
| 4 | A125357 | Tube Ass'y.: 3/4" x 72.625" w/-12 JIC Nuts & Sleeves | |
| 5 | A125364 | Tube Ass'y.: 3/4" x 89.875" w/-12 JIC Nuts & Sleeves | |
| 6 | A125385-R | Tube Ass'y.: 3/4" x 101.125" w/-12 JIC Nuts & Sleeves | |
| 7 | A125366-R | Tube Ass'y.: 3/4" x 97.625" w/-12 JIC Nuts & Sleeves | |
| 8 | AHA-00022 | Adapter: T 3/4 MJ x 3/4 MJ x 3/4 MJ | |
| 9 | AHA-00042 | Adapter: 90 Swiv. 3/4 MJ x 3/4 FJ | |
| 10 | AHA-00050 | Adapter: T 3/4 MJ x 3/4 FJ Sw. x 3/4 MJ | |

RIGHT Horse Head Section (CS18-HD)



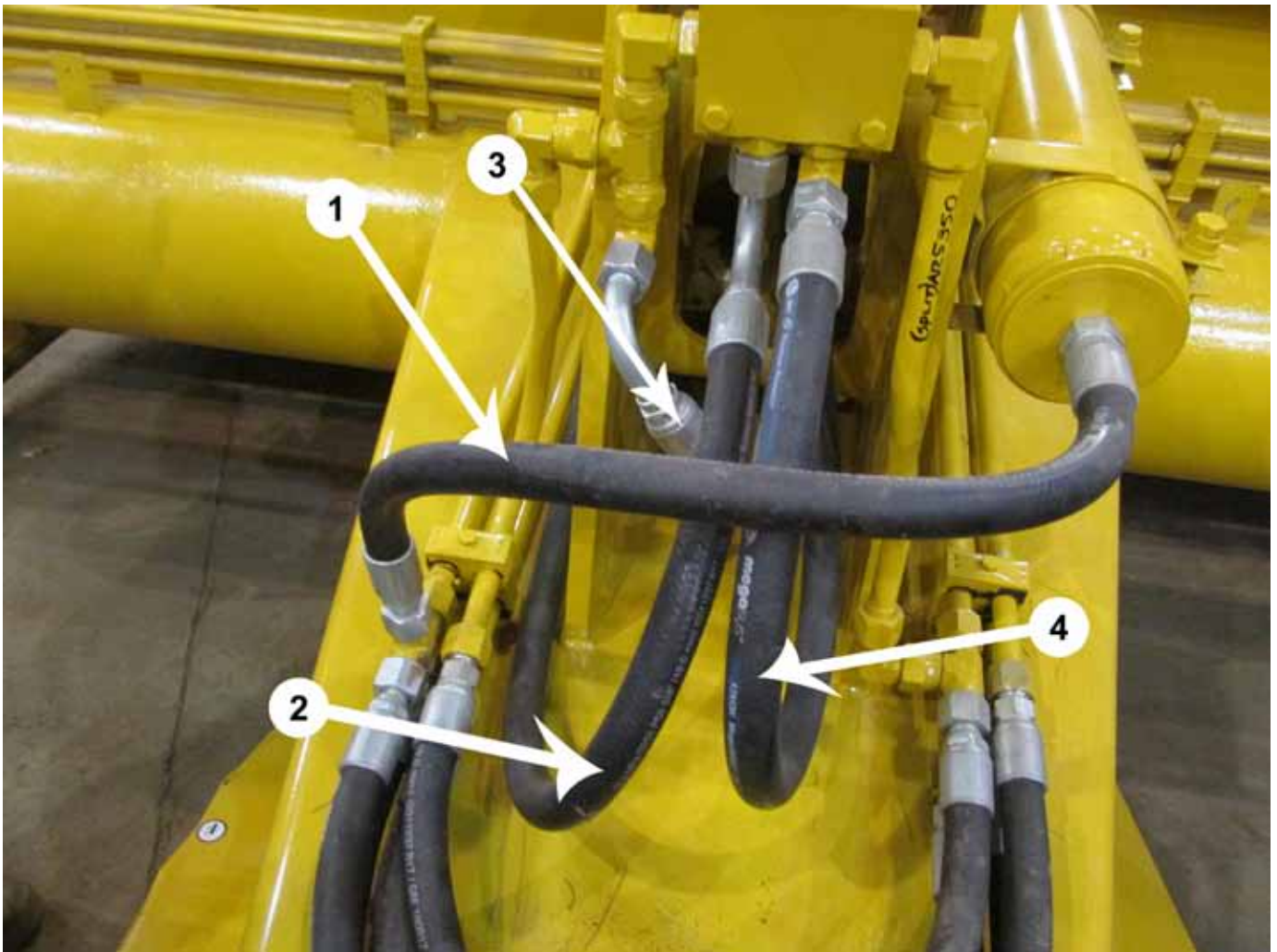
| KEY | PART | DESCRIPTION | S.N. CS18-HD |
|-----|-----------|---|--------------|
| 1 | A125350 | Tube Ass'y.: 3/4" x 38" w/-12 JIC Nuts & Sleeves | |
| 2 | A125353 | Tube Ass'y.: 3/4" x 37.625" w/-12 JIC Nuts & Sleeves | |
| 3 | A125366-R | Tube Ass'y.: 3/4" x 97.625" w/-12 JIC Nuts & Sleeves | |
| 4 | A125385-R | Tube Ass'y.: 3/4" x 101.125" w/-12 JIC Nuts & Sleeves | |

Horse Head Top Hoses (CS18-HD)



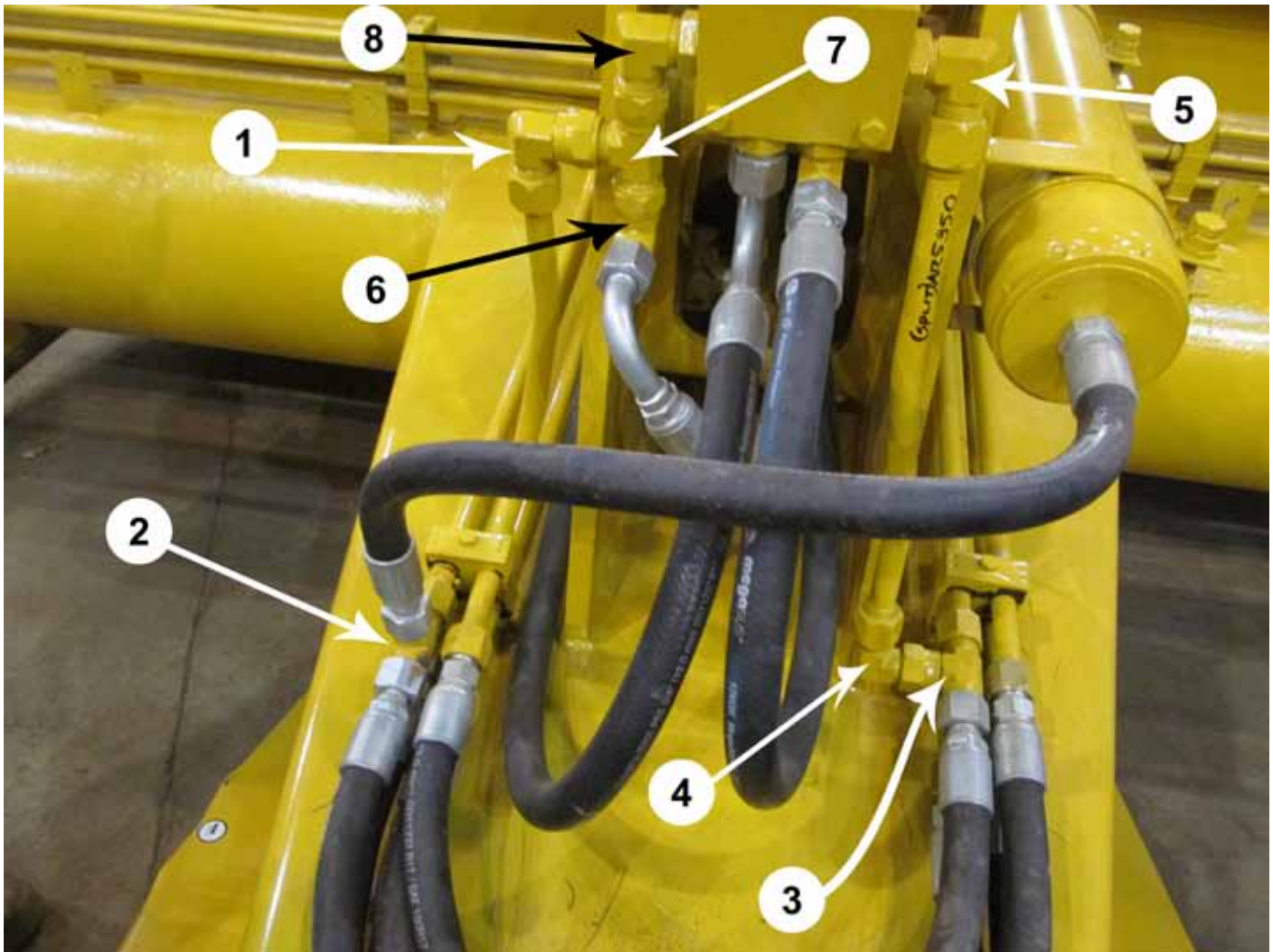
| KEY | PART | DESCRIPTION | S.N. CS18-HD |
|-----|---------|---|--------------|
| 1 | A125378 | Hose Ass'y.: 3/4 x 45" Front Cyl. CS18HD | |
| 2 | A125369 | Hose Ass'y.: 3/4 x 63" Right Front CS18HD | |

Horse Head Hoses (CS18-HD)



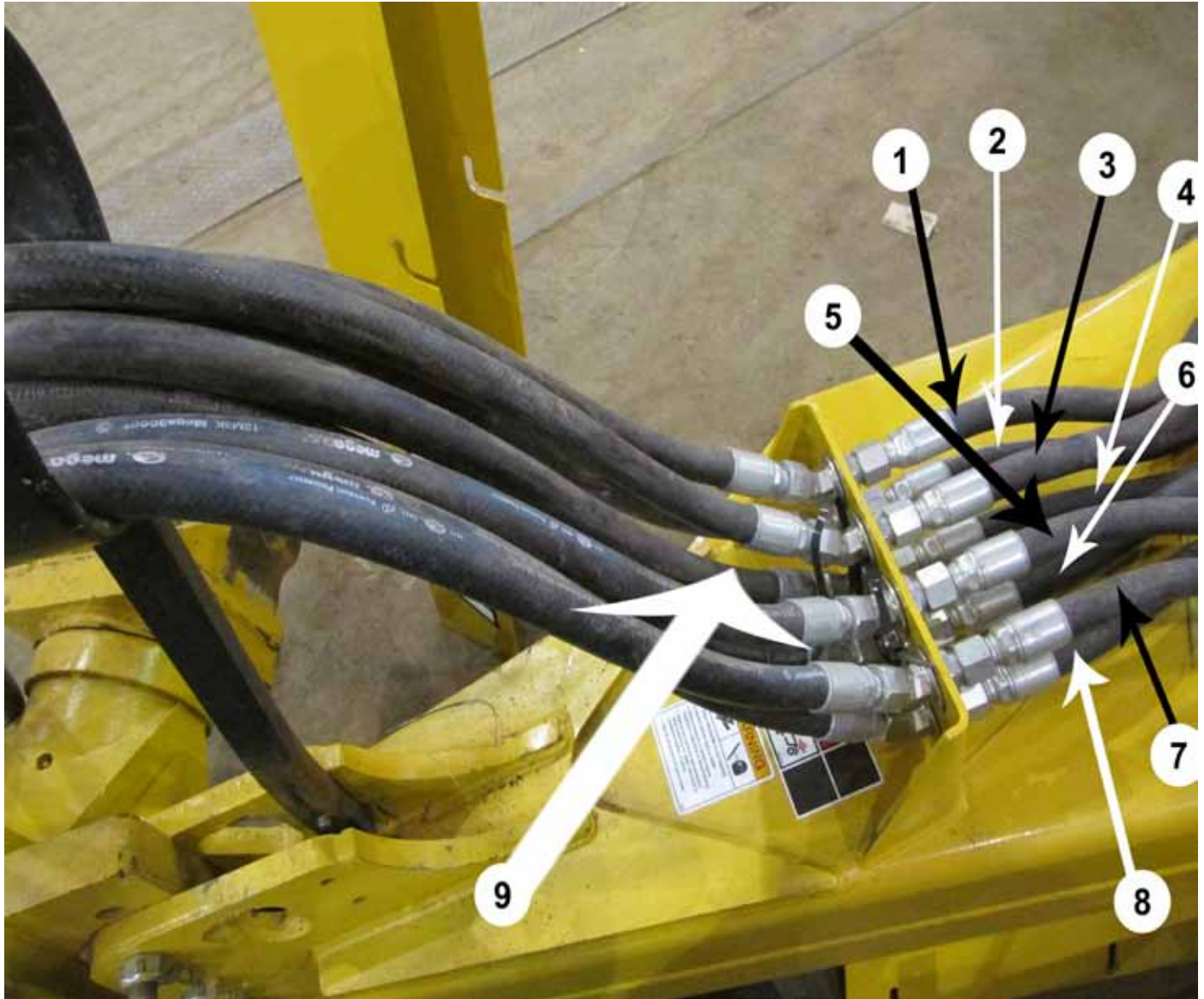
| KEY | PART | DESCRIPTION | S.N. CS18-HD |
|-----|---------|---|--------------|
| 1 | A125371 | Hose Ass'y.: 3/4 x 30.5" Right Front CS18HD | |
| 2 | A125369 | Hose Ass'y.: 3/4 x 63" Right Front CS18HD | |
| 3 | A125378 | Hose Ass'y.: 3/4 x 45" Front Cyl. CS18HD | |
| 4 | A125377 | Hose Ass'y.: 3/4 x 45" Front Cyl. CS18HD | |

Horse Head Fittings (CS18-HD)



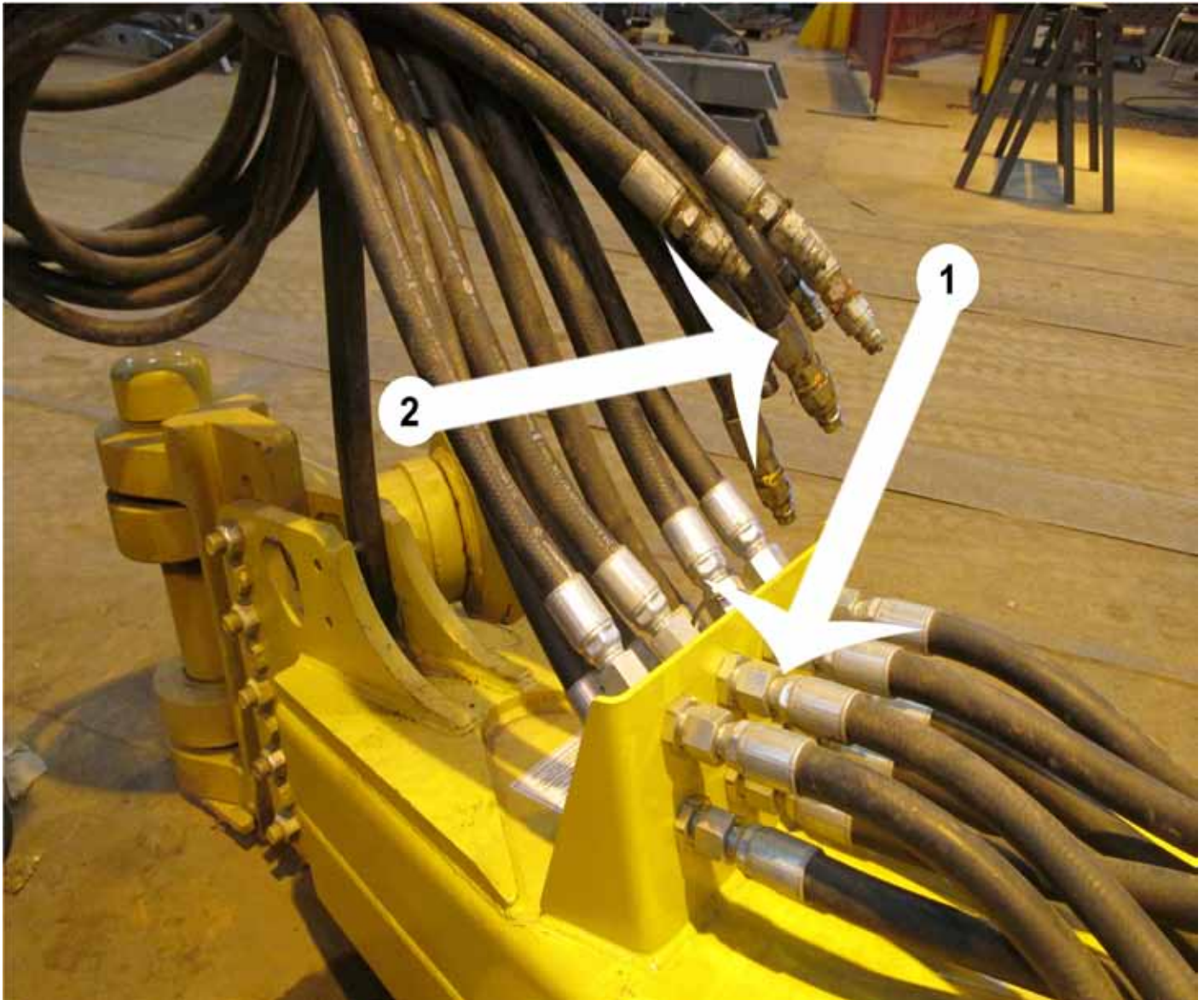
| KEY | PART | DESCRIPTION | S.N. CS18-HD |
|-----|-----------|---|--------------|
| 1 | AHA-00042 | Adapter: 90 Swiv. 3/4 MJ x 3/4 FJ | |
| 2 | AHA-00022 | Adapter: T 3/4 MJ x 3/4 MJ x 3/4 MJ | |
| 3 | AHA-00050 | Adapter: T 3/4 MJ x 3/4 FJ Sw. x 3/4 MJ | |
| 4 | AHA-00019 | Adapter: 90 Deg. 3/4 MJ x 3/4 MJ | |
| 5 | AHA-00044 | Adapter: 90 Deg. 3/4 MJ x 1-1/16 M ORB | |
| 6 | AHA-00042 | Adapter: 90 Swiv. 3/4 MJ x 3/4 FJ | |
| 7 | AHA-00049 | Adapter: T 3/4 MJ x 3/4 MJ x 3/4 FJ Swiv. | |
| 8 | AHA-00044 | Adapter: 90 Deg. 3/4 MJ x 1-1/16 M ORB | |

Front Section Bulkhead Hoses (CS18-HD)



| KEY | PART | DESCRIPTION | S.N. CS18-HD |
|-----|---------|---|--------------|
| 1 | A125373 | Hose Ass'y.: 3/4 x 32" Right Front CS18HD | |
| 2 | A125372 | Hose Ass'y.: 3/4 x 30" Right Front CS18HD | |
| 3 | A125370 | Hose Ass'y.: 3/4 x 31" Right Front CS18HD | |
| 4 | A125373 | Hose Ass'y.: 3/4 x 32" Right Front CS18HD | |
| 5 | A125382 | Hose Ass'y.: 3/4 x 32" Left Front CS18HD | |
| 6 | A125384 | Hose Ass'y.: 3/4 x 30" Left Front CS18HD | |
| 7 | A125383 | Hose Ass'y.: 3/4 x 33.5" Left Front CS18HD | |
| 8 | A125381 | Hose Ass'y.: 3/4 x 32" Left Front CS18HD | |
| 9 | A125367 | Hose Ass'y.: 3/4 x 104" Connecting CS18HD (8 Total Per Machine) | |

Bulkhead Fittings (CS18-HD)



| KEY | PART | DESCRIPTION | S.N. CS18-HD |
|-----|-----------|--|--------------|
| 1 | AHA-00063 | Adapter: 45 Deg. 3/4 MJ x 3/4 MJ Bulkhead | |
| 2 | AHF-00021 | Fitting: 3/4"FNPT x 1/2" Male Quick Conn. Poppet Style (THIS IS FOR THE OPPOSITE END OF THE HOSE THAT GOES INTO TRACTOR) | |