



BUCHLI MASTER PARTS BOOK

L-12 Land Leveler

ver 12-02

Ashland Industries Inc.
1115 Rail Drive
P.O. Box 717
Ashland, WI. 54806
Ph: 877-634-4622 *Toll Free*
Ph: 715-682-4622
Fx: 715-682-9717
www.ashlandind.com



INDEX PAGE

L-12 Land Leveler

How to order parts:

Be sure to state MODEL and SERIAL NO. of machine, PARTS NO., DESCRIPTION, and QUANTITY wanted.

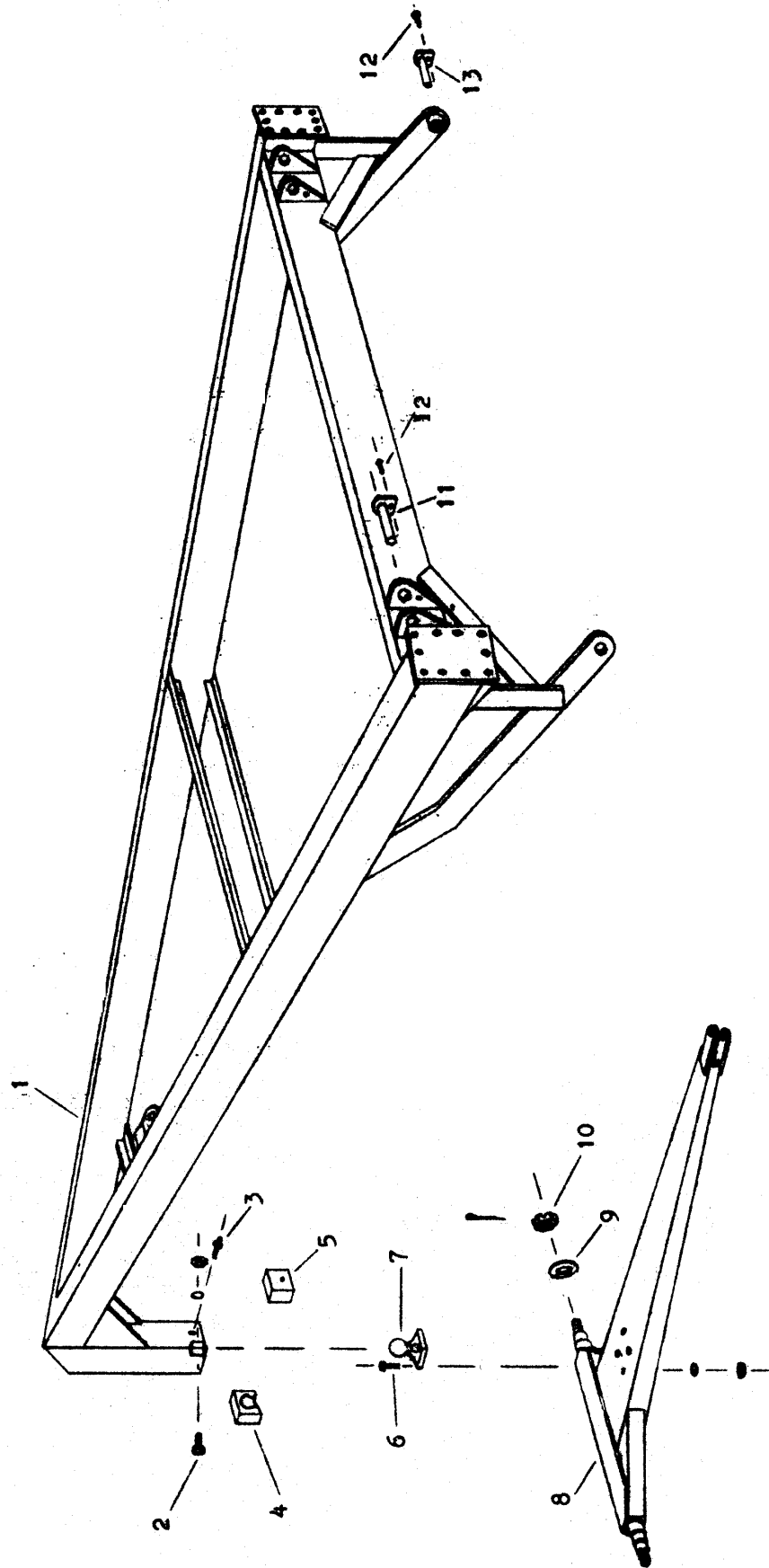
Unless this is done, we cannot give you prompt service or send the correct parts.

I N D E X

Page No.

3 & 4	Illustration & Parts List - Front Frame Section, and Front Axle Assembly
5 & 6	Illustration & Parts List - Middle & Rear Section of Front Frame
7 & 8	Illustration & Parts List - Bowl Assembly
9 & 10	Illustration & Parts List - Front & Rear Section of Rear Frame
11	Illustration & Parts List - Wheel, Hub & Bearing Assembly
12	Illustration & Parts List - Hydraulic Cylinder, 3-1/2" x 10"

FRONT SECTION OF FRONT FRAME AND AXLE ASS'Y



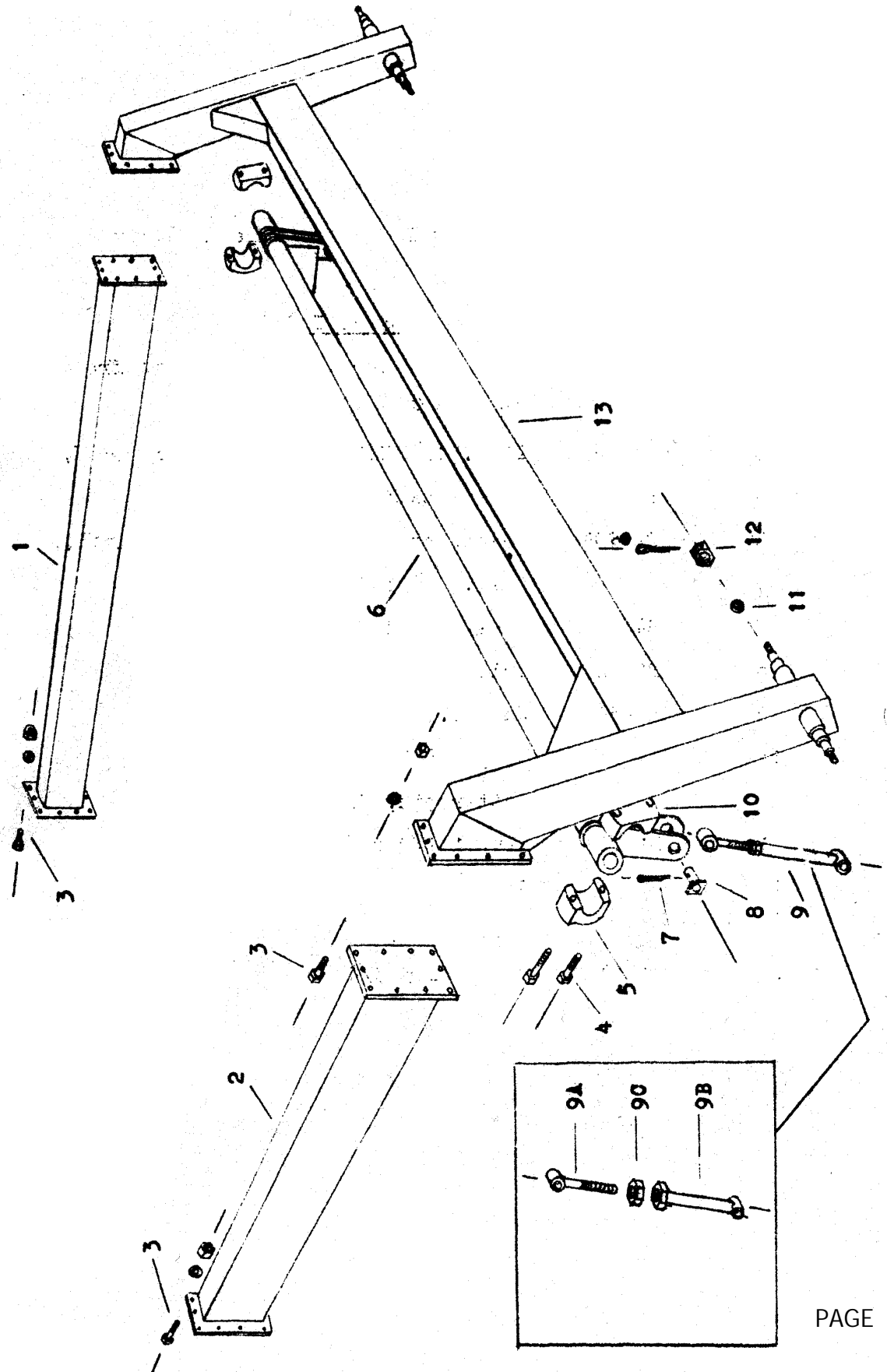
PARTS LIST

FRONT SECTION OF FRONT FRAME & AXLE ASS'Y

L-12 LAND LEVELER

Key No.	Part No.	Description
1	B1201	Frame, front section of front frame
2		Bolt, 5/8 x 4 w/nut & LW
3	B2206	Zerk, 1/8 NPT (straight long shank)
4	B40004	Cast socket half (front)
5	B40005	Cast socket half (rear w/zerk hole)
6		Bolt, 3/4 x 2-1/2 w/nut & LW
7	B40006	Ball Swivel
8	B1202	Pole and axle
9	B2239	Washer, special, 7/8
10		Nut, 7/8 NF castellated
		Cotter pin, 5/32 x 1-1/4
11	B1203	Pin, 1-1/2 x 6-3/4
12		Capscrew, 1/2 x 1 NC
		Lockwasher, 1/2
13	B1204	Pin, 1 x 3-3/4

MIDDLE AND REAR SECTION OF FRONT FRAME



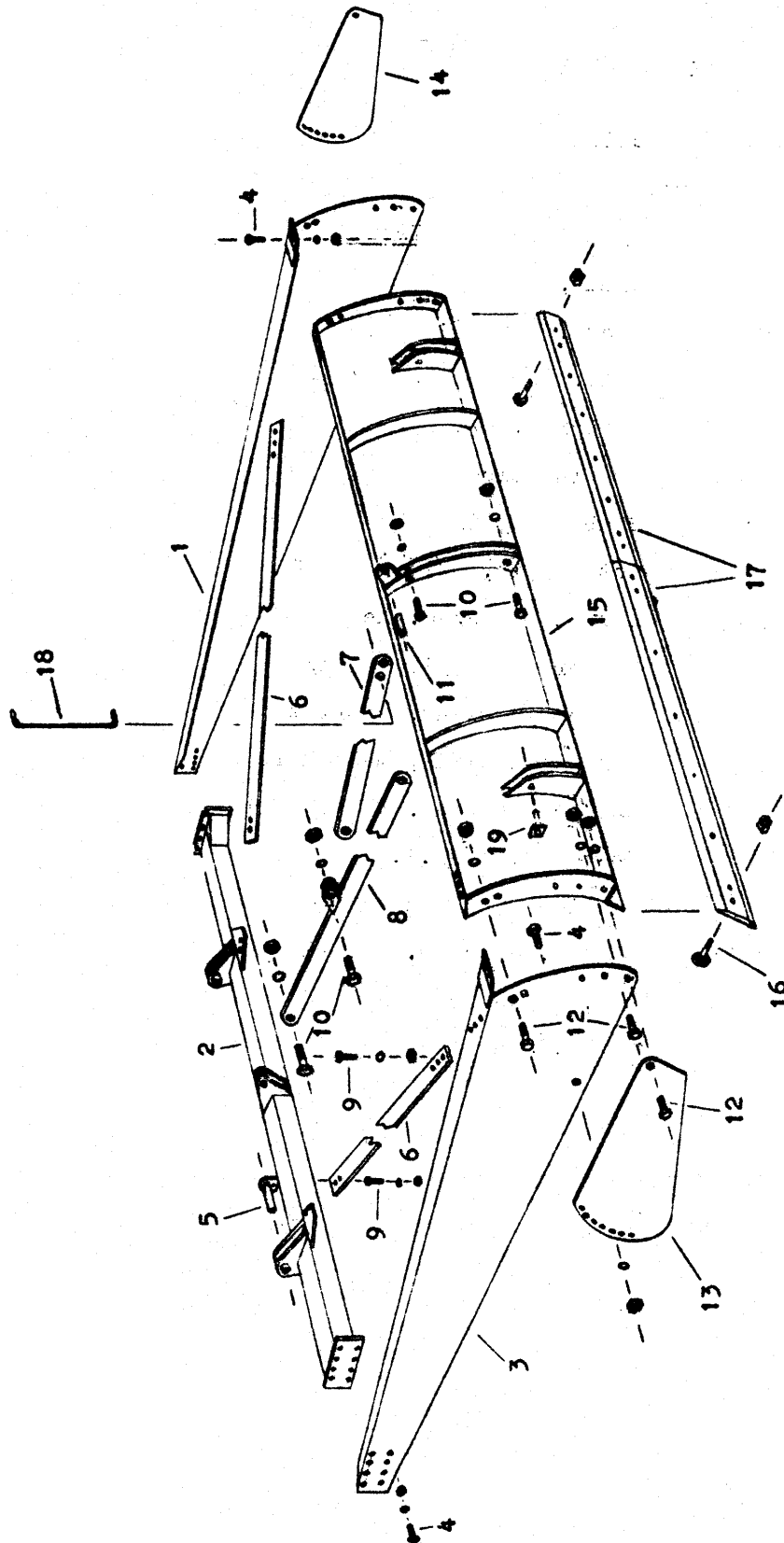
PARTS LIST

MIDDLE AND REAR SECTION OF FRONT FRAME

L-12 LAND LEVELER

Key No.	Part No.	Description
1	B1205	Frame, right mid-section of front frame
2	B1206	Frame, left mid-section of front frame
3		Bolt, 5/8 x 1-1/2 w/nut & LW (heat treated)
4		Capscrew, 3/4 x 5-1/2
5	B1223	Bearing Block Cap
6	B1230	Stabilizer frame
7		Cotter pin, 3/16 x 1-1/2
8	B1225	Pin, 1 x 3 w/sq. head Cotter pin, 3/16 x 1-1/2
9	B1226	Connecting link, complete
9A	B1227	Connecting link, male half
9B	B1228	Connecting link, female half
9C		Lock nut, 1" N. F.
10	B1224	Bearing block base
11	B2239	Washer, special, 7/8 flat
12		Nut, 7/8 NF castellated
13	B1210A	Frame, rear section of front frame

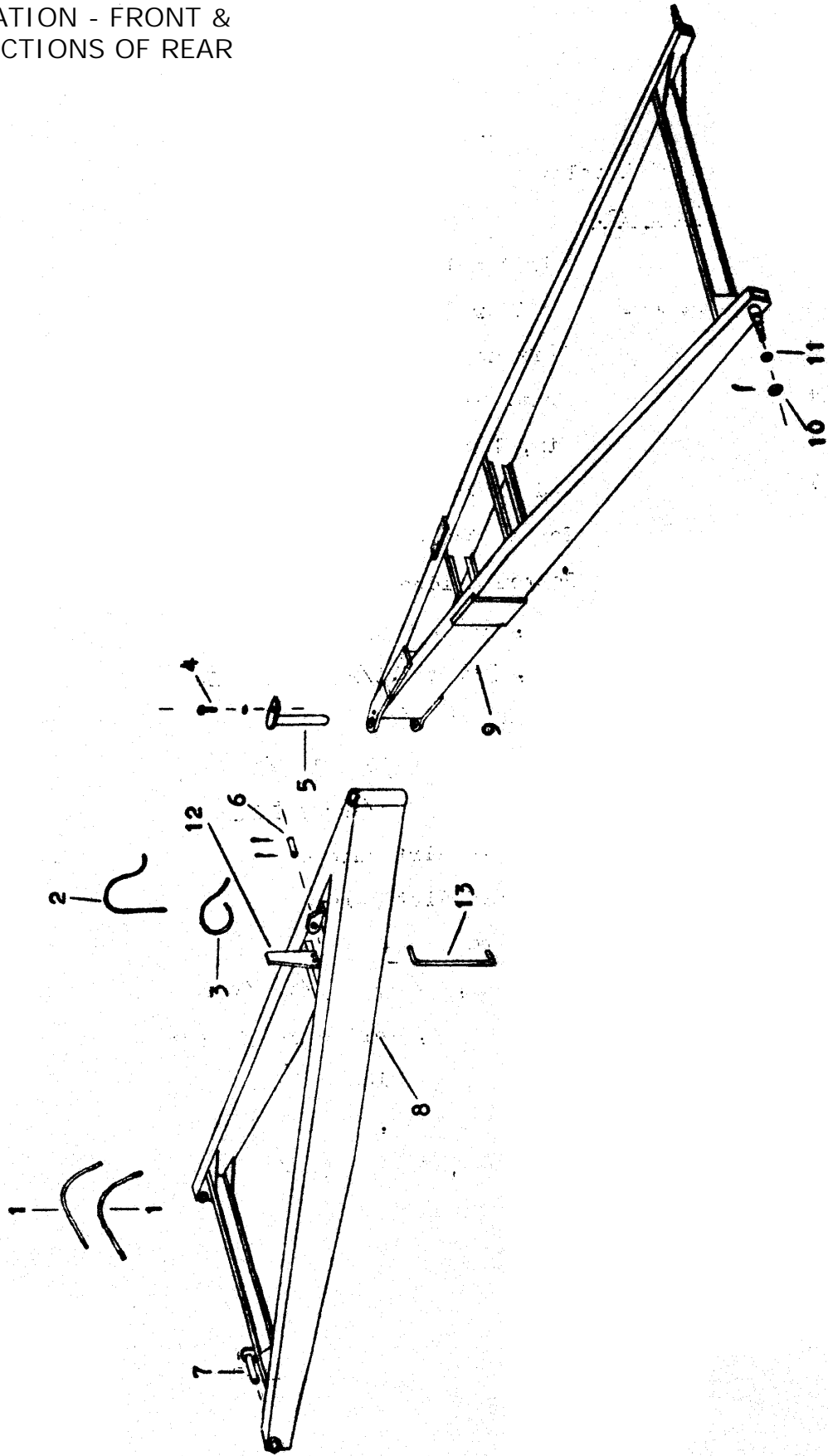
ILLUSTRATION - BOWL ASSEMBLY



PARTS LIST
BOWL ASSEMBLY
L-12 LAND LEVELER

Key No.	Part No.	Description
1	B1211	Right moldboard end plate
2	B1212A	Bowl cross member frame
3	B1213	Left moldboard end plate
4		Bolt, 5/8 x 1-1/2 w/nut & LW
5	B1204	Pin, 1 x 3-3/4
6	B1214	End plate brace, left & right same
7	B1215A	Top center moldboard brace
8	B1216A	Bottom moldboard brace
9		Bolt, 5/8 x 2 w/nut & LW
10		Bolt, 3/4 x 2-1/2 w/nut & LW
11	B1217	Pin, 1 x 3-1/2
		Cotter pin, 3/16 x 1-1/2
12		Bolt, 3/4 x 2 w/nut & LW
13	B1218	Moldboard dirt shield
14	B1218	Moldboard dirt shield
15	B1219A	Moldboard
16		Plow bolt, 5/8 x 1-3/4 w/nut
17	B1229	Cutting edge, left & right same
18	B1208A	Depth gauge indicator rod
19	B1225	Pin, 1 x 3 w/sq. head
		Cotter pin, 3/16 x 1-1/2

ILLUSTRATION - FRONT &
REAR SECTIONS OF REAR



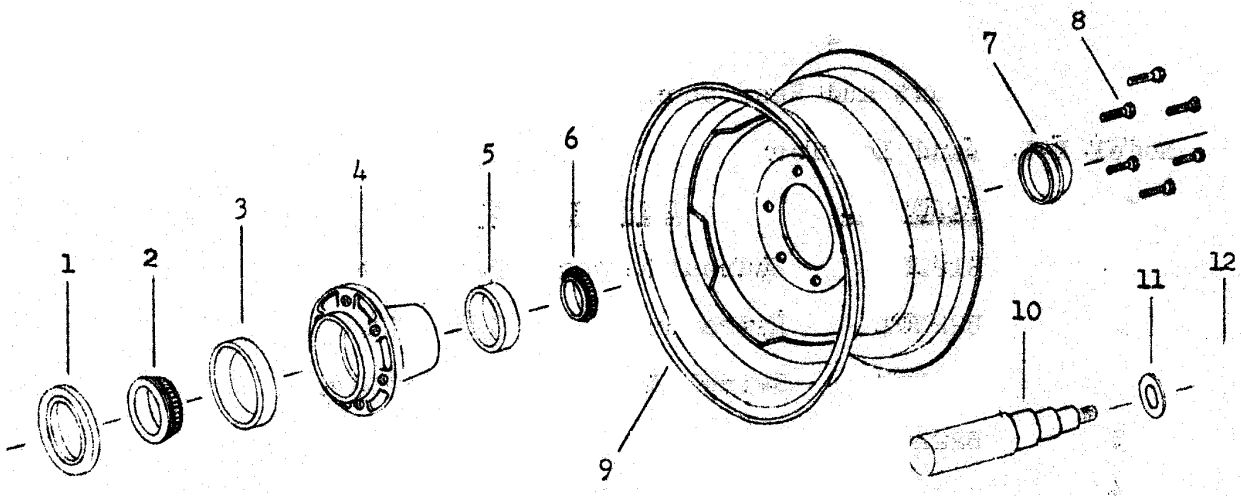
PARTS LIST

FRONT AND REAR SECTION OF REAR FRAME

L-12 LAND LEVELER

Key No.	Part No.	Description
1	B12H01	Hydraulic hose, 3/8 x 40
2	B22H01	Hydraulic hose, 3/8 x 24
	B22H04	Swivel Adapter, 3/8 straight
3	B22H01	Hydraulic hose, 3/8 x 24
4		Capscrew, 1/2 x 1 NC
5	B1220A	Pin, 1-1/2 x 14-1/4
6	B1217	Pin, 1 x 3-1/2
		Cotter pin, 3/16 x 1-1/2
7	B1203	Pin, 1-1/2 x 6-3/4
8	B1221A	Frame, front section of rear frame
9	B1222A	Frame, rear section of rear frame
10		Nut, 7/8 NF castellated
11	B2239	Washer, special, 7/8 flat
12	B1207A	Stationary depth gauge
13	B1208A	Depth gauge indicator rod

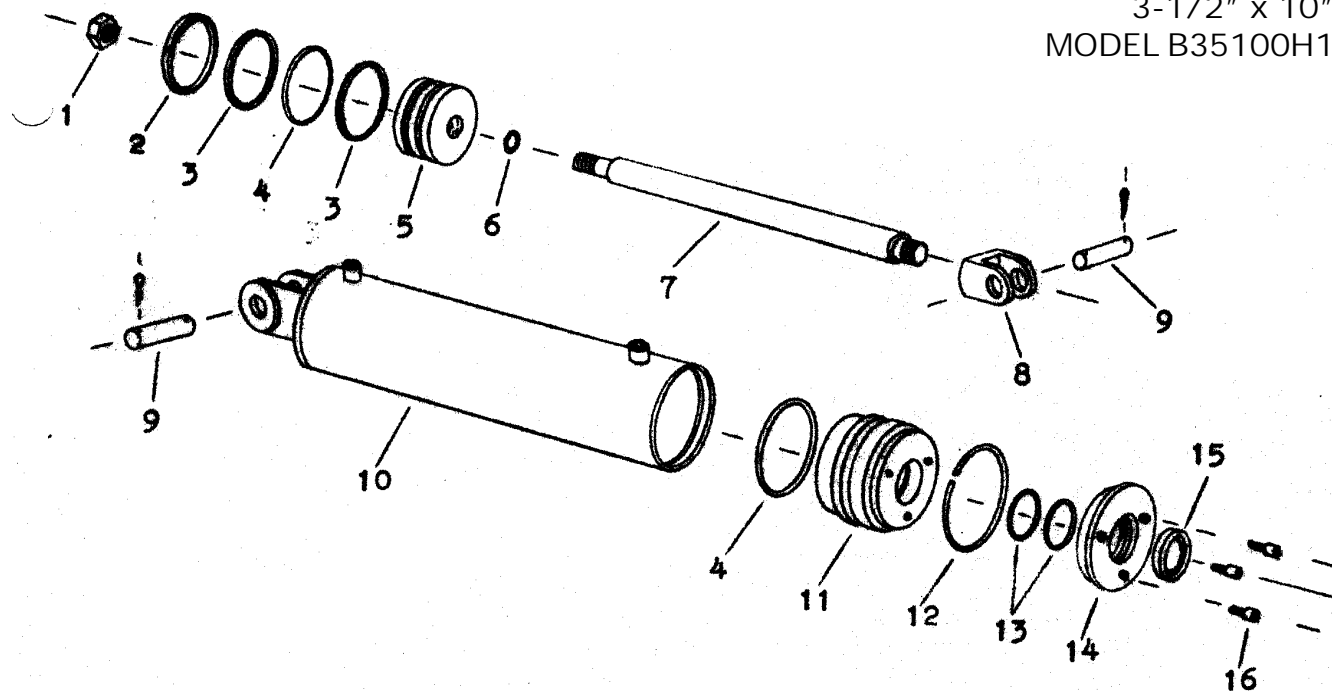
ILLUSTRATION - WHEEL, HUB & BEARING ASSEMBLY



PARTS LIST

Key No.	Part No.	Description
1	B2229	Grease seal
2	B2230	Bearing cone, inner
3	B2231	Bearing cup, inner
4	B2232	Hub, less bearings
5	B2233	Bearing cup, outer
6	B2234	Bearing cone, outer
7	B2235	Hub cap
8	B2236	Wheel bolt
9	B2237	Wheel, 14 x 6
	B3319	Wheel, 15 x 6 (optional)
10	B2238	Spindle
11	B2239	Washer, special, 7/8 flat
12		Nut, 7/8 NF castellated
		Cotter pin, 3/16 x 1-1/2

ILLUSTRATION - HYDRAULIC CYLINDER
 3-1/2" x 10"
 MODEL B35100H1



PARTS LIST

Key No.	Part No.	Description
1	B22H05	Piston nut, 3/4 NF
2	B22H06	Cast iron piston ring, 3-1/2 OD
3	B22H07	Piston backup washer, 3-1/2 OD
4	B22H08	Piston & static O-ring seal, 3-1/2 OD
5	B22H09	Piston, 3-1/2 OD
6	B22H10	Piston gasket, 3/4 ID
7	B12H02	Shaft, 1-1/2
8	B12H03	Clevis
9	B1217	Pin, 1 x 3-1/2
10	B12H04	Barrel assembly
11	B22H13	Head gland
12	B22H14	Retainer ring
13	B22H15	Shaft O-ring seal, 1-1/2 ID
14	B22H16	Head cap
15	B22H17	Wiper seal, 1-1/2 ID
16	B22H18	Socket head capscrew, 1/4 x 1
	B22H19	Packing kit, containing:
	1	B22H06
	2	B22H07
	2	B22H08
	1	B22H10
	1	B22H14
	2	B22H15
	1	B22H17