



BUCHLI MASTER PARTS BOOK

B-25 Scraper

ver 12-02

Ashland Industries Inc.
1115 Rail Drive
P.O. Box 717
Ashland, WI. 54806
Ph: 877-634-4622 *Toll Free*
Ph: 715-682-4622
Fx: 715-682-9717
www.ashlandind.com



INDEX PAGE

B-25 Scraper
B-25S Scraper

How to order parts:

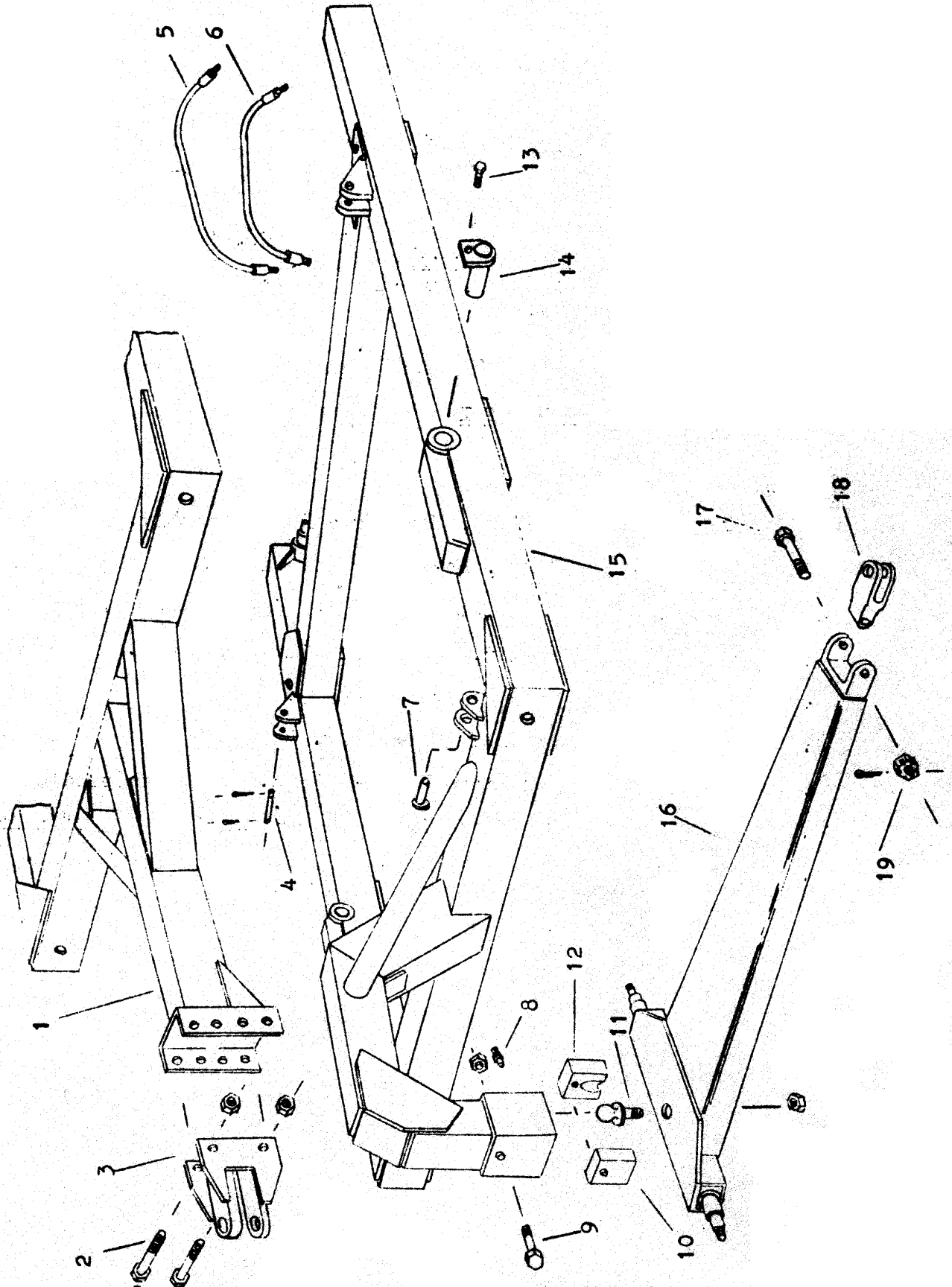
Be sure to state MODEL and SERIAL NO. of machine, PARTS NO., DESCRIPTION, and QUANTITY wanted.

Unless this is done, we cannot give you prompt service or send the correct parts.

I N D E X

<i>Page No.</i>	<i>Illustration & Parts List</i>
3 - 4	Frames, Hose and Axle Ass'y
5 - 6	Bucket, Apron and Cutting Edges
7 - 8	Actuating Assembly
9	Wheel, Hub, Bearing & Spindle Ass'y
10	Hyd. Cylinder, 3-1/2" x 16" Model 3516 H1
11	Hyd. Cylinder, 2-1/2" x 16" Model B2516 H1, high pressure (opt)

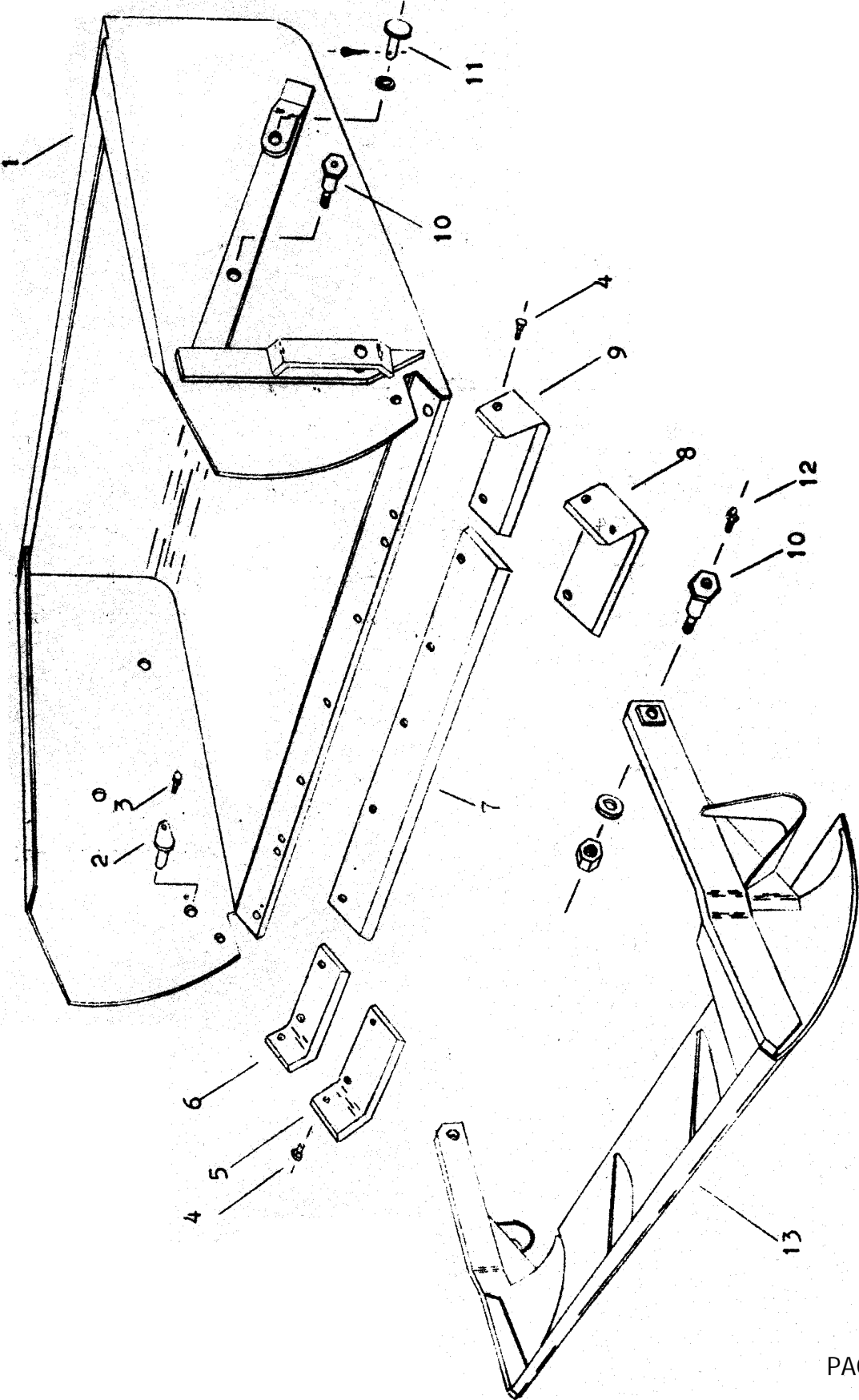
FRAMES, HOSE AND AXLE ASSEMBLY



PARTS LIST
FRAMES, HOSE AND AXLE ASSEMBLY
B-25/B-25S

Key No.	Part No.	Description
1	B2501	Frame, Two Wheel Model
2		Bolt, 5/8 x 6 w/nut & LW
3	B3304	Hitch
4	B2228	Pin, 1 x 4
5	B22H02	Hydraulic hose, 3/8 x 33
6	B22H01	Hydraulic hose, 3/8 x 24
	B22H03	Swivel adapter, 3/8" 90 degree
	B22H04	Swivel adapter, 2/8" straight
7	B2210	Pin, 1-1/4 x 2-5/8
8	B2206	Zerk, 1/8 NPT (straight long shank)
9		Bolt, 5/8 x 5-1/2 w/nut & LW
10	B2204	Cast socket half, front
11	B2203A	Ball swivel
		Nut, 1-1/4 NF
12	B2205	Cast socket half, rear w/zerk hole
13		Capscrew, 1/2 x 1 NC
14	B2502	Pin, 1-1/2 x 5-5/8
15	B2503	Frame, Four Wheel Model
16	B2202A	Pole and axle assembly
17		Bolt, 1 x 6 NF
18	B2207	Swivel hitch
19		Nut, 1" castellated
		Cotter pin, 3/16 x 1-1/2

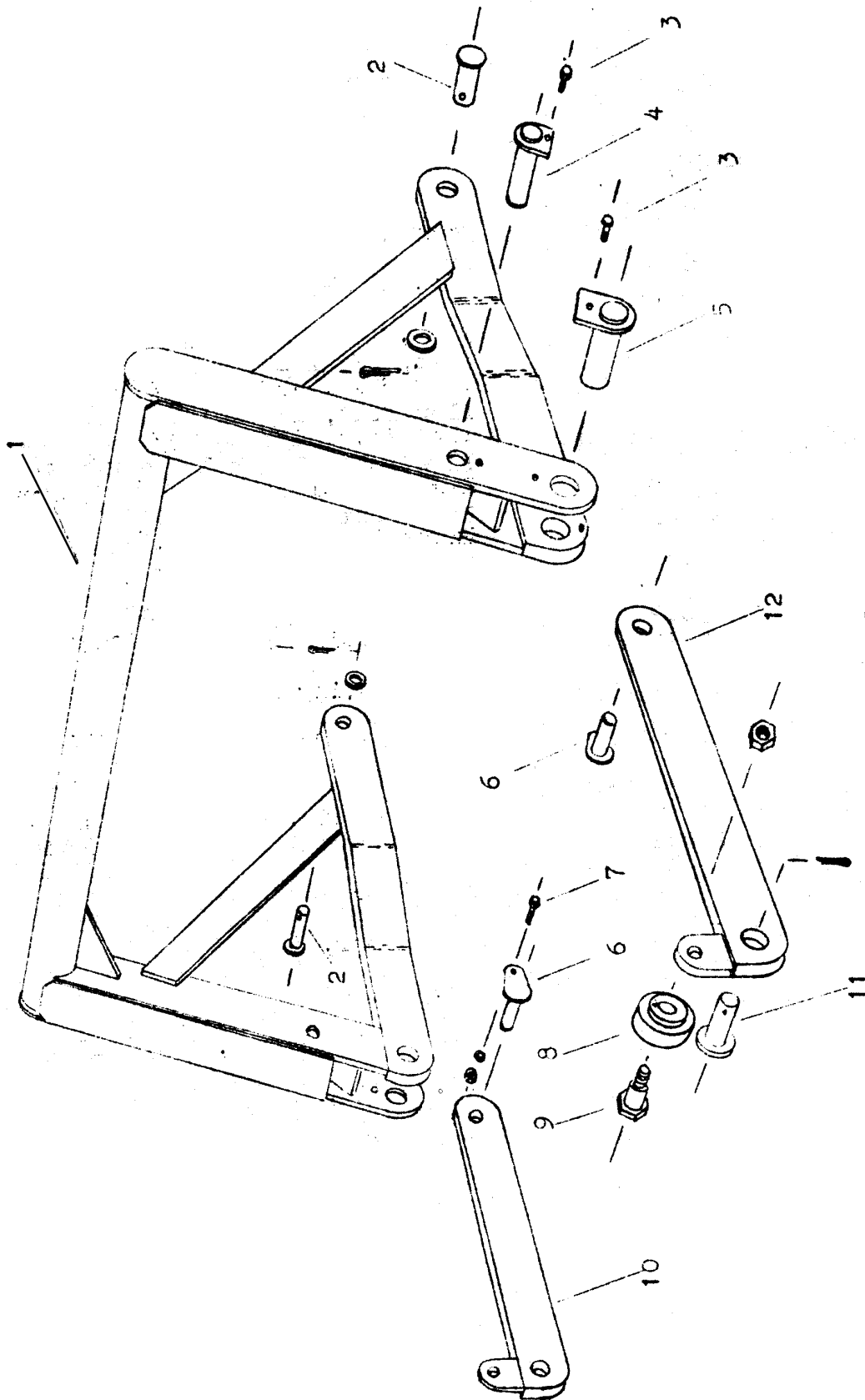
BUCKET, APRON & CUTTING EDGES



PARTS LIST
 BUCKET, APRON & CUTTING EDGES
 B-25/B-25S

Key No.	Part No.	Description
1	B2504	Bucket
2	B4505	Pin, 1-1/4 x 2-3/8 w/locking head
3		Bolt, 1/2 x 1 NC w/nut & LW
4		Plow bolt, 1/2 x 1-1/2 w/nut
		Plow bolt, 1/2 x 1-3/4 w/nut
5	B2225	Right cutting edge, 6" (optional)
6	B2224	Right cutting edge, 4"
7	B30021	Center cutting edge, 6"
8	B2222	Left cutting edge, 6" (optional)
9	B2221	Left cutting edge, 4"
	B2505	One piece cutting edge, 6" (optional-not shown)
10	B30020	Shoulder pin, 1-1/4 to 1 NF w/ctsk hole in head
		Nut, 1 NF
		Lockwasher, 1
11	B3310	Pin, 1-1/4 x 2-7/8
		Narrow rim washer, 1-1/4 ID
		Cotter pin, 1/4 x 2
12		Zerk, 1/8 NPT standard
13	B3317	Apron

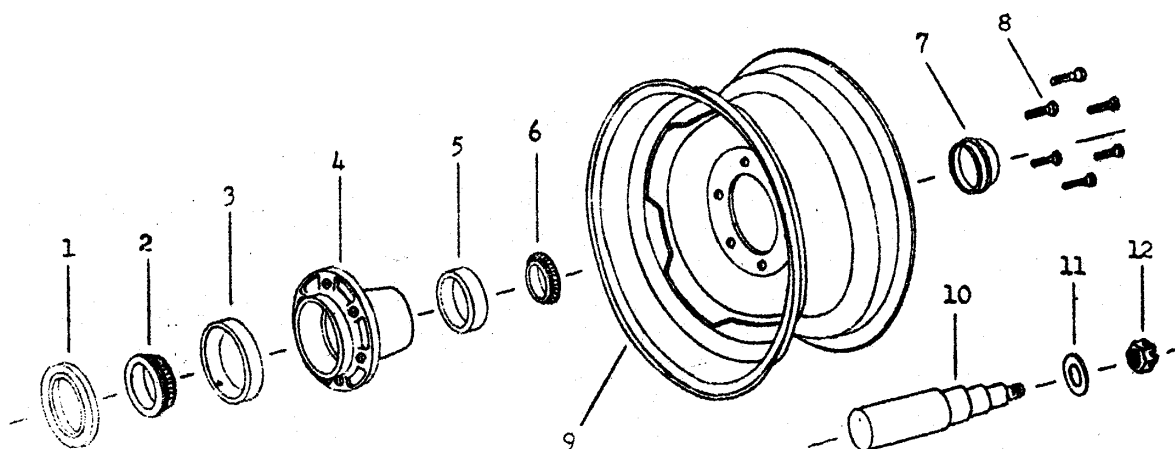
ACTUATING ASSEMBLY



PARTS LIST
ACTUATING ASSEMBLY
B-25/B-25S

Key No.	Part No.	Description
1	B2506	Actuating Frame
2	B3310	Pin, 1-1/4 x 2-7/8 Narrow rim washer, 1-1/4 ID Cotter pin, 1/4 x 2
3		Capscrew, 1/2 x 1 NC Lockwasher, 1/2
4	B3318	Pin, 1 x 5-5/8
5	B2502	Pin, 1-1/2 x 5-5/8
6	B4505	Pin, 1-1/4 x 2-3/8 w/locking head
7		Bolt, 1/2 x 1 NC w/nut & LW
8	B30002	Roller
9	B30003	Shoulder pin, 2-1/2 shoulder length Nut, 1 NF Lockwasher, 1
10	B3312	Actuating Arm, right
11	B2210	Pin, 1-1/4 x 2-5/8 Cotter pin, 1/4 x 2
12	B3313	Actuating Arm, left

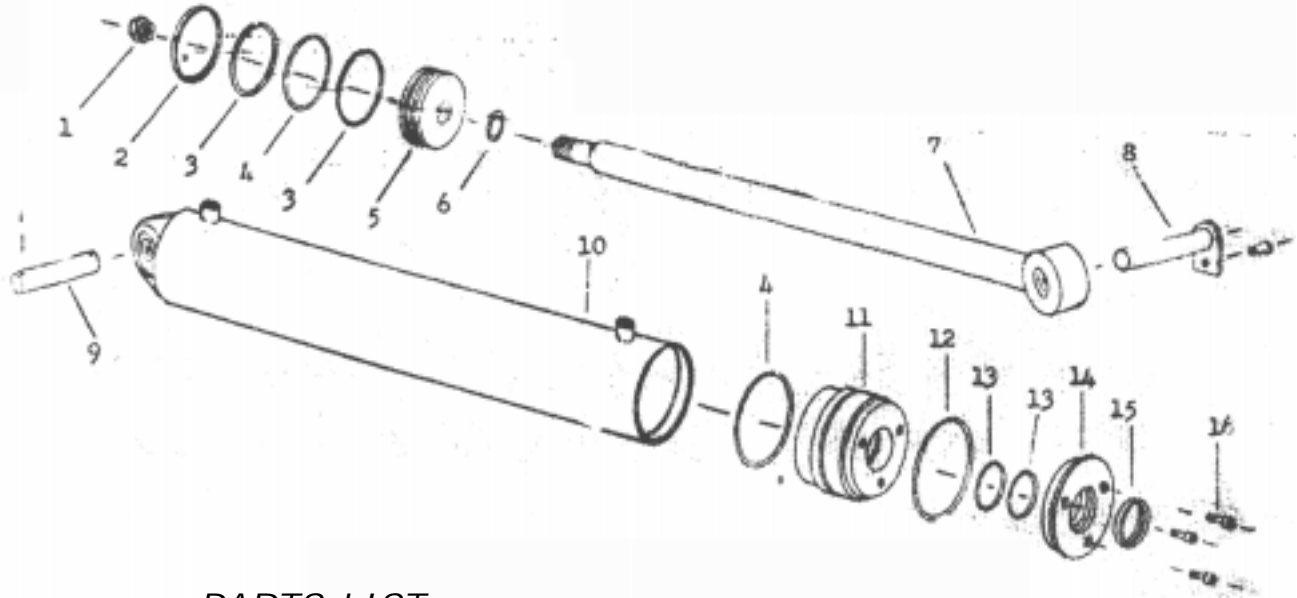
WHEEL, HUB, BEARING & SPINDLE ASS'Y



PARTS LIST

Key No.	Part No.	Description
1	B2229	Grease seal
2	B2230	Bearing cone, inner
3	B2231	Bearing cup, inner
4	B2232	Hub, less bearings
5	B2233	Bearing cup, outer
6	B2234	Bearing cone, outer
7	B2235	Hub cap
8	B2236	Wheel bolt
9	B2237	Wheel, 14 x 6
	B3319	Wheel, 15 x 6 (optional)
10	B2238	Spindle
11	B2239	Washer, special, 7/8 flat
12		Nut, 7/8 NF castellated
		Cotter pin, 3/16 x 1-1/2

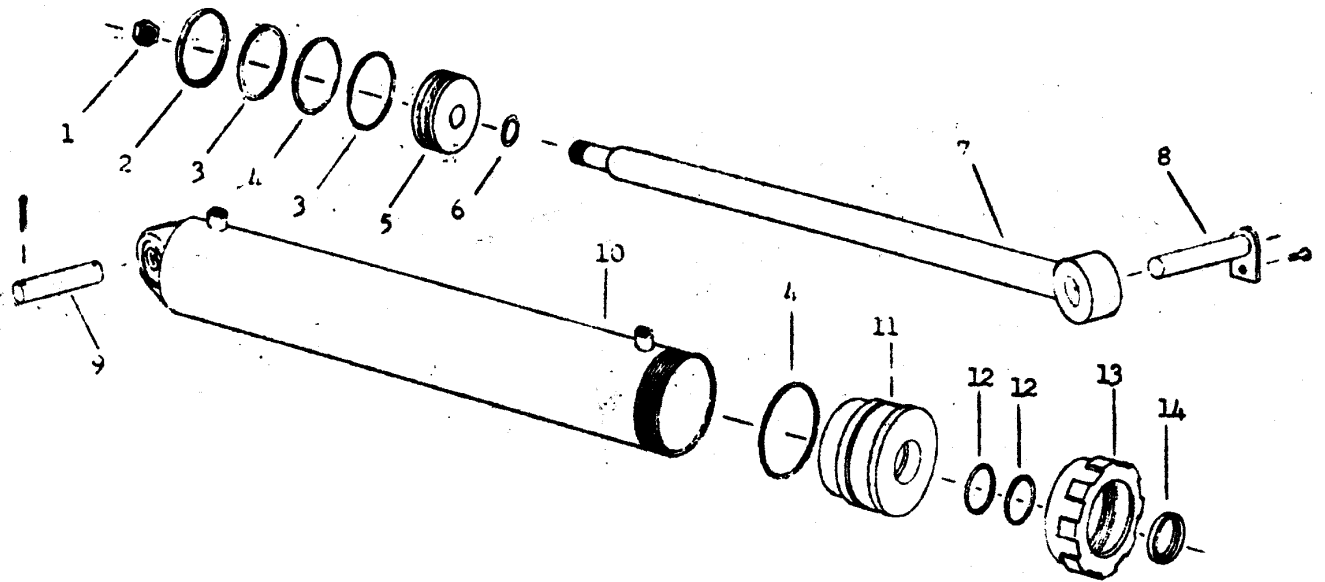
HYDRAULIC CYLINDER
3-1/2" x 16"
Model B3516 H1



PARTS LIST

Key No.	Part No.	Description
1	B22H05	Piston nut
2	B22H06	Cast iron piston ring
3	B22H07	Piston backup washer
4	B22H08	Piston & static O-ring seal
5	B22H09	Piston
6	B22H10	Piston gasket
7	B22H11	Shaft
8	B3318	Pin, 1 x 5-5/8"
		Capscrew, 1/2" x 1 NC
		Lockwasher, 1/2"
9	B2228	Pin, 1" x 4"
		Cotter pin, 3/16" x 1-1/2"
10	B22H12	Barrell assembly
11	B22H13	Head
12	B22H14	Retainer ring
13	B22H15	Shaft O-ring seal
14	B22H16	Head cap
15	B22H17	Wiper seal
16	B22H18	Socket head cap screw
	B22H19	Packing kit containing:
		1 B22H06
		2 B22H07
		2 B22H08
		1 B22H10
		1 B22H14
		2 B22H15
		1 B22H17

HYDRAULIC CYLINDER
 2-1/2" x 16" (High Pressure)
 Model B2516 H1 - Optional



PARTS LIST

Key No.	Part No.	Description
1	B22H05	Piston nut
2	B22H20	Cast iron piston ring
3	B22H21	Piston backup washer
4	B22H22	Piston & static O-ring seal
5	B22H23	Piston
6	B22H10	Piston gasket
7	B22H24	Shaft
8	B3318	Pin, 1 x 5-5/8"
		Capscrew, 1/2" x 1 NC
		Lockwasher, 1/2"
9	B2228	Pin, 1" x 4"
		Cotter pin, 3/16" x 1-1/2"
10	B22H25	Barrell assembly
11	B22H26	Head
12	B22H27	Shaft O-ring seal
13	B22H28	Head cap
14	B22H29	Wiper seal
	B22H30	Packing kit containing:
		1 B22H20
		2 B22H21
		2 B22H22
		1 B22H10
		2 B22H27
		1 B22H29