

Ashland **INDUSTRIES, INC.™**

*Quality
Equipment
Since
1953*

I-160 XL PARTS MANUAL

Version 4-04



Ashland Industries Inc.
1115 Rail Drive
P.O. Box 717
Ashland, WI. 54806
Ph: 877-634-4622 *Toll Free*
Ph: 715-682-4622
Fx: 715-682-9717
www.ashlandind.com

MEMBER
CIMA
CONSTRUCTION INDUSTRY
MANUFACTURERS ASSOCIATION



HOW TO ORDER PARTS:

IMPORTANT

Parts must be ordered through your local authorized ASHLAND dealer.

Be sure to state MODEL and SERIAL NUMBER of your machine, PART NUMBER, DESCRIPTION and QUANTITY needed.

Unless this is done, we cannot provide prompt service or assure shipment of the correct parts.



Ashland Industries weldable replacement parts are available to rebuild, modify or update your scraper to current factory specifications.

INDEX

| | |
|----------|--|
| Page 3. | Operators and Maintenance Instructions |
| Page 4. | Safety Guidelines |
| Page 5. | Illustration - Assembly |
| Page 6. | Illustration - Gooseneck Frame Assembly |
| Page 7. | Illustration - Apron Assembly |
| Page 8. | Illustration - Bowl and Frame Assembly |
| Page 9. | Parts List - Bowl and Frame |
| Page 10. | Illustration and Parts List - Push Off Gate Assembly |
| Page 11. | Illustration and Parts List - Pole and Axle Assembly |
| Page 12. | Illustration and Parts List - Front Wheel and Hub Assembly |
| Page 13. | Illustration and Parts List - Rear Wheel and Hub Ass'y. - Std. |
| Page 14. | Illustration and Parts List - Rear Wheel and Hub Ass'y. - Option |
| Page 15. | Illustration and Parts List - Hydraulic Cylinder 4" x 13" |
| Page 16. | Illustration and Parts List - Hydraulic Cylinder 5" x 20" |
| Page 17. | Illustration - Hydraulic Cylinder 4-1/2" x 60" |
| Page 18. | Parts List - Hydraulic Cylinder 4-1/2" x 60" |
| Page 19. | Illustration - Sequence Valve |
| Page 20. | Sequence Valve Adjustment Instructions |
| Page 21. | Warranty Statement |

OPERATORS AND MAINTENANCE INSTRUCTIONS

This scraper is a durable piece of equipment and with proper care will yield many years of trouble free operation. The scraper requires a power source with TWO 4 way (double acting) hydraulic control valves.

The scraper should be greased at all points where grease fittings are provided. Connect hydraulic hoses to the tractor and retract lift cylinders to **REMOVE TRANSPORT LOCK PINS** (point A), then extend and retract all cylinders several times to force out any air from the hydraulic cylinders and lines. Check the oil levels in the tractor hydraulic system and add to maintain the proper level. Care should be used when adding oil or when disconnecting any oil line to keep all dirt out of the oil as dirt is a major factor in the failure of hydraulic components.

When the scraper is placed into operation, the operator will have to "feel out" the amount of depth of cut to obtain maximum loading efficiency. This is usually accomplished by taking a lesser and more uniform cut; however, some soil conditions such as loose sand may require a "pumping action" obtained by taking successive deep cuts and lifting out of cut as the tractor begins to lose power or traction.

1. After 10 hours work, all bolts should be checked and tightened if necessary.
2. Every 10 hours all grease fittings should be lubricated.
3. After 50 hours work, all bolts should be rechecked and tightened if necessary. Check wheel bearings and adjust if necessary.
4. After 300 hours work, clean and repack wheel bearings and replace, if necessary, cutting edges, worn pins, etc.



SAFETY SIGNAL WORDS

Note the use of the signal words *DANGER*, *WARNING* and *CAUTION* with the safety messages. The appropriate signal word for each has been selected using the following guidelines:

DANGER: Indicates an imminently hazardous situation that, if not avoided, will result in death or serious injury. This signal word is to be limited to the most extreme situations typically for machine components which, for functional purposes, cannot be guarded.



WARNING: Indicates a potentially hazardous situation that, if not avoided, could result in death or serious injury, and includes hazards that are exposed when guards are removed. It may also be used to alert against unsafe practices.



CAUTION: Indicates a potentially hazardous situation that, if not avoided, may result in minor or moderate injury. It may also be used to alert against unsafe practices.



GENERAL SAFETY GUIDELINES

Safety of the operator is one of the main concerns in designing and developing a new piece of equipment. Designers and manufacturers build in as many safety features as possible. However, every year many accidents occur which could have been avoided by a few seconds of thought and a more careful approach to handling equipment. You, the operator, can avoid many accidents by observing the following precautions in this section. To avoid personal injury, study the following precautions and insist those working with you, or for you, follow them.

Replace any CAUTION, WARNING, DANGER or instruction safety decal that is not readable or is missing. Location of such decals is indicated in this booklet.

Do not attempt to operate this equipment under the influence of drugs or alcohol.

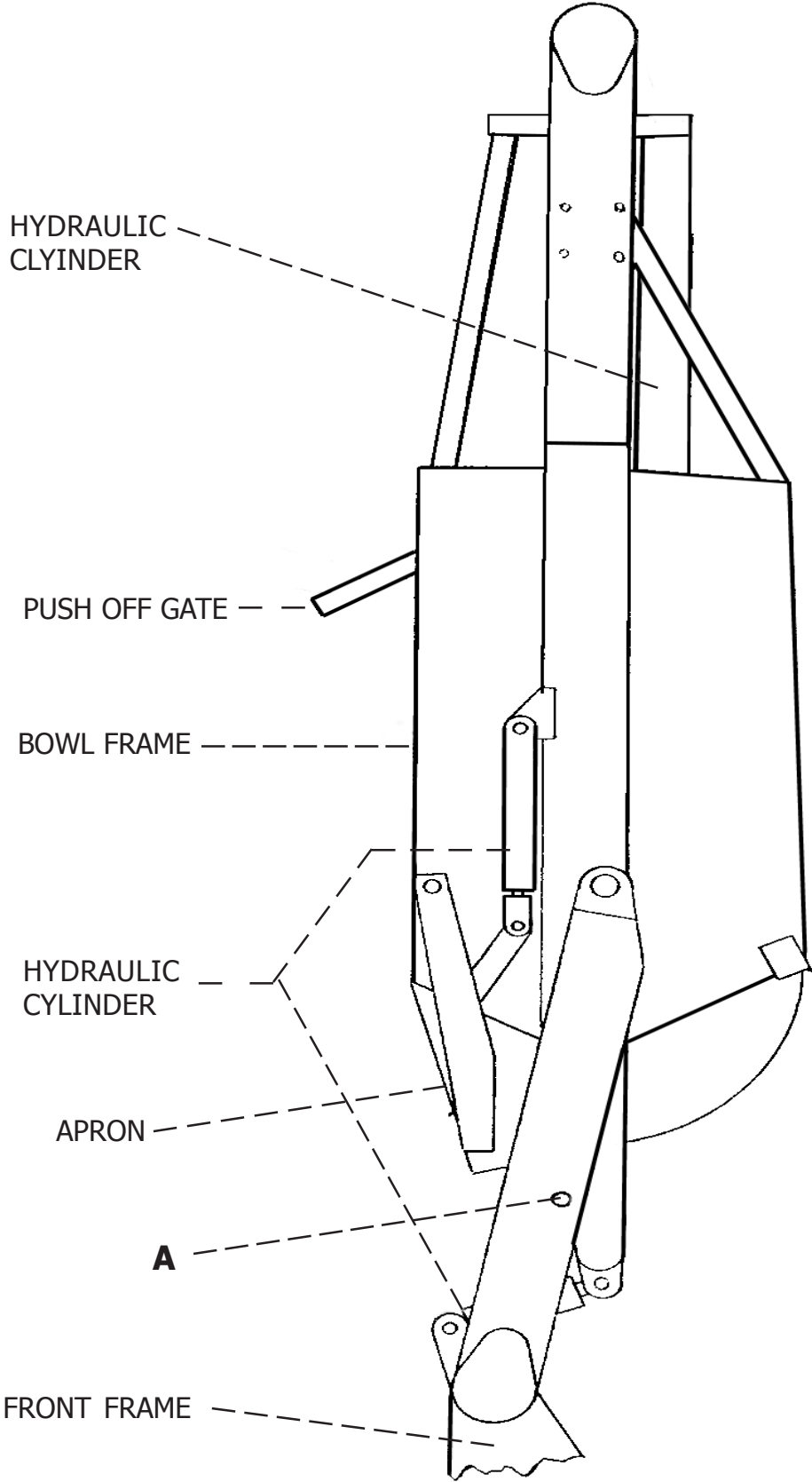
Review the safety instructions with all users annually.

This equipment is dangerous to children and persons unfamiliar with its operation. The operator should be a responsible adult familiar with farm machinery and trained in this equipment's operations. **Do not allow persons to operate or assemble this unit until they have read this manual and have developed a thorough understanding of the safety precautions and of how it works.**

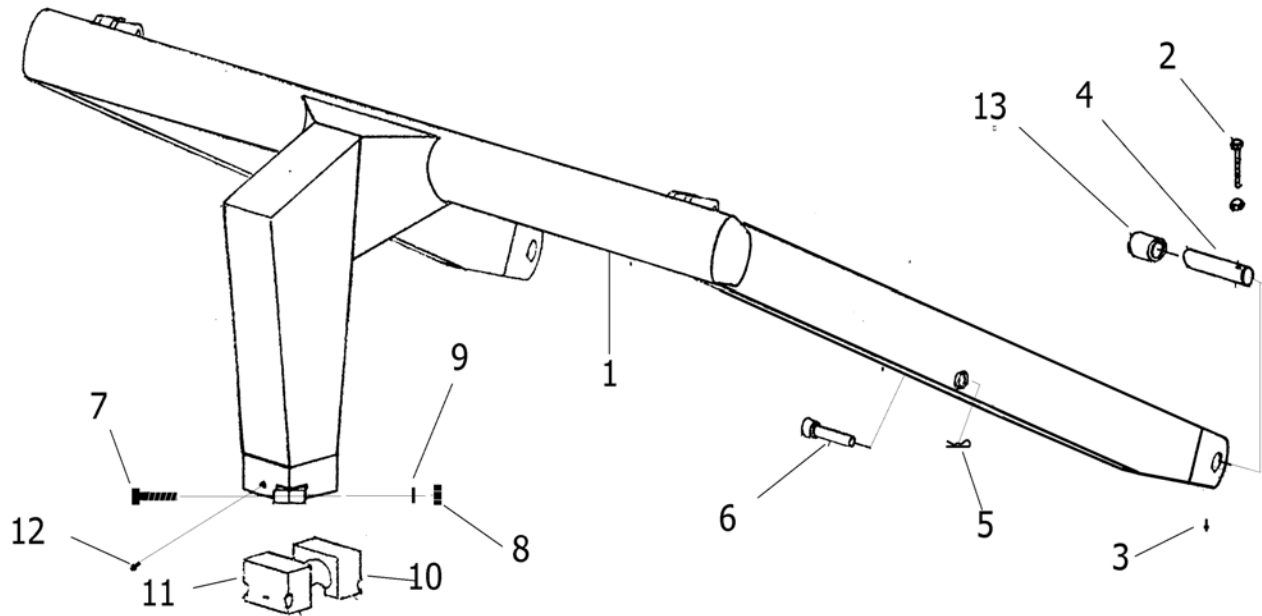
To prevent injury or death, use a tractor equipped with a Roll Over Protective System (ROPS). Do not paint over, remove or deface any safety signs or warning decals on your equipment. Observe all safety signs and practice the instructions on them.

Never exceed the limits of a piece of machinery. If its ability to do a job, or to do so safely, is in question - **DON'T TRY IT.**

ILLUSTRATION * ASSEMBLY



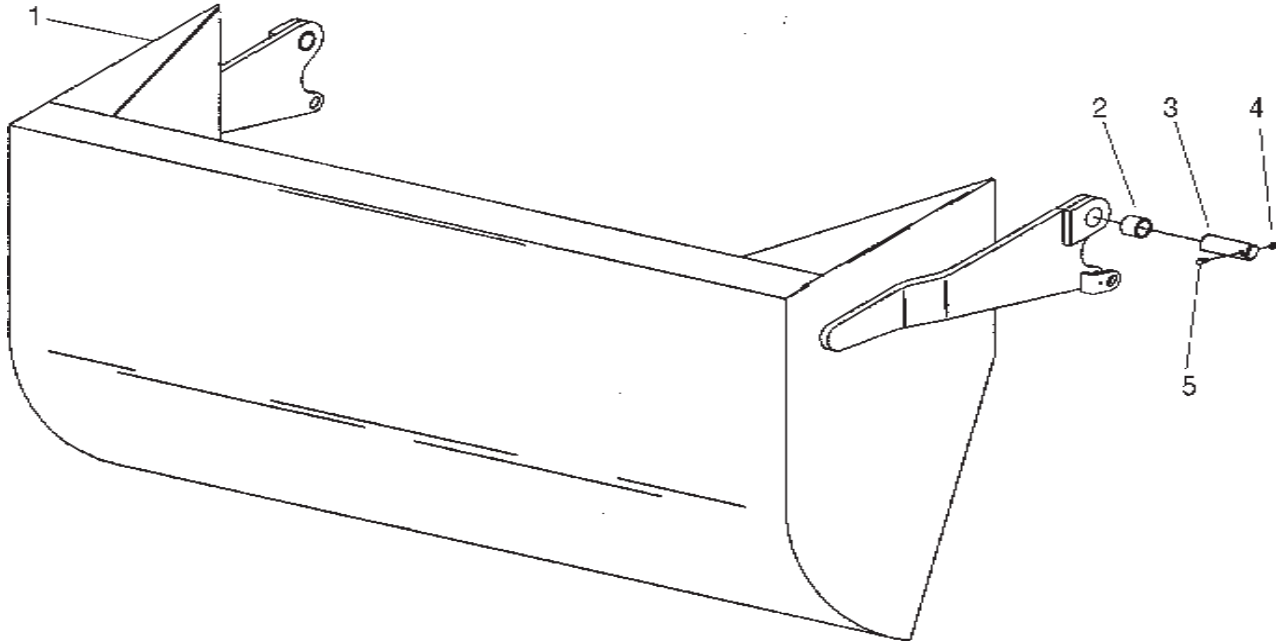
GOOSENECK FRAME ASSEMBLY



PARTS LIST GOOSENECK FRAME ASSEMBLY MODEL I-160

| KEY NO. | PART NO. | DESCRIPTION |
|----------------|-----------------|--------------------------------------|
| 1. | A14001B | Gooseneck Frame |
| 2. | AFB-00054 | Bolt, 1/2" NC x 3-1/2" Lg. |
| 3. | 14505 | Grease Zerk - Straight |
| 4. | A10152A | Pin, Frame Attach |
| 5. | ----- | Hair Pin |
| 6. | A10153 | Pin, Transport Lock |
| 7. | AFB-00025 | Bolt, 7/8"NF x 5" Lg. Grade 8 |
| 8. | 7597 | Nut, 7/8"NF |
| 9. | 8125 | Lockwasher 7/8" |
| 10. | A14002 | Cast Socket Half - Rear |
| 11. | A14003 | Cast Socket Half - Front w/Zerk Hole |
| 12. | A2206 | Grease Zerk - Long Shank |
| 13. | A14039 | Bushing, 2-3/8" OD x 2" ID x 2" Long |

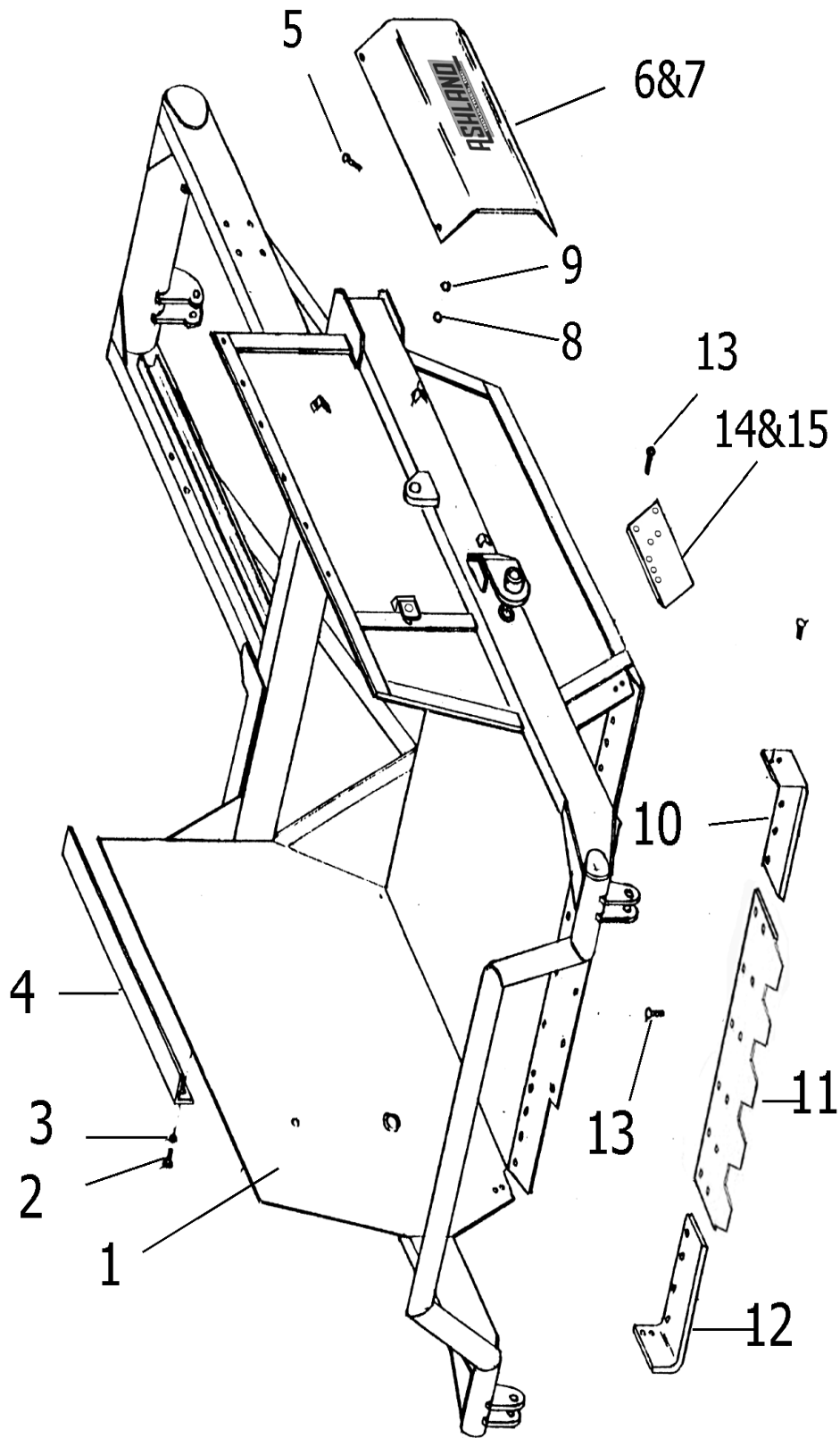
APRON ASSEMBLY



PARTS LIST APRON ASSEMBLY MODEL I-160 XL

| KEY NO. | PART NO. | DESCRIPTION |
|----------------|-----------------|--------------------------------------|
| 1. | | Apron Model I-160 XL |
| 2. | A16027 | Bushing: 2" OD x 1-1/2" ID x 2" Long |
| 3. | A123337 | Pin: 1-1/2" x 5-3/8" |
| 4. | 7450 | Nut: 3/8" NC |
| 5. | AFB-00049 | Bolt: 3/8" NC x 3" |

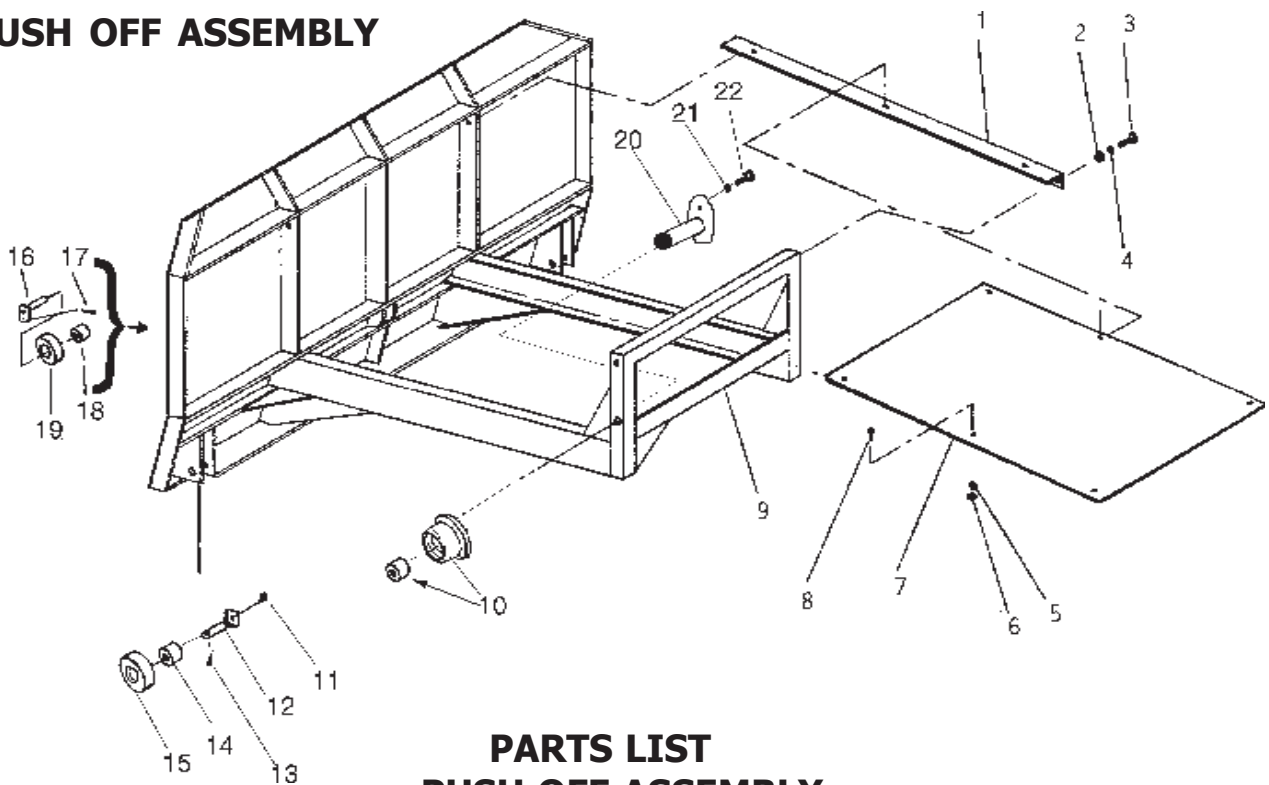
BOWL and FRAME ASSEMBLY



PARTS LIST
BOWL and FRAME ASSEMBLY
MODEL I-160 XL SCRAPER

| <u>KEY NO.</u> | <u>PART NO.</u> | <u>DESCRIPTION</u> |
|----------------|--|--|
| 1. | | Bowl and Frame, Model I-160 XL - w/Standard rear Tires Bowl and Frame, Model I-160 XL - w/29.5 X 25 rear Tires |
| 2. | ----- | Capscrew 5/8"NC x 1-1/4" Lg. |
| 3. | ----- | Lockwasher 1/2" |
| 4. | A17504 | Gate Containment Angle |
| 5. | AFB-00034 | Bolt 3/8"NC x 1" Lg. |
| 6. | A10157 | Cylinder Guard - Left Hand |
| 7. | A10158 | Cylinder Guard - Right Hand |
| 8. | 7450 | Nut 3/8" NC |
| 9. | 8078 | Lockwasher 3/8" |
| 10. | A123332L PB9P-NC-088-0275 AFN-00019 | Left Cutting Edge Plow Bolt: 7/8 NC X 2-3/4" -> 6 Required Nut: 7/8" NC -> 6 Required |
| 11. 13. | A123330SER PB9P-NC-088-0275 AFN-00019 | Center Cutting Edge, Serrated Plow Bolt: 7/8 NC X 2-3/4" -> 12 Required Nut: 7/8" NC -> 12 Required |
| 12. | A123332R PB9P-NC-088-0275 AFN-00019 | Right Cutting Edge Plow Bolt: 7/8 NC X 2-3/4" -> 6 Required Nut: 7/8" NC -> 6 Required |
| 14. | A123338L PB9P-NC-088-0275 PB9P-NC-088-0225 AFN-00019 AFN-00026 | (Optional) Left Shaver Bit Plow Bolt: 7/8 NC X 2-3/4" -> 5 Required Plow Bolt: 7/8 NC X 2-1/4" -> 2 Required Nut: 7/8" NC -> 5 Required Nut: 7/8" NC Jam -> 2 Required |
| 15. | A123338R PB9P-NC-088-0275 PB9P-NC-088-0225 AFN-00019 AFN-00026 | (Optional) Right Shaver Bit Plow Bolt: 7/8 NC X 2-3/4" -> 5 Required Plow Bolt: 7/8 NC X 2-1/4" -> 2 Required Nut: 7/8" NC -> 5 Required Nut: 7/8" NC Jam-> 2 Required |

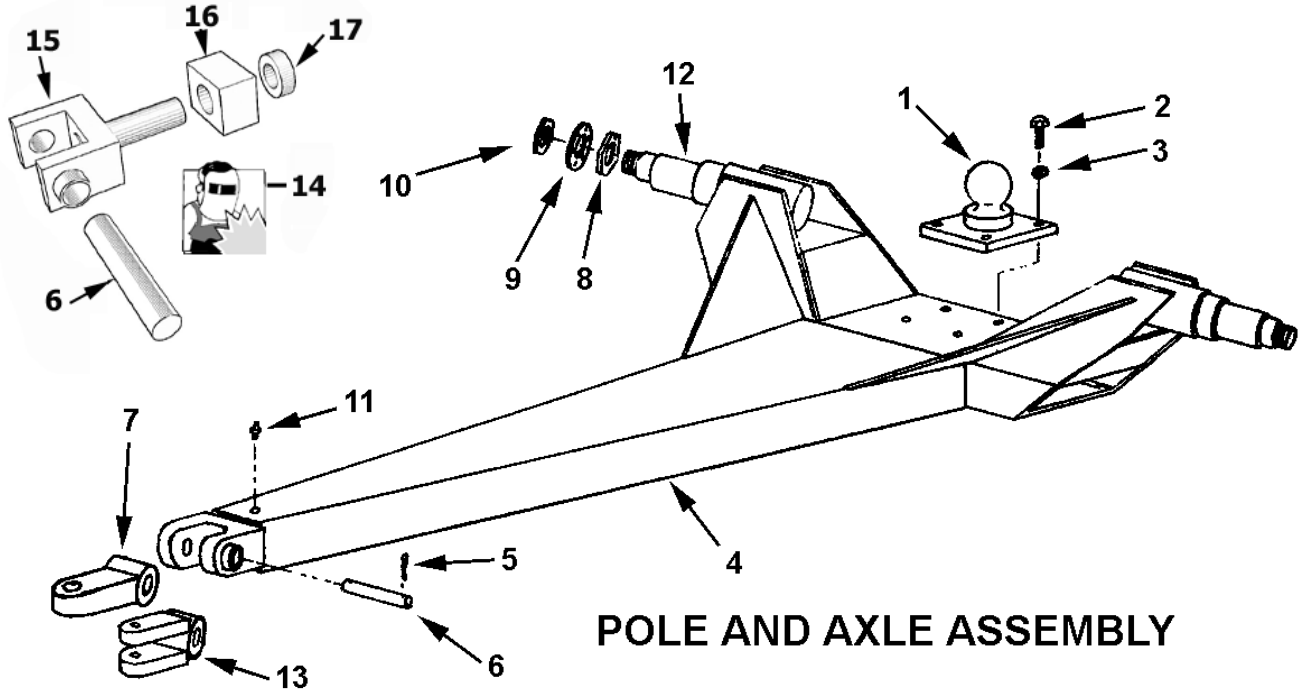
PUSH OFF ASSEMBLY



PARTS LIST PUSH OFF ASSEMBLY MODEL I-160 XL

| <u>KEY NO.</u> | <u>PART NO.</u> | <u>DESCRIPTION</u> |
|----------------|-----------------|-------------------------------------|
| 1. | A14022 | Brace |
| 2. | AFN-00006 | Nut: 3/4" NC |
| 3. | AFB-00037 | Bolt: 3/4" NC x 2" Lg. |
| 4. | AFW-00002 | Lockwasher: 3/4" |
| 5. | 8078 | Lockwasher: 3/8" |
| 6. | 7450 | Nut: 3/8" NC |
| 7. | A14023 | Dirt Shield |
| 8. | AFB-00034 | Bolt: 3/8 NC x 1" Lg. |
| 9. | A16024 | Pushoff Gate, Model I-160 |
| 10. | A123306 | Roller: Rear Gate |
| 10A. | A123307 | Bushing |
| 11. | AHF-00028 | Grease Fitting: 1/8" NPT -90 degree |
| 12. | A6007A | Pin: 1-1/4" x 4-1/8" Lg. |
| 13. | AFP-00001 | Cotter Pin: 1/4 X 3-1/2" |
| 14. | A10163 | Bushing: 1-3/4" OD x 1-1/4" ID |
| 15. | A10164 | Roller: 3-1/2 OD X 1-3/4 ID |
| 16. | A123288 | Pin: 1-1/4 X 3-1/4" Tab Head |
| 17. | 7036 | Bolt: 1/2 NC X 2" |
| 18. | A10163 | Bushing: 1-3/4" OD x 1-1/4" ID |
| 19. | A10164 | Roller: 3-1/2 OD X 1-3/4 ID |
| 20. | A123305 | Pin: 1-1/4 X 2-3/4" |
| 21. | 8100 | Lockwasher: 1/2" |
| 22. | AFB-00033 | Bolt: 1/2 NC X 2-1/2" |

POLE and AXLE ASSEMBLY

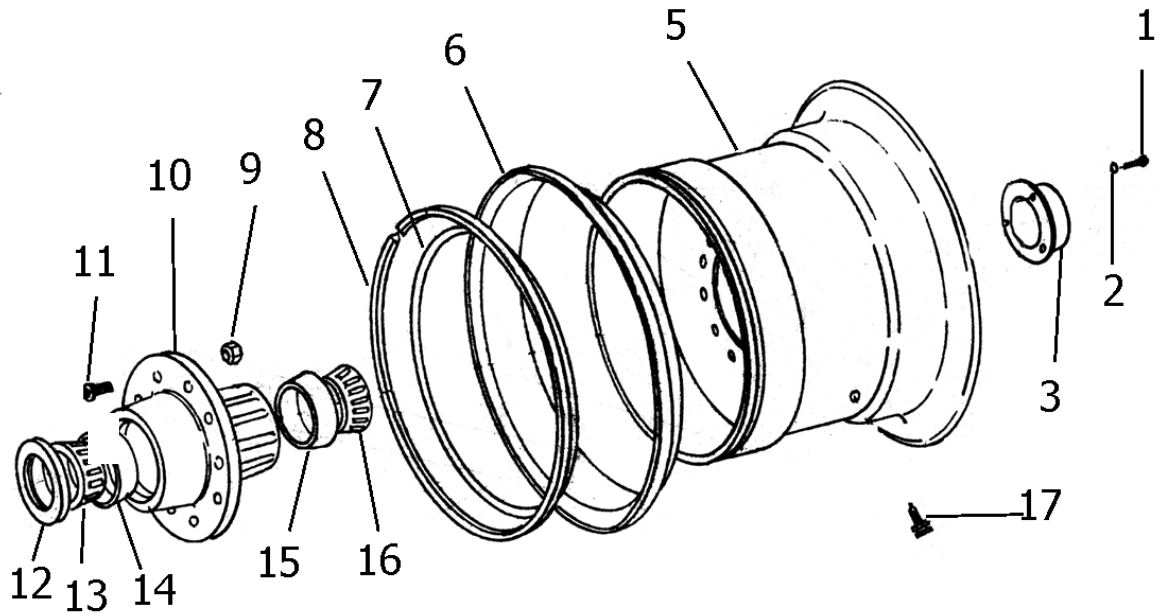


POLE AND AXLE ASSEMBLY

PARTS LIST POLE and AXLE ASSEMBLY MODEL I-160 XL

| <u>KEY NO.</u> | <u>PART NO.</u> | <u>DESCRIPTION</u> |
|----------------|-----------------|--|
| 1. | A14017 | Ball Swivel |
| 2. | AFB-00018 | Bolt 1" NC x 3" Long |
| 3. | AFW-00006 | Lockwasher 1" |
| 4. | A14018 | Pole |
| 5. | ----- | Cotter Pin 5/16" x 3" Long |
| 6. | A14019 | Pin 1-3/4" x 7-3/8" Long |
| 7. | A17510 | Swivel Hitch Single Lip |
| 8. | A10172 | Nut with Lock Pin |
| 9. | A10049A | Lock Collar |
| 10. | A10048 | Spindle Nut |
| 11. | 14505 | Grease Fitting |
| 12. | A14021 | Spindle (weld on) |
| 13. | A17511 | Swivel Hitch, Double Lip (optional) |
| 14. | A123232 | Yoke hitch rebuild kit - includes thrust block, thrust collar, yoke, cross shaft |
| 15. | A123232-3 | Swivel Yoke |
| 16. | A123232-2A | Swivel Block (before serial #17805) |
| | A123232-2 | Swivel Block (serial #17805 and above) |
| 17. | A123232-1 | Retaining Collar |

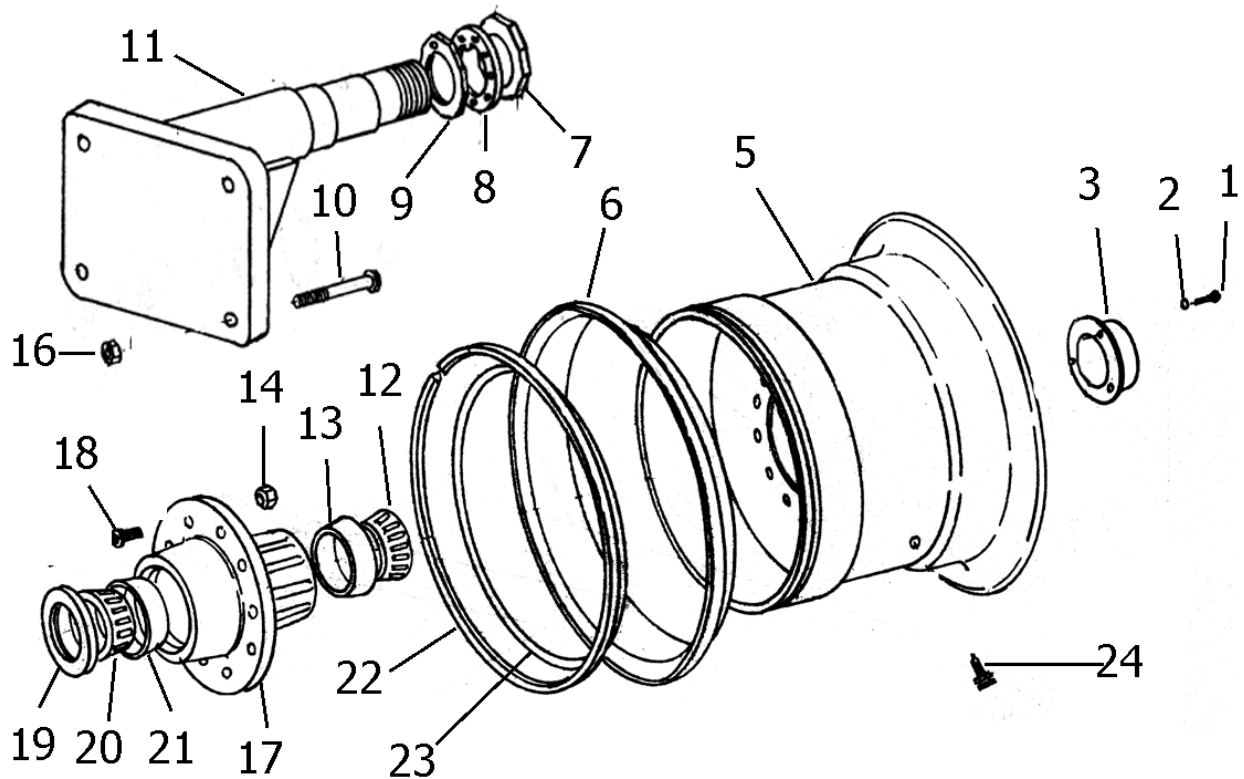
FRONT WHEEL and HUB ASSEMBLY



PARTS LIST FRONT WHEEL and HUB ASSEMBLY MODEL I-160 XL

| <u>KEY NO.</u> | <u>PART NO.</u> | <u>DESCRIPTION</u> |
|----------------|-----------------|-------------------------------|
| 1. | AFB-00020 | Bolt 5/16" NC x 3/4" Lg. |
| 2. | 8070 | Lockwasher 5/16" |
| 3. | A14004 | Hub Cap |
| 5. | A14006A | Wheel 14" x 25" |
| 6. | A14007A | Side Ring for 14" x 25" Wheel |
| 7. | A14008 | "O" Ring |
| 8. | A14009 | Lock Ring |
| 9. | A10046 | Lug Nut |
| 10. | A14010 | Hub |
| 11. | A10176 | Stud |
| 12. | A14011 | Grease Seal (CR 42624) |
| 13. | A14012 | Bearing Cone (Timken 749) |
| 14. | A14013 | Bearing Cup (Timken 742) |
| 15. | A14014 | Bearing Cup (Timken 632) |
| 16. | A14015 | Bearing Cone (Timken 644) |
| 17. | A14016 | Valve Stem |

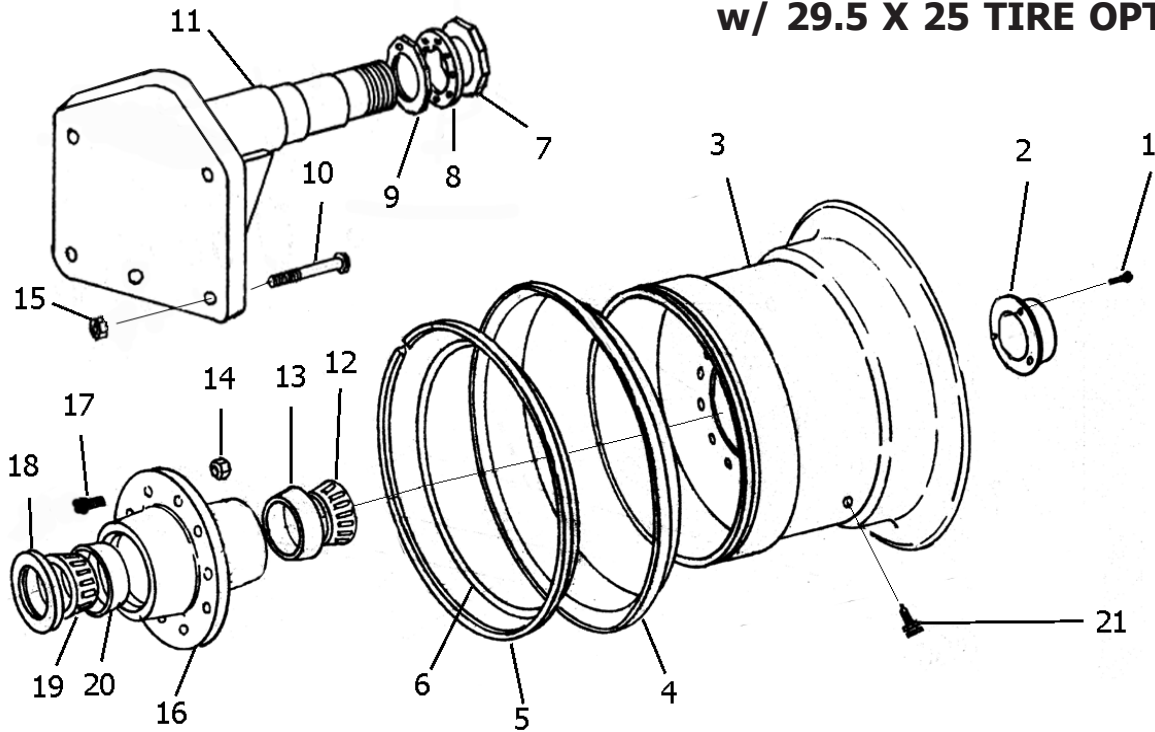
REAR WHEEL and HUB ASSEMBLY - STANDARD



PARTS LIST REAR WHEEL and HUB ASSEMBLY - STANDARD MODEL I-160 XL

| <u>KEY NO.</u> | <u>PART NO.</u> | <u>DESCRIPTION</u> |
|----------------|-----------------|-----------------------------|
| 1. | AFB-00020 | Bolt 5/16" NC x 3/4" Lg. |
| 2. | 8070 | Lockwasher 5/16" |
| 3. | A14004 | Hub Cap |
| 5. | A14035 | Wheel 17" x 25" |
| 6. | A14036 | Side Ring |
| 7. | A10048 | Spindle Nut |
| 8. | A10049A | Lock Collar |
| 9. | A10172 | Nut with Lock Pin |
| 10. | AFB-00024 | Bolt 1" NF x 7" Lg. |
| 11. | A14037 | Spindle |
| 12. | A14015 | Bearing Cone (Timken 644) |
| 13. | A14014 | Bearing Cup (Timken 632) |
| 14. | A10046 | Lug Nut |
| 16. | AFN-00001 | Nut 1" NF Top Lock |
| 17. | A14010 | Hub |
| 18. | A10176 | Stud |
| 19. | A14011 | Grease Seal (CR 42624) |
| 20. | A14012 | Bearing Cone (Timken 749) |
| 21. | A14013 | Bearing Cup (Timken 742) |
| 22. | A14038 | Lock Ring |
| 23. | A14008 | "O" Ring |
| 24. | A14016 | Valve Stem |

REAR WHEEL and HUB ASSEMBLY w/ 29.5 X 25 TIRE OPTION

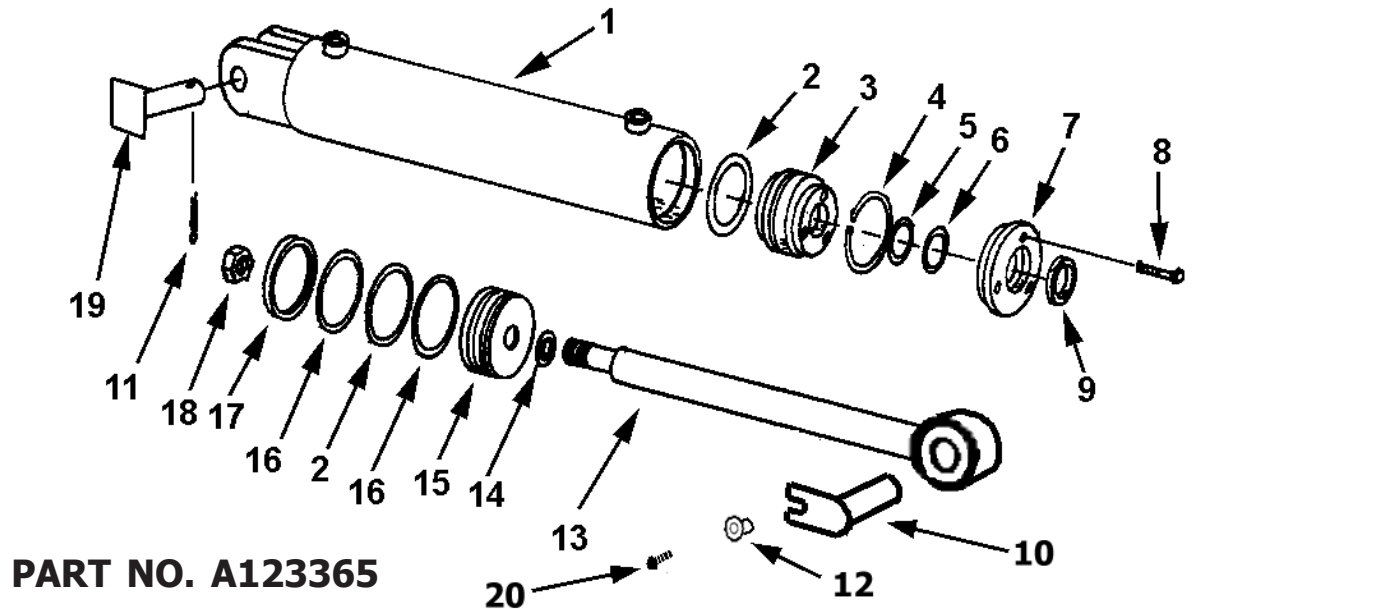


PARTS LIST

REAR WHEEL and HUB ASSEMBLY - w/ 29.5 X 25 TIRE OPTION MODEL I-160 XL

| <u>KEY NO.</u> | <u>PART NO.</u> | <u>DESCRIPTION</u> |
|----------------|-----------------|--------------------------------|
| 1. | AFB-00020 | Bolt 5/16" NC X 3/4" Lg. |
| 2. | A14004 | Hub Cap |
| 3. | A12036 | Wheel Ass'y. 25" x 25" |
| | A12036-1 | Center Dish Weldment, Flat |
| | A12036-2 | Six Gussets for Center Dish |
| 4. | A12041 | Side Ring |
| 5. | A12042 | Lock Ring |
| 6. | A12047 | O-Ring |
| 7. | A10048 | Spindle Nut |
| 8. | A10049A | Lock Collar |
| 9. | A10172 | Nut with Lock Pin |
| 10. | AFB-00059 | Bolt 1-1/4" NF X 7" Lg. |
| 11. | A12044 | Spindle |
| 12. | A14015 | Bearing Cone (Timken# 644) |
| 13. | A14014 | Bearing Cup (Timken# 632) |
| 14. | A12051 | Lug Nut |
| 15. | AFN-00009 | Lock Nut: 1-1/4" NF |
| 16. | A12035 | Hub |
| 17. | A12050 | Lug |
| 18. | A12037 | Grease Seal (National# 416039) |
| 19. | A12038 | Bearing Cone (Timken# 854) |
| 20. | A12039 | Bearing Cup (Timken#861) |
| 21. | A14016 | Valve Stem |

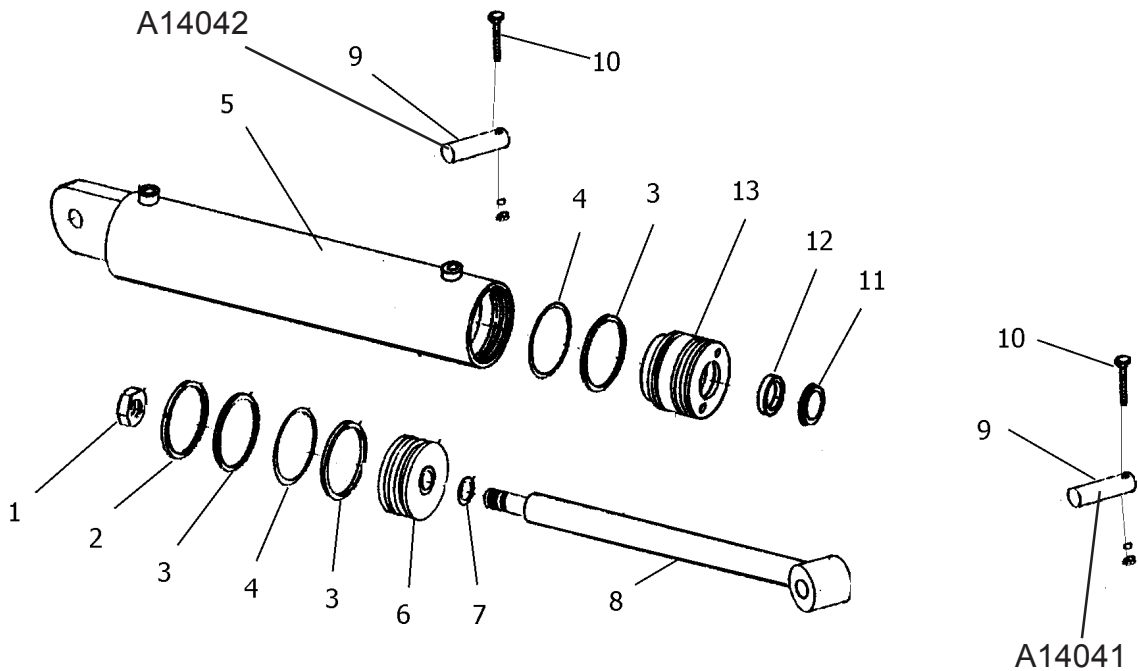
LEFT & RIGHT SIDE APRON CYLINDER 4 X 13



PART NO. A123365

| <u>KEY NO.</u> | <u>PART NO.</u> | <u>DESCRIPTION</u> |
|--|-----------------|---|
| 1. | A175H013 | Cylinder Barrel |
| 2. | A300H06 | O-Ring: 4" OD x 3/16" |
| 3. | A300H11 | Head Gland |
| 4. | A300H12 | Retainer Ring |
| 5. | A22H15 | O-Ring: 1-1/2" ID x 1/8" |
| 6. | A22H15A | Backup Washer: 1-1/2" |
| 7. | A300H13 | Gland Cap |
| 8. | A22H18 | Capscrew: 1/4" NC x 1" |
| 9. | A22H17 | Wiper Seal: 1-1/2" ID |
| 10. | A123351 | Pin, 1-1/2" with slot for keeper bushing |
| 11. | 8602 | Pin, Cotter 1/4" x 2" Zinc |
| 12. | A123362 | Bushing, retaining flange, 9/16" ID x 3/4" OD, 3/4" L |
| 13. | A123365-03 | Rod, S/N 20497 + Welded Eye with 1-1/2" Hole |
| <i>** If your unit has thread block type rod end see following page **</i> | | |
| 14. | A45H05 | Piston Gasket: 1" |
| 15. | A300H07 | Piston: 4" Dia. |
| 16. | A300H05 | Backup Washer: 4" OD |
| 17. | A300H04 | Cast Iron Ring: 4" OD |
| 18. | A300H03 | Piston Nut, 1" NF |
| 19. | A123363 | Pin: 1-1/2" square head |
| 20. | AFB-00015 | HHCS 1/2" NC x 1-1/2" Gr. 8 |
| | A300H14B | Packing Kit, Containing: |
| | (1) A300H04 | (2) A22H15 |
| | (2) A300H05 | (1) A22H15A |
| | (2) A300H06 | (1) A22H17 |
| | (1) A45H05 | |

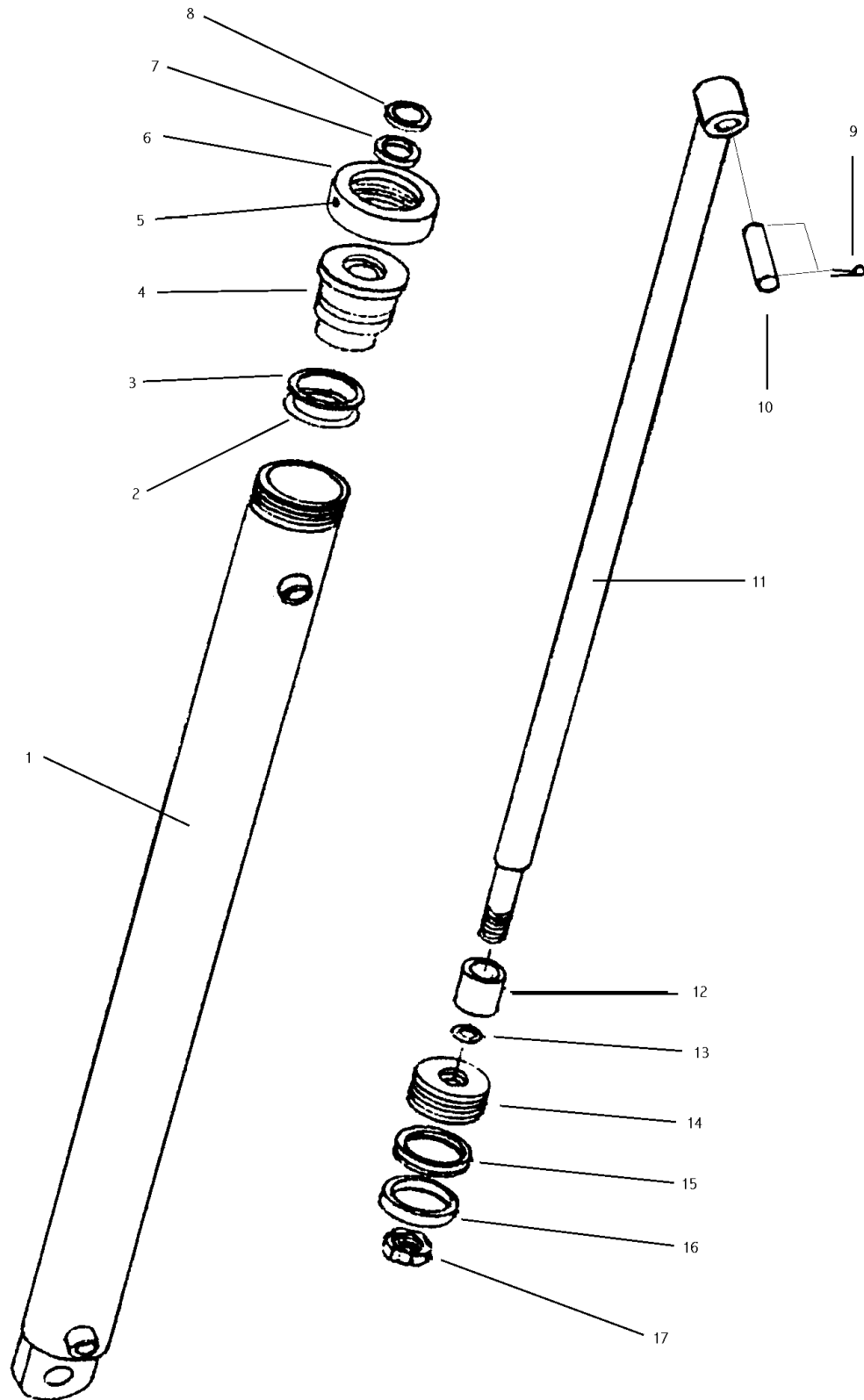
HYDRAULIC CYLINDER - A520H275 5" X 20" w/ #12 ORB Ports LIFT CYLINDER



PARTS LIST LIFT CYLINDER

| KEY NO. | PART NO. | DESCRIPTION |
|----------------|-----------------|--|
| 1. | A400H17 | Nut 1-1/4" NF, Lock Type |
| 2. | A400H04 | Cast Ring, 5" OD |
| 3. | A400H05 | Back-up Washer, 5" OD x 1/4" |
| 4. | A400H06 | "O" Ring, 5" OD x 1/4" |
| 5. | A80H35 | Barrel Assembly with 1-1/4" holes |
| 6. | A80H01 | Piston, 5" OD |
| 7. | A60H52 | "O" Ring, 1-1/4" OD x 1/16" |
| 8. | A80H32 | Shaft 2" Dia. |
| 9. | A14042 | Pin, 1-1/4" x 4-1/8 with Square Head & Grease Hole |
| 10. | A80H06 | Wiper Seal 2" ID |
| 11. | A80H04 | Seal 2" ID |
| 12. | A80H05A | Head Gland |
| | A80H07 | Packing Kit, Containing: |
| | (1) A400H04 | (1) A60H52 |
| | (3) A400H05 | (1) A80H04 |
| | (2) A400H06 | (1) A80H06 |

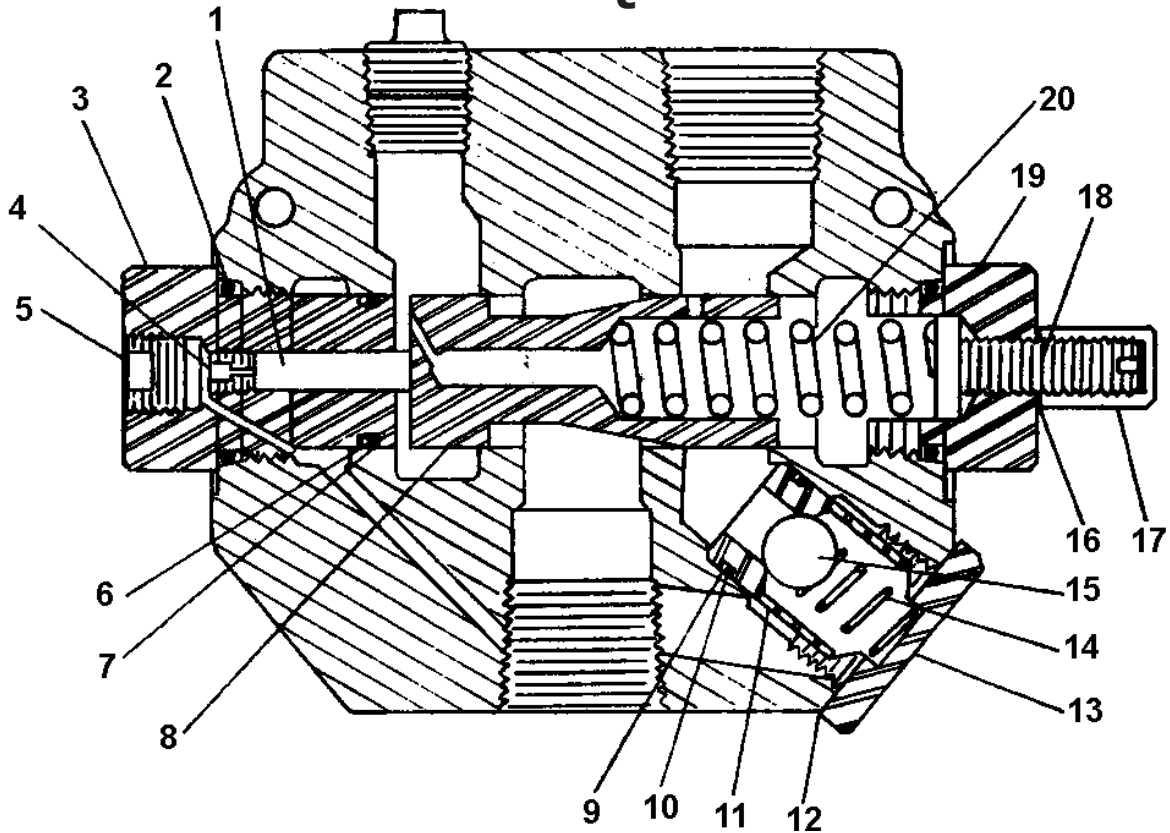
HYDRAULIC CYLINDER - A4560H114, 4-1/2" X 60" MODEL I-160 PUSH OFF CYLINDER



PARTS LIST
PUSH OFF CYLINDER, A4560H114, 4-1/2" x 60"
MODEL I-160

| <u>KEY NO.</u> | <u>PART NO.</u> | <u>DESCRIPTION</u> |
|----------------|-----------------|---------------------------------------|
| 1. | A175H08 | Barrel Assembly, 4-1/2" Bore |
| 2. | A175H03 | "O" Ring, 4-1/2" OD x 4-1/8" ID |
| 3. | A175H04 | Back Up Washer, 4-1/2" OD x 4-1/8" ID |
| 4. | A175H09 | Head Gland |
| 5. | ----- | Set Screw, 3/8" NC |
| 6. | A175H10 | Collar |
| 7. | A140H07 | Shaft Seal, 2-1/2" ID, OU-Cup |
| 8. | A140H08 | Wiper Seal |
| 9. | ----- | Cotter Pin, 3/16" x 2" |
| 10. | A10038 | Pin, 1-1/4" Dia. x 4-1/4" Lg. |
| 11. | A175H11 | Shaft, 2-1/2" Dia. |
| 12. | A175H06 | Spacer |
| 13. | A22H15 | "O" Ring, 1-1/2" x 1-3/4" OD |
| 14. | A175H12 | Piston |
| 15. | A175H05 | Piston Seal, 4-1/2" OD |
| 16. | A175H07 | Wear Ring, 4-1/2" OD |
| 17. | AFN-00018 | Nut, Lock Type, 1-1/2" NF |
| | A175H15 | Packing Kit, Containing: |
| | | (1) A175H03 (1) A175H04 |
| | | (1) A140H07 (1) A140H08 |
| | | (1) A22H15 (1) A175H05 |
| | | (1) A175H07 |

SEQUENCE VALVE



| <u>KEY NO.</u> | <u>PART NO.</u> | <u>DESCRIPTION</u> |
|----------------|-----------------|----------------------------|
| 1 | A101H49 | Piston |
| 2 | A101H50 | O-ring |
| 3 | A101H51 | External pilot plug |
| 4 | A101H52 | Orifice |
| 5 | A101H53 | Plug |
| 6 | A101H54 | O-ring |
| 7 | A101H55 | Backup washer |
| *8 | A101H70 | Metering spool |
| 9 | A101H57 | Backup washer |
| 10 | A101H58 | O-ring |
| 11 | A101H59 | Check seat |
| 12 | A101H60 | Aluminum washer |
| 13 | A101H61 | Check plug |
| 14 | A101H62 | Check spring |
| 15 | A101H63 | Check ball |
| 16 | A101H64 | Aluminum washer |
| 17 | A101H65 | Acorn nut |
| 18 | A101H66 | Adjusting screw |
| 19 | A101H69 | Adjusting plug - RD1075 SM |
| 20 | A101H68 | Metering spring |
| * | A101H71 | Valve body |

* NOT SOLD SEPARATELY

SEQUENCE VALVE

The sequence valve controls two hydraulic circuits with one hydraulic remote. Ashland Industries incorporates a sequence valve to control the Apron and Pushoff cylinder systems. When the tractors hydraulic remote is activated, oil flows first to the apron cylinders until they are fully extended. Once the cylinders are fully extended, the apron circuits' hydraulic pressure begins to increase. Once the pressure threshold is surpassed (which is adjustable. See adjustment section), the sequence valve diverts the oil flow to the pushoff's hydraulic circuit. Once the pushoff is completely extended the operator then reverses the tractors hydraulic remote. This will direct oil first to the Apron circuit. Once the aprons cylinders are fully retracted, again the hydraulic pressure begin to increase allowing the pushoff to retract fully once the oil has been diverted from the sequence valve.

INSTRUCTIONS for establishing sequence valve setting:

Remove acorn nut from end of sequence valve with a 1/2" wrench. Turn adjustment screw, using a 4mm hex wrench, clockwise until front apron rises before the push-off advances while the earthmover is empty. Turn the adjustment screw an additional 1/4 turn clockwise, then replace the acorn nut and tighten. Torque check valve assembly and internal pilot plug to 25 ft.-lbs. **maximum**.

Limited Warranty Statement

Ashland Industries Inc. warrants each new product to be free from defects in material and workmanship. This warranty is applicable only for the normal service life expectancy of the product or components, not to exceed **six consecutive months** from the date of delivery of the new Ashland Industries product to the original purchaser, or the date the product is first put into service via a rental agreement or other means, whichever occurs first.

Genuine Ashland Industries Inc. replacement parts and components will be warranted for 30 days from date of purchase, or the remainder of the original equipment warranty period, whichever is longer.

Under no circumstances will it cover any merchandise or components thereof, which in the opinion of the company, has been subjected to misuse, unauthorized modification, alterations, an accident or if repairs have been made with parts other than those obtained through Ashland Industries Inc.

Ashland Industries Inc. in no way warrants Tires since these items are warranted separately by their respective manufacturer. Please call Ashland Industries Inc. to receive phone numbers of tire suppliers.

Ashland Industries Inc. in no way warrants wearable items such as cutting edges, front dolly wheel balls, socket halves.

Our obligation under this warranty shall be limited to repairing or replacing, free of charge to the original purchaser, any part that, in our judgement, shall show evidence of such defect, provided further that such part shall be returned within 30 days from the date of failure to Ashland Industries Inc. routed through the dealer and distributor from whom the purchase was made, transportation charges prepaid. Upon warranty approval proper credits will be reimbursed for transportation.

This warranty shall not be interpreted to render Ashland Industries Inc. liable for injury or damages of any kind or nature to person or property. This warranty does not extend to the loss revenue, extra labor cost associated with downtime, substitute machinery, rental or for any other reason.

Except as set forth above, Ashland Industries Inc. shall have no obligation or liability of any kind on account of any of its equipment and shall not be liable for special or consequential damages. Ashland Industries Inc. make no other warranty, expressed or implied, and, specifically, Ashland Industries Inc. disclaims any implied warrant or merchantability or fitness for a particular purpose. Some states or provinces do not permit limitations or exclusions of implied warranties or incidental or consequential damages, so the limitations or exclusion in this warranty may not apply.

This warranty is subject to any existing conditions of supply which may direct affect our ability to obtain materials or manufacture replacement parts.

Ashland Industries Inc. reserves the right to make improvements in design or changes in specifications at any time, without incurring any obligation to owners of units previously sold

No one is authorized to alter, modify or enlarge this warranty nor the exclusion, limitations and reservations.

Ashland Industries Inc.
Warranty Department