



I-130 XL PARTS MANUAL

Introduced 4/01/01



Ashland Industries Inc.
Hwy. 13 South
P.O. Box 717
Ashland, WI. 54806
877-634-4622 Toll Free - phone
715-682-4622 phone
715-682-9717 fax
www.ashlandind.com



MODEL I-130 XL SCRAPER

HOW TO ORDER PARTS:

Be sure to state MODEL and SERIAL NO. of machine, PARTS NO., DESCRIPTION, and QUANTITY wanted.

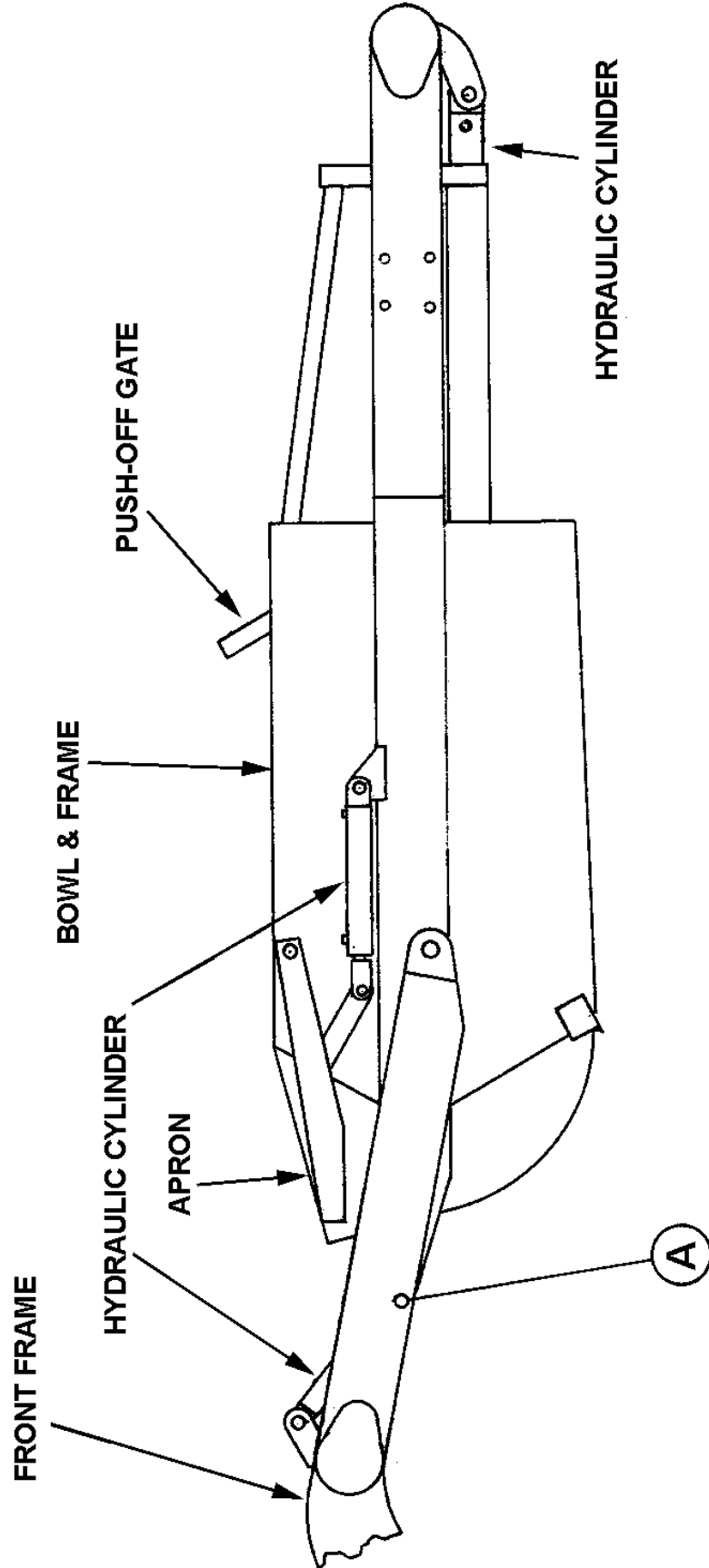
Unless this is done, we cannot provide prompt service or assure shipment of the correct parts.

INDEX

PAGE NO.

3. Illustration - Assembly
4. Operator and Maintenance Instructions
5. Gooseneck Frame Assembly
6. Apron Assembly
7. Bowl and Frame Assembly
8. Push Off Gate
9. Pole and Axle Assembly
10. Front Wheel and Hub Assembly
11. Rear Wheel, Spindle and Hub Assembly
12. Hydraulic Cylinder, 4" x 13", Apron
13. Hydraulic Cylinder, 5" x 16"
14. Hydraulic Cylinder, 4 ½ " x 54"
15. Hydraulic Valve
16. Hydraulic Valve Adjustment Instructions
17. Warranty Statement

ILLUSTRATION - ASSEMBLY



OPERATOR AND MAINTENANCE INSTRUCTIONS

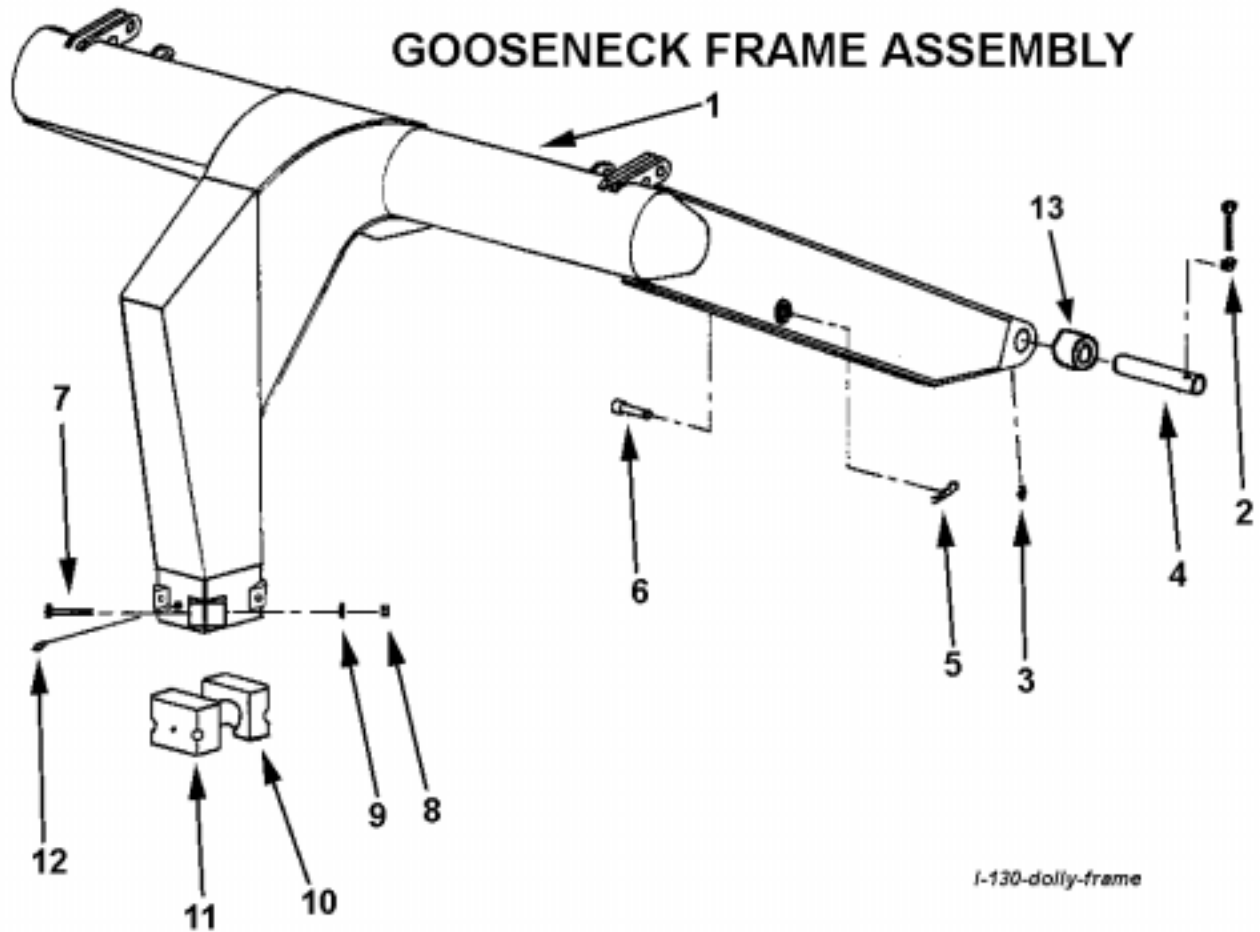
The scraper is a durable piece of equipment and with proper care will yield many years of trouble free operation. The scraper requires a power source with TWO 4-way (double acting) hydraulic control valves.

The scraper should be greased at all points where grease fittings are provided. Connect hydraulic hoses to the tractor and retract lift cylinders to remove transport lock pins (point A), then extend and retract all cylinders several times to force out any air from the hydraulic cylinders and lines. Check the oil level in the tractor hydraulic system and add to maintain the proper level. Care should be taken when adding oil or when disconnecting any oil line to keep all dirt out of the oil as dirt is a major factor in the failure of hydraulic components.

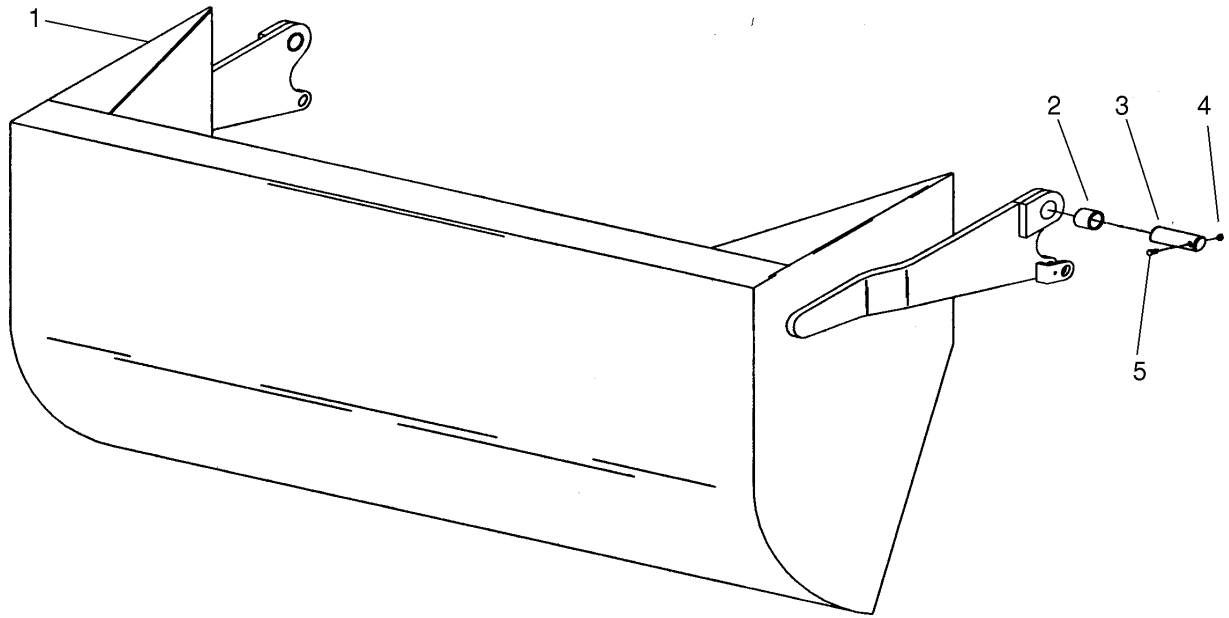
When the scraper is placed into operation, the operator will have to "feel out" the amount of depth of cut to obtain maximum loading efficiency. This is usually accomplished by taking a lesser and more uniform cut. However, some soil conditions such as loose sand may require a "pumping action" obtained by taking successive deep cuts and lifting out of cut as the tractor begins to lose power or traction.

1. After 10 hours work, all bolts should be checked and tightened if necessary.
2. Every 10 hours all grease fittings should be lubricated.
3. After 50 hours work, all bolts should be rechecked and tightened if necessary. Check wheel bearings and adjust if necessary.
4. After 300 hours work, clean and repack wheel bearings and replace, if necessary, cutting edges, worn pins, etc.

ASHLAND INDUSTRIES, INC.

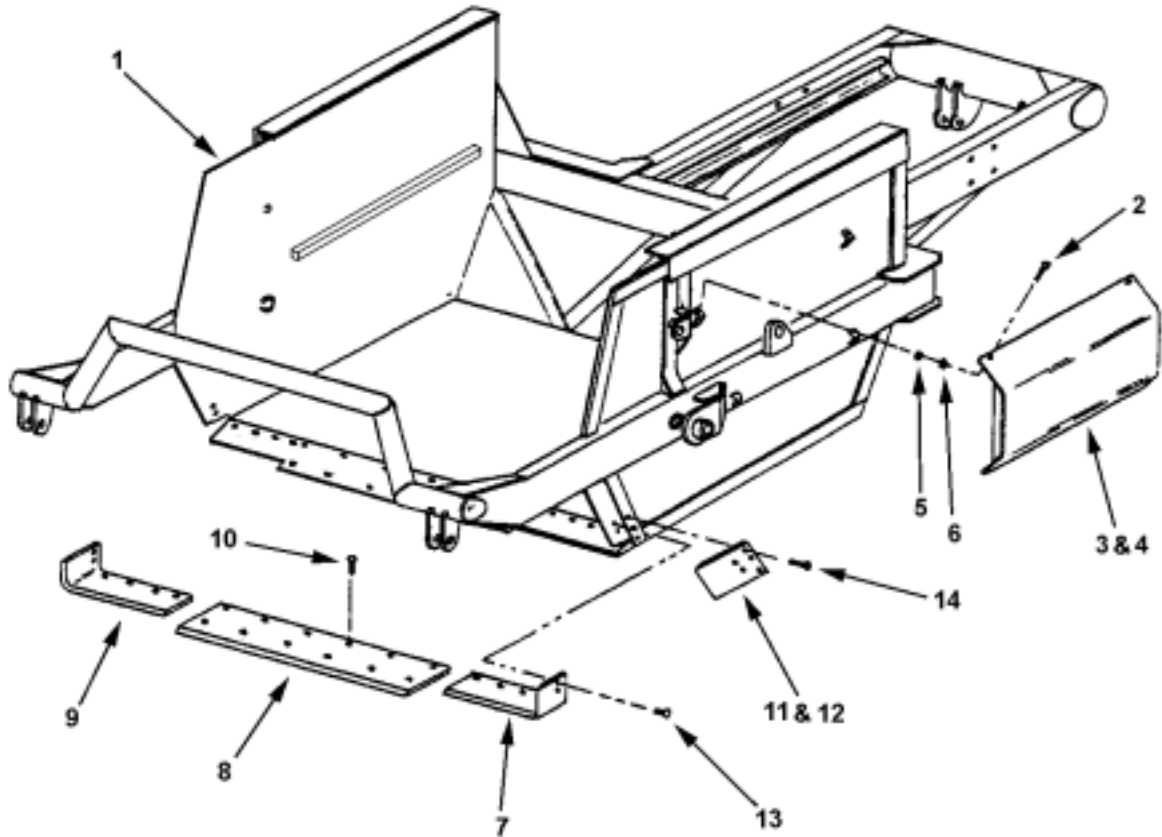


| KEY NO. | PART NO. | DESCRIPTION |
|---------|-----------|---|
| 1 | A13011 | Gooseneck frame |
| 2 | AFB-00054 | Bolt, 1/2" NC x 3-1/2" w/ 7500 nut |
| 3 | 14505 | Grease zerker, straight |
| 4 | A10152A | Pin, Frame attachment, 2" OD x 8-1/16" Long |
| 5 | | Hair pin |
| 6 | A10153 | Pin, Transport lock |
| 7 | AFB-00025 | Bolt, 7/8" NC x 5" |
| 8 | AFN-00019 | Nut, 7/8" NC |
| 9 | 8125 | Lockwasher, 7/8" |
| 10 | A14002 | Cast socket half, rear |
| 11 | A14003 | Cast socket half, front w/ zerker hole |
| 12 | A2206 | Grease zerker, long shank |
| 13 | A14039 | Bushing, 2.375 OD x 2.00 ID x 2" Long, Grease Passage |



| KEY NO. | PART NO. | DESCRIPTION |
|---------|----------|--------------------------------------|
| 1 | A123341 | Apron |
| 2 | A16027 | Bushing: 2" OD X 1-1/2" ID X 2" Long |
| 3 | | Pin |
| 4 | | Nut |
| 5 | | Bolt |

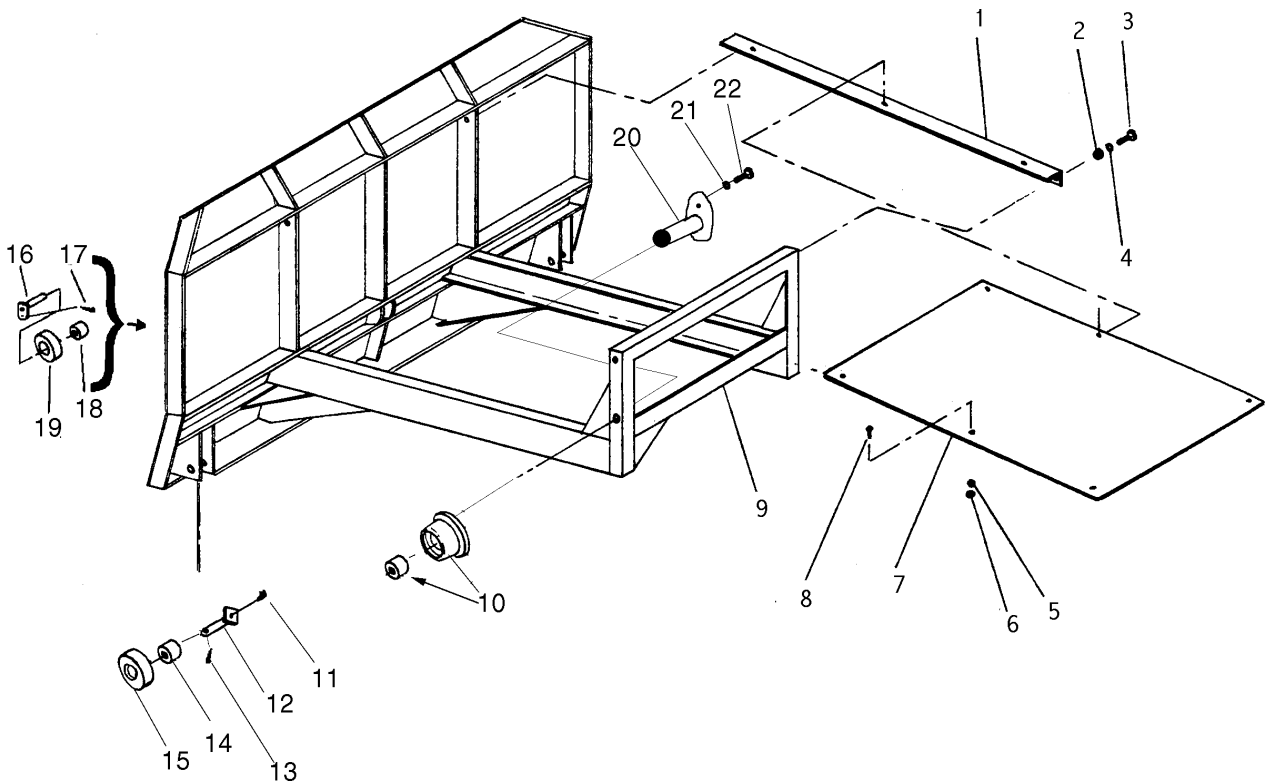
BOWL AND FRAME ASSEMBLY



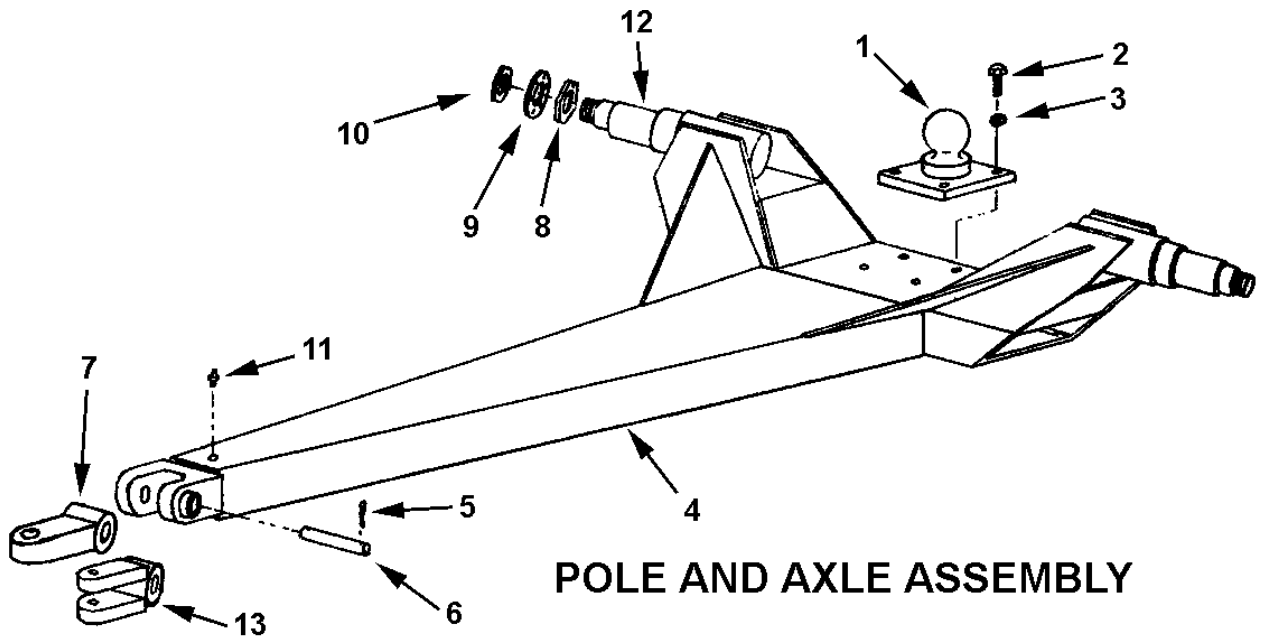
115-130 bowl

| KEY NO. | PART NO. | DESCRIPTION |
|---------|------------------|--|
| 1 | | Bowl and Frame I-130 XL |
| 2 | 6835 | Bolt, 3/8" NC x 1" |
| 3 | A10157 | Left hand cylinder guard |
| 4 | A10158 | Right hand cylinder guard |
| 5 | 8078 | 3/8" Lockwasher |
| 6 | 7450 | Nut, 3/8" NC |
| 7 | A123332L | Left cutting edge, 8" |
| 8 | A1233331 | Center cutting edge, 12" x 54" |
| 9 | A123332R | Right cutting edge, 8" |
| 10 | PB9P-NC-088-0275 | Plow bolt, 7/8" NC x 2-3/4" (12 req'd.) |
| | AFN-00019 | Nut: 7/8" NC (12 req'd./ center blade) |
| 11 | A123338L | (Optional) Left Bank Shaver Side Blade |
| 12 | A123338R | (Optional) Right Bank Shaver Side Blade |
| 13 | PB9P-NC-088-0275 | Plow bolt, 7/8" NC x 2-3/4" (6 req'd./ corner blade) |
| | AFN-00019 | Nut: 7/8" NC (6 req'd./ corner blade) |
| 14 | PB9P-NC-088-0275 | Plow bolt, 7/8" NC x 2-3/4" (4 req'd./ shaver blade) |
| | AFN-00019 | Nut: 7/8" NC (4 req'd./ shaver blade) |
| | PB9P-NC-088-0225 | Plow bolt, 7/8" NC x 2-1/4" (3 req'd./ shaver blade) |
| | AFN-00026 | Nut: 7/8" NC Jam (3 req'd./ shaver blade) |

I-130 PUSHOFF GATE



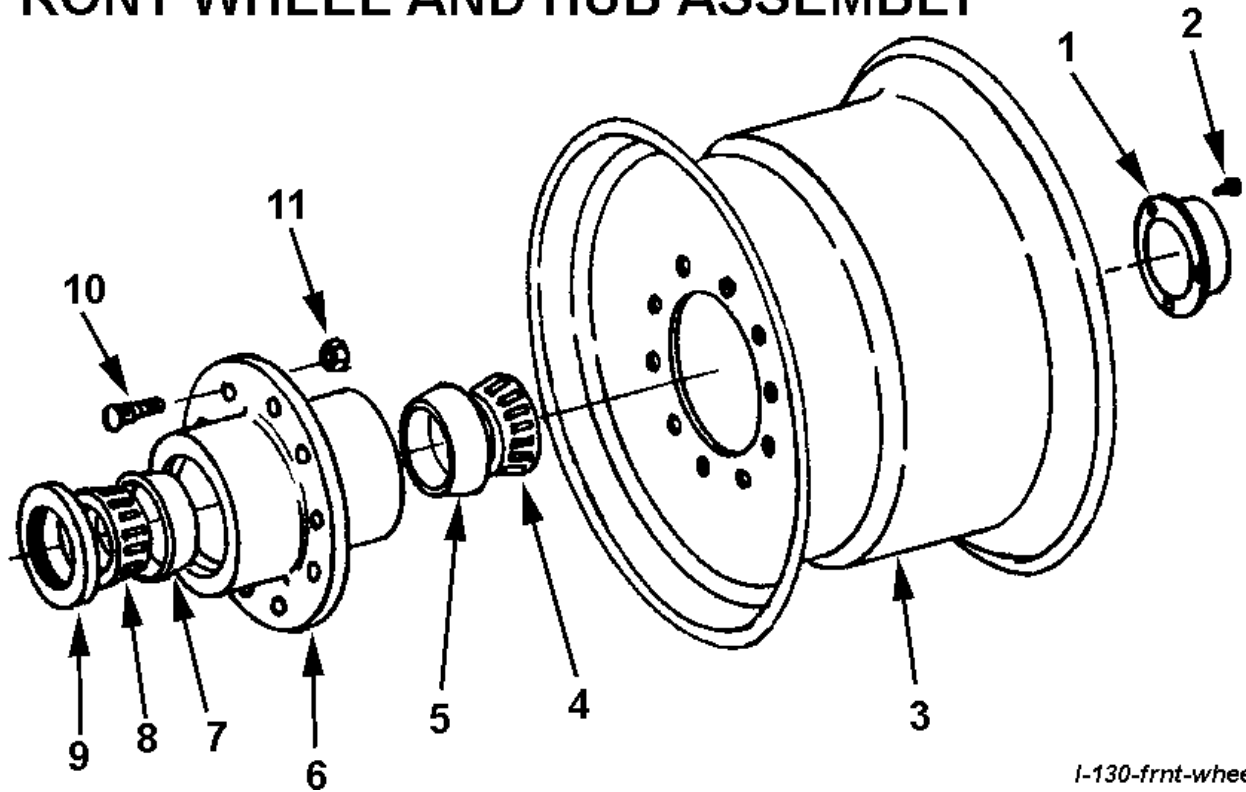
| KEY NO. | PART NO. | DESCRIPTION |
|---------|-----------|-------------------------------------|
| 1. | A13004 | Brace |
| 2. | AFN-00006 | Nut: 3/4" NC |
| 3. | AFB-00037 | Bolt: 3/4" NC x 2" Lg. |
| 4. | AFW-00002 | Lockwasher: 3/4" |
| 5. | 8078 | Lockwasher: 3/8" |
| 6. | 7450 | Nut: 3/8" NC |
| 7. | A10171 | Dirt Shield |
| 8. | AFB-00034 | Bolt: 3/8 NC x 1" Lg. |
| 9. | A16024 | Pushoff Gate: Model I-130 |
| 10. | A123306 | Roller: Rear Gate |
| | A123307 | Bushing" 1-5/8" OD x 1-1/4" ID |
| 11. | AHF-00028 | Grease Fitting: 1/8" NPT -90 degree |
| 12. | A6007A | Pin: 1-1/4" x 4-1/8" Lg. |
| 13. | AFP-00001 | Cotter Pin: 1/4 X 3-1/2" |
| 14. | A10163 | Bushing: 1-3/4" OD x 1-1/4" ID |
| 15. | A10164 | Roller: 4-1/4 OD X 1-3/4 ID |
| 16. | A123288 | Pin: 1-1/4 X 3-1/4" Tab Head |
| 17. | 7036 | Bolt: 1/2 NC X 2" |
| 18. | A10163 | Bushing: 1-3/4" OD x 1-1/4" ID |
| 19. | A10164 | Roller: 4-1/4 OD X 1-3/4 ID |
| 20. | A123305 | Pin: 1-1/4 X 2-3/4" |
| 21. | 8100 | Lockwasher: 1/2" |
| 22. | AFB-00033 | Bolt: 1/2 NC X 2-1/2" |



I-130-pole

| KEY NO. | PART NO. | DESCRIPTION |
|---------|-----------|-------------------------------------|
| 1 | A14017 | Ball Swivel |
| 2 | AFB-00018 | Bolt, 1" NC x 3" lg. |
| 3 | AFW-00006 | Lockwasher, 1" |
| 4 | A13006 | Pole |
| 5 | | Cotter pin, 5/16" x 3" |
| 6 | A14019 | Pin, 1-3/4" x 7-3/8" lg. |
| 7 | A14020A | Swivel hitch single lip |
| 8 | A10172 | Nut w/ lock pin |
| 9 | A10049A | Lock collar |
| 10 | A10048 | Spindle nut |
| 11 | 14505 | Grease fitting |
| 12 | A14021 | Spindle (weld on) |
| 13 | A14020 | Swivel hitch, double lip (optional) |

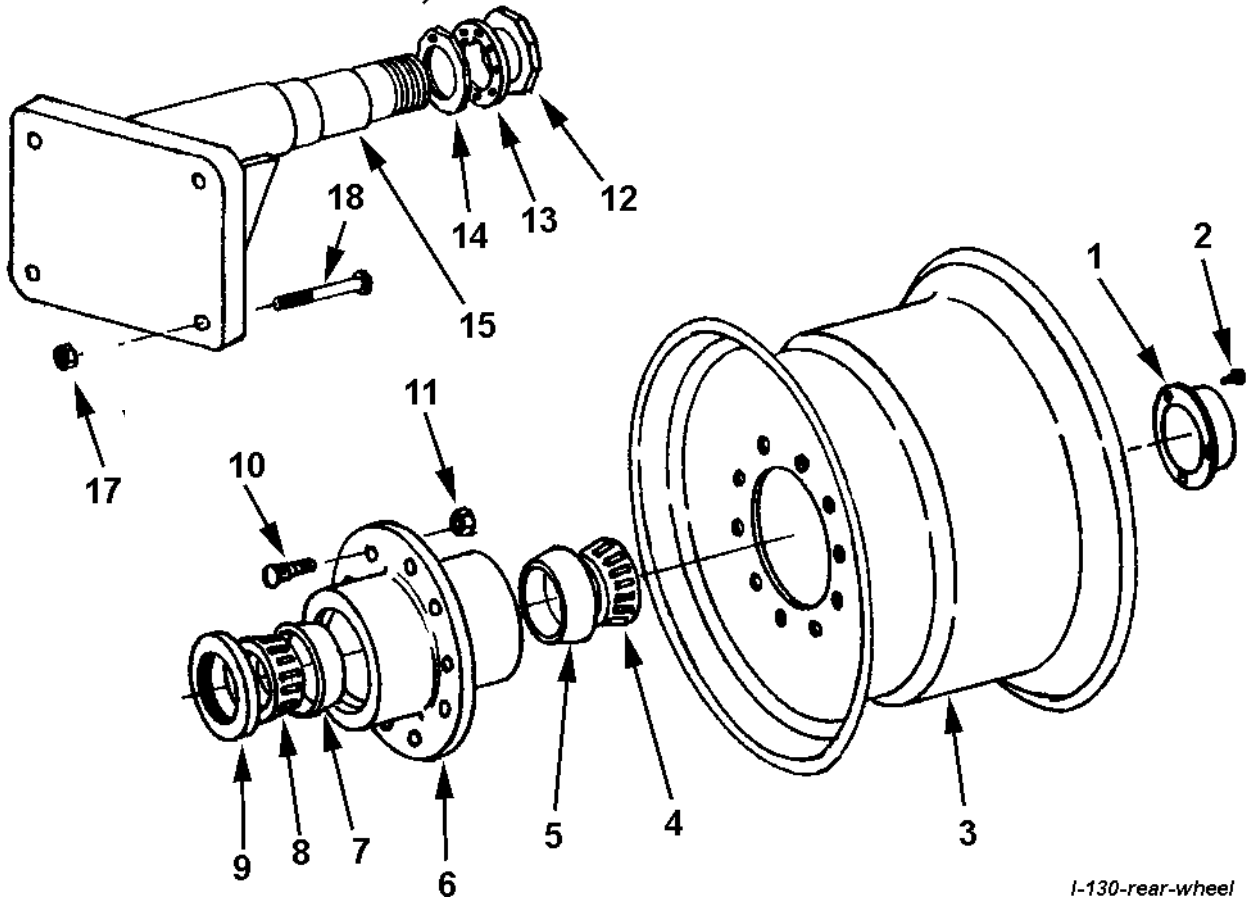
FRONT WHEEL AND HUB ASSEMBLY



I-130-frnt-wheel

| KEY NO. | PART NO. | DESCRIPTION |
|---------|-----------|-----------------------------|
| 1 | A14004 | Hub cap |
| 2 | AFB-00026 | Bolt, 5/16 NC x 5/8 lg. |
| 3 | A13007 | Wheel, 18 x 16.1 |
| 4 | A14015 | Bearing cone (Timken 644) |
| 5 | A14014 | Bearing cup (Timken 632) |
| 6 | A14010 | Hub |
| 7 | A14013 | Bearing cup (Timken 742) |
| 8 | A14012 | Bearing cone (Timken 749) |
| 9 | A14011 | Grease seal (CR 42624) |
| 10 | A10176 | Stud |
| 11 | A10046 | Lug nut |

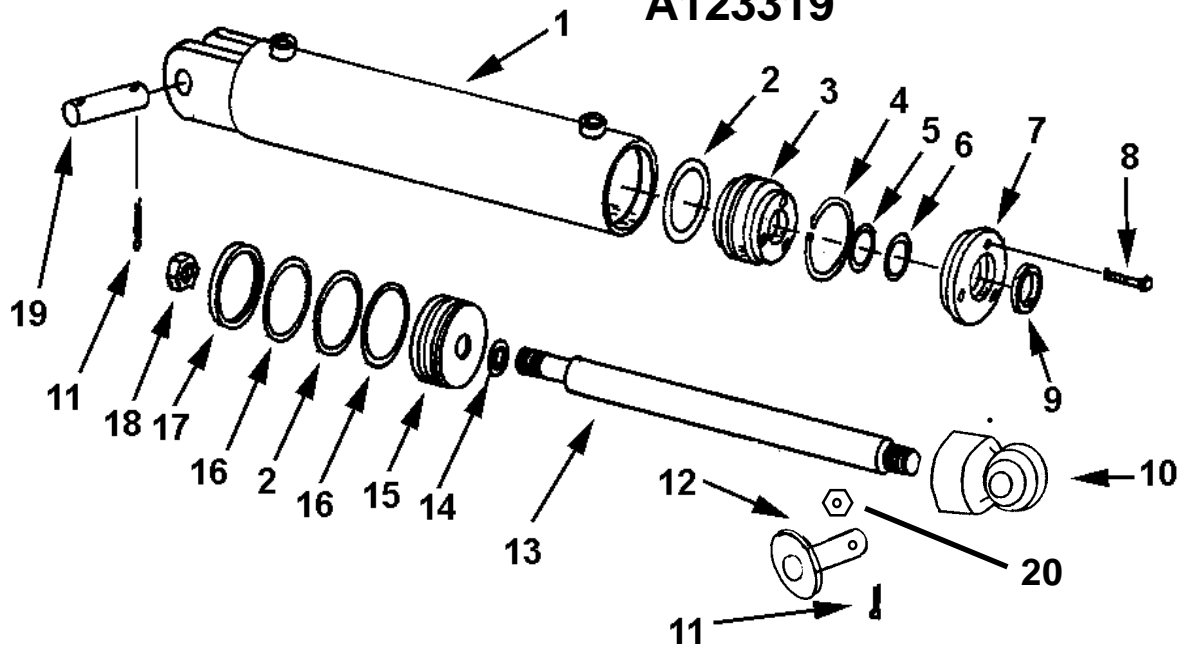
REAR WHEEL, SPINDLE & HUB ASSEMBLY



I-130-rear-wheel

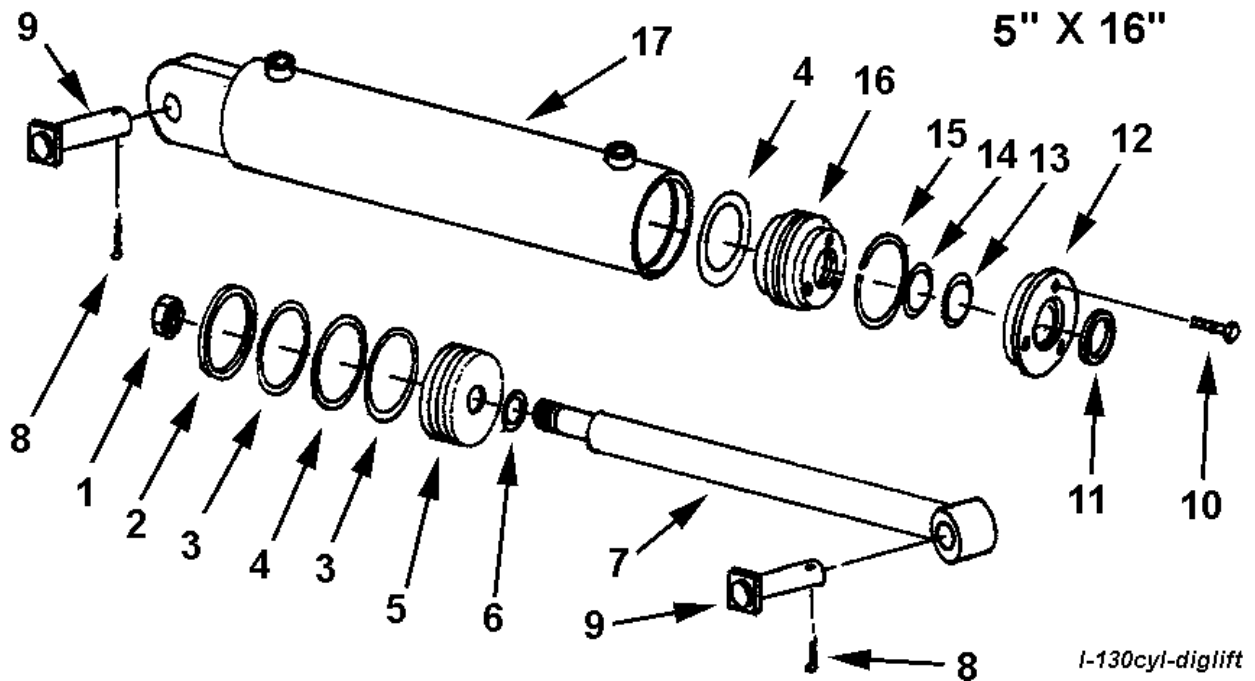
| KEY NO. | PART NO. | DESCRIPTION |
|---------|-----------|-----------------------------|
| 1 | A14004 | Hub cap |
| 2 | AFB-00026 | Bolt, 5/16 NC x 5/8 lg. |
| 3 | A10039 | Wheel, 16 x 26 Drop Center |
| 4 | A14015 | Bearing cone (Timken 644) |
| 5 | A14014 | Bearing cup (Timken 632) |
| 6 | A14010 | Hub |
| 7 | A14013 | Bearing cup (Timken 742) |
| 8 | A14012 | Bearing cone (Timken 749) |
| 9 | A14011 | Grease seal (CR 42624) |
| 10 | A10176 | Stud |
| 11 | A10046 | Lug nut |
| 12 | A10048 | Spindle nut |
| 13 | A10049A | Lock collar |
| 14 | A10172 | Nut w/ lock pin |
| 15 | A14037 | Spindle |
| 17 | AFN-00001 | Nut, 1" NF Top Lock |
| 18 | AFB-00017 | Bolt, 1" NF x 6-1/2" lg. |

HYDRAULIC CYLINDER 4" x 13" APRON CIRCUIT, A123319



| KEY NO. | PART NO. | DESCRIPTION |
|---------|-----------|--|
| 1 | A175H01 | Barrel Assembly |
| 2 | A300H06 | O-ring seal, 4" OD x 3/16" |
| 3 | A300H11 | Head gland |
| 4 | A300H12 | Retainer ring |
| 5 | A22H15 | O-ring, 1-1/2" x 1/8" |
| 6 | A22H15A | Backup washer |
| 7 | A300H13 | Head cap |
| 8 | A22H18 | Capscrew, 1/4 NC x 1" |
| 9 | A22H17 | Wiper seal, 1-1/2" ID |
| 10 | | Ball Swivel End |
| 11 | AFB-00015 | HHCS: 1/2 NC x 1-1/2" |
| 12 | A123336 | Pin: Tab Head w/Grease Fitting |
| 13 | A175H02 | Shaft, 1-1/2" diameter |
| 14 | A45H05 | Piston gasket, 1" |
| 15 | A300H07 | Piston, 4" dia. |
| 16 | A300H05 | Back up washer, 4" OD |
| 17 | A300H04 | Cast iron ring, 4" OD |
| 18 | A300H03 | Piston nut, 1" NF |
| 19 | A1217 | Pin, 1" x 3-1/2" |
| 20 | 7500 | Nut: 1/2" NC |
| | A300H14B | Packing kit containing: |
| | | 1 - A300H04 2 - A22H15 2 - A300H05 |
| | | 1 - A22H15A 2 - A22H06 1 - A22H17 |
| | | 1 - A45H05 |

HYDRAULIC CYLINDER DIG AND LIFT CIRCUIT

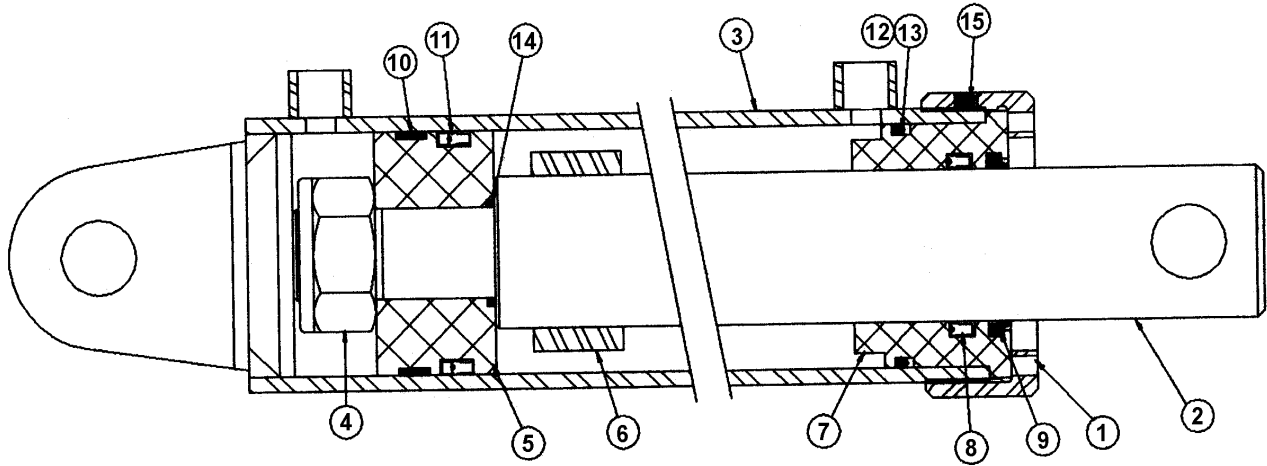


I-130cyl-diglift

CYLINDER PART NO. A516H114A

| KEY NO. | PART NO. | DESCRIPTION | |
|---------|-------------|----------------------------|-------------|
| 1 | A400H17 | Lock nut, 1-1/4" NF | |
| 2 | A400H04 | Cast iron ring, 5" OD | |
| 3 | A400H05 | Backup washer, 5" OD | |
| 4 | A400H06 | O-ring, 5" OD x 1/4" | |
| 5 | A400H07 | Piston, 5" OD | |
| 6 | A60H52 | O-ring, 1-1/4" ID x 1/8" | |
| 7 | A130H28 | Shaft, 2" dia. | |
| 8 | | Cotter pin, 3/16" x 1-1/2" | |
| 9 | A6007A | Pin, 1-1/4" x 4-1/4" | |
| 10 | A22H18A | Capscrew, 5/16" NC x 1" | |
| 11 | A400H14 | Wiper seal | |
| 12 | A400H13 | Head cap | |
| 13 | A400H12 | O-ring, 2" ID | |
| 14 | A400H12A | Backup washer, 2" ID | |
| 15 | A400H11 | Retainer ring | |
| 16 | A400H10 | Head gland, 5" OD | |
| 17 | A130H27 | Barrel Assembly, 5" ID | |
| | A400H15C | Packing kit containing: | |
| | 1 - A400H04 | 1 - A400H11 | 2 - A400H05 |
| | 1 - A400H14 | 2 - A400H06 | 1 - A400H12 |
| | 1 - A60H52 | 1 - A400H12A | |

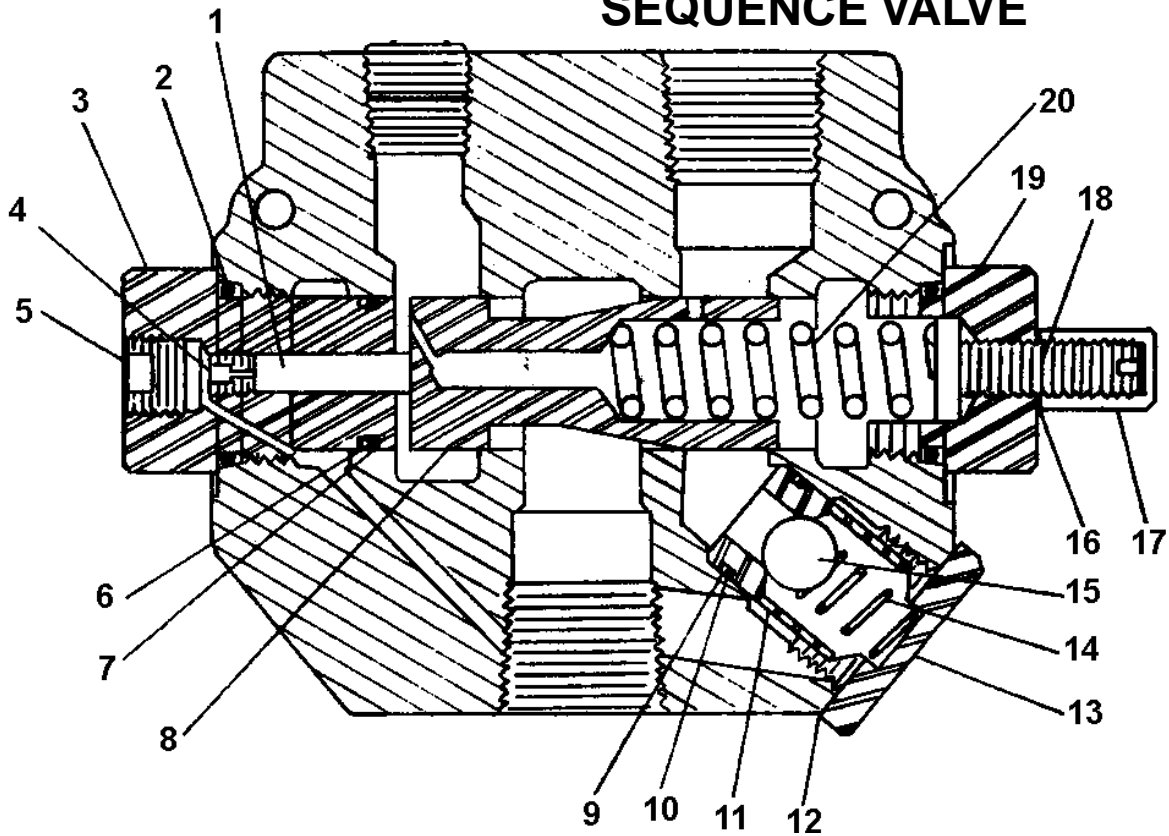
I-130 PUSH GATE CYLINDER ASSEMBLY PART NO. A455H114
 4 1/2" BORE X 54" STROKE - MODEL I-130 (SERIAL NO. 17870 & UP)



I-130-cyl-push

| KEY NO. | QTY. | PART NO. | DESCRIPTION |
|---------|------|----------|-------------------------------------|
| 1 | 1 | A175H10 | Collar |
| 2 | 1 | A130H30 | 2 1/2" Rod |
| 3 | 1 | A130H29 | Barrel weldment |
| 4 | 1 | A140H13 | Lock nut (2" - 12) |
| 5 | 1 | A175H12 | Piston |
| 6 | 1 | A17506 | Spacer |
| 7 | 1 | A175H09 | Head |
| 8 | 1 | A140H07 | Rod seal |
| 9 | 1 | A140H08 | Rod wiper |
| 10 | 1 | A175H07 | Wear ring |
| 11 | 1 | A175H05 | Piston seal |
| 12 | 1 | A175H03 | O-ring |
| 13 | 1 | A175H04 | Backup ring |
| 14 | 1 | A140H14 | O-ring |
| 15 | 1 | | Nylon tip set screw (3/8" NC x 3/8) |
| 16 | 1 | A175H15 | Seal kit (Items 8-14) |

SEQUENCE VALVE



| KEY NO. | PART NO. | DESCRIPTION |
|---------|----------|----------------------------|
| 1 | A101H49 | Piston |
| 2 | A101H50 | O-ring |
| 3 | A101H51 | External pilot plug |
| 4 | A101H52 | Orifice |
| 5 | A101H53 | Plug |
| 6 | A101H54 | O-ring |
| 7 | A101H55 | Backup washer |
| *8 | A101H70 | Metering spool |
| 9 | A101H57 | Backup washer |
| 10 | A101H58 | O-ring |
| 11 | A101H59 | Check seat |
| 12 | A101H60 | Aluminum washer |
| 13 | A101H61 | Check plug |
| 14 | A101H62 | Check spring |
| 15 | A101H63 | Check ball |
| 16 | A101H64 | Aluminum washer |
| 17 | A101H65 | Acorn nut |
| 18 | A101H66 | Adjusting screw |
| 19 | A101H69 | Adjusting plug - RD1075 SM |
| 20 | A101H68 | Metering spring |
| * | A101H71 | Valve body |

* NOT SOLD SEPARATELY

SEQUENCE VALVE

The sequence valve controls two hydraulic circuits with one hydraulic remote. Ashland Industries incorporates a sequence valve to control the Apron and Pushoff cylinder systems. When the tractors hydraulic remote is activated, oil flows first to the apron cylinders until they are fully extended. Once the cylinders are fully extended, the apron circuits' hydraulic pressure begins to increase. Once the pressure threshold is surpassed (which is adjustable. See adjustment section), the sequence valve diverts the oil flow to the pushoff's hydraulic circuit. Once the pushoff is completely extended the operator then reverses the tractors hydraulic remote. This will direct oil first to the Apron circuit. Once the aprons cylinders are fully retracted, again the hydraulic pressure begin to increase allowing the pushoff to retract fully once the oil has been diverted from the sequence valve.

INSTRUCTIONS for establishing sequence valve setting:

Remove acorn nut from end of sequence valve with a 1/2" wrench. Turn adjustment screw, using a 4mm hex wrench, clockwise until front apron rises before the push-off advances while the earthmover is empty. Turn the adjustment screw an additional 1/4 turn clockwise, then replace the acorn nut and tighten. Torque check valve assembly and internal pilot plug to 25 ft.-lbs. maximum.

Limited Warranty Statement

Ashland Industries Inc. warrants each new product to be free from defects in material and workmanship. This warranty is applicable only for the normal service life expectancy of the product or components, not to exceed six consecutive months from the date of delivery of the new Ashland Industries product to the original purchaser.

Genuine Ashland Industries Inc. replacement parts and components will be warranted for 30 days from date of purchase, or the remainder of the original equipment warranty period, whichever is longer.

Under no circumstances will it cover any merchandise or components thereof, which in the opinion of the company, has been subjected to misuse, unauthorized modification, alterations, an accident or if repairs have been made with parts other than those obtained through Ashland Industries Inc.

Ashland Industries Inc. in no way warrants Tires since these items are warranted separately by their respective manufacturer. Please call Ashland Industries Inc. to receive phone numbers of tire suppliers.

Ashland Industries Inc. in no way warrants wearable items such as cutting edges, front dolly wheel balls, socket halves.

Our obligation under this warranty shall be limited to repairing or replacing, free of charge to the original purchaser, any part that, in our judgement, shall show evidence of such defect, provided further that such part shall be returned within 30 days from the date of failure to Ashland Industries Inc. routed through the dealer and distributor from whom the purchase was made, transportation charges prepaid. Upon warranty approval proper credits will be reimbursed for transportation.

This warranty shall not be interpreted to render Ashland Industries Inc. liable for injury or damages of any kind or nature to person or property. This warranty does not extend to the loss revenue, extra labor cost associated with downtime, substitute machinery, rental or for any other reason.

Except as set forth above, Ashland Industries Inc. shall have no obligation or liability of any kind on account of any of its equipment and shall not be liable for special or consequential damages. Ashland Industries Inc. make no other warranty, expressed or implied, and, specifically, Ashland Industries Inc. disclaims any implied warrant or merchantability or fitness for a particular purpose. Some states or provinces do not permit limitations or exclusions of implied warranties or incidental or consequential damages, so the limitations or exclusion in this warranty may not apply.

This warranty is subject to any existing conditions of supply which may directly affect our ability to obtain materials or manufacture replacement parts.

Ashland Industries Inc. reserves the right to make improvements in design or changes in specifications at any time, without incurring any obligation to owners of units previously sold

No one is authorized to alter, Modify or enlarge this warranty nor the exclusion, limitations and reservations.

Ashland Industries Inc.
Warranty Department