



BUCHLI MASTER PARTS BOOK

L-9 Land Leveler

ver 12-02

Ashland Industries Inc.
1115 Rail Drive
P.O. Box 717
Ashland, WI. 54806
Ph: 877-634-4622 *Toll Free*
Ph: 715-682-4622
Fx: 715-682-9717
www.ashlandind.com



INDEX PAGE

L-9 Land Plane

How to order parts:

Be sure to state MODEL and SERIAL NO. of machine, PARTS NO., DESCRIPTION, and QUANTITY wanted.

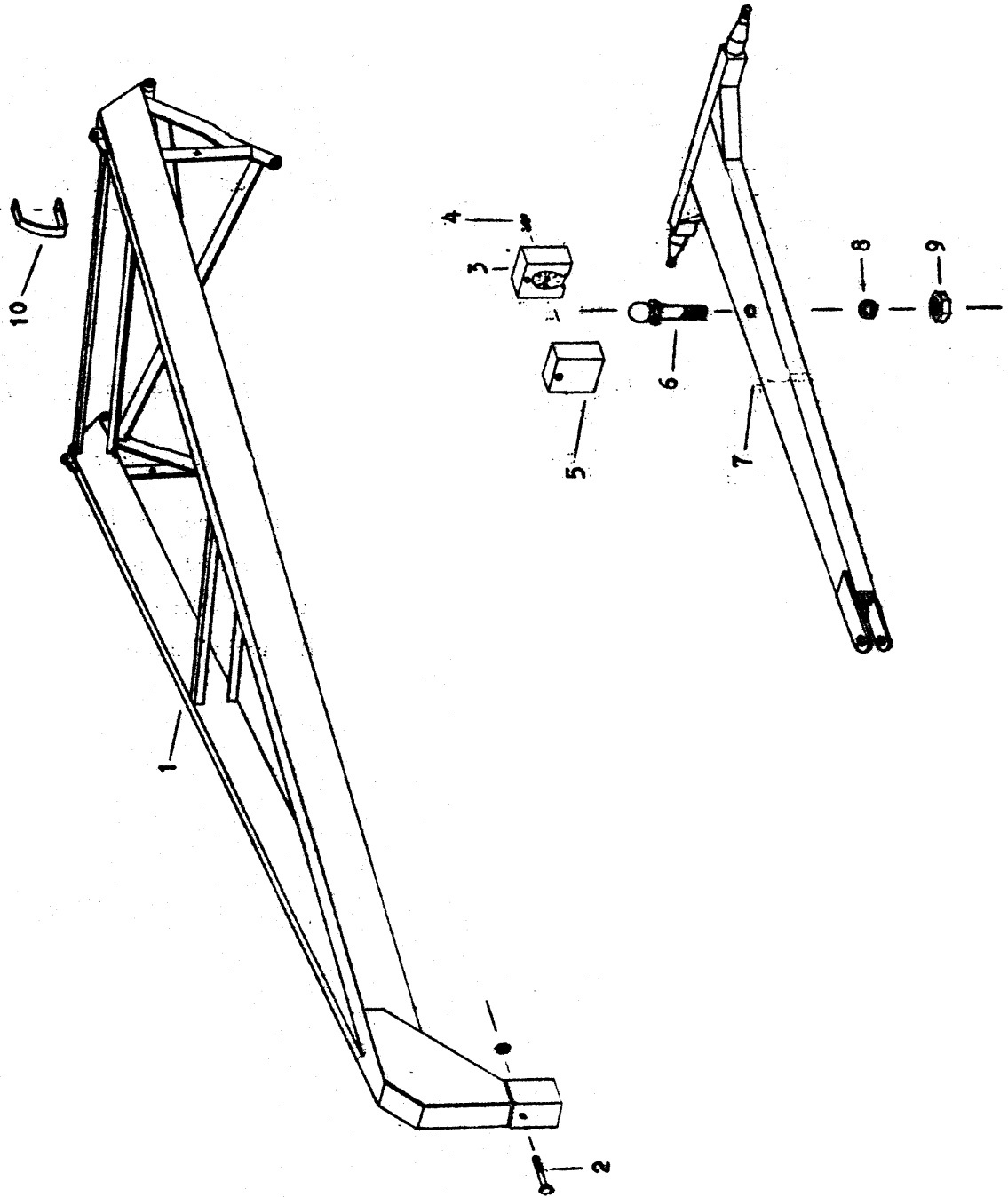
Unless this is done, we cannot give you prompt service or send the correct parts.

I N D E X

Page No.

3 & 4	Illustration & Parts List - Front Frame Section, and Front Dolly & Hitch Ass'y
5 & 6	Illustration & Parts List - Rear Frame Section and Moldboard Ass'y
7	Illustration & Parts List - Hydraulic Cylinder
8	Illustration & Parts List - Front and Rear Wheel, Hub, and Bearing Ass'y

FRONT FRAME SECTION & DOLLY ASSEMBLY



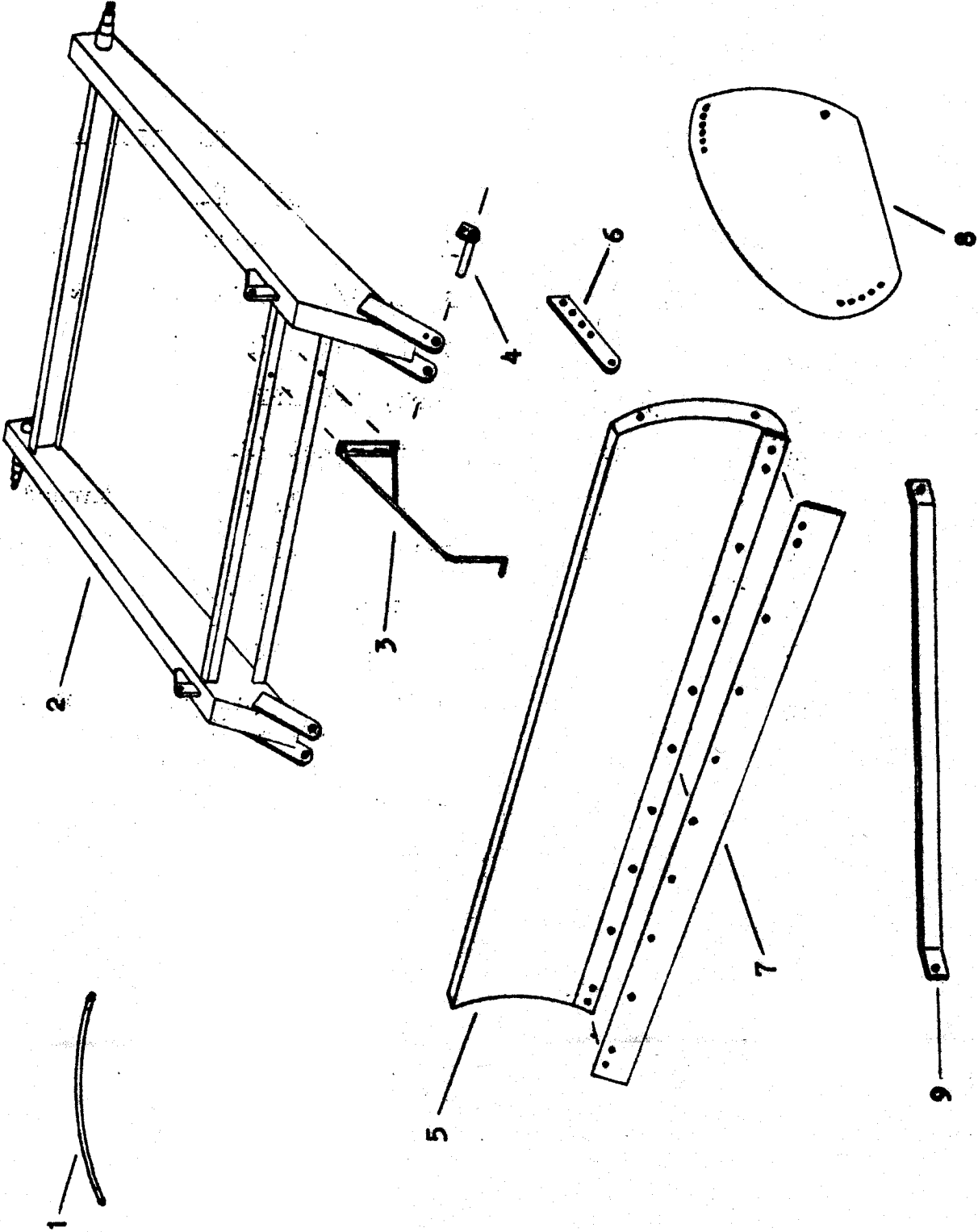
PARTS LIST

FRONT FRAME SECTION, FRONT DOLLY AND HITCH ASSEMBLY

L-9

Key No.	Part No.	Description
1	L-91	Front frame section
2		Bolt, 5/8 x 5-1/2 w/nut & LW
3	215	Cast socket (rear half)
4	3002	Zerk, 1/8 NPT long shank
5	215A	Cast socket (front half)
6	216A	Ball swivel, 1-1/4 NF thread
7	L-92A	Pole and axle
8		Lockwasher, 1-1/4
9		Nut, 1-1/4 NF
10	L-93	Depth gauge quadrant (uses 2 - 3/8 x 1 machine bolts NC)

REAR FRAME SECTION, CUTTING EDGE, BRACES & MOLDBOARD ASS'Y



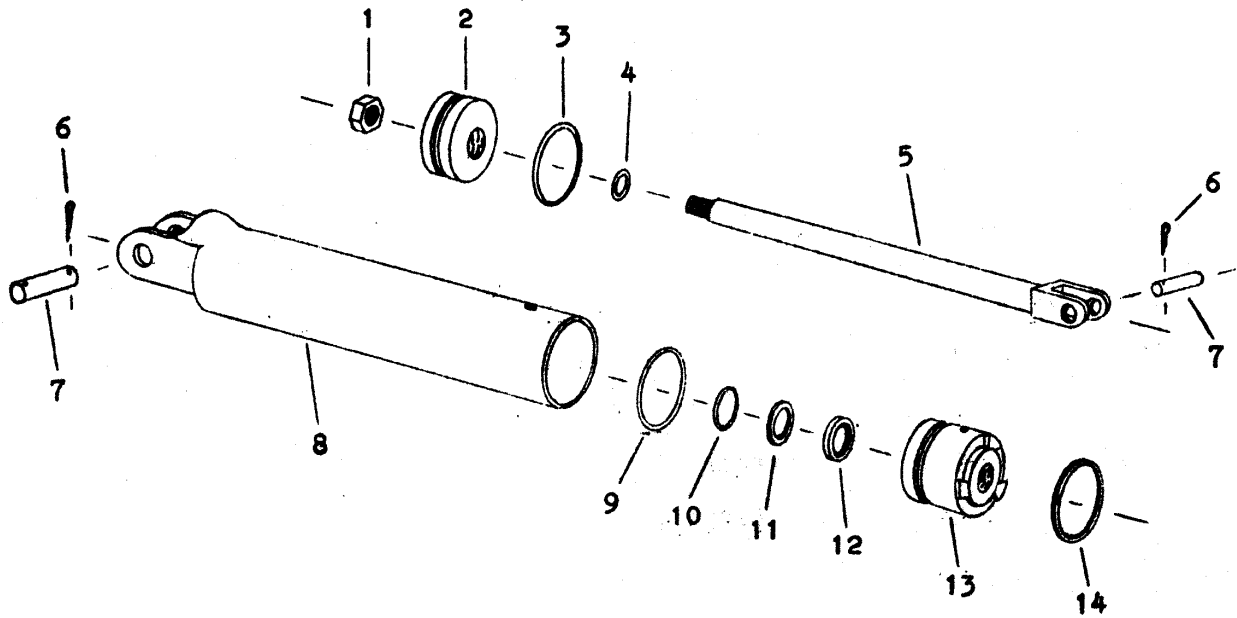
PARTS LIST

REAR FRAME SECTION, CUTTING EDGE, BRACES & MOLDBOARD ASS'Y

L-9

Key No.	Part No.	Description
1	L-94	Hydraulic hose, 1/2 x 24 (4 used)
2	L-97	Rear frame section
3	L-99	Depth gauge pointer
4	L-912	Pin, 1-1/2 x 6 with grease hole (uses 1/2 x 1 NC capscrew w/lockwasher)
5	L-95	Moldboard ass'y (uses 3/4 x 2-1/2 bolts to connect to frame)
6	L-98	Tilt bracket (right and left same)
7	L-96	Cutting edge, 9' (uses 11 1/2 x 1-1/2 plow bolts)
8	L-911	Moldboard end plate (right and left same), (uses 3/4 x 1-1/2 bolt at top)
9	L-910	End plate brace (uses 5/8 x 2 bolt at frame and 5/8 x 1-1/2 at end plate)

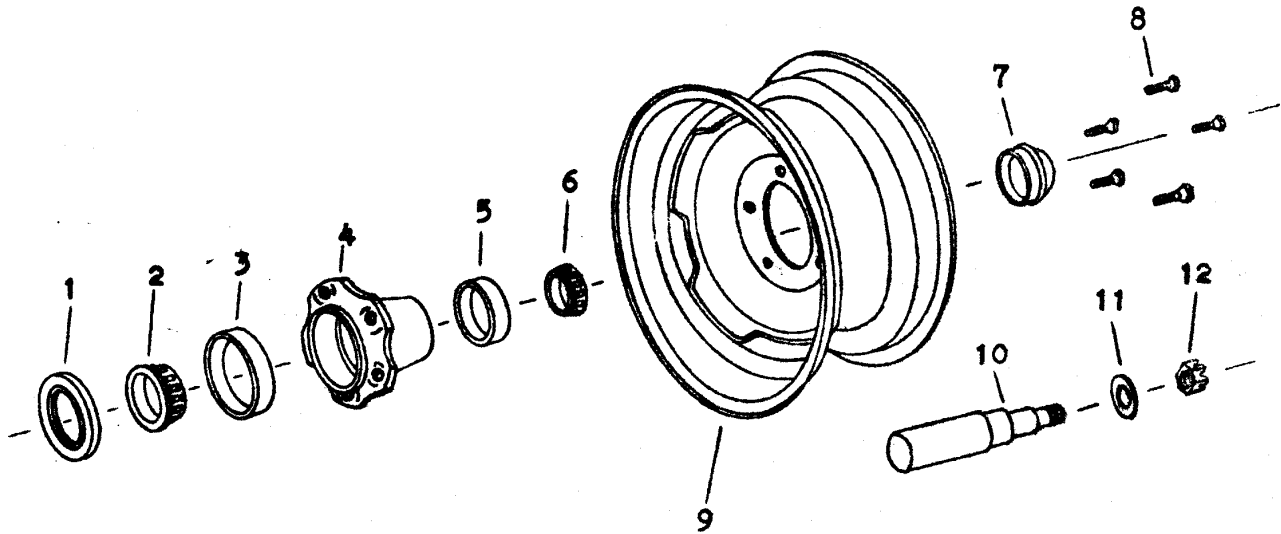
ILLUSTRATION - HYD CYLINDER
 MODEL PMC-3901
 2-1/2" x 8"



PARTS LIST

Key No.	Part No.	Description
1	3/4 JN	3/4 Jam nut
2	P4-1250	Piston
3	PMAP-0-33	O-ring, 2-1/2 OD
4	PMAP-0-11	O-ring, 3/4 OD
5	P13-401	Piston rod & clevis assembly
6	B22H10	Cotter pin, 3/16 x 1-1/2
7	PMSP-8	Clevis pin
8	BT1-3901	Tube & clevis ass'y - PMC-3901
9	PMAP-OG-6	O-ring gasket, 2-1/2 OD
10	PMAP-0-19	O-ring, 1 ID
11	PMAP-W-19	Leather washer, 1 ID
12	PMAP-SCM-19	Wiper/seal, 1 ID
13	G1-1250	Gland
14	2-1/2 SSR	Spirolox snap ring, 2-1/2

ILLUSTRATION - WHEEL HUB & SPINDLE ASSEMBLY



PARTS LIST

Key No.	Part No.	Description
1	AFS-2130	Grease seal
2	14136A	Bearing cone, inner
3	14276	Bearing cup, inner
4	Q502	Hub, less bearings
5	09195	Bearing cup, outer
6	09067	Bearing cone, outer
7	FS-8432	Hub cap
8	MSK-523-1	Wheel bolt
9	C-13751	Wheel, 14" x 5"
10	FS-12594	Spindle
11		Washer, 3/4 flat
12		Nut, 3/4 NF castellated