



BUCHLI MASTER PARTS BOOK

B-300 Scraper

ver 12-02

Ashland Industries Inc.
1115 Rail Drive
P.O. Box 717
Ashland, WI. 54806
Ph: 877-634-4622 *Toll Free*
Ph: 715-682-4622
Fx: 715-682-9717
www.ashlandind.com



INDEX PAGE

B-300 Scraper

How to order parts:

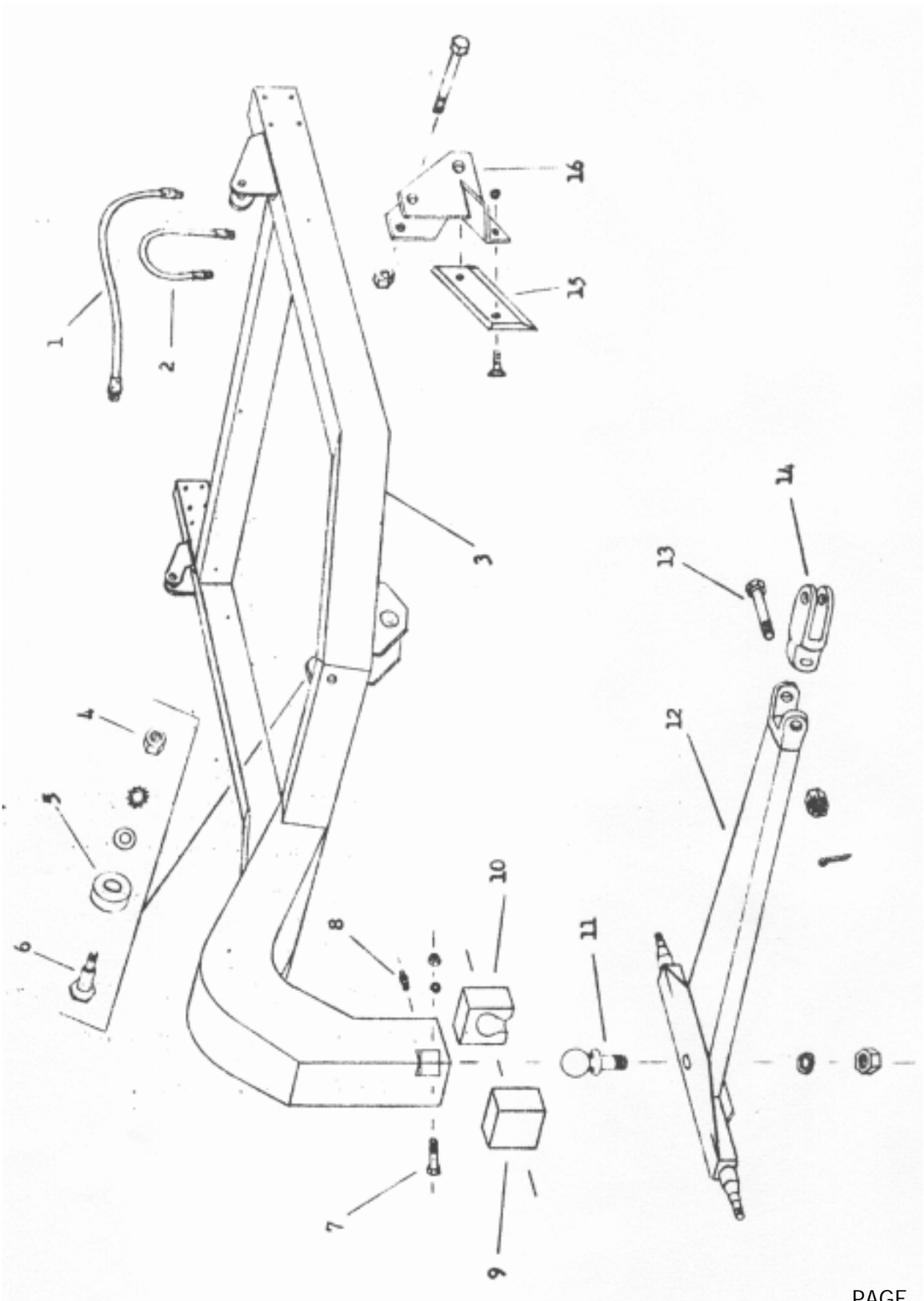
Be sure to state MODEL and SERIAL NO. of machine, PARTS NO., DESCRIPTION, and QUANTITY wanted.

Unless this is done, we cannot give you prompt service or send the correct parts.

I N D E X

<i>Page No.</i>	<i>Illustration & Parts List</i>
3 - 4	Frame, Hose, and Pole Ass'y
5 - 6	Actuating and Sub Frame Ass'y
7 - 8	Bucket, Apron and Cutting Edges
9	Hyd. Cylinder, 4" x 16" early, Model FEQS-12
10	Wheel, Hub, Bearing & Spindle Ass'y
11	Hyd. Cylinder, 3" x 16" (high pressure) early, Model FEQS-13B (opt)
12	Hyd. Cylinder, 4" x 16" current, Model 416 DAW
13	Hyd. Cylinder, 3" x 16" (high pressure) current, Model B316H1 (opt)

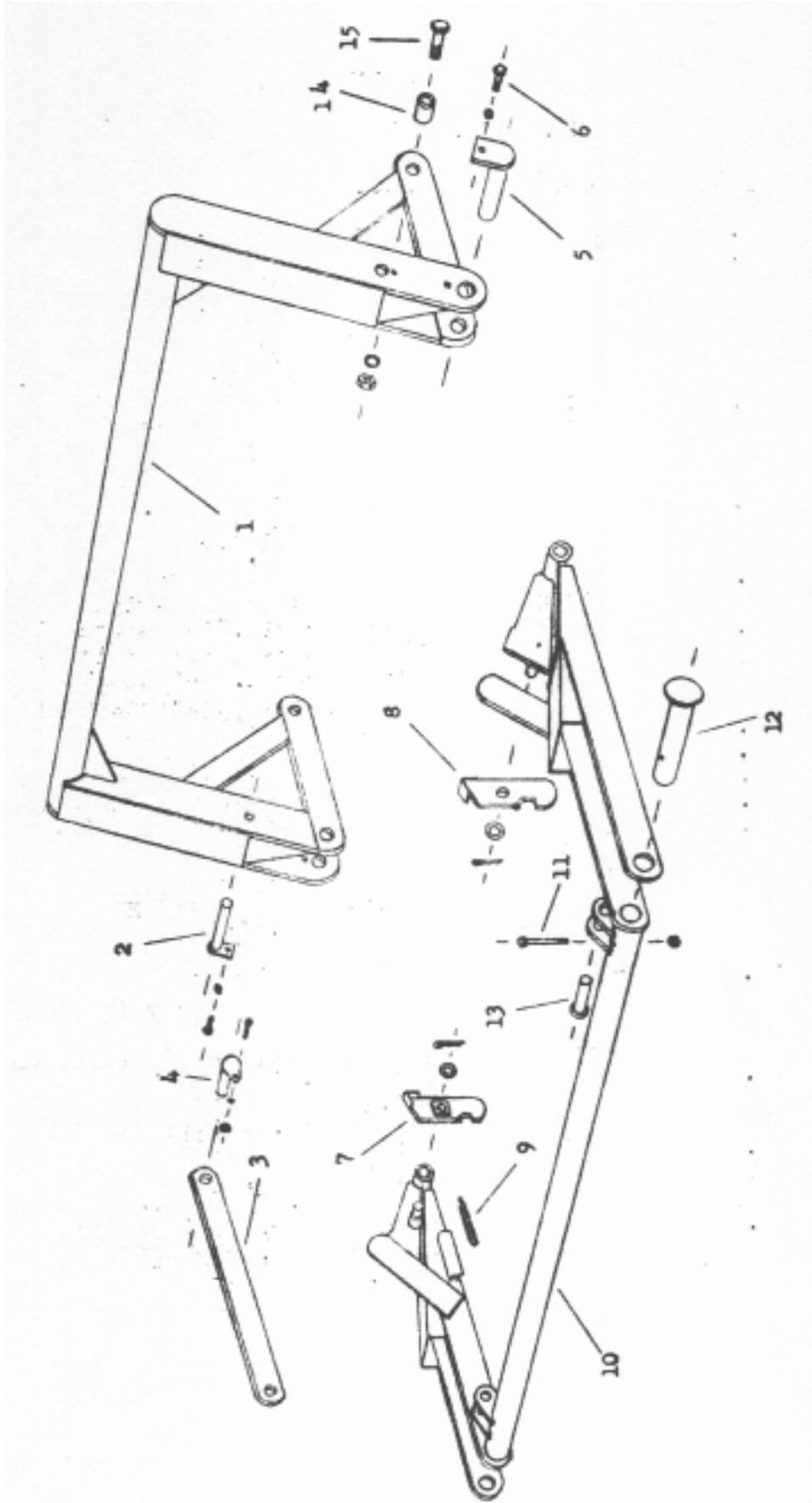
FRAME, HOSE, AND POLE ASSEMBLY



PARTS LIST
 FRAME, HOSE AND POLE ASSEMBLY
 B-300 SCRAPER

Key No.	Part No.	Description
1	116	Hydraulic hose, 3/8" x 33"
2	115	Hydraulic hose, 3/8" x 24"
		Swivel adapter, 3/8" straight
		Swivel adapter, 3/8" 90 degree
	B300 HO1	Hydraulic hose, 1/2" x 84" (scraper to tractor)
	B300 HO2	Male hydraulic coupler end, 1/2" Pioneer
3	3001	Frame (used up to sn 2205)
	3001A	Frame (used on sn 2250 to sn 2527)
	B30001B	Frame (used on sn 2536 and up)
4		Nut, 1" NF
		Lockwasher, 1"
		Flat washer, 1"
5	209	Roller (used up to sn 2527)
	B30002	Roller (used on sn 2536 and up)
6	209A	Shoulder pin, 1-1/8" shoulder, 1-1/4" to 1" NF (used up to sn 2527)
	B30003	Shoulder pin, 2-1/2" shoulder, 1-1/4" to 1" NF (used on sn 2536 and up)
7		Bolt, 5/8" x 4" w/nut and LW
8	3002	Zerk, 1/8" NPT (long shank)
9	300F	Cast ball socket (front half)
10	300R	Cast ball socket (rear half w/zerk hole)
11	216	Ball swivel 1-1/4" NF (4-1/2" shank, used up to sn 2205)
	216A	Ball swivel 1-1/4" NF (2" shank, used on sn 2250 and up)
		Lockwasher, 1-1/4"
		Nut, 1-1/4" NF
12	3003	Pole and axle ass'y (used up to sn 2205)
	3003A	Pole and axle ass'y (used on sn 2250 and up)
13		Capscrew, 1" x 6" NF
		Nut, 1" NF castellated
		Cotter pin, 3/16" x 1-1/2"
14	3004A	Swivel hitch
15	B30007	Cutting edge, side cutter
		Plow bolt, 1/2" x 1-1/2" w/nut
16	B30008	Side cutter, left (optional)
	B30026	Side cutter, right (optional)
		Bolt, 3/4" x 5-1/2" w/nut

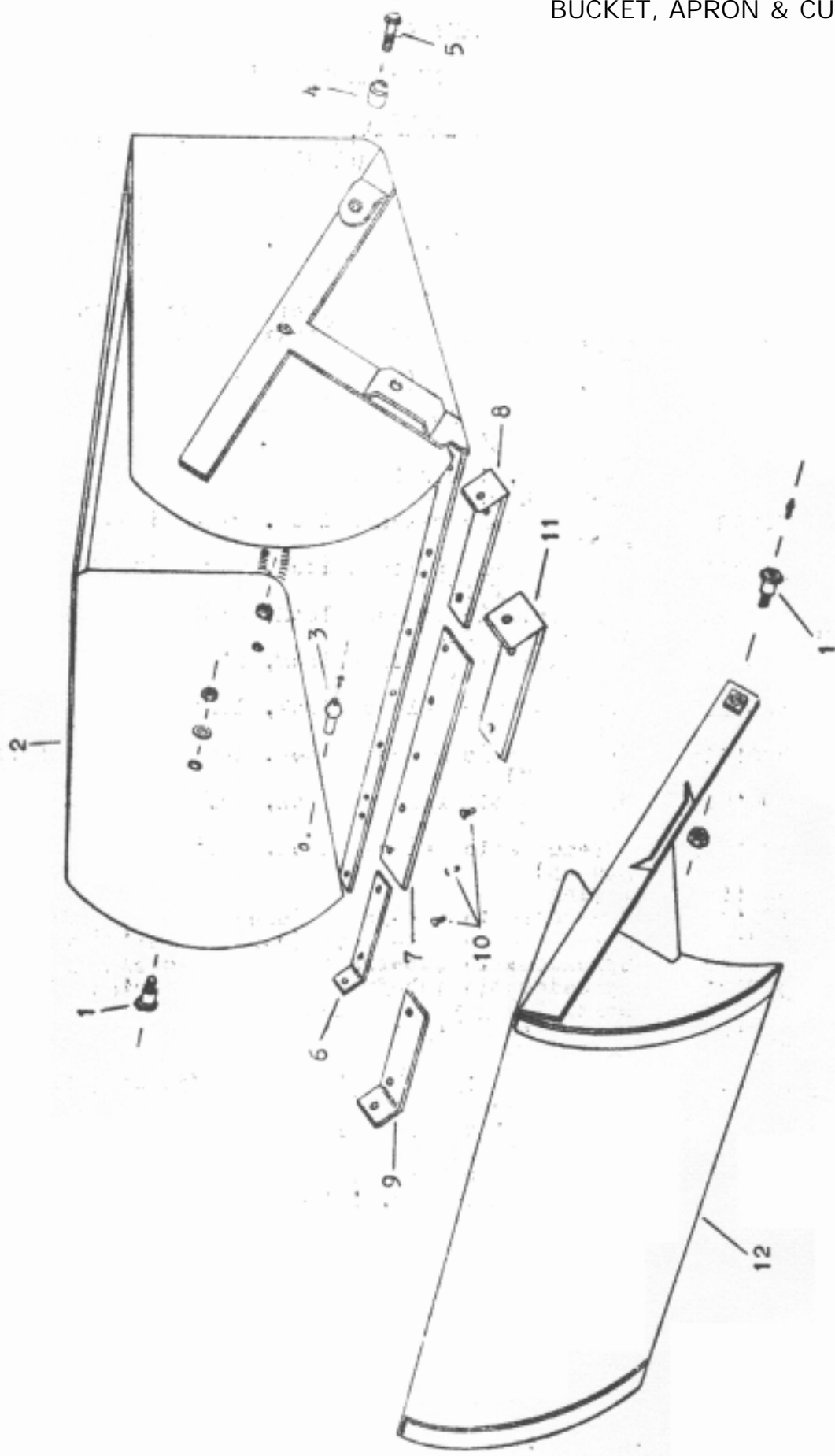
SUB FRAME & ACTUATING ASSEMBLY



PARTS LIST
SUB FRAME & ACTUATING ASSEMBLY
B-300 SCRAPER

Key No.	Part No.	Description
1	3005	Actuating frame ass'y, (used up to sn 2028)
	3005A	Actuating frame ass'y, (used on sn 2076 to sn 2232)
	3005B	Actuating frame ass'y, (used on sn 2250 to sn 2636)
	3005C	Actuating frame ass'y, (used on sn 2737 and up)
2	3006	Front cyl pin, 1 x 6-1/4, uses 1/4 x 2-1/2 CP (used up to sn 2028)
	3006A	Front cyl pin, 1 x 6 (used on sn 2076 and up)
3	3007	Front actuating arm, left and right same
4	B4505	Pin, 1-1/4 x 2-3/8 w/locking head (used on sn 2737 and up)
	405	Pin, 1-1/4 x 3 (used up to sn 2636)
		Narrow rim washer, 1-1/4 ID Cotter pin, 1/4 x 2
5	3008	Pin, 1-1/2 x 6
6		Capscrew, 1/2 x 1 NC
		Lockwasher, 1/2
7	3009R	Spreadomatic release lock, right (used up to sn 2028)
	3009RA	Spreadomatic release lock, right (used on sn 2076 to sn 2177)
	3009RB	Spreadomatic release lock, right (used on sn 2179 to sn 2232)
	3009RC	Spreadomatic release lock, right (used on sn 2250 and up)
8	30010L	Spreadomatic release lock, left (used up to sn 2028)
	30010LA	Spreadomatic release lock, left (used on sn 2076 to sn 2177)
	30010LB	Spreadomatic release lock, left (used on sn 2179 to sn 2232)
	30010LC	Spreadomatic release lock, left (used on sn 2250 and up)
9	30011	Spring
10	30012	Spreadomatic sub-frame (used up to sn 2028)
	30012A	Spreadomatic sub-frame (used on sn 2076 to sn 2177)
	30012B	Spreadomatic sub-frame (used on sn 2179 to sn 2232)
	30012C	Spreadomatic sub-frame (used on sn 2250 and up)
11		Bolt, 3/8 x 3-1/2 w/nut and LW
12	30013	Pin, 2-1/4 x 10-1/2
13	217	Pin, 1-1/4 x 2-7/8
14	B4504	Bushing, 1-1/2 OD x 1 ID x 1-3/32 long (used on sn 2637 and up)
15		Bolt, HT 1 x 3-1/2 NF w/nut & LW (used on sn 2637 and up)
	405	Pin, 1-1/4 x 3 (used up to sn 2636)
		Narrow rim washer, 1-1/4 ID Cotter pin, 1/4 x 2

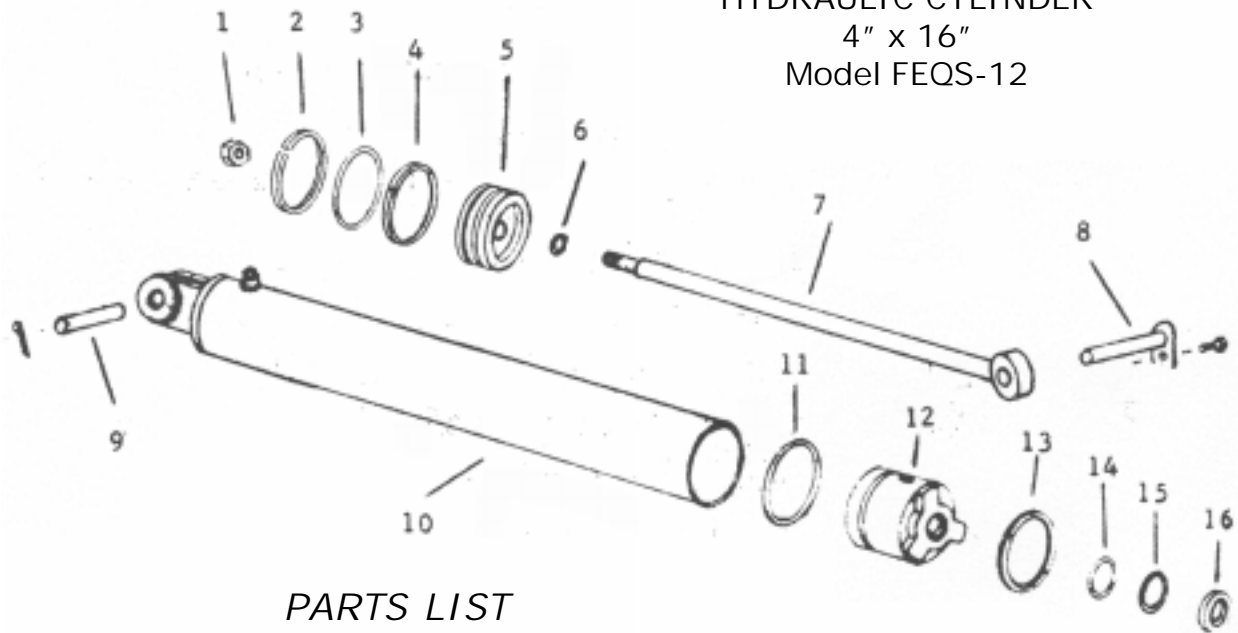
BUCKET, APRON & CUTTING EDGES



PARTS LIST
 BUCKET, APRON & CUTTING EDGES
 B-300 SCRAPER

Key No.	Part No.	Description
1	30016	Shoulder pin, 1-1/4" to 1" NF, ctsk hole in head Nut, 1" NF Lockwasher, 1 Zerk, 1/8" NPT straight
2	30014A 30014	Bucket, (used on sn 2637 and up) Bucket, (used up to sn 2636)
3	B4505	Pin, 1-1/4" x 2-3/8" w/locking head (used on sn 2637 & up) Bolt, 1/2" x 1" NC w/nut and LW
	405	Pin, 1-1/4" x 3", (used up to sn 2636) Narrow rim washer, 1-1/4" ID Cotter pin, 1/4" x 2"
4	B4504	Bushing, 1-1/2" OD x 1" ID x 1-3/32" long (used on sn 2737 & up)
5		Bolt, HT 1" x 3-1/3" NF, w/nut & LW (used on sn 2637 & up)
	405	Pin, 1-1/4" x 3", (used up to sn 2636) Narrow rim washer, 1-1/4" ID Cotter pin, 1/4" x 2"
6	205R	Right cutting edge, 4"
7	3105037	Center cutting edge, 6"
8	206L	Left cutting edge, 4"
9	30017R	Right cutting edge, 6" (optional)
10		Bolt, 1/2" x 1-1/2" w/nuts Bolt, 1/2" x 1-3/4" w/nuts
11	30018LW	Left cutting edge, 6" (optional)
12	30015	Apron

HYDRAULIC CYLINDER
4" x 16"
Model FEQS-12

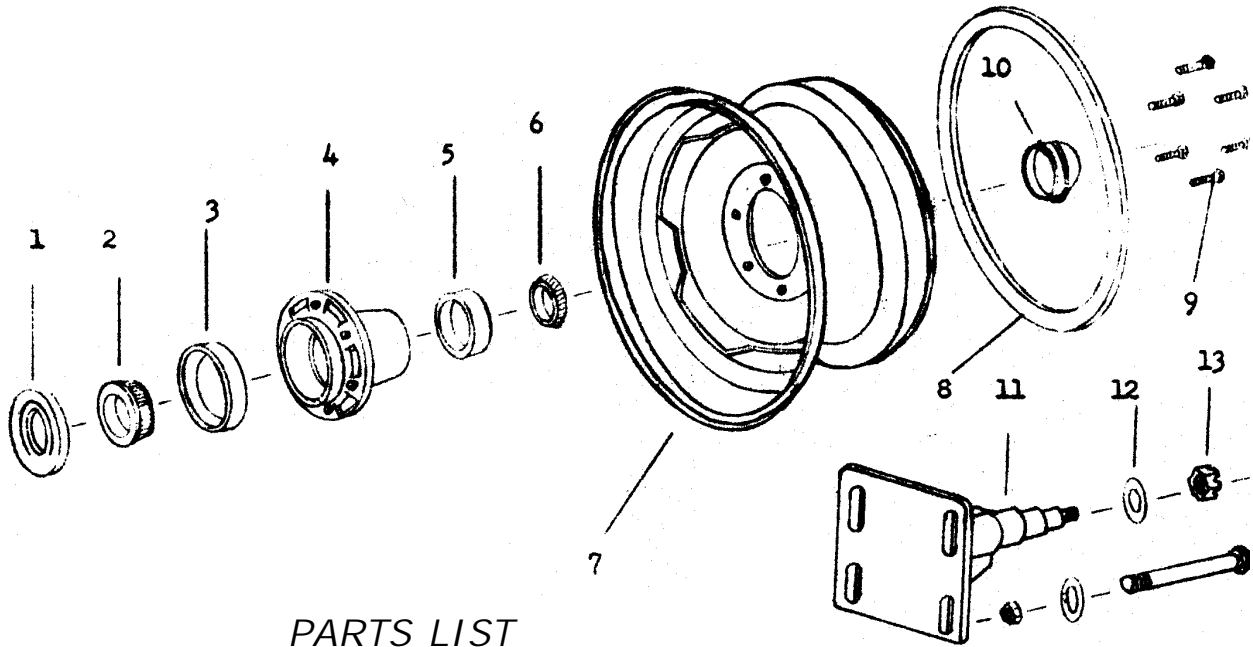


PARTS LIST

Model FEQS-12 Hydraulic Cylinder, 4" x 16"
Model B-300 Scraper (Used up to serial no. 2205)

Key No.	Part No.	Description
1	IHN	Nut, 1" NF hex
2	PMAP-R-45	Piston ring, 4" OD
3	PMAP-O-45	O-ring, 4" OD
4	PAMP-W-45	Back up washer, 4" OD
5	P4-1130	Piston
6	PMAP-O-19	O-ring, 1" OD
7	P13-FEQS-12	Piston rod
8	3006	Front cyl pin 1" x 6-1/4", used 1/4" x 2-1/2" CP (used up to sn 2028)
	3006A	Front cyl pin 1" x 6", (used on sn 2076 & up)
		Capscrew, 1/2" x 1" NC
		Lockwasher, 1/2"
9	3310	Rear cyl pin, 1" x 4" Cotter pin, 3/16" x 1-1/2"
10	BT1-FEQS-12	Butt and cyl tube ass'y
11	PMAP-OG-18	O-ring gasket 4" OD
12	G1-1570	Gland
13	4-SSR	Spiral retaining ring 4"
14	PMAP-O-30	O-ring, 1-3/4" OD
15	PMAP-W-30	Back up washer, 1-3/4" OD
16	PMAP-TBR-30	Wiper seal, 1-3/4" OD
	PMCK-FEQS-12	Packing kit containing:
		1 R-45
		1 O-45
		1 OG-18
		1 W-45
		1 O-30
		1 W-30
		1 TBR-30
		1 4"-SSR
		1 O-19

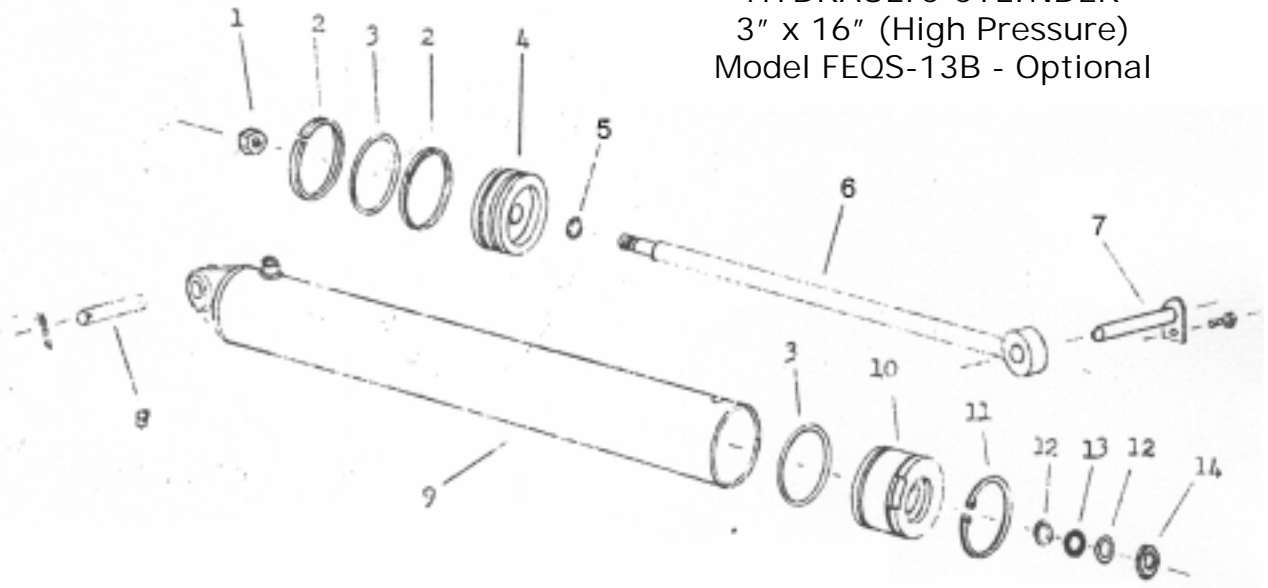
WHEEL, HUB, BEARING & SPINDLE ASS'Y



PARTS LIST

Key No.	Part No.	Description
1	AFS-1180	Grease seal
2	342A	Bearing cone, inner
3	332	Bearing cup, inner
4	Q-670	Hub, less bearings
5	14276	Bearing cup, outer
6	14137A	Bearing cone, outer
7	C-14008	Wheel, less lock ring
	C-13971	Wheel & lock ring ass'y (15" x 6")
8	C-14009	Lock ring
9	FS-13945	Wheel bolt
10	FS-8037	Hub cap
11	30019	Spindle (adjustable type) 3/4" x 5-1/2" spindle bolt (rear spindle) w/nut & washer
12	FS-2002	Washer, 7/8 flat
13		Nut, 7/8 NF castellated

HYDRAULIC CYLINDER
 3" x 16" (High Pressure)
 Model FEQS-13B - Optional

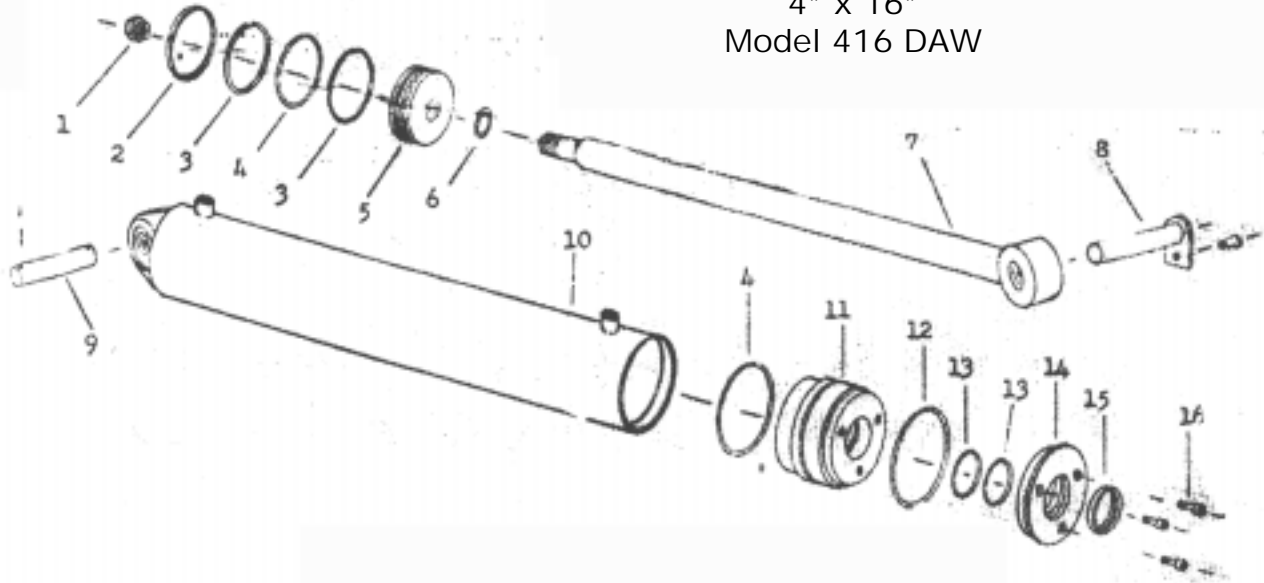


PARTS LIST

Model FEQS-13B Hydraulic Cylinder, 3" x 16"
 Model B-300 Scraper (Used up to serial no. 2636)

Key No.	Part No.	Description
1	1-HN	Nut, 1" NF
2	PMAP-R-37	Piston ring, 3" OD
3	PMAP-O-37	O-ring, 3" OD
4	P4-1900	Piston
5	PMAP-O-15	O-ring, 1" OD
6	P13-FEQS-3B	Piston rod
7	3006A	Rod end cyl pin, 1" x 6"
		Capscrew, 1/2" x 1-1/4"
		Star washer, 1/2"
8	3310	Rear cyl pin, 1" x 4"
		Cotter pin, 3/16" x 1-1/2"
9	BT1-FEQS-13B	Butt and cyl tube ass'y
10	G1-2260	Gland
11	3-TSR	Retaining ring
12	PMAP-W-25	Back up washer, 1-3/8" OD
13	PAMP-O-25	O-ring, 1-3/8" OD
14	PMAP-TBR-25	Wiper seal, 1-3/8" OD
	PMCK-FEQS-13B	Packing kit containing:
		2-R-37
		2-O-37
		1-O-15
		2-W-25
		1-O-25
		1-TBR-25
		1-3-TSR

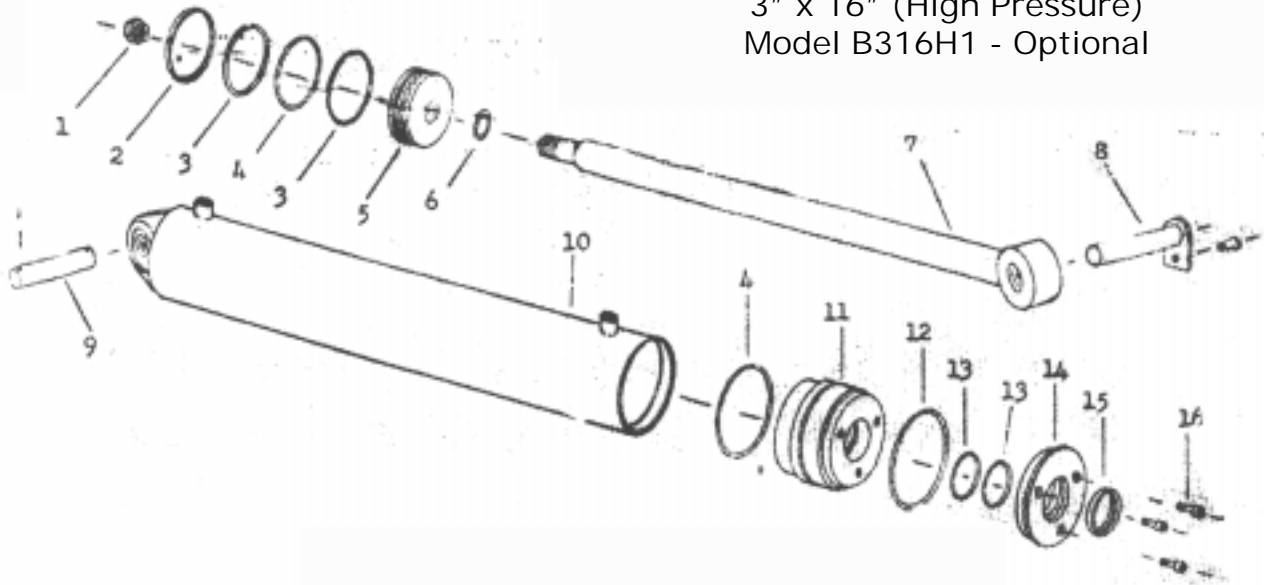
HYDRAULIC CYLINDER
4" x 16"
Model 416 DAW



PARTS LIST

Key No.	Part No.	Description
1	4DAW-T	Piston nut
2	4DAW-PC	Cast iron piston ring
3	4DAW-PB	Piston backup washer
4	4DAW-P	Piston & static O-ring seal
5	4DAW-H	Piston
6	4DAW-S	Piston gasket
7	4DAW-F	Shaft
8	3006A	Pin, 1 x 6"
		Capscrew, 1/2" x 1-1/4" NC
		Shakeproof washer, 1/2"
9	3310	Pin, 1" x 4"
		Cotter pin, 3/16" x 1-1/2"
10	4DAW-GJ	Barrell assembly
11	4DAW-E	Head
12	4DAW-W1	Retainer Ring
13	4DAW-O	Shaft O-ring seal
14	4DAW-W	Head cap
15	4DAW-N	Wiper seal
16	4DAW-X	Socket head cap screw
	4DAW-PK	Packing kit containing:
		1 4DAW-PC
		2 4DAW-PB
		2 4DAW-P
		1 4DAW-S
		1 4DAW-W1
		2 4DAW-O
		1 4DAW-N

HYDRAULIC CYLINDER
3" x 16" (High Pressure)
Model B316H1 - Optional



PARTS LIST

Optional High Pressure Hydraulic Cylinder, Model B316H1, 3" x 16"
Model B-300 Scraper (Used on serial no. 2637 and up)

Key No.	Part No.	Description
1	B22H05	Piston nut, 3/4 NF
2	B11H01	Cast iron piston ring, 3 OD
3	B11H02	Piston backup washer, 3 OD
4	B11H03	Piston & static O-ring seal, 3 OD
5	B11H04	Piston, 3 OD
6	B22H10	Piston gasket, 3/4 ID
7	B22H11	Shaft, 1-1/2"
8	3316A	Front cylinder pin, 1" x 5-5/8"
		Capscrew, 1/2" x 1 NC
		Lockwasher, 1/2"
9	3310	Pin, 1" x 4"
		Cotter pin, 3/16" x 1-1/2"
10	B11H05	Barrell assembly
11	B11H06	Head gland
12	B11H07	Retainer ring
13	B22H15	Shaft O-ring seal, 1-1/2" ID
14	B11H08	Head cap
15	B22H17	Wiper seal, 1-1/2" ID
16	B22H18	Socket head capscrew, 1/4" x 1"
	B11H09	Packing kit containing:
		1 B11H01
		2 B11H02
		2 B11H03
		1 B22H10
		1 B11H07
		2 B22H15
		1 B22H17